



# Lezyne CNC Dirt Floor Drive Hose Replacement

Replace the Drive Hose on your floor pump.

Written By: iRobot



## INTRODUCTION

Over time, the hose on your steel floor drive pump may wear or puncture. Use this guide to install a new hose.



### TOOLS:

- [Flathead Screwdriver](#) (1)
- [Large Needle Nose Pliers](#) (1)



### PARTS:

- [CNC Dirt Floor Drive Pump Replacement Hose](#) (1)


## Step 1 — Drive Hose



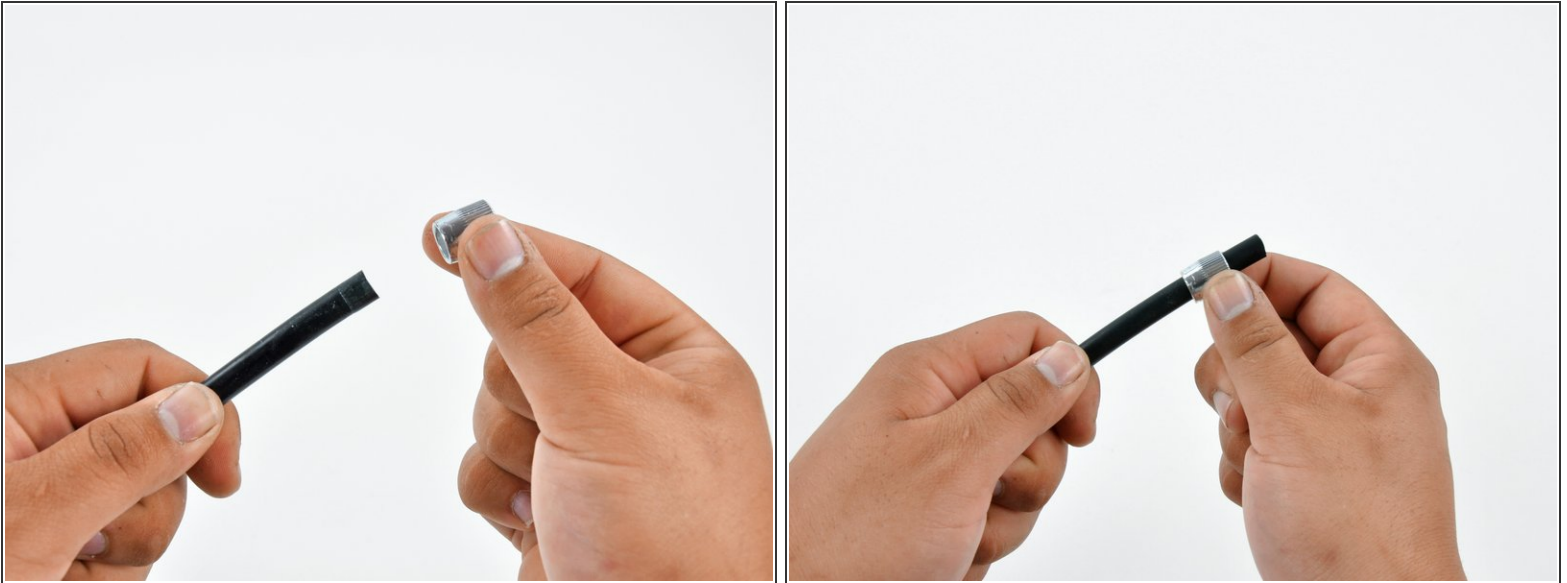
- Use a pair of pliers to loosen the hose pinch by turning it counter-clockwise a couple of turns.
- Continue to loosen the hose pinch by hand until it comes free from its threads.
- Slide the hose pinch up the tube so that it does not interfere with removing the hose.

## Step 2



- Carefully slice a slit in the base of the hose with a hobby knife.  
 Be careful and go slowly so as not to damage the nipple underneath.
- Use a metal prying tool or flathead screwdriver to pry the hose off of the nipple.
- Remove the hose from the pump.

### Step 3



- Slide the hose pinch off of the end of the old hose and onto the new hose.
- ⓘ Be sure that the threaded end of the hose pinch faces toward the open end of the new hose.

### Step 4



- ⓘ Before you slide the new hose on, it may help to dip the end of the new hose in soapy water to make installation easier. Just be sure that there is no water in the hose when you re-install it.
- Press the new hose onto the nipple until the hose touches the base of the pump.
- Push down on the hose clamp while twisting it clockwise to thread it in place.