



LifePrint 2x3 Battery Replacement

This guide will show how to replace the battery in the LifePrint 2x3.

Written By: Alex Ephraim



INTRODUCTION

Is your LifePrint 2x3 not holding a charge? The issue at hand may be that the battery is faulty and not working. If your device is failing to hold a charge, the battery may need to be replaced. Consider using this guide to replace the faulty battery in your device.



TOOLS:

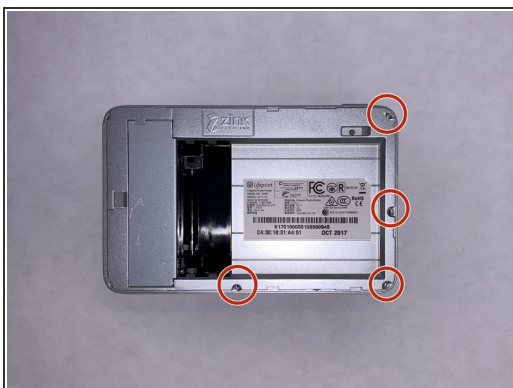
- [iFixit Opening Tools](#) (1)
 - [Spudger](#) (1)
 - [Tweezers - Pro/ESD/Angled](#) (1)
 - [Phillips #00 Screwdriver](#) (1)
-

Step 1 — Battery



- Orient the LifePrint 2x3 so that the top of the device is facing upwards. Slide the top cover toward the far side of the device and remove it.

Step 2



- Remove the six 5.24 mm screws located around the edges of the device using a Phillips #00 Screwdriver.

Step 3



- Flip the LifePrint 2x3 upside down. Using a plastic opening pick, separate the bottom cover from the device and remove it.

Step 4



- Using the angled tweezers grip the sides of the connector and slowly rock it side to side to remove. If the connector is not disconnecting, try using the spudger but be careful not to damage the motherboard.
- Once disconnected, remove the old battery.

To reassemble your device, follow these instructions in reverse order.