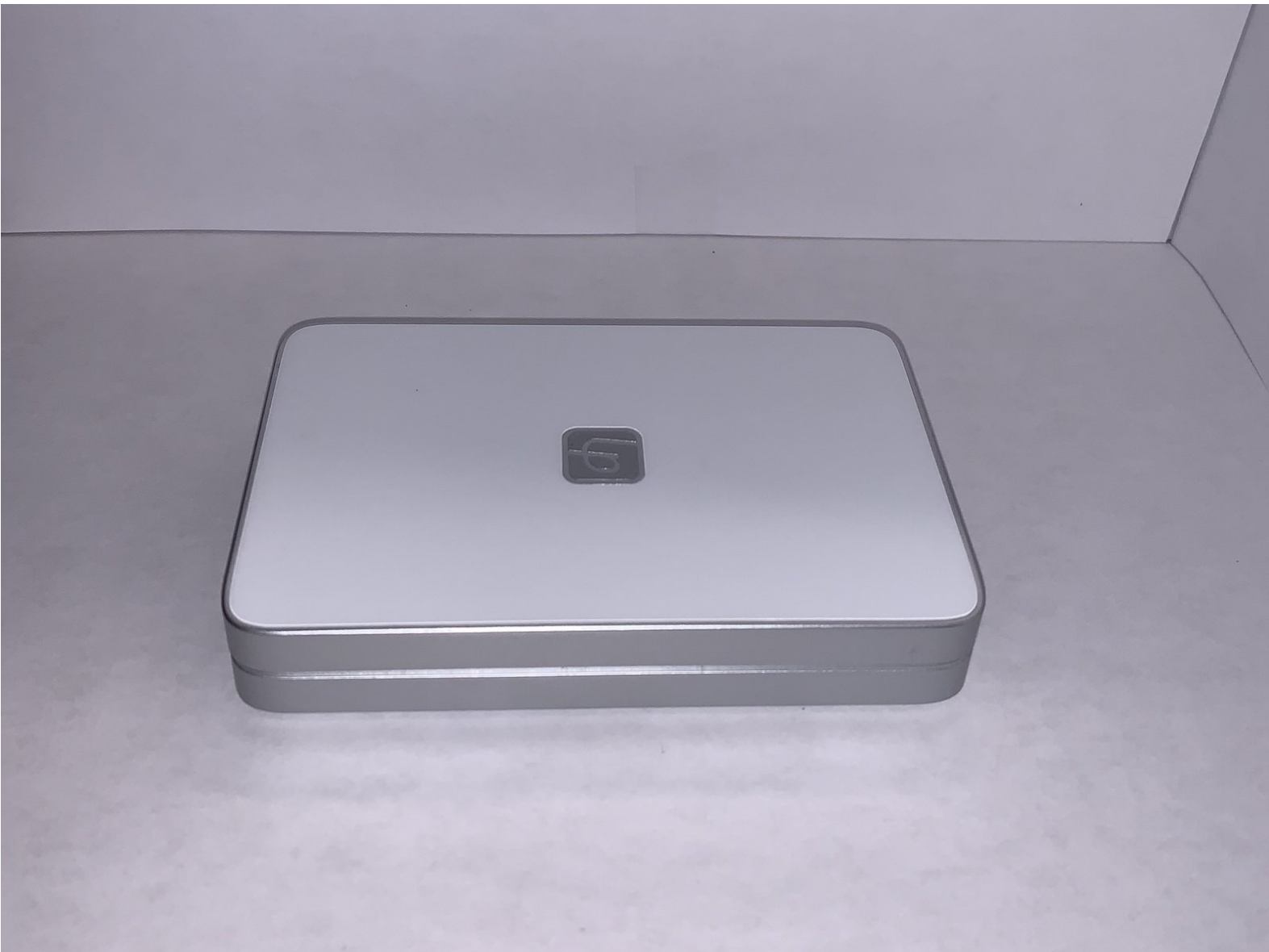




LifePrint 2x3 Motor-Feeder Replacement

Use this guide to replace the motor/paper feeder in your LifePrint 2x3.

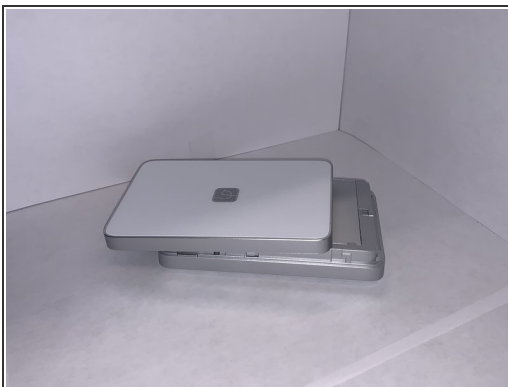
Written By: Calli Brown



INTRODUCTION

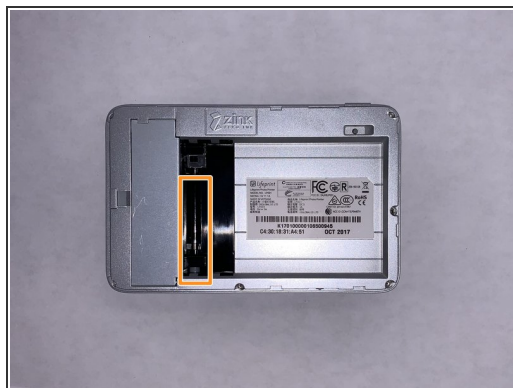
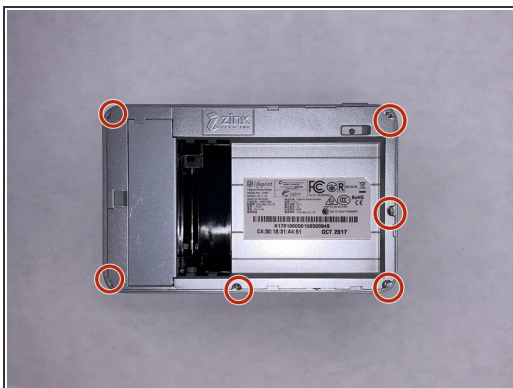
Overtime, the paper feeder and motor will become likely to wear out. You may notice a paper jam in your printer if the motor isn't working properly. If the paper is not feeding properly through your LifePrint 2x3, the motor could be wearing out. Use this guide to replace the motor/paper feeder in your device.

Step 1 — Motor-Feeder



- Make sure the top of the Lifeprint is facing upwards displaying the Lifeprint logo.
- Slide open the top cover and remove the top lid.

Step 2



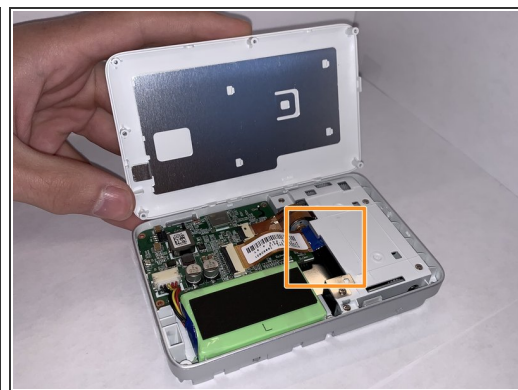
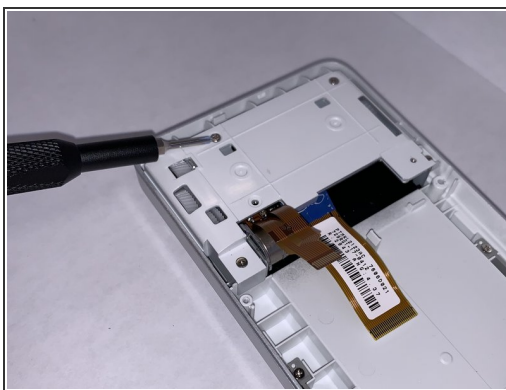
- Remove the six screws on the outer sides of the device with the Phillips #00 screwdriver.
- The motor is highlighted in orange.

Step 3



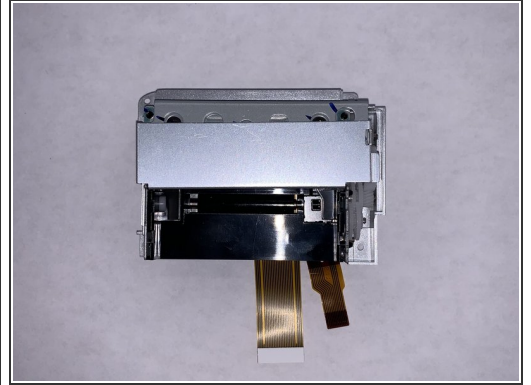
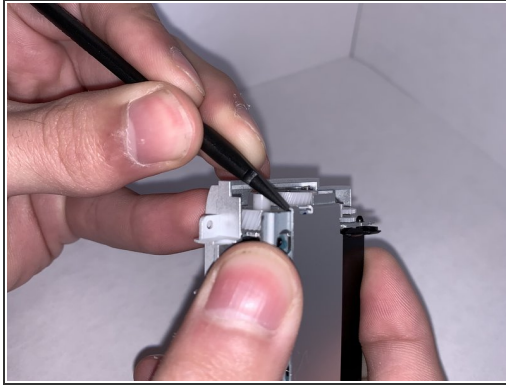
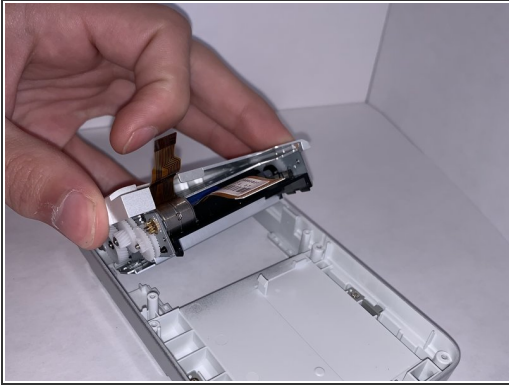
- After removing the six screws, gently flip the device over so the bottom cover is facing you.
- Remove the bottom cover by using the opening pick.

Step 4



- Remove the four screws using the Phillips #00 screwdriver to access the motor and sensor (highlighted in orange).

Step 5



- Remove the component holding the motor and feeder.
- Using a spudger remove the top piece of the component to get to the motor and feeder.
- Remove the motor and feeder assembly from the device.

To reassemble your device, follow these instructions in reverse order.