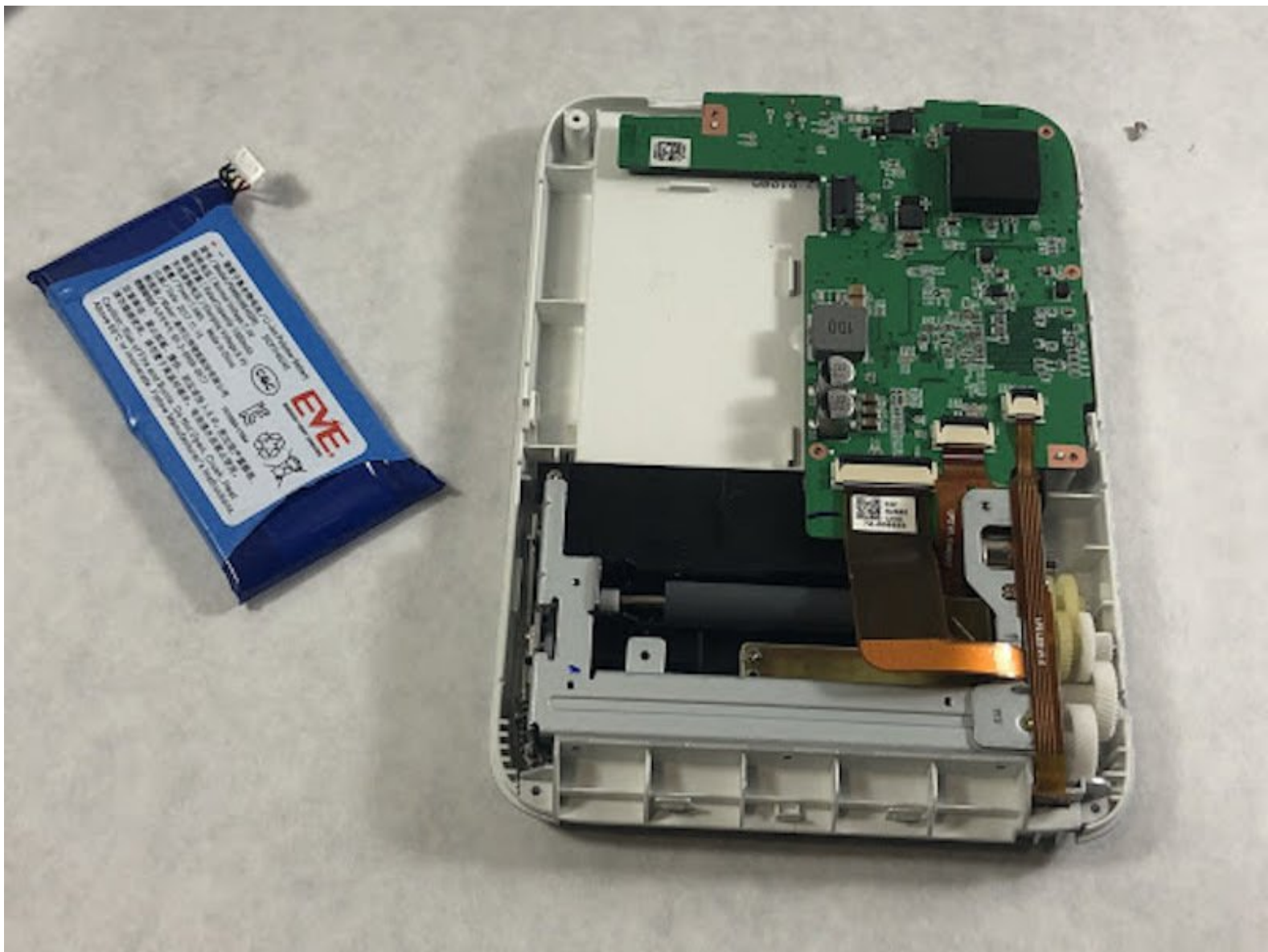




LifePrint 3x4.5 Battery Replacement

This guide shows you how to remove and replace the 1000 mAh Lithium Ion Battery in your Lifeprint 3 x 4.5

Written By: Jacqueline Broderick



INTRODUCTION

The Lifeprint 3 x 4.5 uses a rechargeable Lithium ion battery. In the case that the Lifeprint won't charge, replacing the rechargeable battery is a potential solution to allow your Lifeprint to turn on.



TOOLS:

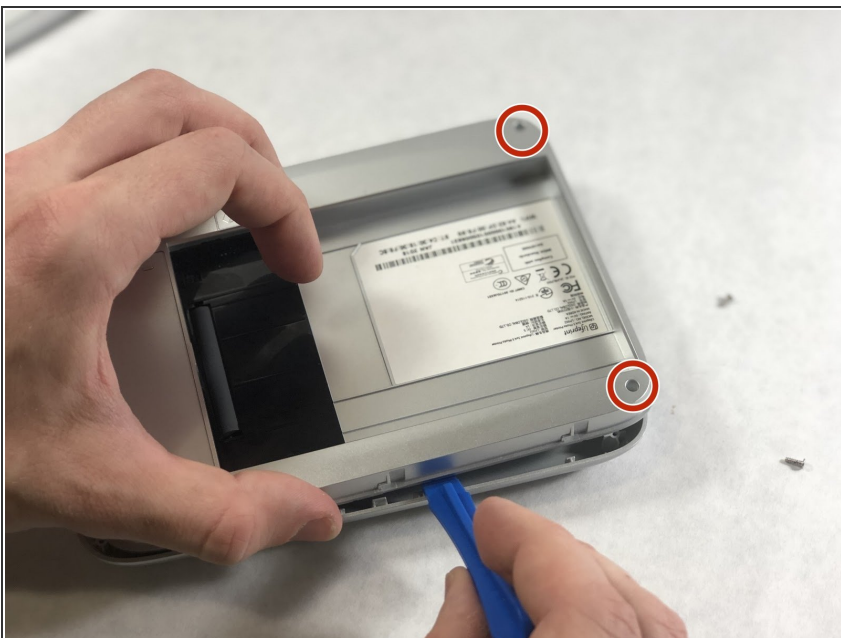
- [iFixit Opening Tools](#) (1)
 - [Phillips #0 Screwdriver](#) (1)
-

Step 1 — Top Cover



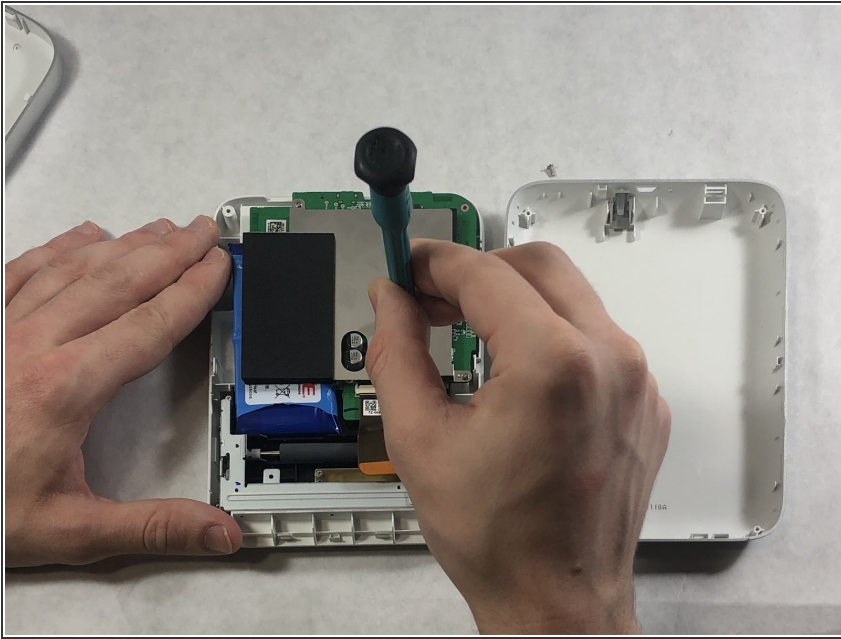
- Place one hand on the top cover and one hand on the bottom portion of the LifePrint.
- While having the LP logo on the printer facing away from you, push the top cover away from you until it can't be slid away any further.
- Pull the cover with the LP logo up to separate it from the rest of the printer.

Step 2 — Inner Cover



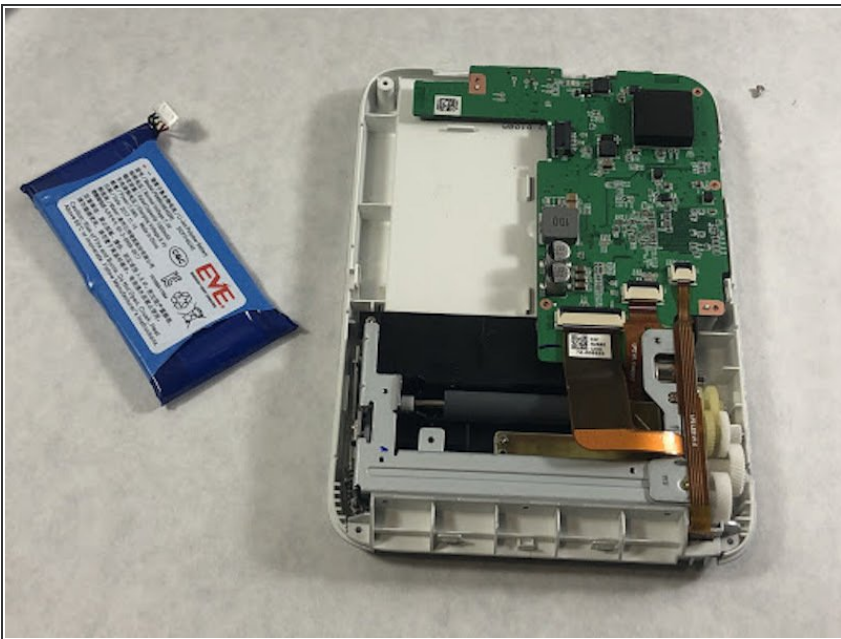
- Using a Phillips #0 screwdriver, remove the four 15 mm screws connecting both sections of the device.
- Use an opening tool to remove the inner cover from the printer.

Step 3 — Battery



- Remove three 4mm Phillips #0 screws connecting the metal shield covering the battery.
- Slide out the white power connector with two red wires, two black wires, and one yellow wire from the terminal connected to the circuit board.
- Apply pressure gently and slowly from underneath the battery from the plastic.

Step 4



- Remove the battery from the printer.

To reassemble your device, follow these instructions in reverse order.