



LifePrint 3x4.5 Charging Port Replacement

How to replace a LifePrint 3x4.5 charging port.

Written By: Jacqueline Broderick



INTRODUCTION

The charging port is used to charge the LifePrint 3x4.5 and is an essential working component of the printer. The port is a micro usb c port.



TOOLS:

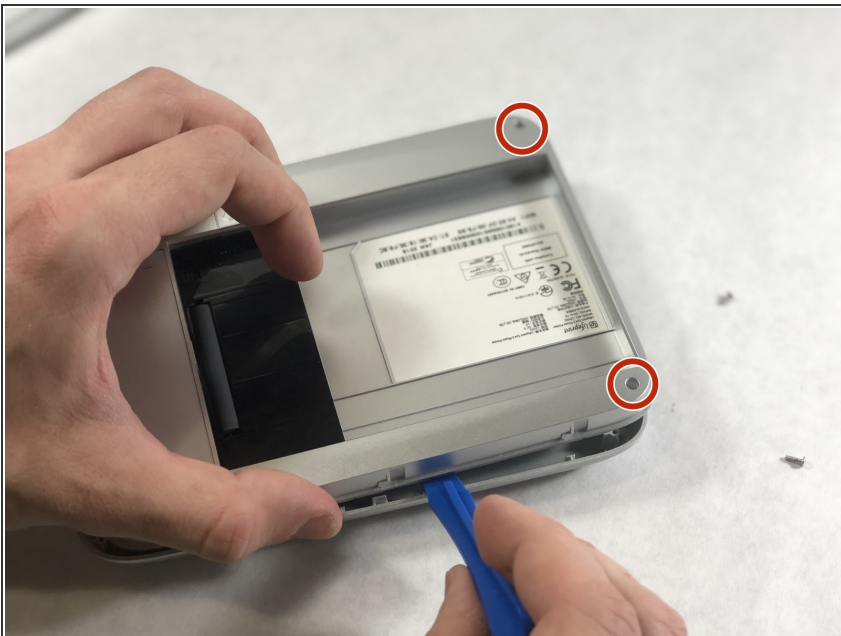
- [Phillips #0 Screwdriver](#) (1)
 - [iFixit Opening Tools](#) (1)
 - [Soldering Iron](#) (1)
 - [Solder](#) (1)
 - [Soldering Tweezers](#) (1)
 - [Desoldering Braid](#) (1)
-

Step 1 — Top Cover



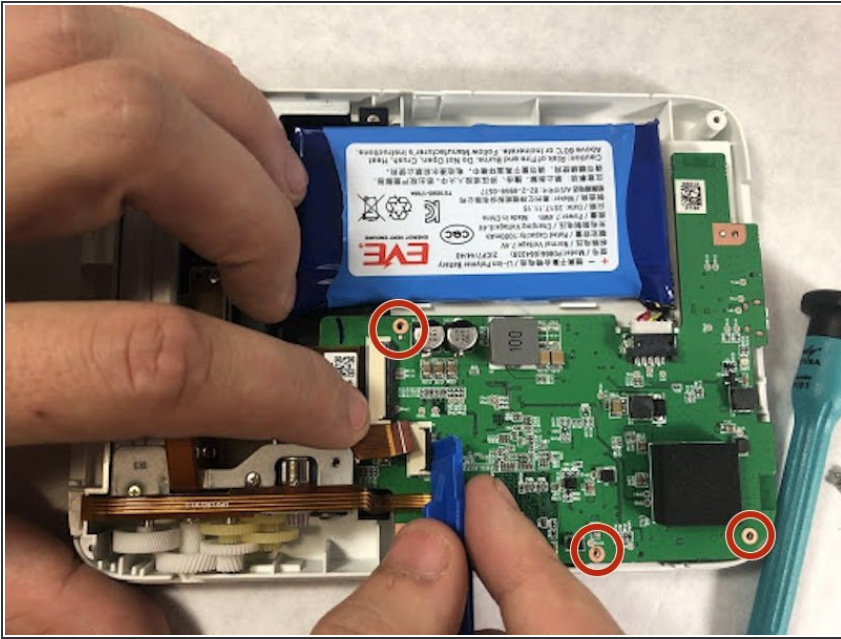
- Place one hand on the top cover and one hand on the bottom portion of the LifePrint.
- While having the LP logo on the printer facing away from you, push the top cover away from you until it can't be slid away any further.
- Pull the cover with the LP logo up to separate it from the rest of the printer.

Step 2 — Inner Cover



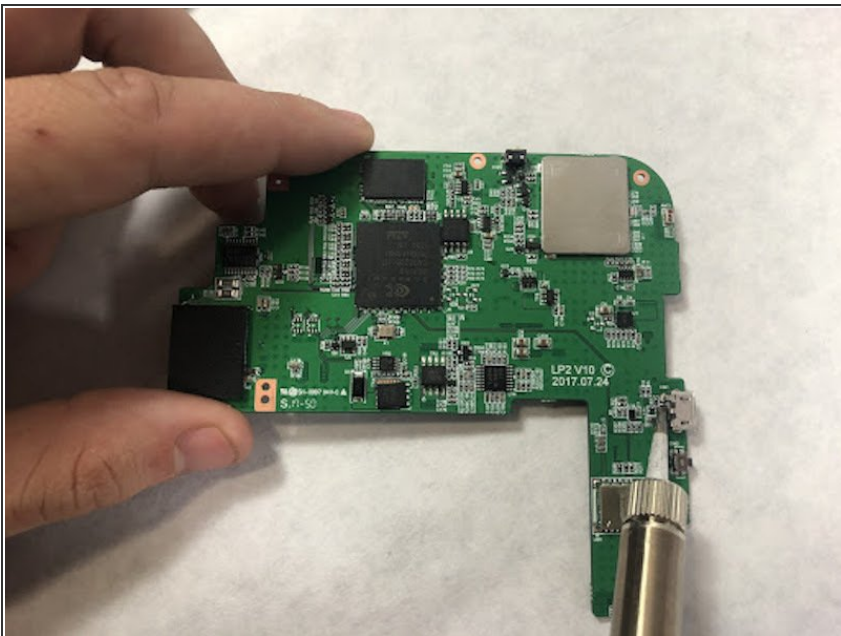
- Using a Phillips #0 screwdriver, remove the four 15 mm screws connecting both sections of the device.
- Use an opening tool to remove the inner cover from the printer.

Step 3 — Charging Port



- Remove the five Phillips #0 screws from the outer edge of the motherboard indicated by the copper color surrounding the screws' housing.

Step 4



- Use a soldering iron to heat up the soldering joints surrounding the port that connects the device to the circuit board.
- After the solder is heated up use the de-soldering wick to absorb the solder holding the socket to the circuit board .
- After the solder is removed use the tweezers to remove the port from the circuit board.

To reassemble your device, follow these instructions in reverse order.