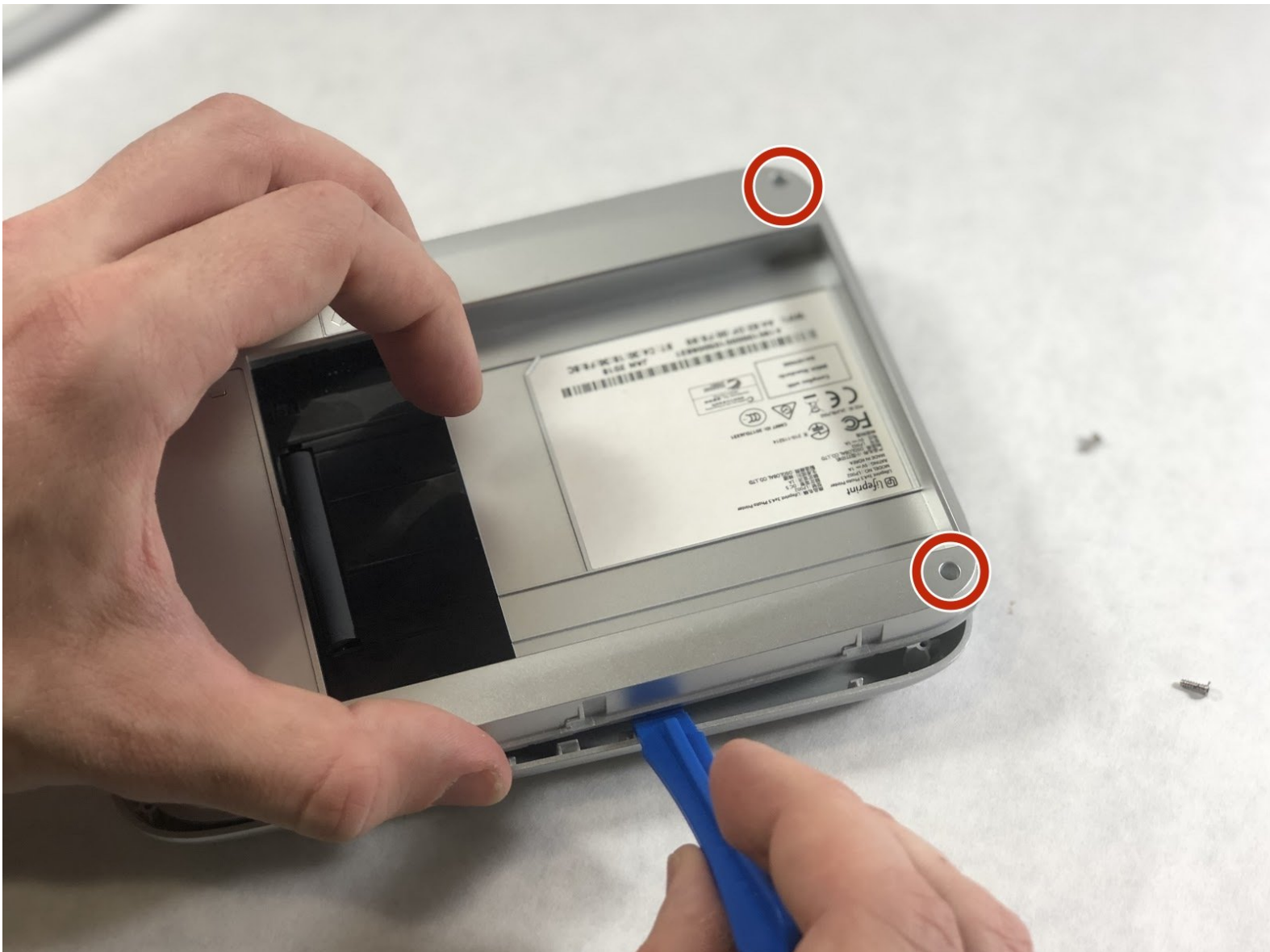




# LifePrint 3x4.5 Inner Cover Replacement

How to replace a LifePrint 3x4.5 inner cover.

Written By: Kristen Gismondi





## TOOLS:

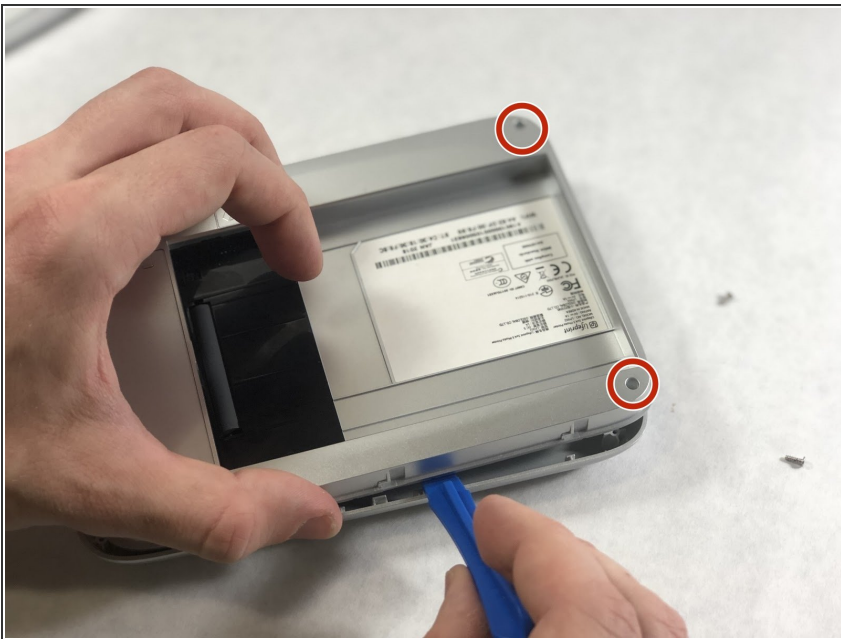
- [Phillips #0 Screwdriver](#) (1)
- [iFixit Opening Tools](#) (1)

## Step 1 — Top Cover



- Place one hand on the top cover and one hand on the bottom portion of the LifePrint.
- While having the LP logo on the printer facing away from you, push the top cover away from you until it can't be slid away any further.
- Pull the cover with the LP logo up to separate it from the rest of the printer.

## Step 2 — Inner Cover



- Using a Phillips #0 screwdriver, remove the four 15 mm screws connecting both sections of the device.
- Use an opening tool to remove the inner cover from the printer.

To reassemble your device, follow these instructions in reverse order.