



# LifeTrak Zone C410 Battery Replacement

This will guide users how to replace the battery of LifeTrak Zone C410.

Written By: Jun Jamil



## INTRODUCTION

This guide will show you the steps to replace the battery of the LifeTrak C410. Replacement battery can be found [here](#).



### TOOLS:

- [Phillips #0 Screwdriver](#) (1)



### PARTS:

- [3 Volts watch battery](#) (1)

## Step 1 — Band 1 removal



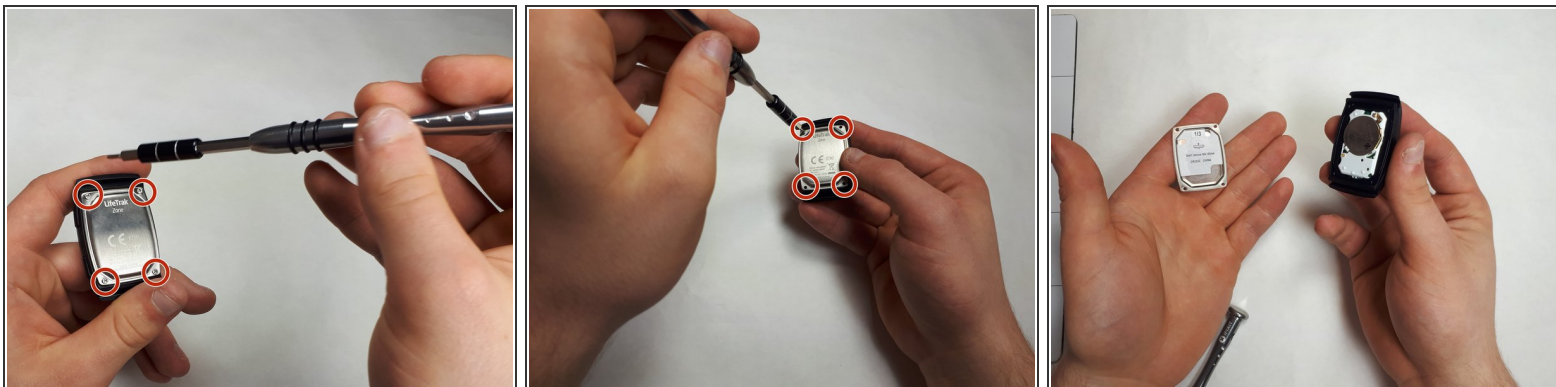
- Grasp the body of the watch between your thumb and your index finger.
- Slide the band through its clasp.

## Step 2 — Band 2 removal



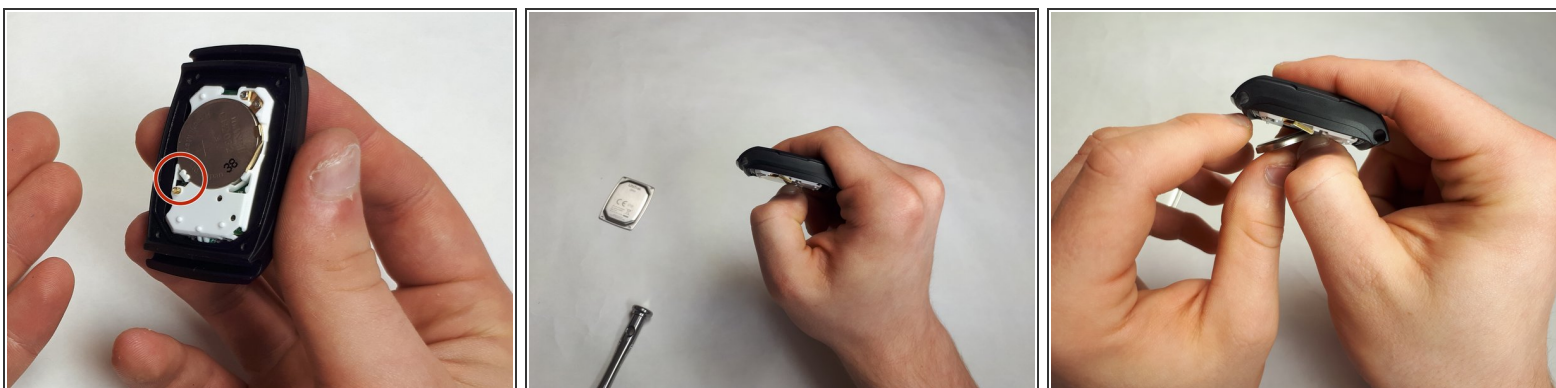
- Repeat step 1 for the next band.

### Step 3 — Remove all the screws



- Remove the four 5.24 mm screws using a Phillips #0 screwdriver.
- Remove the back panel.

### Step 4



- Pull on the white tab to release the battery.
- While holding the watch upside down, pull the battery out.

To reassemble your device, follow these instructions in reverse order.