



# Linksys EA6900 Disassembly

This is how to disassemble the router to get access to the motherboard

Written By: Denis



# INTRODUCTION

For any major replacement, you need to disassemble the router to get full access to the motherboard

---

## TOOLS:

- [Phillips #1 Screwdriver](#) (1)
  - [iFixit Opening Tools](#) (1)
  - [Tweezers](#) (1)
-

## Step 1 — Linksys EA6900 Disassembly



- Remove the antennas by unscrewing them from the base.
- Flip over the device and locate the four rubber feet on the bottom.
- Remove the rubber feet with tweezers

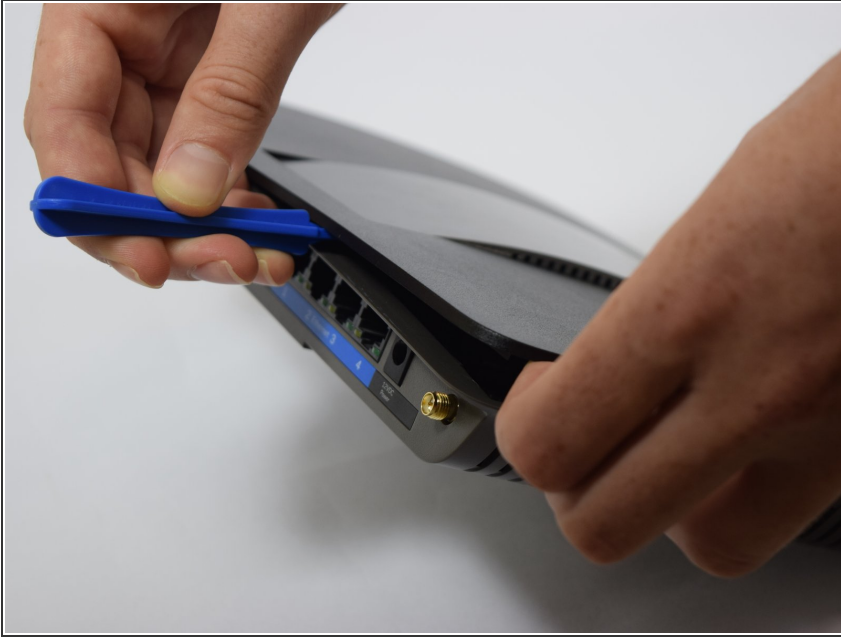
## Step 2



- Remove the 0.4cm head screws from each slot with the #1 Phillips head Screwdriver.



### Step 3



- Use a blue plastic opening tool to remove the top cover.
- Move the blue plastic opening tool gently underneath the top cover from side to side.

### Step 4



- Gently lift the motherboard and remove it from the case
- Put the motherboard over a (preferably white) surface.

To reassemble your device, follow these instructions in reverse order.