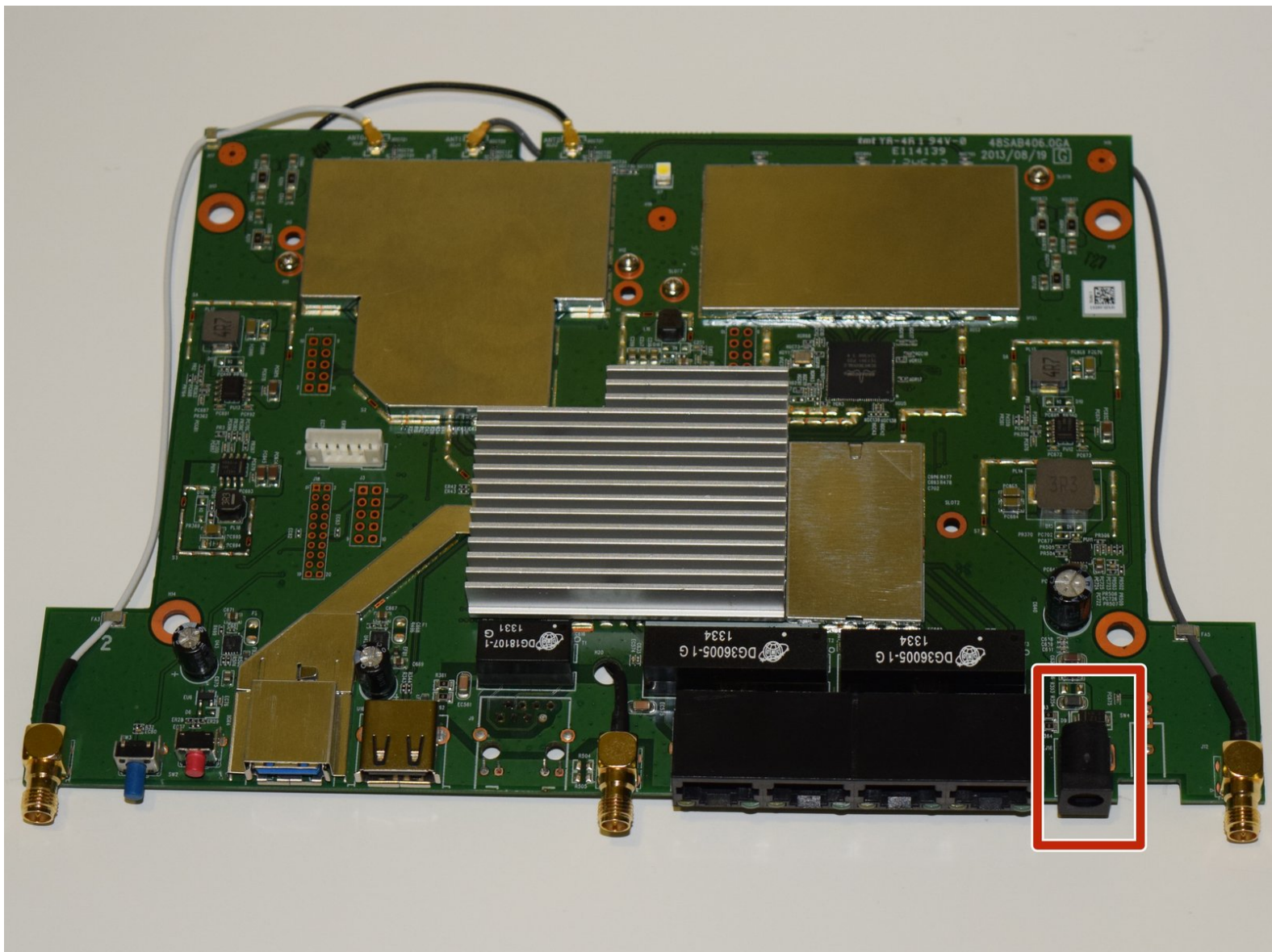




# Linksys EA6900 Power Port Replacement

This guide will teach you how to remove and replace the power port directly on the motherboard.

Written By: Tyler Markiewicz



## INTRODUCTION

Faulty power ports can result in loss of power to your device. This guide will show you how to identify and replace a dysfunctional power port on your router.

Make sure you are in a well ventilated area at room temperature with the proper safety equipment when soldering.

---

### TOOLS:

- [Tweezers](#) (1)
  - [Phillips #1 Screwdriver](#) (1)
  - [iFixit Opening Tools](#) (1)
  - [Solder](#) (1)
  - [Spudger](#) (1)
  - [Soldering Iron](#) (1)
-

## Step 1 — Linksys EA6900 Disassembly



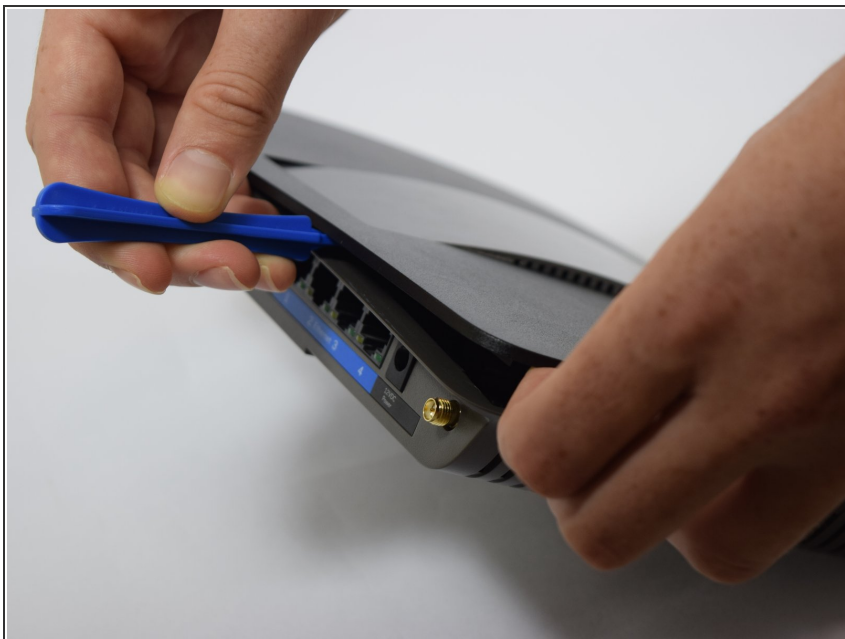
- Remove the antennas by unscrewing them from the base.
- Flip over the device and locate the four rubber feet on the bottom.
- Remove the rubber feet with tweezers

## Step 2



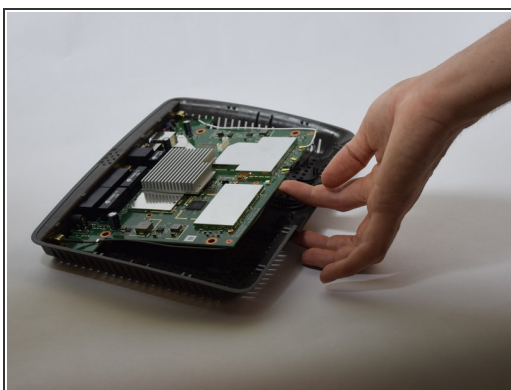
- Remove the 0.4cm head screws from each slot with the #1 Phillips head Screwdriver.

### Step 3



- Use a blue plastic opening tool to remove the top cover.
- Move the blue plastic opening tool gently underneath the top cover from side to side.

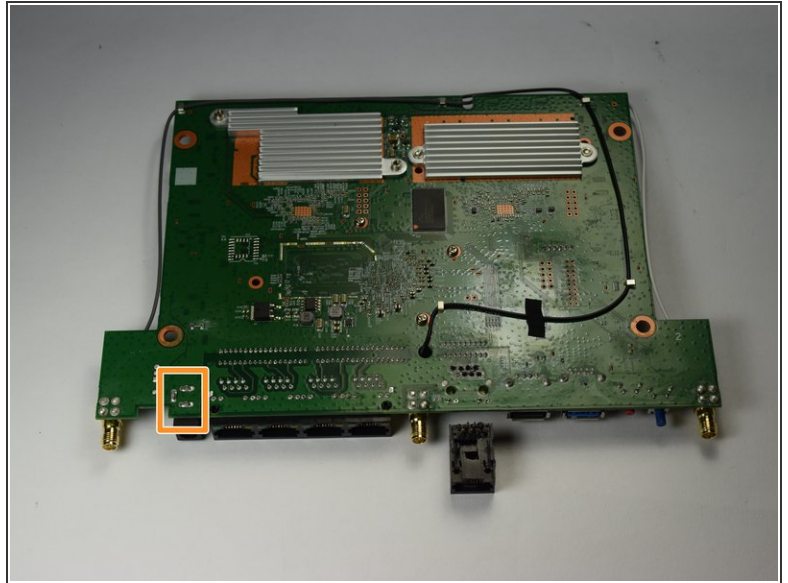
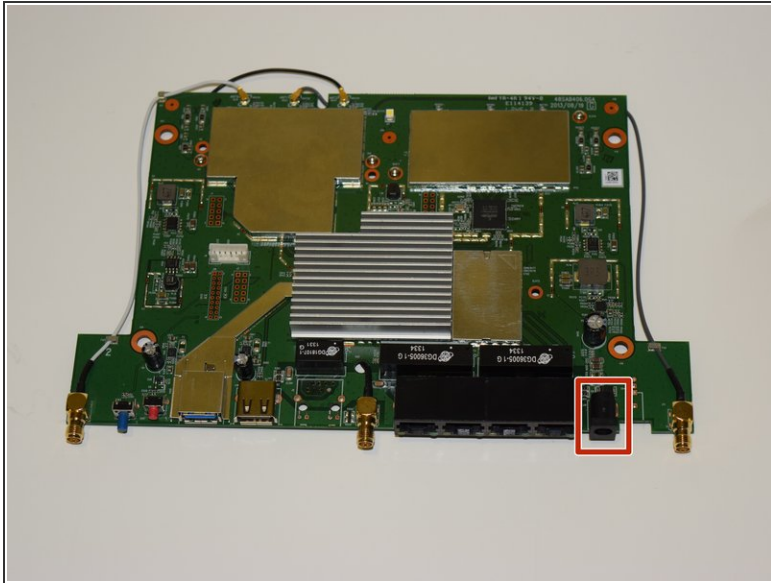
### Step 4



- Gently lift the motherboard and remove it from the case
- Put the motherboard over a (preferably white) surface.

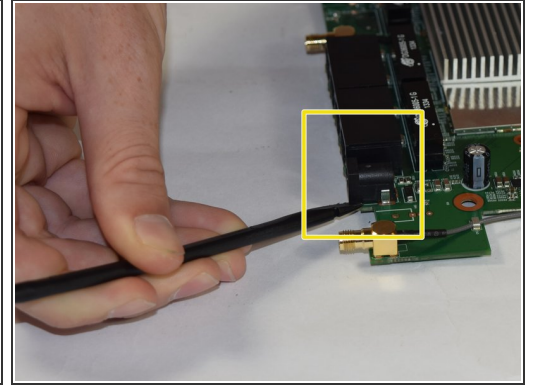
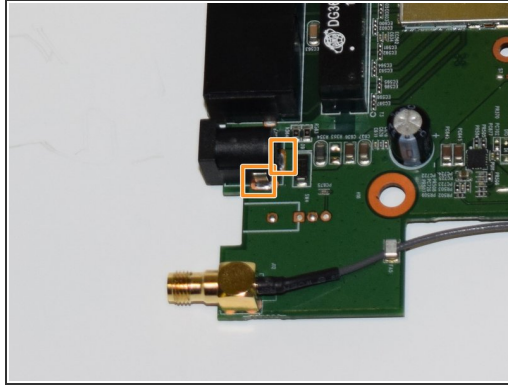
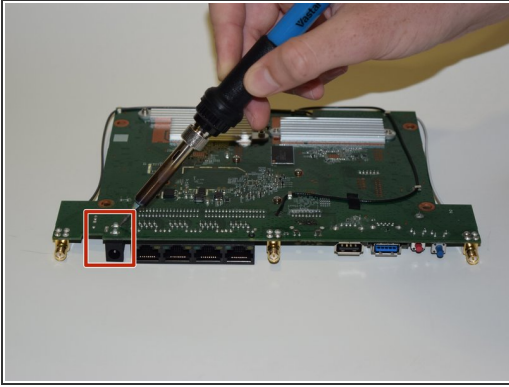


## Step 5 — Power Port



- Locate the power port on both sides of the motherboard.
  - The power port on the top side is in a rectangular black casing.
  - Identify the three prongs where the power port is soldered to on the reverse side.

## Step 6



- Carefully apply the soldering iron on each of the three points on the bottom side of the motherboard to melt them.
- ⚠ Be careful to not touch the motherboard with the soldering iron, you can damage the circuits.
- After you have melted and removed the solder, flip the mother board around and identify the connecting points of the power port.
- Use a black spudger to gently separate the power port from the motherboard

To reassemble your device, follow these instructions in reverse order.