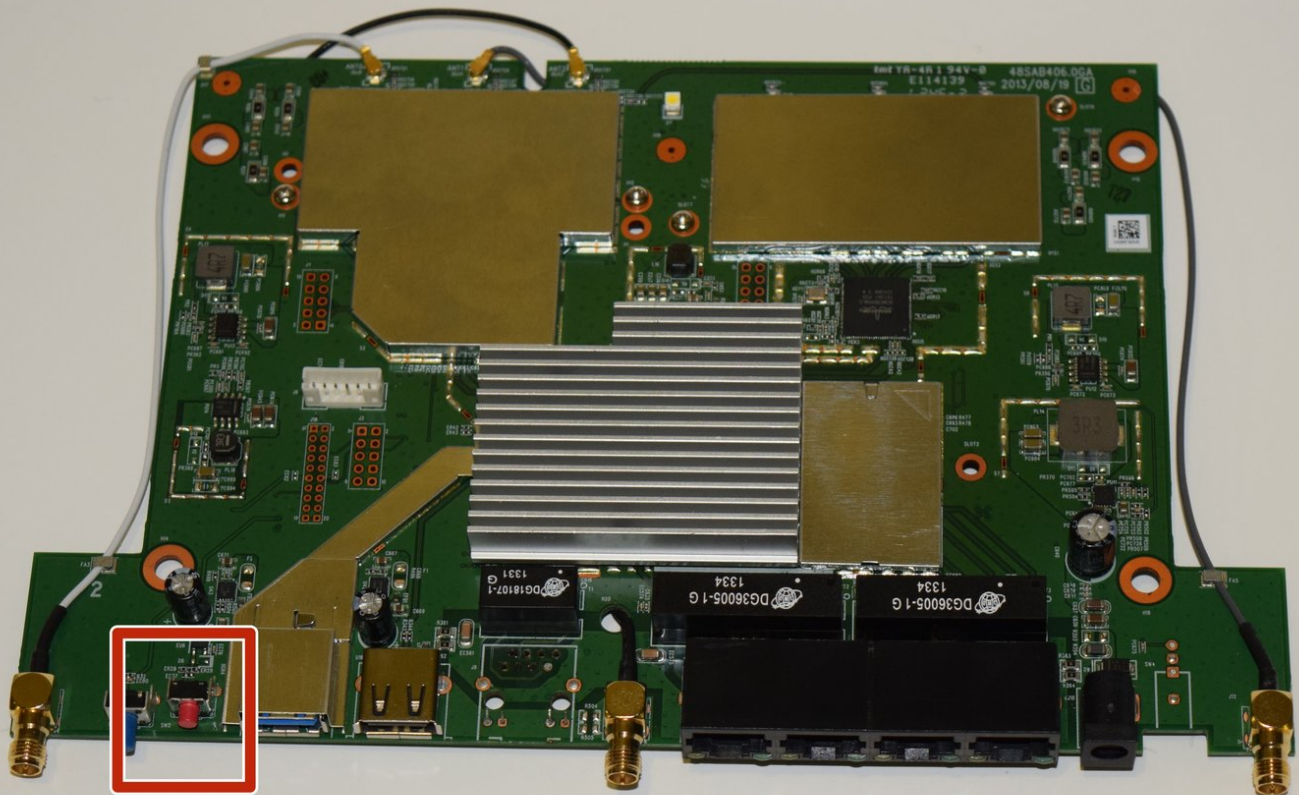




Linksys EA6900 Router Reset Button Replacement

This guide will help replace a faulty reset button for the Linksys EA6900 router.

Written By: Rick Hsu



INTRODUCTION

Without a working reset button, users will not be able to default the router to factory settings. Resetting the router allows users to access the router in case they forget the password to the router administrator settings page or Wi-Fi network.

This guide will show users step by step instructions on accessing the router motherboard to replace the router reset button.



TOOLS:

- [Tweezers](#) (1)
- [Phillips #1 Screwdriver](#) (1)
- [iFixit Opening Tools](#) (1)
- [Solder](#) (1)
- [Spudger](#) (1)
- [Soldering Iron](#) (1)



PARTS:

- [Router Reset Button](#) (1)

Step 1 — Linksys EA6900 Disassembly



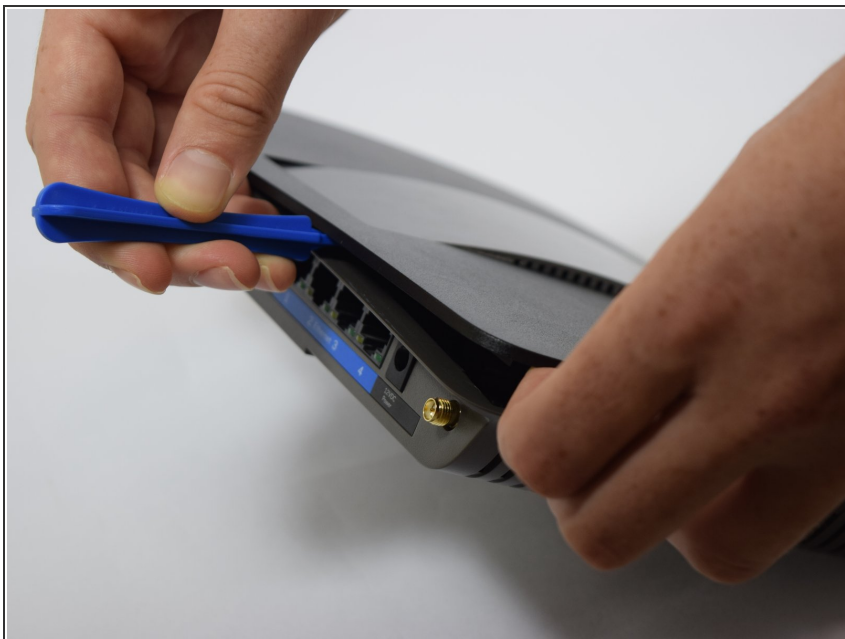
- Remove the antennas by unscrewing them from the base.
- Flip over the device and locate the four rubber feet on the bottom.
- Remove the rubber feet with tweezers

Step 2



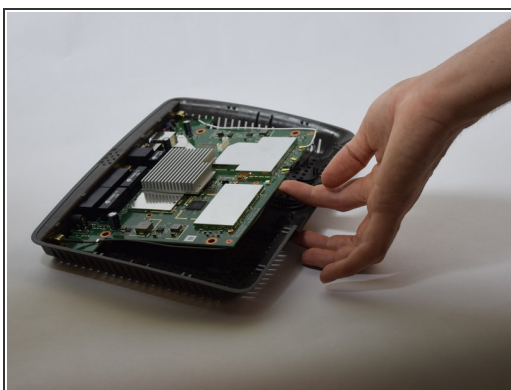
- Remove the 0.4cm head screws from each slot with the #1 Phillips head Screwdriver.

Step 3



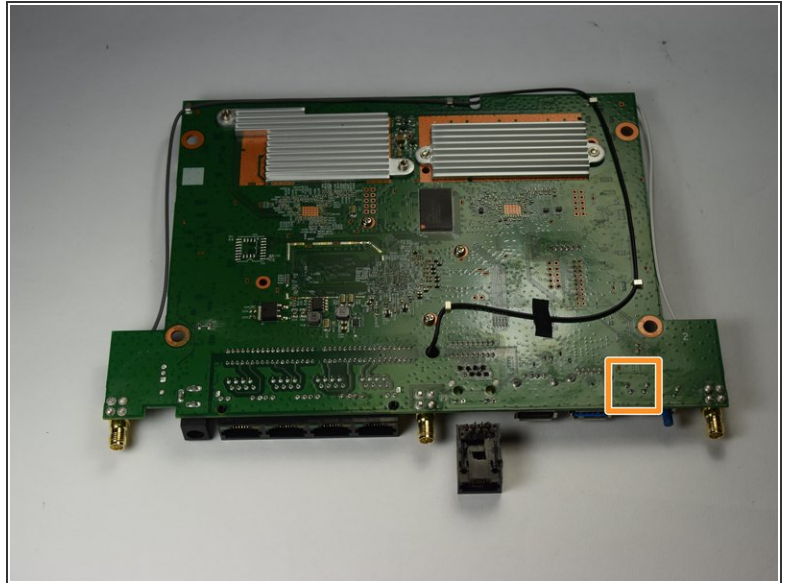
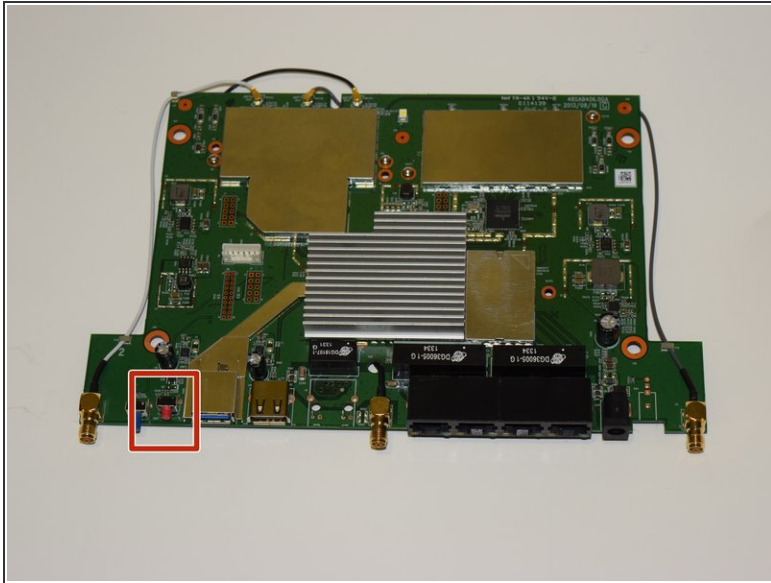
- Use a blue plastic opening tool to remove the top cover.
- Move the blue plastic opening tool gently underneath the top cover from side to side.

Step 4



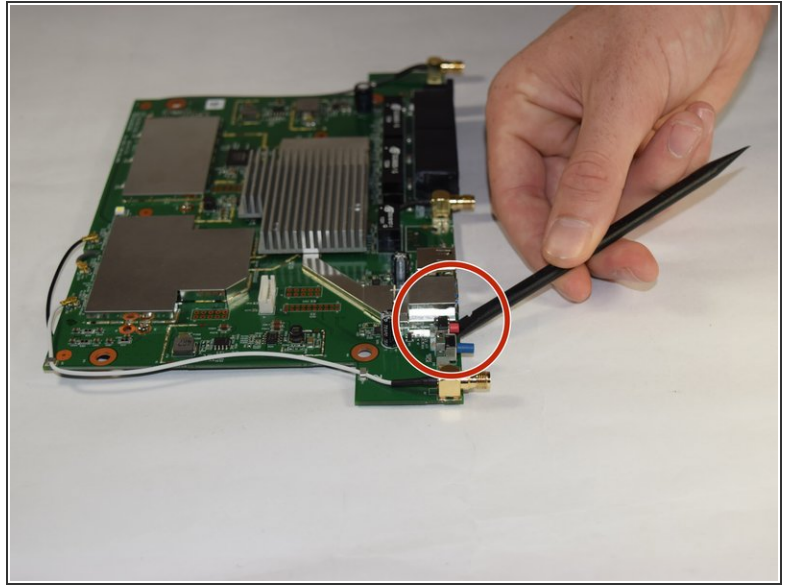
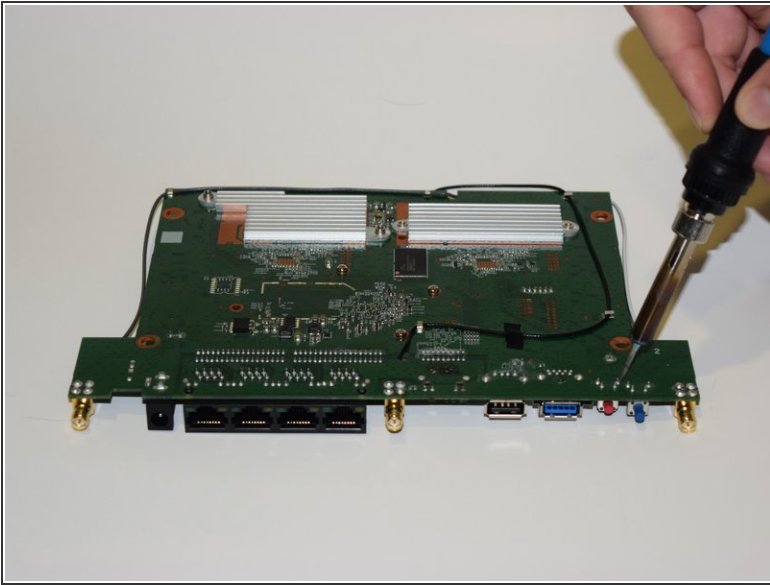
- Gently lift the motherboard and remove it from the case
- Put the motherboard over a (preferably white) surface.

Step 5 — Router Reset Button



- Make sure to correctly identify the red router reset button.
- Locate the four solder points on the other side of the motherboard.

Step 6



- ⚠ Be careful when working with the hot soldering iron! Make sure the router motherboard is safely resting on a level and sturdy surface.
- Carefully apply the soldering iron to the four solders. Avoid touching the motherboard with the soldering iron, this could damage the circuits.
 - Use a spudger to gently pry and remove the reset button once the solder has melted.

To reassemble your device, follow these instructions in reverse order.