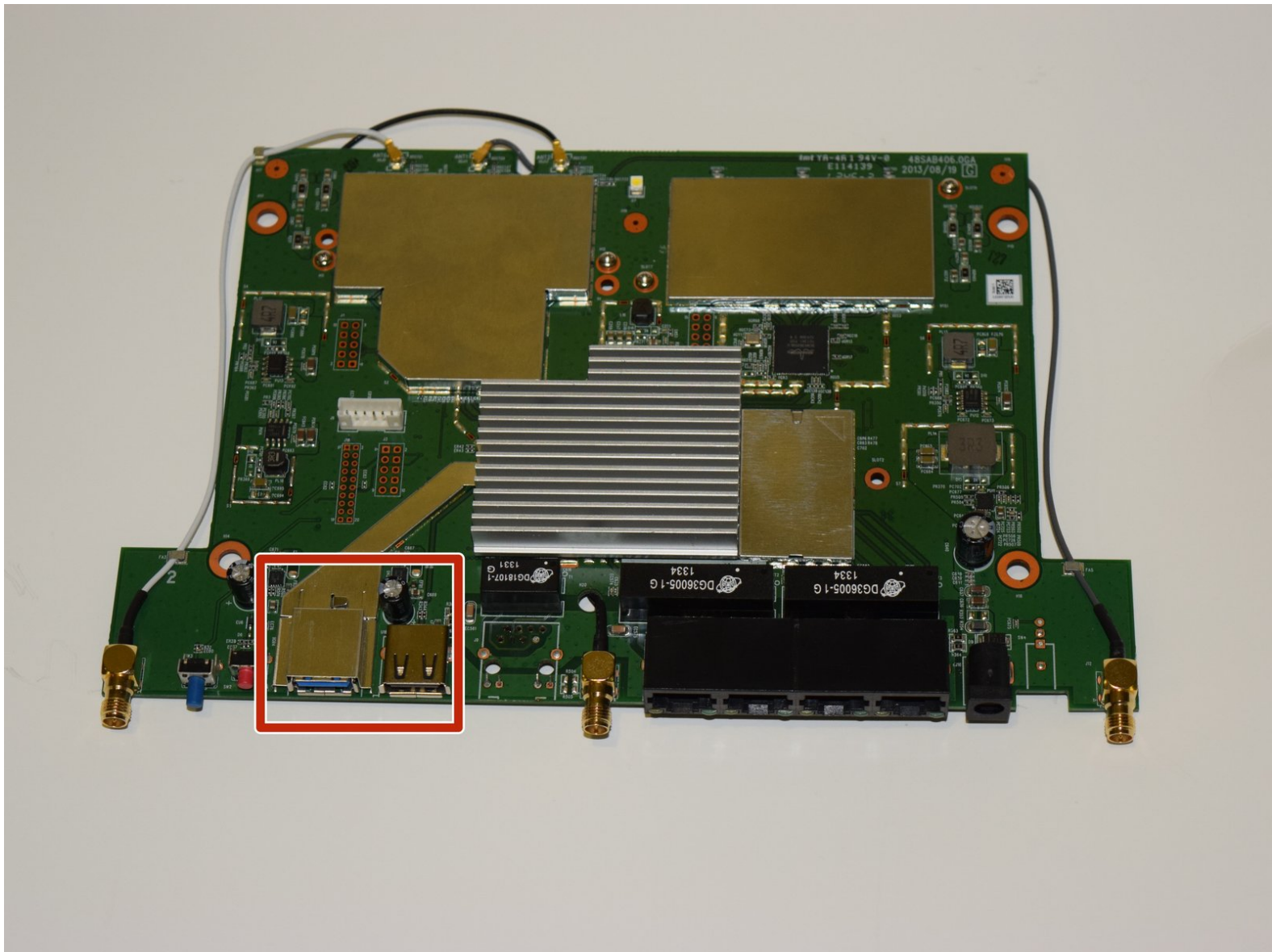




Linksys EA6900 USB Ports Replacement

This guide will show you how to replace the USB ports on the Linksys EA6900 wireless router.

Written By: Matt Tryon



INTRODUCTION

USB ports on the router are used to connect and transmit data from another device. Faulty USB ports can be replaced with the proper equipment. This guide will show you how to remove a soldered USB port for replacement.

TOOLS:

- [Tweezers](#) (1)
 - [Phillips #1 Screwdriver](#) (1)
 - [iFixit Opening Tools](#) (1)
 - [Solder](#) (1)
 - [Spudger](#) (1)
 - [Soldering Iron](#) (1)
-

Step 1 — Linksys EA6900 Disassembly



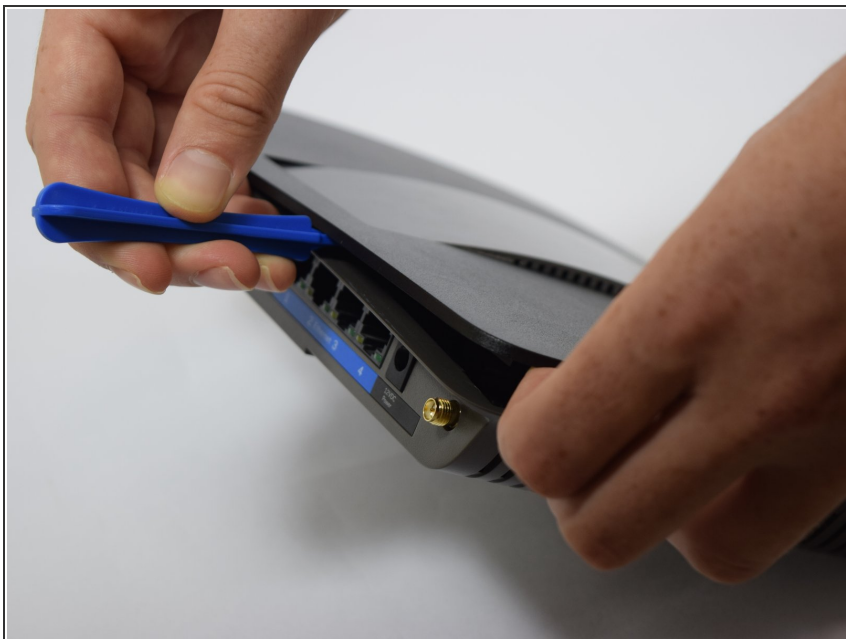
- Remove the antennas by unscrewing them from the base.
- Flip over the device and locate the four rubber feet on the bottom.
- Remove the rubber feet with tweezers

Step 2



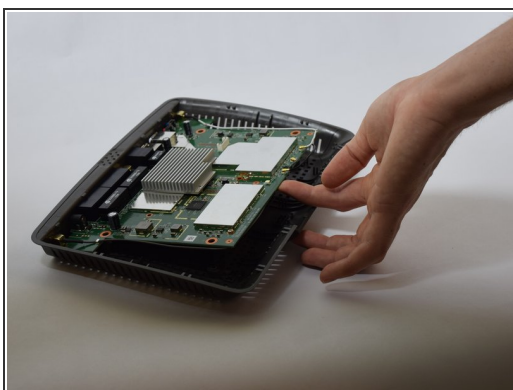
- Remove the 0.4cm head screws from each slot with the #1 Phillips head Screwdriver.

Step 3



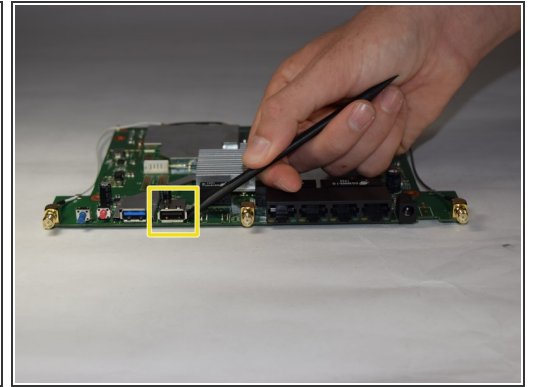
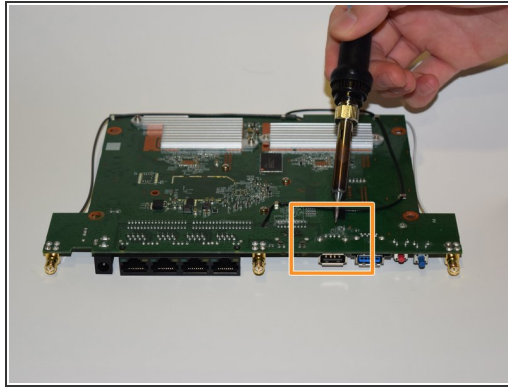
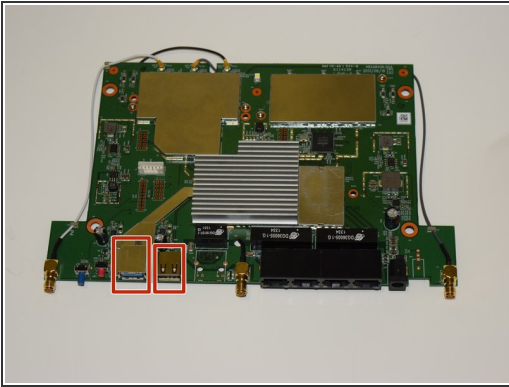
- Use a blue plastic opening tool to remove the top cover.
- Move the blue plastic opening tool gently underneath the top cover from side to side.

Step 4



- Gently lift the motherboard and remove it from the case
- Put the motherboard over a (preferably white) surface.

Step 5 — USB Ports



- Locate the USB ports on both sides of the router motherboard. There are six points on the reverse side where the USB ports are soldered onto.
- Apply the soldering iron carefully to the six points to melt to solder. Touching the motherboard with the solder can damage the circuits.
- ⚠ Be careful with using the soldering iron, it is hot!
- After the solder has melted and been removed, gently pry the USB port with a black spudger to separate it from the motherboard.
- Confirm that all of the old solder has been removed after the USB port is detached from the motherboard.

To reassemble your device, follow these instructions in reverse order.