



# Linksys WAP 11 Antenna Replacement

How to remove or replace the device's antenna.

Written By: Joe M



## INTRODUCTION

Sending and receiving wireless signals requires an antenna. If the antenna is faulty, the device will not work as intended. Replacing the antenna should resolve most connectivity issues.

---

### TOOLS:

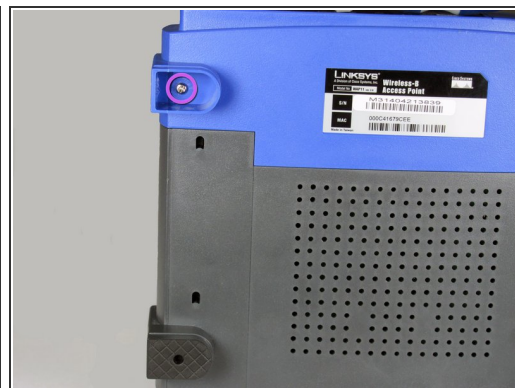
- [Large Needle Nose Pliers](#) (1)
  - [Phillips #1 Screwdriver](#) (1)
  - [Soldering Workstation](#) (1)
  - [Tweezers](#) (1)
-

## Step 1 — Outer Case



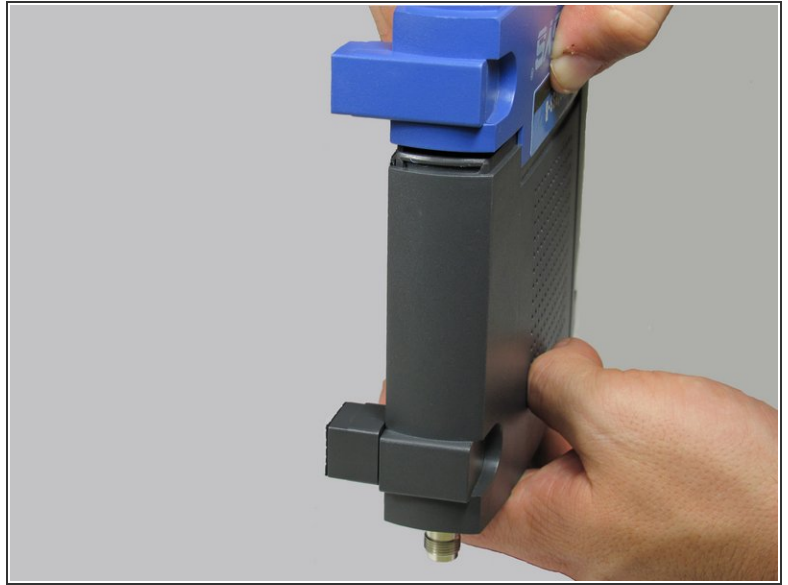
- Be sure the ethernet and power cables are disconnected from the device.
- You should also unscrew the external plastic antennas. There is one antenna on each side of the device.

## Step 2



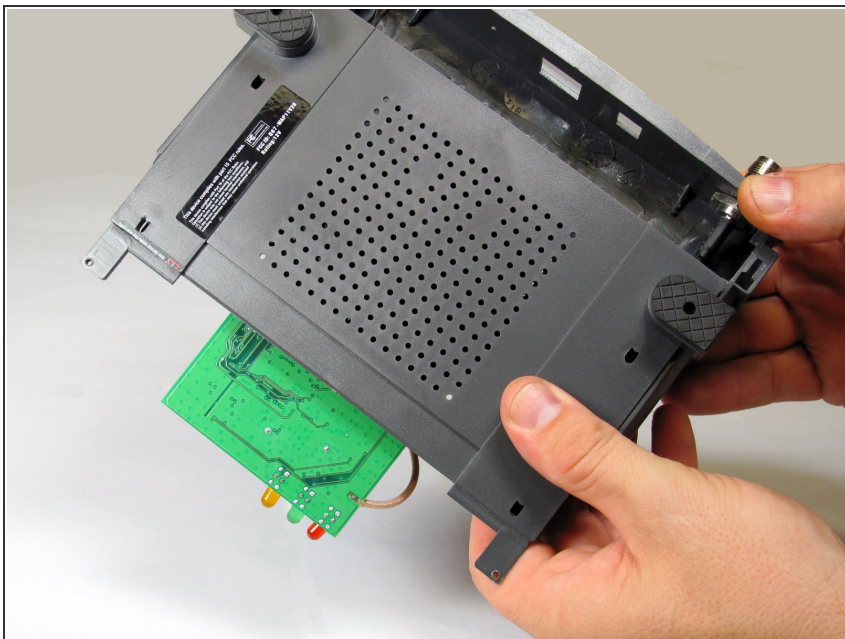
- i** To open the Linksys WAP11, you will need a Phillips #1 screwdriver and a pair of metal tweezers.
- Use the tweezers to remove the two rubber boots on the front two legs. The easiest way to do this is to insert the tweezers into the hole in the face of the boot. Once you are hooked behind the boot, pull outwards.
  - This will reveal two small Phillips-head screws. Remove them.
- i** Keep these two screws together.

### Step 3



- Using two hands (one on the front of the device and the other on the back) apply pressure to the top and bottom seal while pulling the front and back away from each other.
- ⓘ This requires significant amount of force.
- The seal is located where the blue plastic meets the black plastic. This is where you will apply pressure.

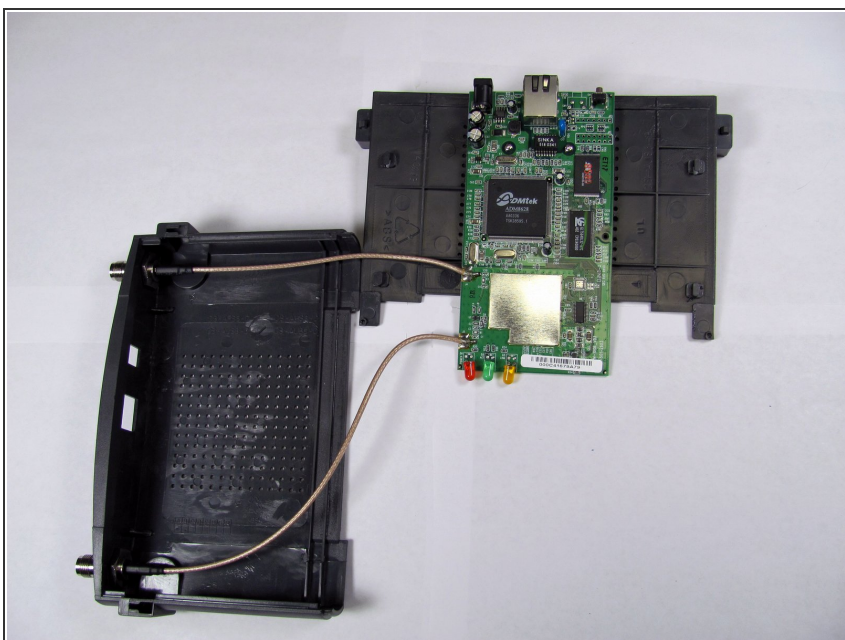
## Step 4



- After the face of the device has been removed, slide the base of the device off to reveal the motherboard and other internal components.

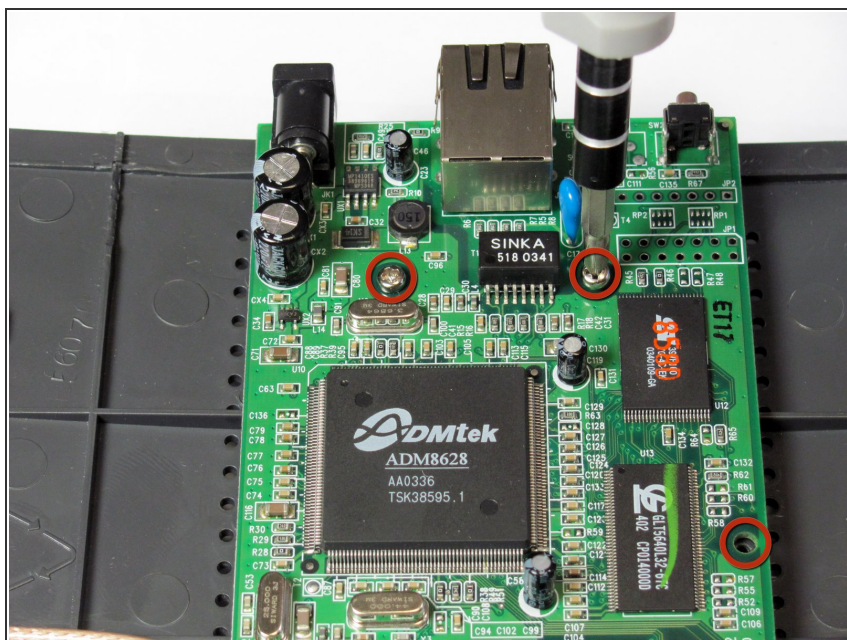
⚠ When removing the base, do not damage the wires that are attached to the device.

## Step 5



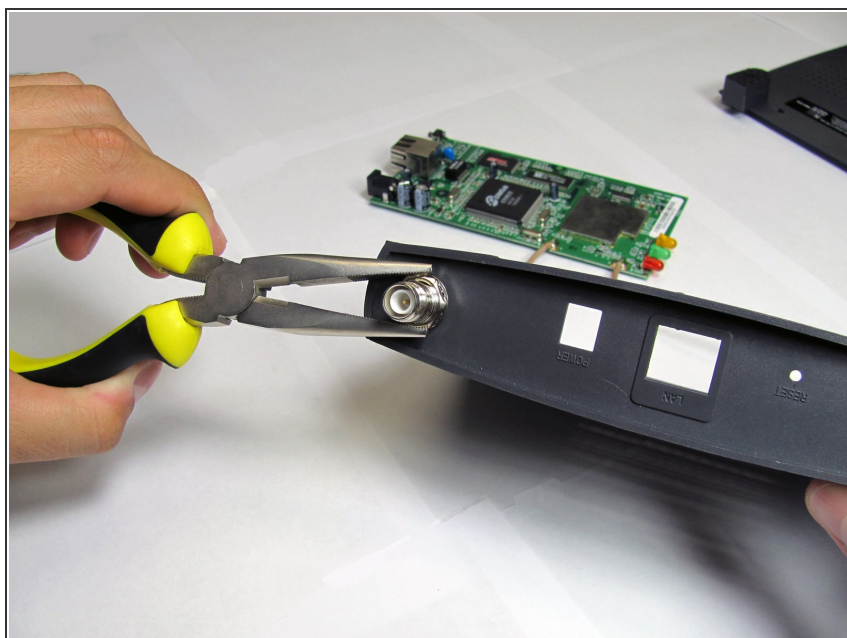
- This is what the device looks like when it is fully opened.

## Step 6 — Antenna



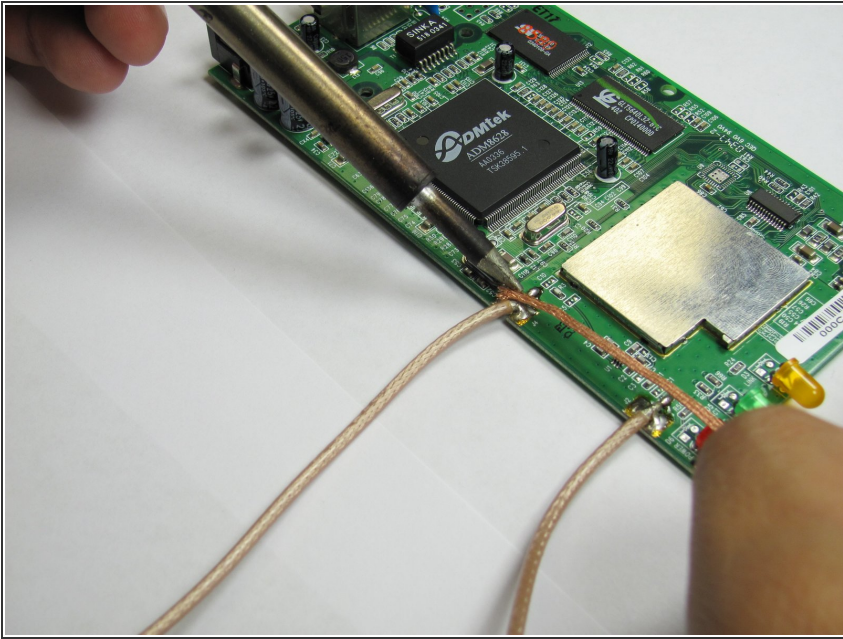
- Using a Phillips screwdriver remove the the three screws that fasten the main circuit board to the chassis.

## Step 7



- Using a pair of needle nose pliers, remove the nuts that secure the antenna ports to the rear panel.

## Step 8



- Using a soldering iron and desoldering wick, desolder and remove the two antennas from the motherboard.
- The antenna can now be replaced with a new one.

To reassemble your device, follow these instructions in reverse order.