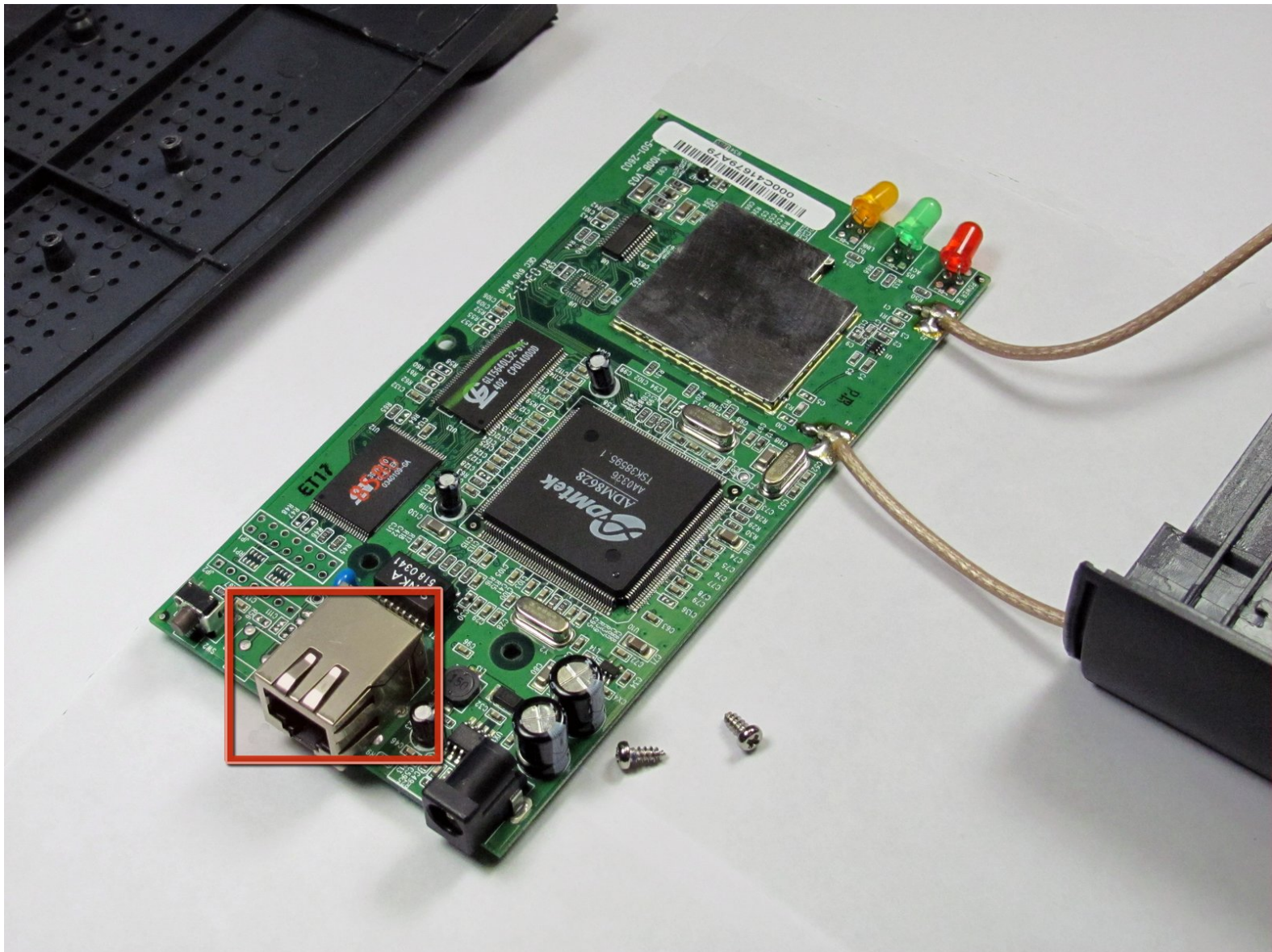




Linksys WAP 11 Network Port Replacement

Remove the main circuit board's network port.

Written By: Joe M



INTRODUCTION

If the network port is faulty, the device can not send or receive information through a wired connection. Replacing the network port may resolve communication issues.

TOOLS:

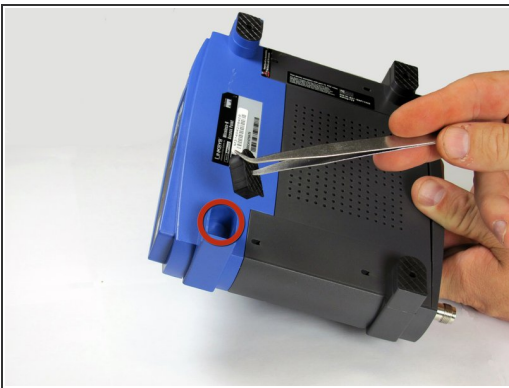
- [Tweezers](#) (1)
 - [Large Needle Nose Pliers](#) (1)
 - [Phillips #1 Screwdriver](#) (1)
 - [Soldering Workstation](#) (1)
-

Step 1 — Outer Case



- Be sure the ethernet and power cables are disconnected from the device.
- You should also unscrew the external plastic antennas. There is one antenna on each side of the device.

Step 2

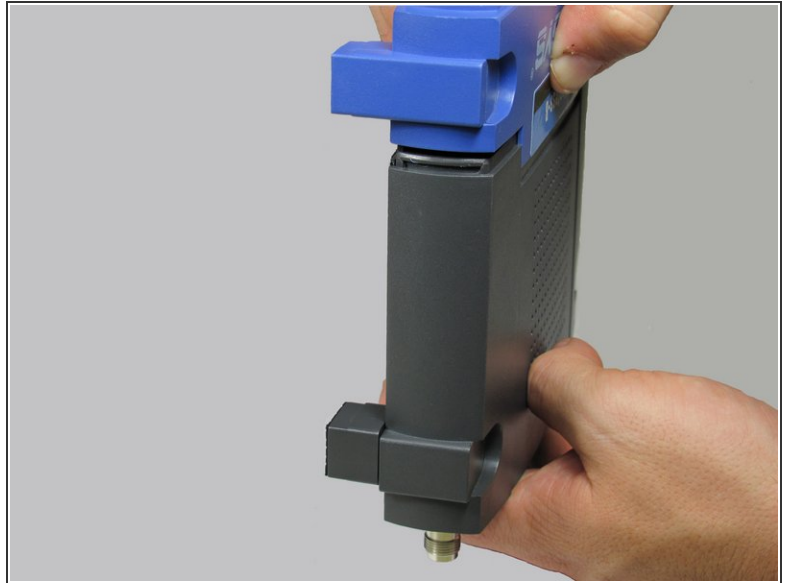


i To open the Linksys WAP11, you will need a Phillips #1 screwdriver and a pair of metal tweezers.

- Use the tweezers to remove the two rubber boots on the front two legs. The easiest way to do this is to insert the tweezers into the hole in the face of the boot. Once you are hooked behind the boot, pull outwards.
- This will reveal two small Phillips-head screws. Remove them.

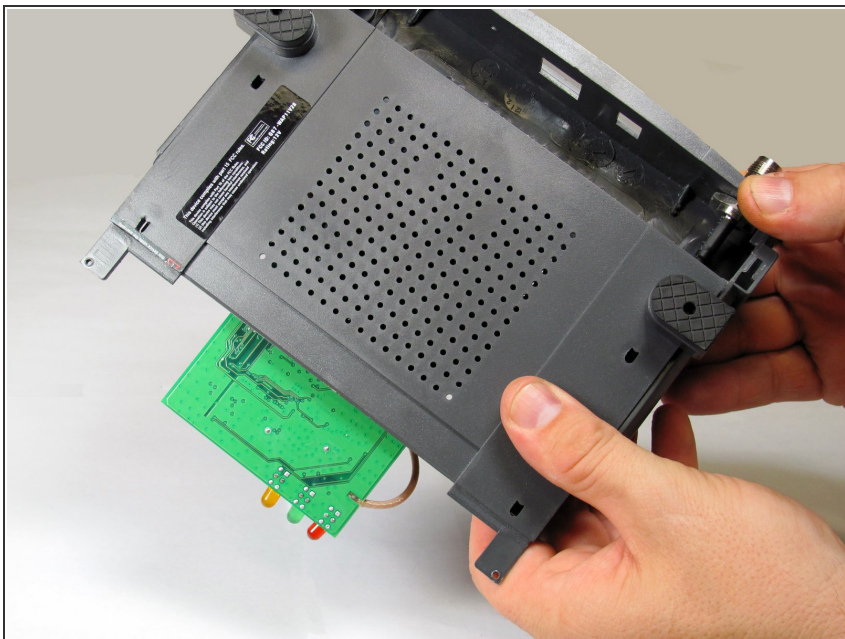
i Keep these two screws together.

Step 3



- Using two hands (one on the front of the device and the other on the back) apply pressure to the top and bottom seal while pulling the front and back away from each other.
- ⓘ This requires significant amount of force.
- The seal is located where the blue plastic meets the black plastic. This is where you will apply pressure.

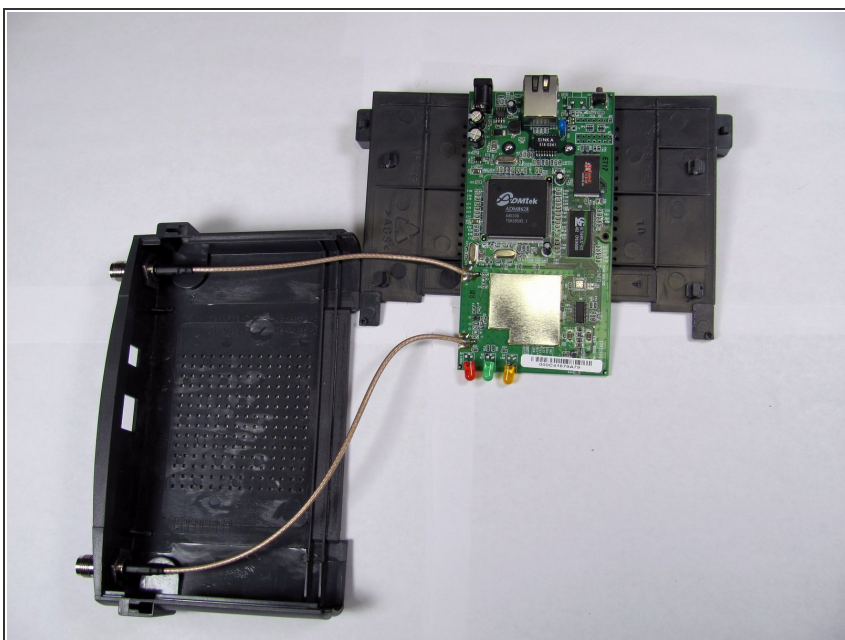
Step 4



- After the face of the device has been removed, slide the base of the device off to reveal the motherboard and other internal components.

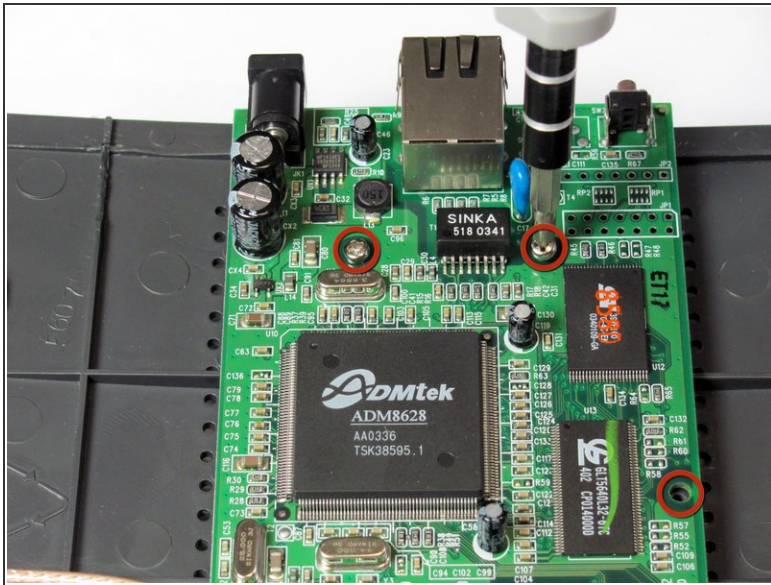
⚠ When removing the base, do not damage the wires that are attached to the device.

Step 5



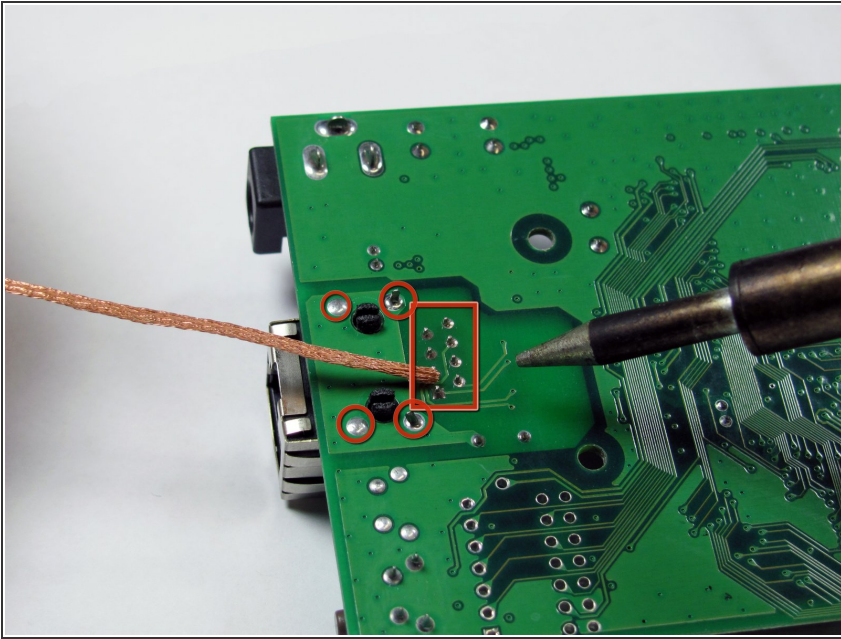
- This is what the device looks like when it is fully opened.

Step 6 — Motherboard



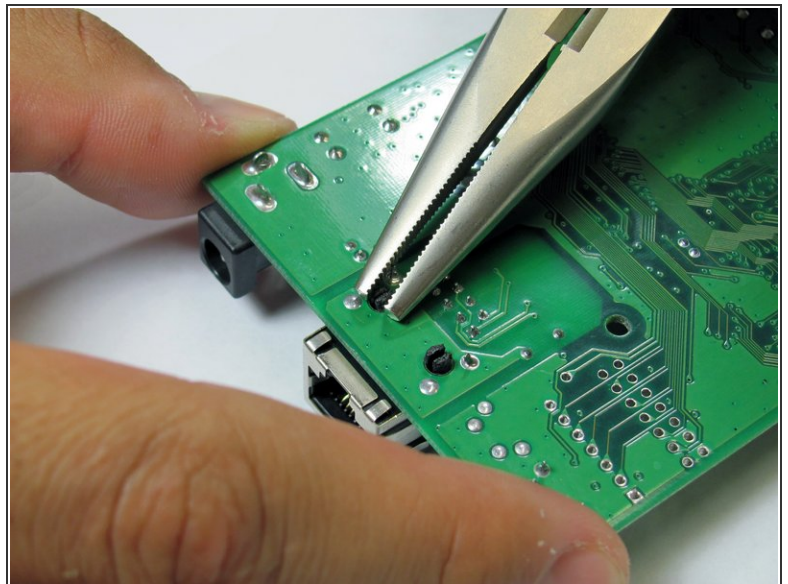
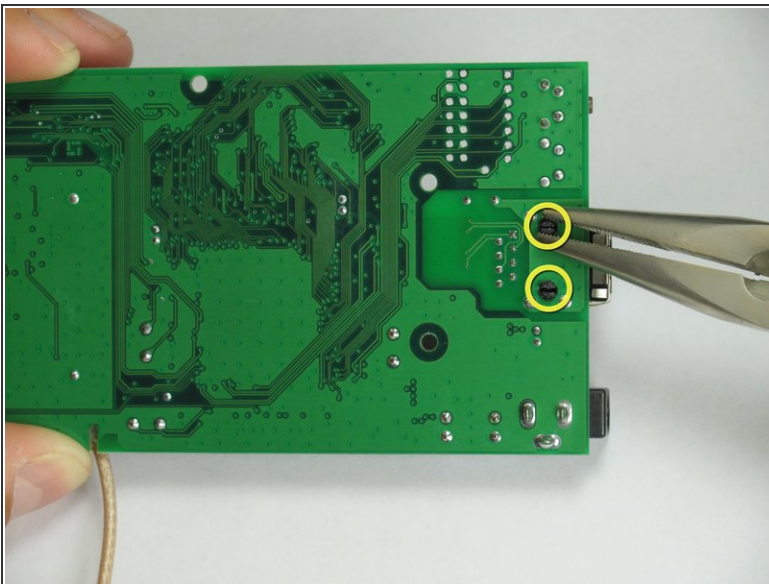
- At this point, you may want to [remove the antenna leads](#) as well.
- Once the antennas have been removed, proceed to remove the remaining three phillips screws fastening the motherboard to the case.
- Once the screws are removed, your motherboard will separate from the housing.
- ⓘ Keep these three screws together and separate from the outer case screws.

Step 7 — Network Port



- [Ifixit soldering guide](#) Soldering and desoldering have the potential for harm, always wear proper eye protection and other personal protective equipment while performing either action!
- Turn the main circuit board around and using a soldering iron and desoldering wick desolder the 12 pins that secure the port to the main board.

Step 8



- Using a pair of needle nose pliers squeeze the two black plastic clips that secure the network port to the board together and then push them through.
- Replace with a new network port and reassemble in reverse order.

To reassemble your device, follow these instructions in reverse order.