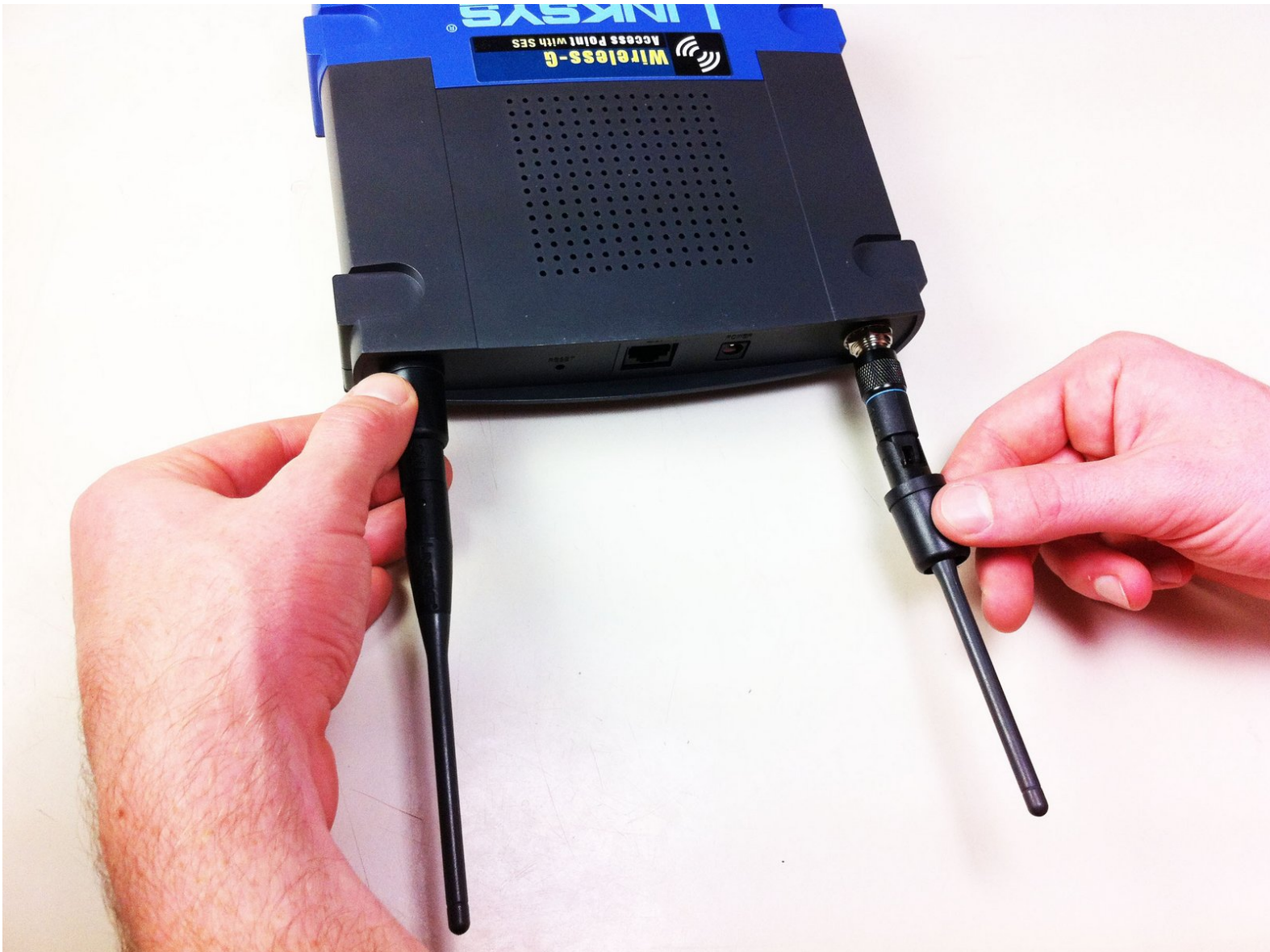




Linksys WAP54g Antennas Replacement

This guide goes over replacing the antennas if they aren't working.

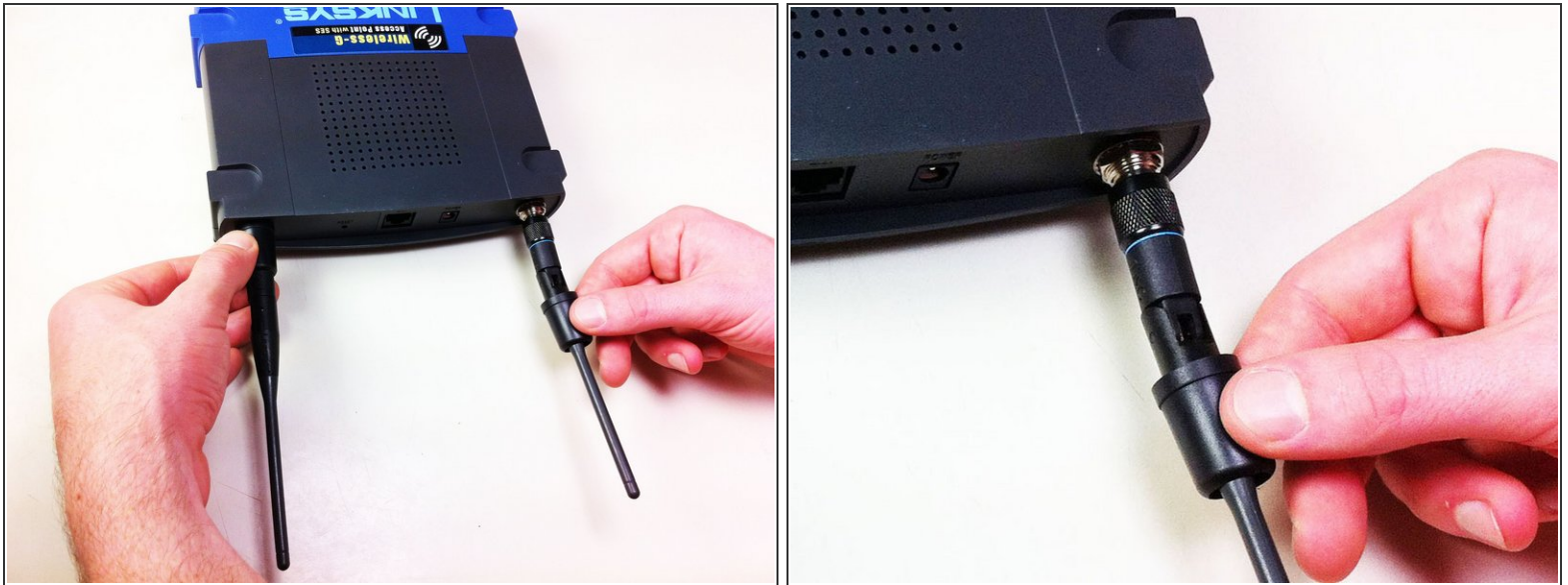
Written By: Derek Myers



INTRODUCTION

If the router isn't working and it is established that the antennas are defective this is the guide for you.

Step 1 — Antennas



- Make sure the antennas are in a straight position, not bent, to remove the black casing.
- Remove the casing by pulling straight up. This will make unscrewing the antenna easier.

Step 2



- Grip antenna at the base and twist counter-clockwise to unscrew it from the device. The base should have a rough feel to it.

Step 3



- Once antenna is completely detached, obtain the new antenna, and place it on device so the threads line up.

Step 4



- Screw antenna onto device by twisting the base of the antenna in a clockwise motion until it is tight and does not turn any further.

Step 5



- Place the black casing, which was removed in step 1, back onto the base of the antenna to cover up exposed metal.
- Repeat these steps for other antenna.

After the repairs are made the device should working.