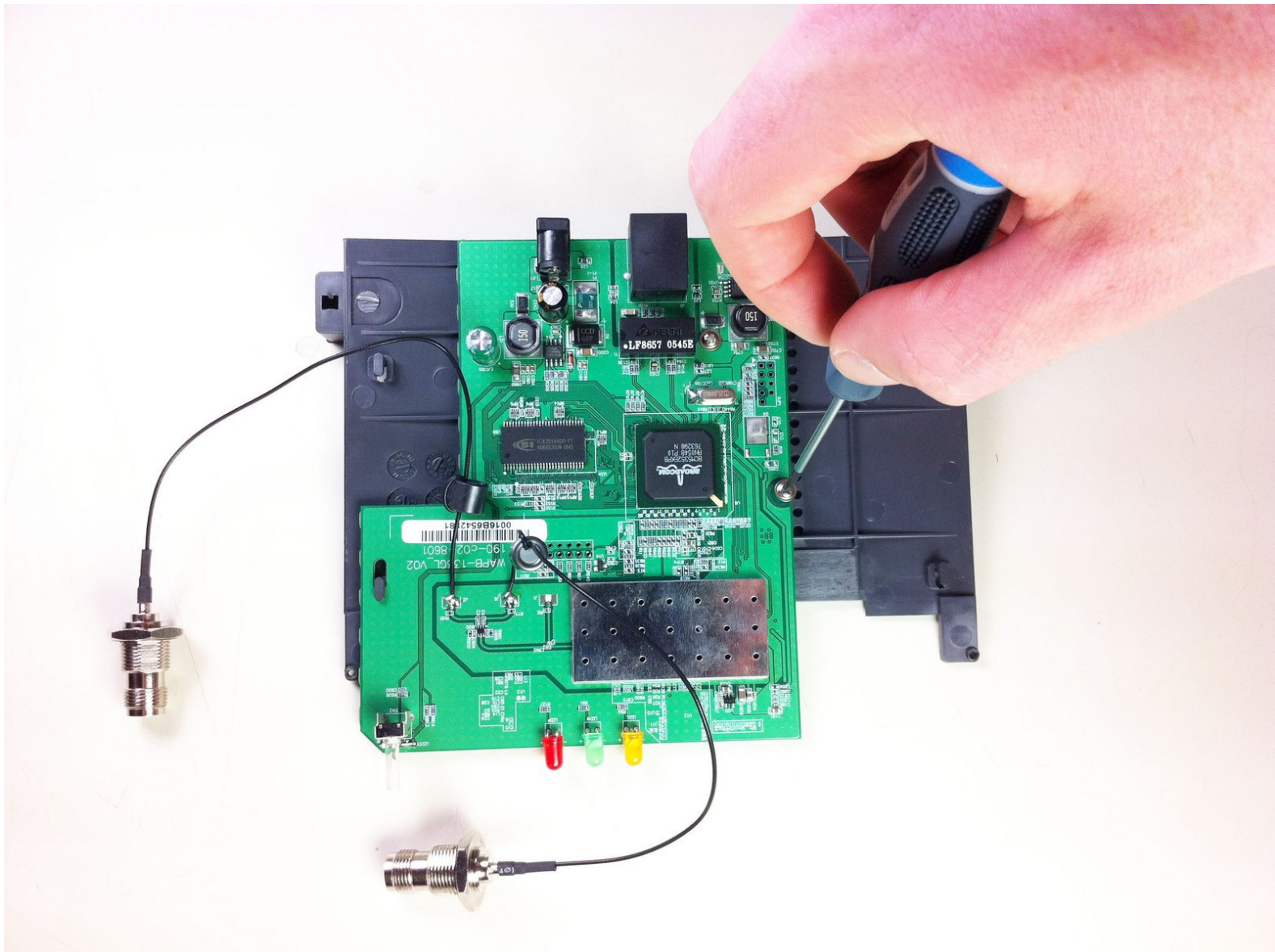




# Linksys WAP54g Bottom Casing/Motherboard Replacement

This guide will show how to remove the bottom casing and the motherboard to allow replacement and component level repair.

Written By: Mathew Fuller



---

## INTRODUCTION

After the top casing is removed we can remove the bottom casing to isolate the motherboard.



### TOOLS:

- [Phillips #00 Screwdriver](#) (1)
-

## Step 1 — Top Casing



- Power down and unplug the device.

## Step 2



- Remove the antennas from the back of the device. To do this, follow steps 1 and 2 of Installing the Antennas Guide: [Linksys WAP54g Antennas Replacement](#)

## Step 3



- Remove the two black rubber feet of the device using the screwdriver. The feet are located on the bottom towards the front.



## Step 4




- Once the feet are removed, two small screws will be visible. With a small screwdriver, unscrew them. Screws are phillips head, 4.35 mm in diameter, 7.88 mm in length.

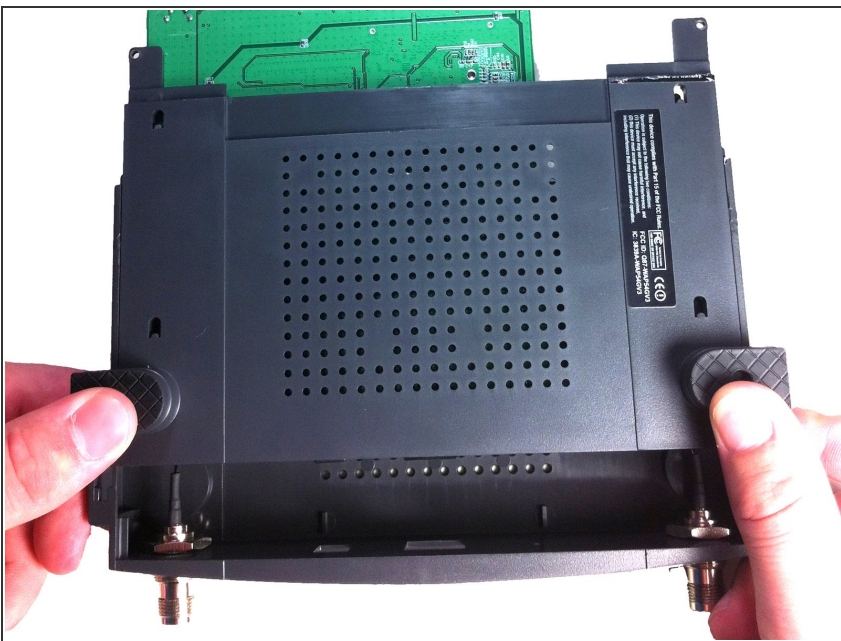
## Step 5



- To remove the front blue panel, grip firmly and place thumbs in the two notches on top. Push thumbs forward while keeping a firm grip on bottom.

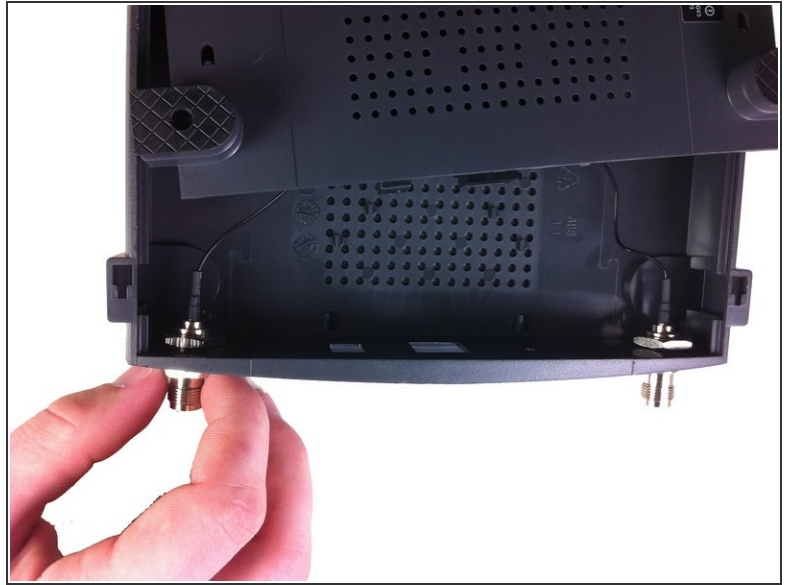
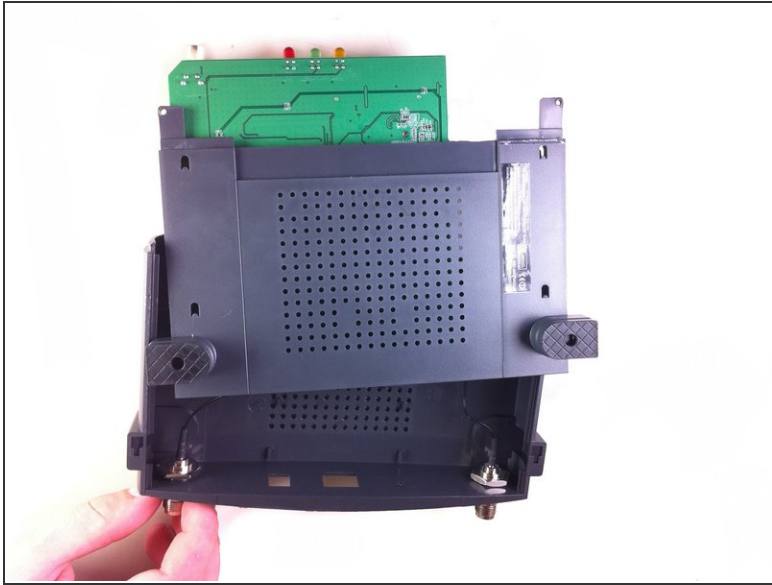
 This may require a bit of force.

## Step 6



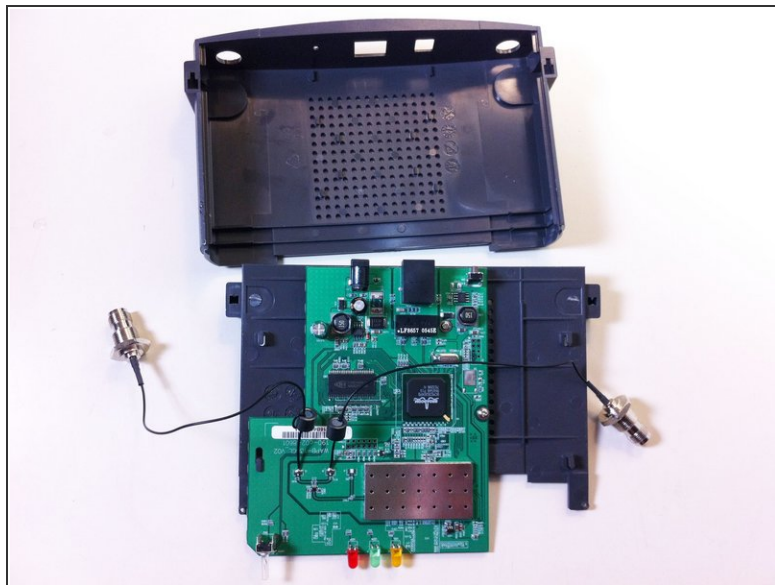
- Now slide the bottom panel forward and remove it so the top casing is isolated from the bottom casing and motherboard.

## Step 7



- Unscrew the nut on the outer side of the back casing. Remove the nut and the washer from both antenna mounts.

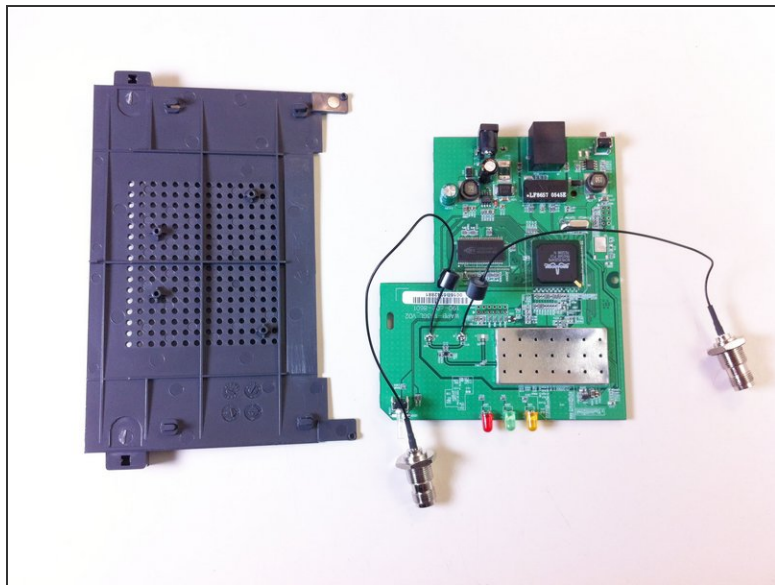
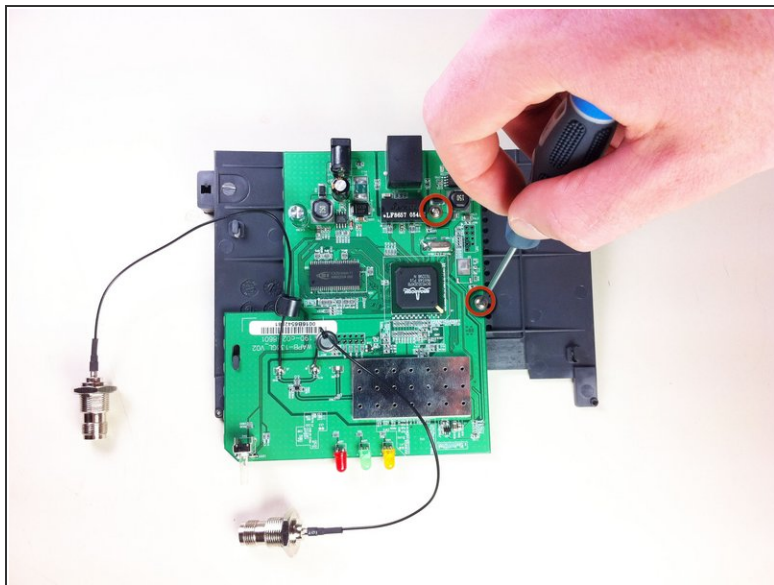
## Step 8



- From here, remove the wires and nuts connected to the back panel by pulling the nuts through the holes.
- Now the top casing has been removed and isolated from the rest of the device. From here, you can make repairs to the top casing.
- ⓘ Once the top panel is removed the main board will still be attached to the bottom panel.



## Step 9 — Bottom Casing/Motherboard



- Unscrew the two screws that connect the motherboard to the bottom casing.
- ⓘ The motherboard and bottom casing should be completely separated at this point. This allows for replacement of the motherboard and/ or its components as well as the bottom casing.

After the motherboard is isolated component level repairs can be made.