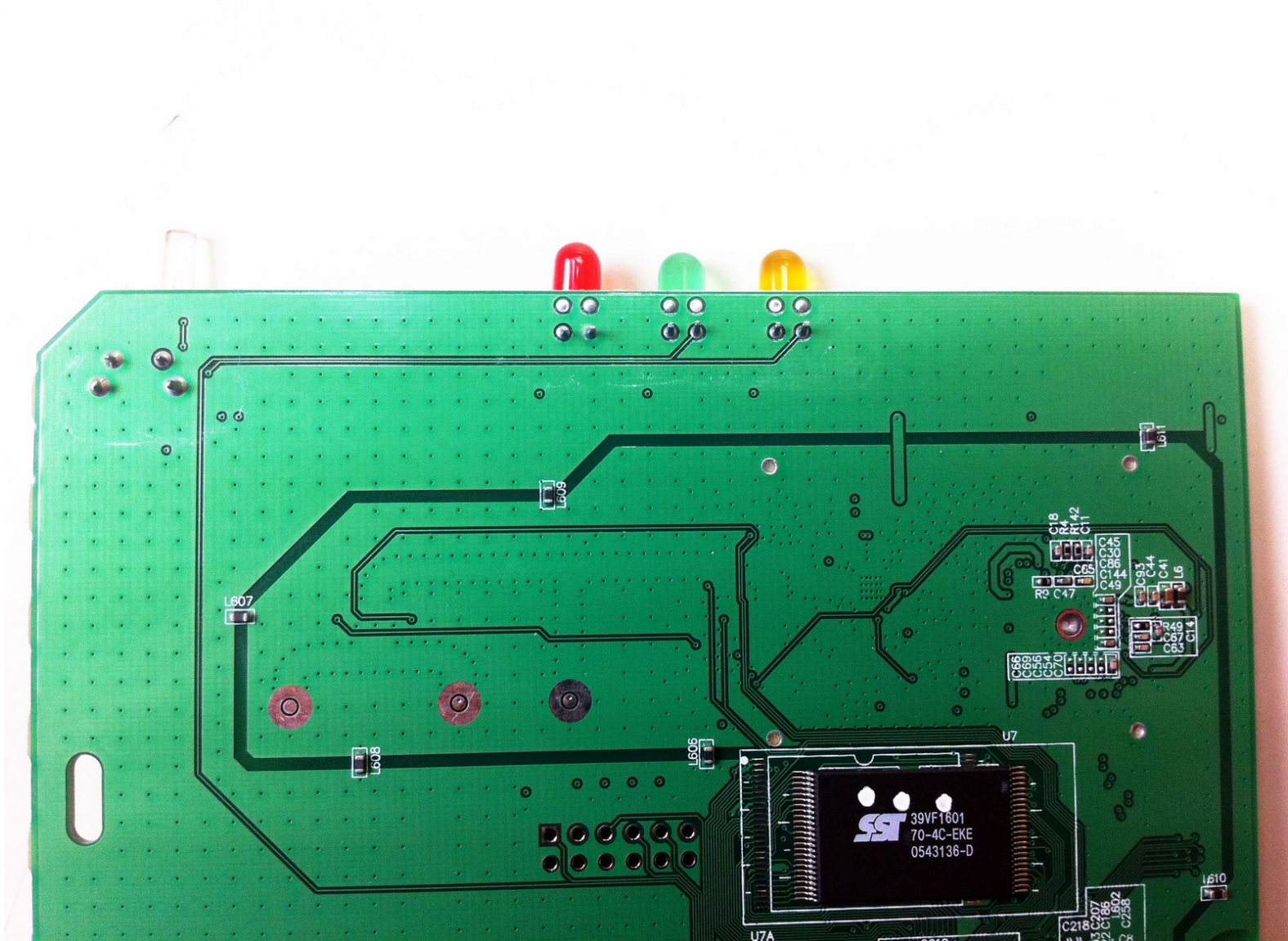




Linksys WAP54g LED Lights Replacement

If the status lights aren't on and the router seems to be working this is the guide for you! This guide deals with replacing the LED lights by desoldering and soldering the lights.

Written By: Derek Myers



INTRODUCTION

You will start by isolating the motherboard and then continue to make the suggested repairs by soldering.



TOOLS:

- [Soldering Iron](#) (1)
-

Step 1 — Top Casing



- Power down and unplug the device.

Step 2



- Remove the antennas from the back of the device. To do this, follow steps 1 and 2 of Installing the Antennas Guide: [Linksys WAP54g Antennas Replacement](#)

Step 3



- Remove the two black rubber feet of the device using the screwdriver. The feet are located on the bottom towards the front.

Step 4




- Once the feet are removed, two small screws will be visible. With a small screwdriver, unscrew them. Screws are phillips head, 4.35 mm in diameter, 7.88 mm in length.

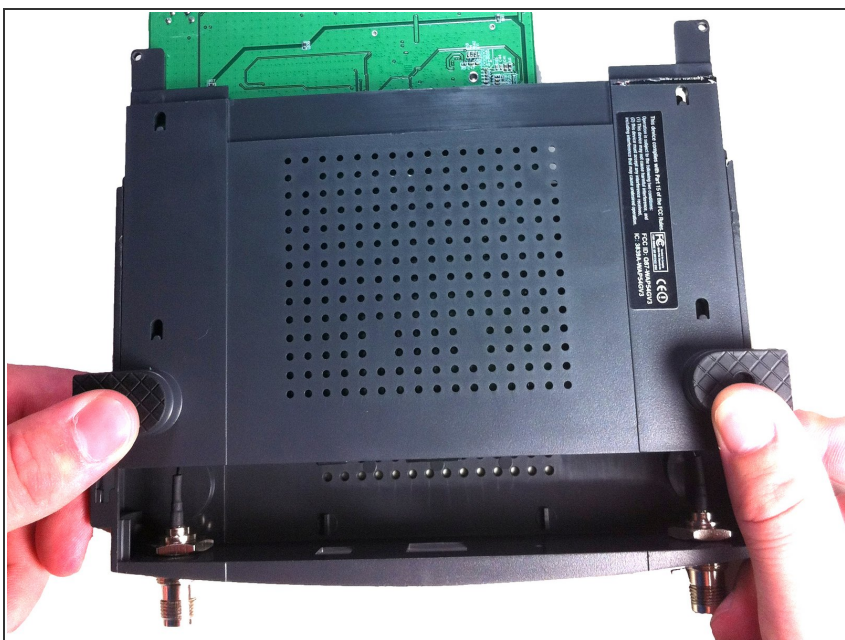
Step 5



- To remove the front blue panel, grip firmly and place thumbs in the two notches on top. Push thumbs forward while keeping a firm grip on bottom.

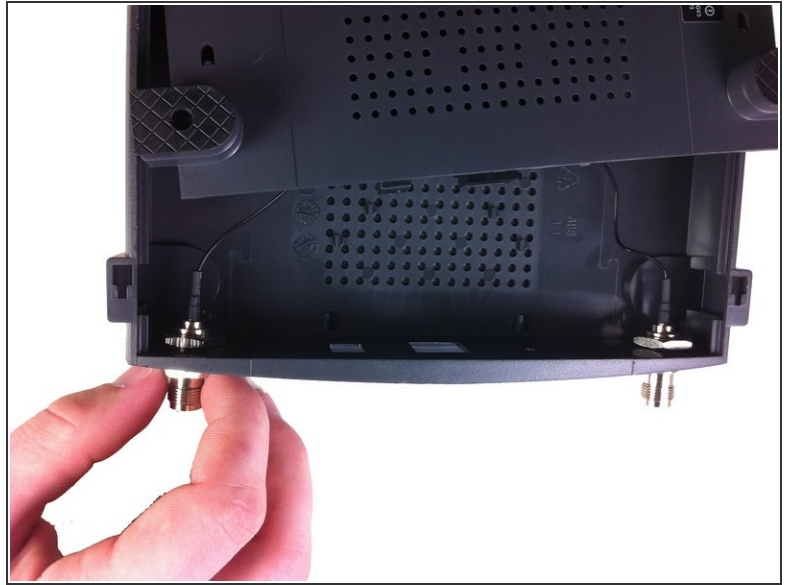
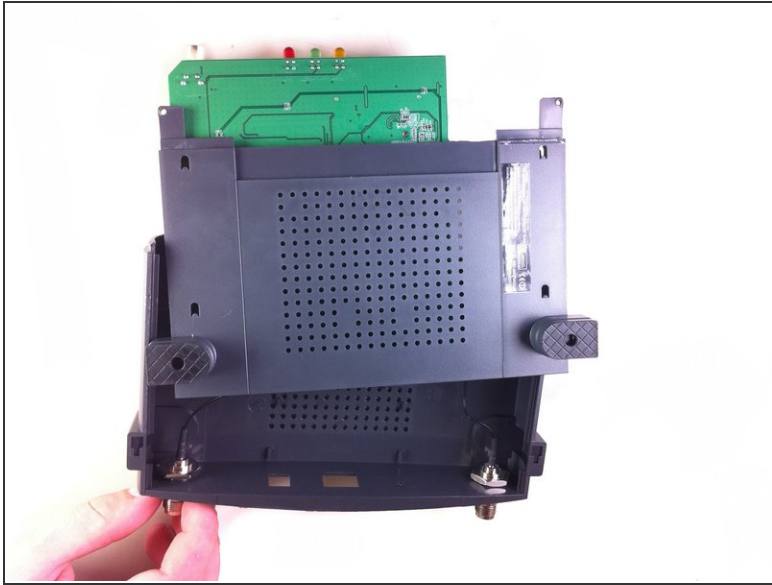
 This may require a bit of force.

Step 6



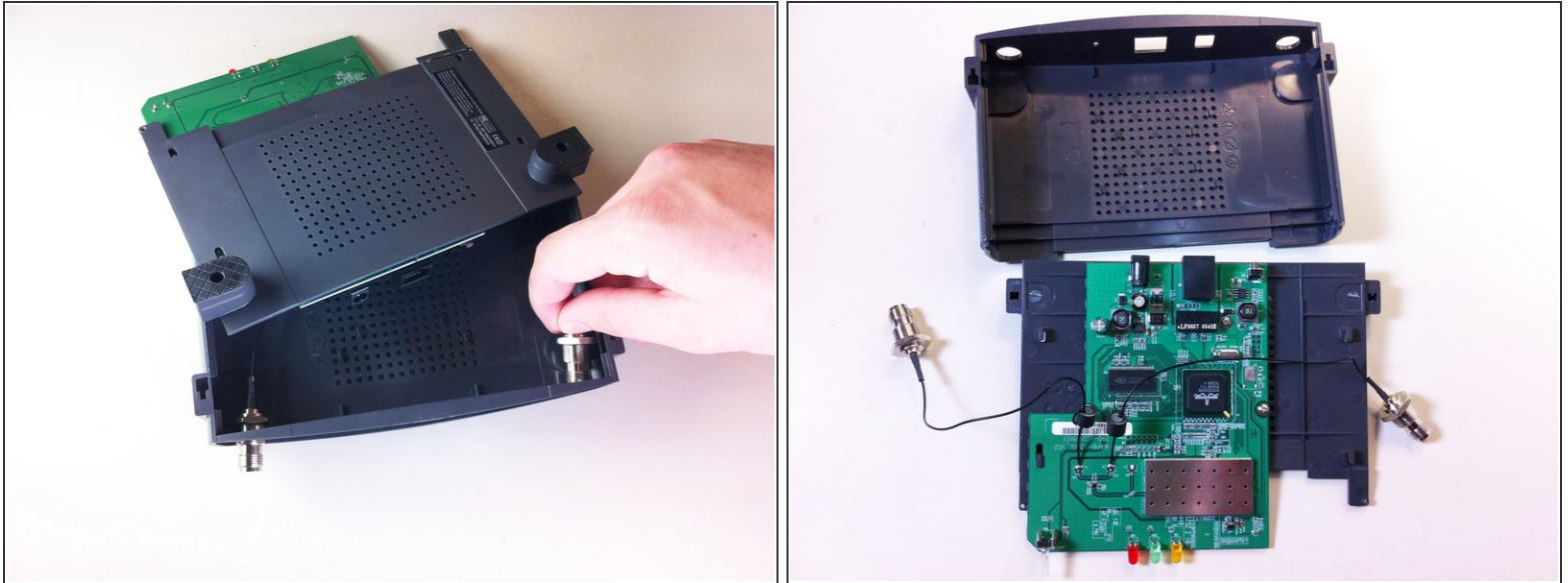
- Now slide the bottom panel forward and remove it so the top casing is isolated from the bottom casing and motherboard.

Step 7



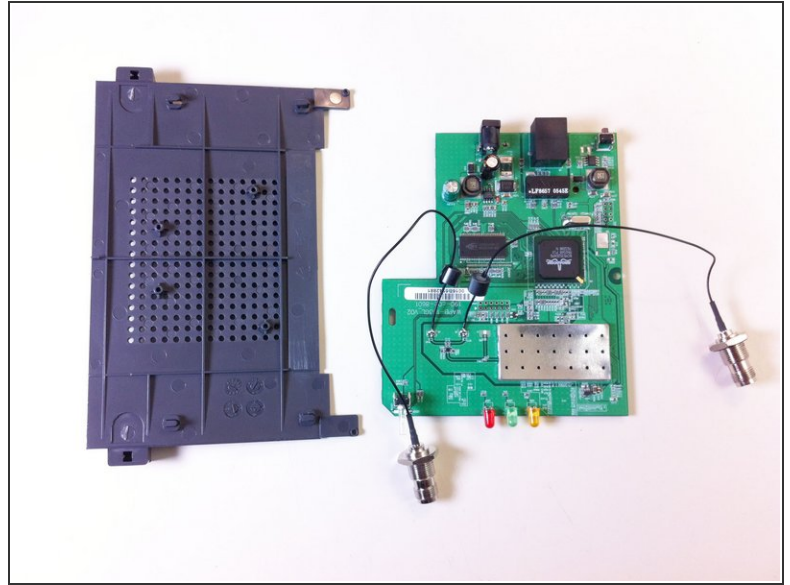
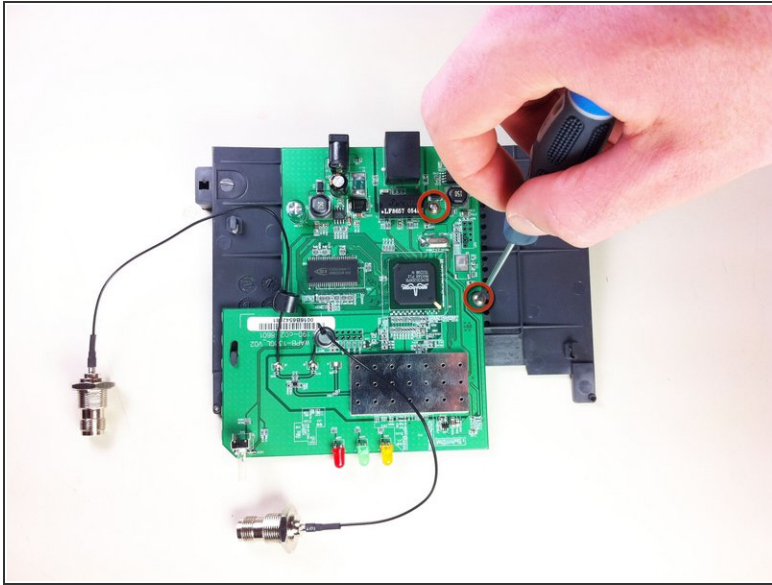
- Unscrew the nut on the outer side of the back casing. Remove the nut and the washer from both antenna mounts.

Step 8



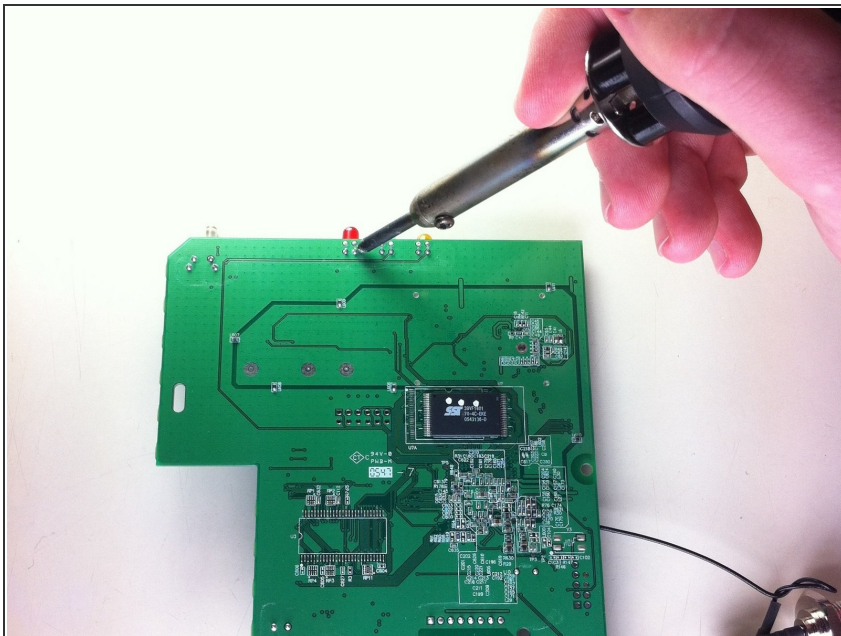
- From here, remove the wires and nuts connected to the back panel by pulling the nuts through the holes.
- Now the top casing has been removed and isolated from the rest of the device. From here, you can make repairs to the top casing.
- ⓘ Once the top panel is removed the main board will still be attached to the bottom panel.

Step 9 — Bottom Casing/Motherboard



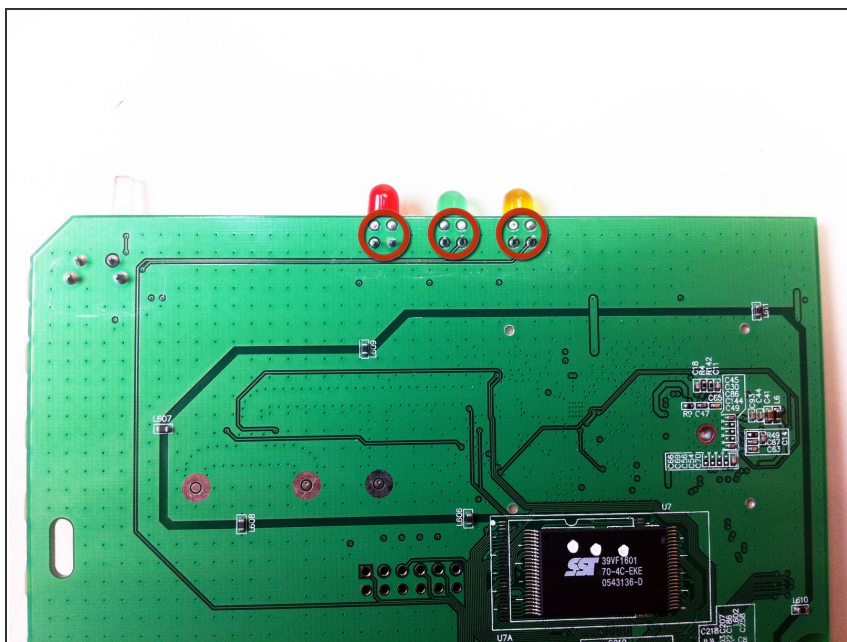
- Unscrew the two screws that connect the motherboard to the bottom casing.
- ⓘ The motherboard and bottom casing should be completely separated at this point. This allows for replacement of the motherboard and/ or its components as well as the bottom casing.

Step 10 — LED Lights



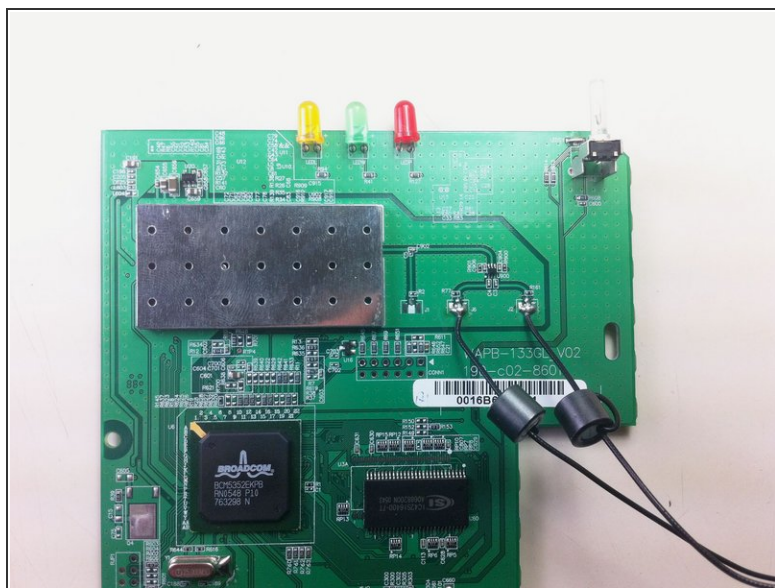
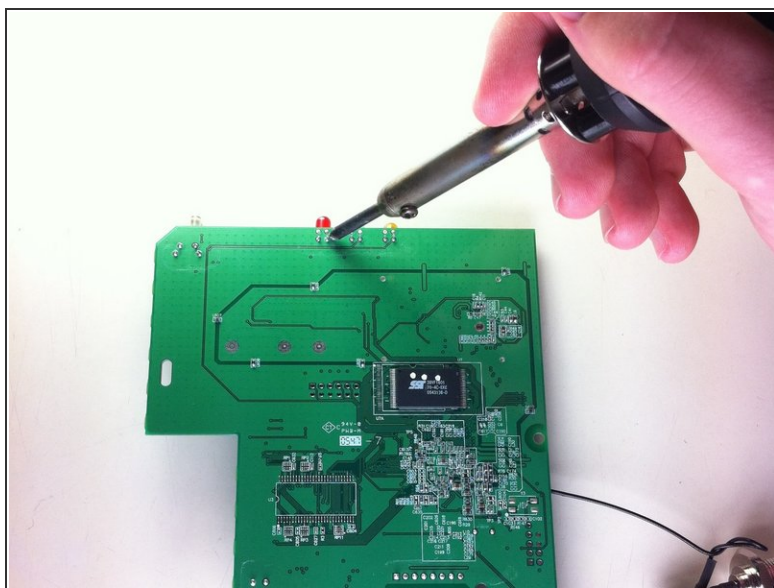
- Using a soldering iron, desolder the LED lights from the bottom of the logic board.
- For help with soldering or desoldering refer to ifixit's soldering guide: [How To Solder and Desolder Connections](#)

Step 11



- Place new LED lights through holes created by desoldering and removing old lights.

Step 12



- Solder the lights onto the bottom of the board to solidify the connection and make electrical contact.
- Follow the Installing the Casing guide in reverse to re-assemble your device.

Once the soldering is complete, the device should work and the LED lights should light up.