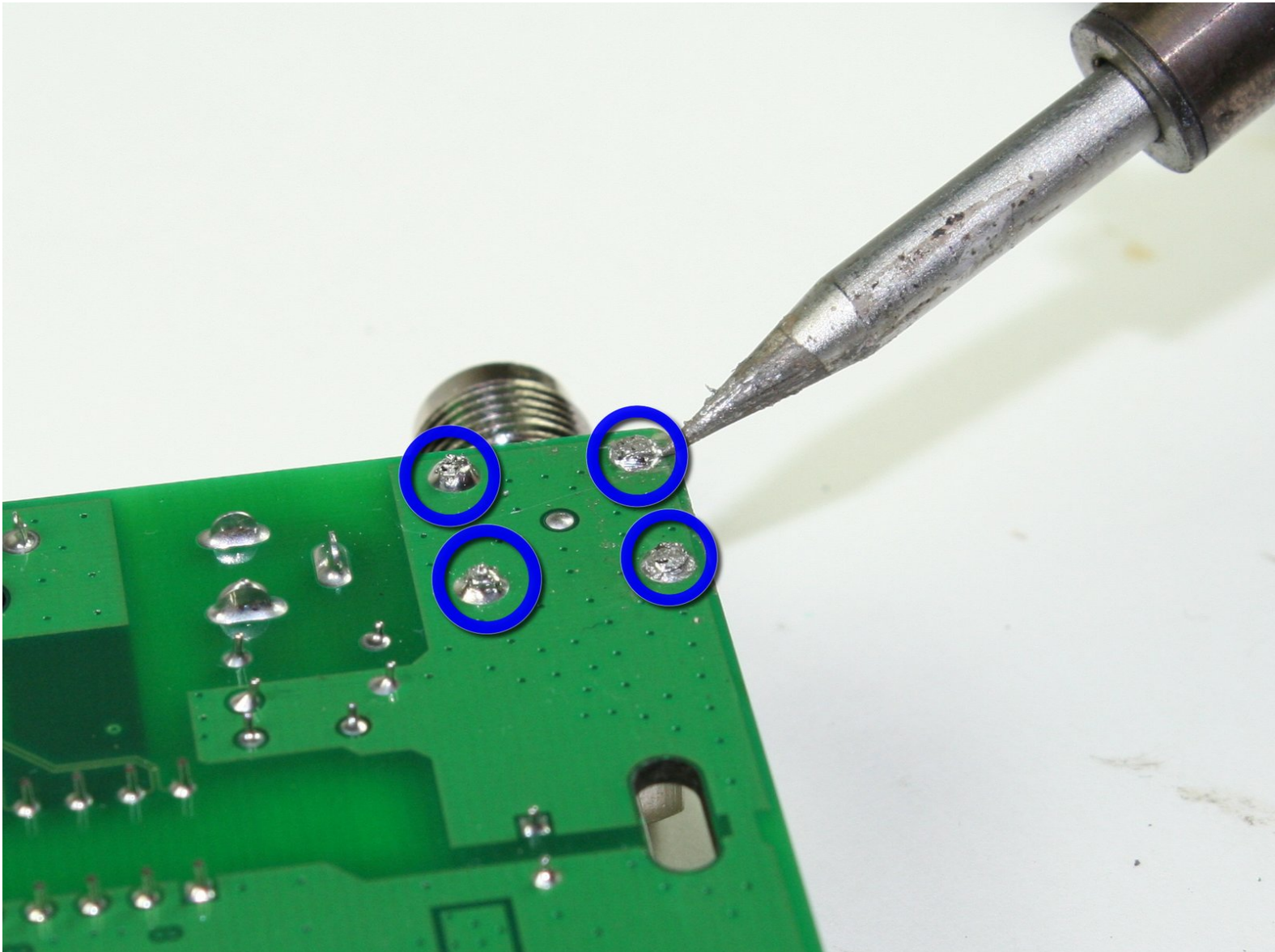




Linksys WRT54G Motherboard Component Replacement

This guide demonstrates how to desolder and remove a functional component for replacement.

Written By: Nicole C



INTRODUCTION

If, after reading through this guide, you are still in need of assistance, please refer back to the [device page](#) or the [troubleshooting page](#).

TOOLS:

- [Desoldering Braid](#) (1)
 - [Soldering Workstation](#) (1)
 - [Phillips #0 Screwdriver](#) (1)
-

Step 1 — Antennas



- Unfold the antennas straight away from the device.

Step 2



- Remove the black caps from the antennas by pulling them away from the device.

Step 3



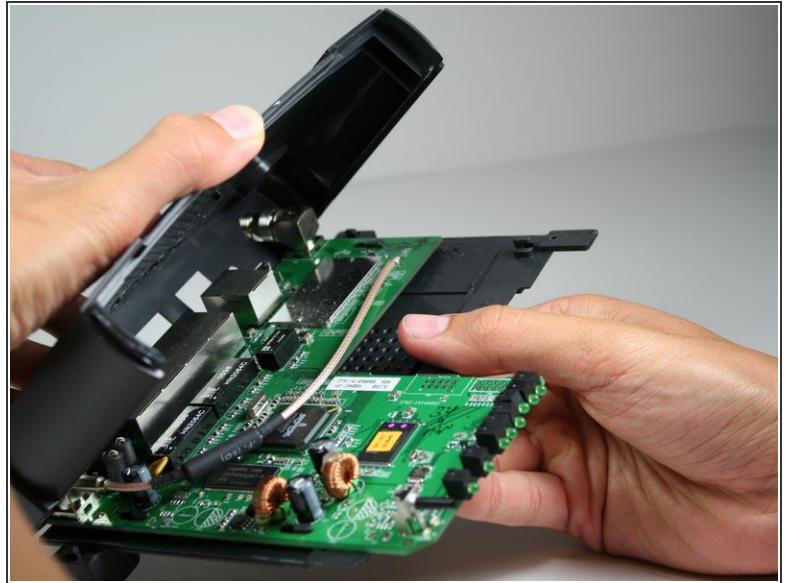
- Unscrew each of the antennas from the wireless device.

Step 4 — Casing



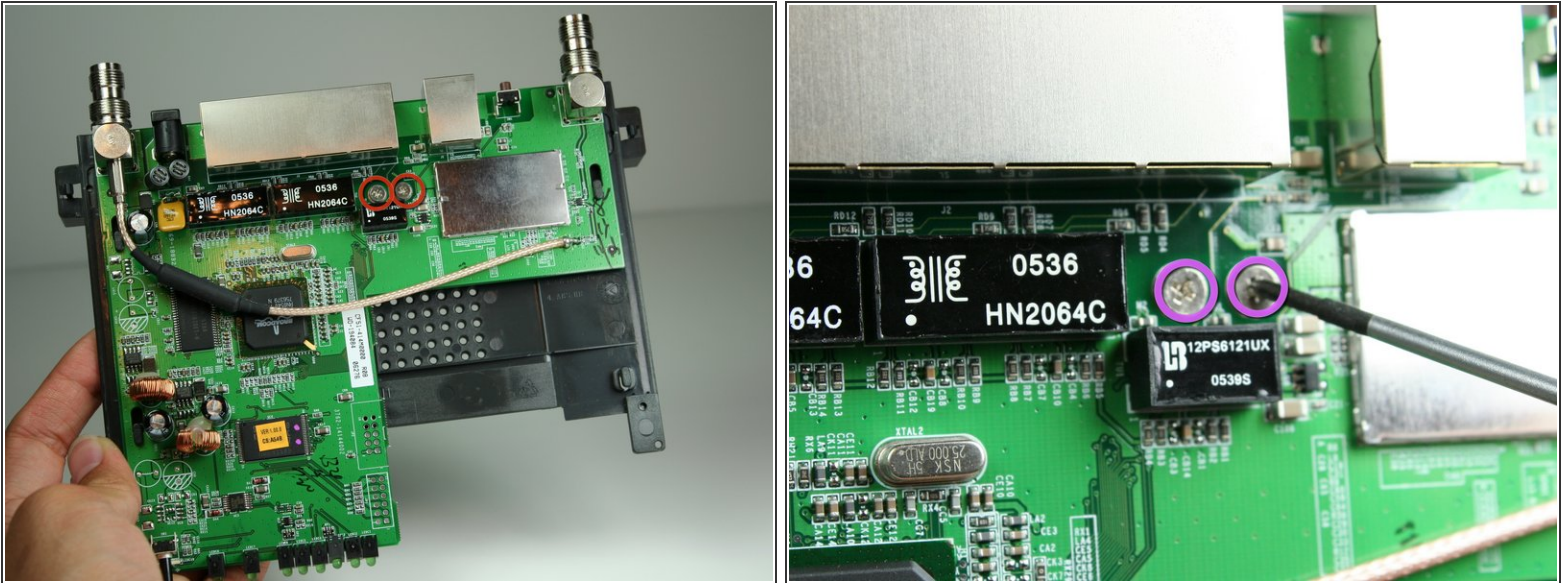
- Using a bit of force, remove the blue plastic case.

Step 5 — Motherboard



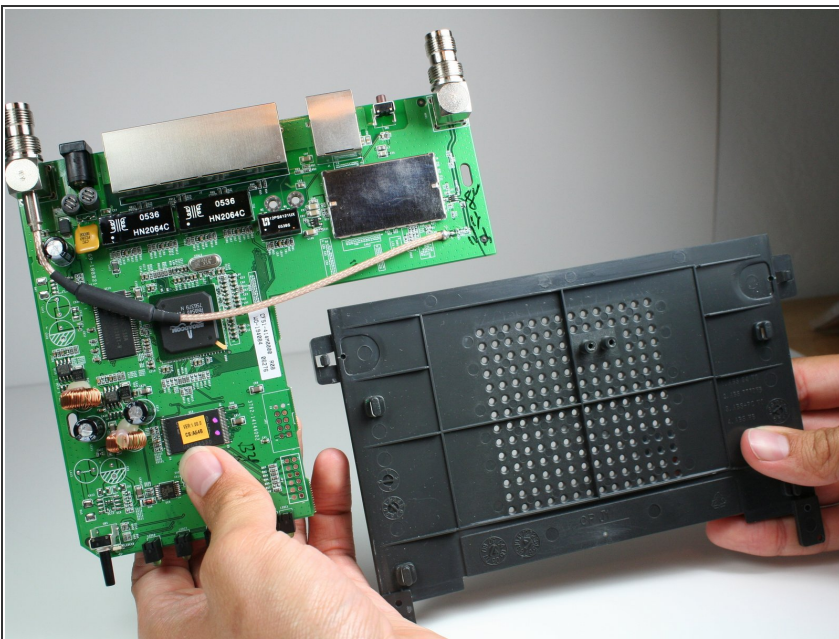
- To remove the black casing that surrounds the green motherboard, slide the top half of the casing backwards. It only moves a very short distance.
- Pull the top piece upwards and away from the bottom to remove.

Step 6



- Locate the 2 M2.5x6mm screws that attach the motherboard to the back case.
- Remove the two screws from the motherboard as indicated with the Phillips head screwdriver.

Step 7



- Once screws have been removed, slide the motherboard in the direction of its LED lights.
- Lift motherboard up and away from the black lower casing.

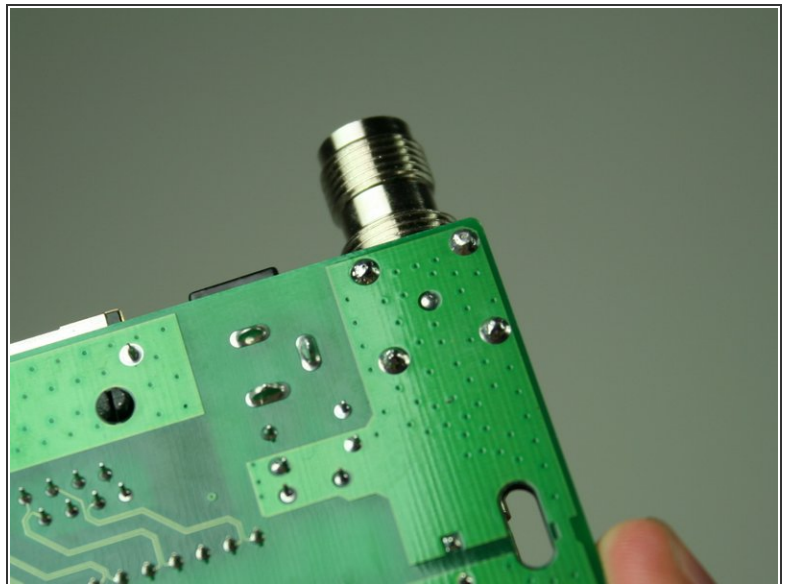
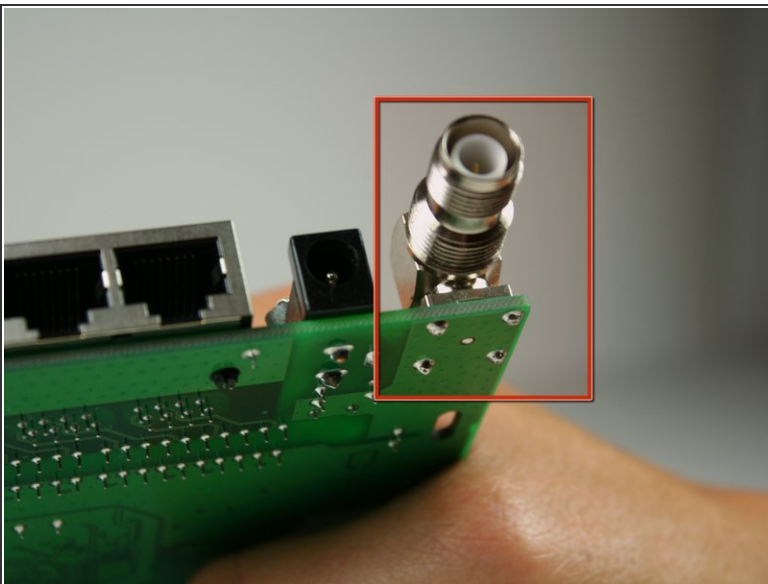
Step 8 — Motherboard Component



- Obtain a desoldering wick ([Desoldering Braid](#)). Plug in soldering iron and allow to heat. For soldering information, refer to the iFixit soldering guide ([How To Solder and Desolder Connections](#)).

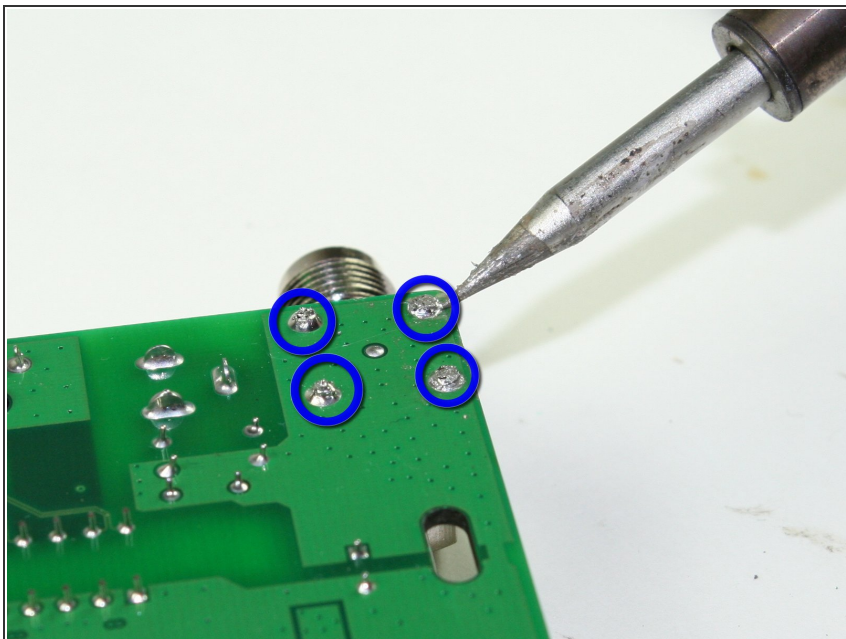
⚠ Make sure that the soldering iron is not resting on top of anything that would be damaged by the heat.

Step 9



- Identify the functional component which will be removed.
- Turn the board over so that the pins holding the component in are exposed.

Step 10



- Desolder each pin using the iFixit Soldering Guide ([How To Solder and Desolder Connections](#)). Gently remove functional component for replacement.

To reassemble your device, follow these instructions in reverse order.