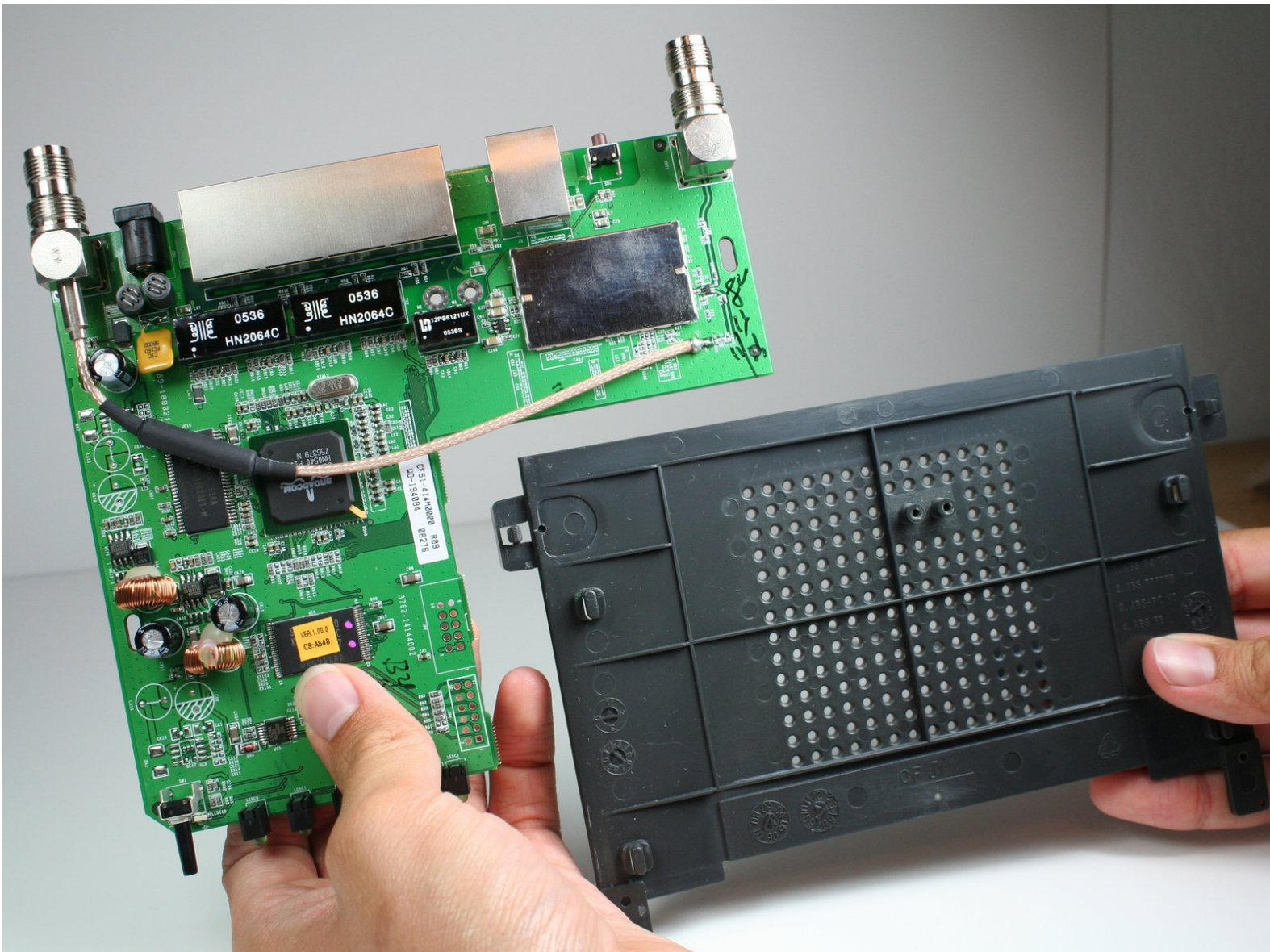




# Linksys WRT54G Motherboard Replacement

This repair guide will show you how to disconnect the mother board from the bottom casing.

Written By: Aaron Brown



---

## INTRODUCTION

If, after reading through this guide, you are still in need of assistance, please refer back to the [device page](#) or the [troubleshooting page](#).

---



### TOOLS:

- [Phillips #0 Screwdriver](#) (1)
-

## Step 1 — Antennas



- Unfold the antennas straight away from the device.

## Step 2



- Remove the black caps from the antennas by pulling them away from the device.



### Step 3



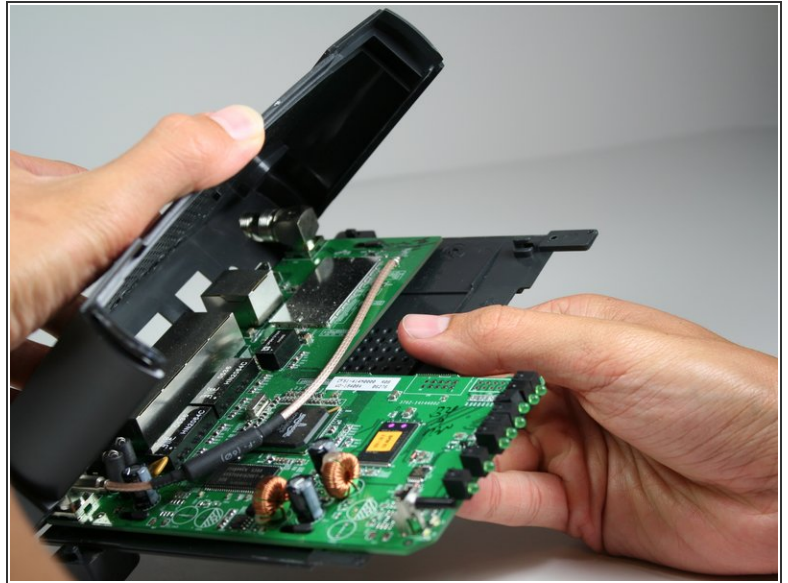
- Unscrew each of the antennas from the wireless device.

### Step 4 — Casing



- Using a bit of force, remove the blue plastic case.

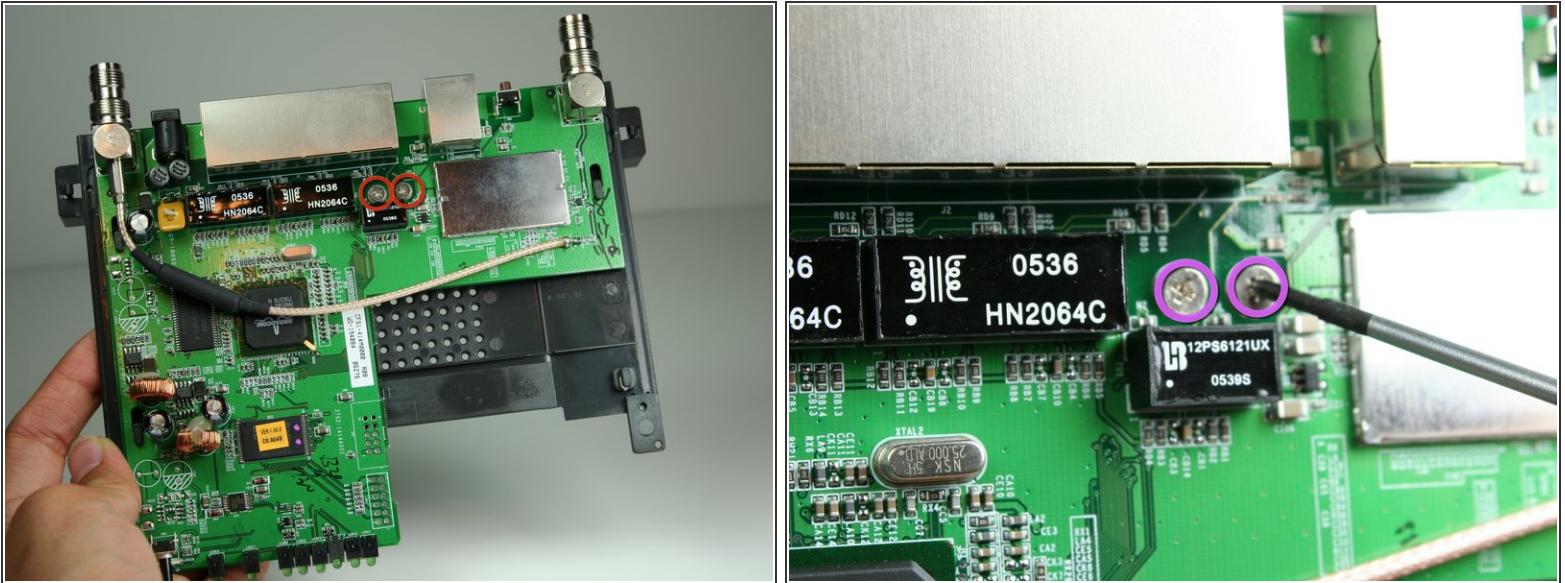
## Step 5 — Motherboard



- To remove the black casing that surrounds the green motherboard, slide the top half of the casing backwards. It only moves a very short distance.
- Pull the top piece upwards and away from the bottom to remove.

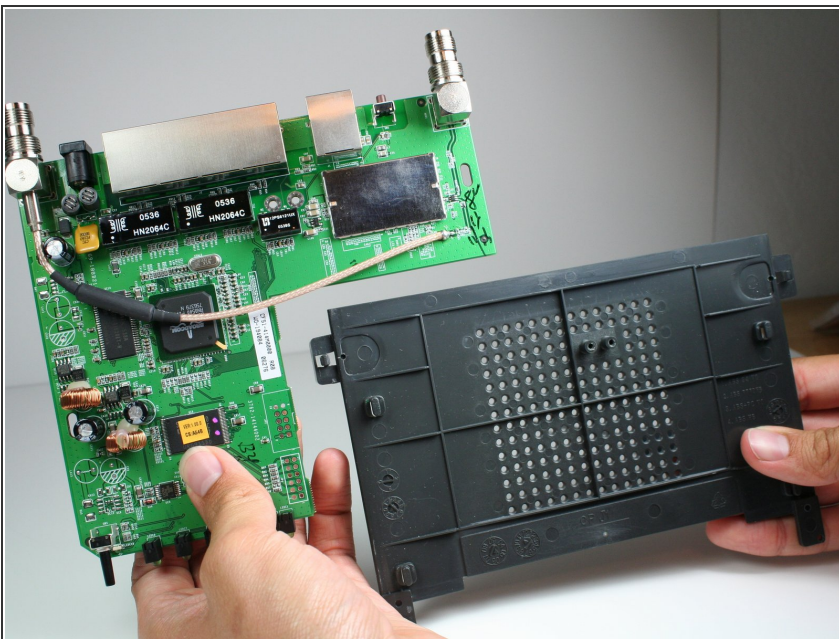


## Step 6



- Locate the 2 M2.5x6mm screws that attach the motherboard to the back case.
- Remove the two screws from the motherboard as indicated with the Phillips head screwdriver.

## Step 7



- Once screws have been removed, slide the motherboard in the direction of its LED lights.
- Lift motherboard up and away from the black lower casing.

To reassemble your device, follow these instructions in reverse order.