



Linksys WRT54G Teardown

This guide will give you a look at the internals of a Linksys WRT54G Router.

Written By: Reed Crosby



INTRODUCTION

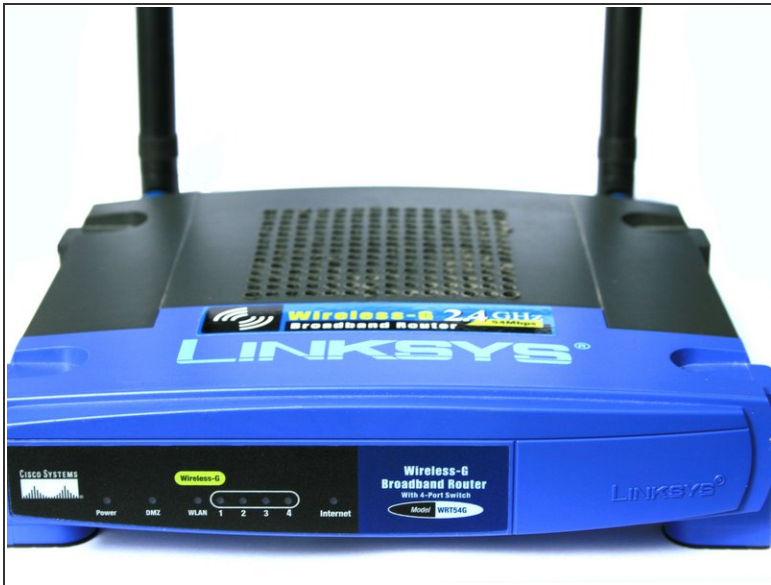
I will teach you how to disassemble this Router



TOOLS:

- [Phillips #2 Screwdriver](#) (1)
 - [Flathead 3/32" or 2.5 mm Screwdriver](#) (1)
-

Step 1 — Get your Linksys



- The Linksys WRT54G series is a series of Wi-Fi gateways manufactured by Linksys, a subsidiary of Cisco Systems.

Step 2 — Antenna Removal



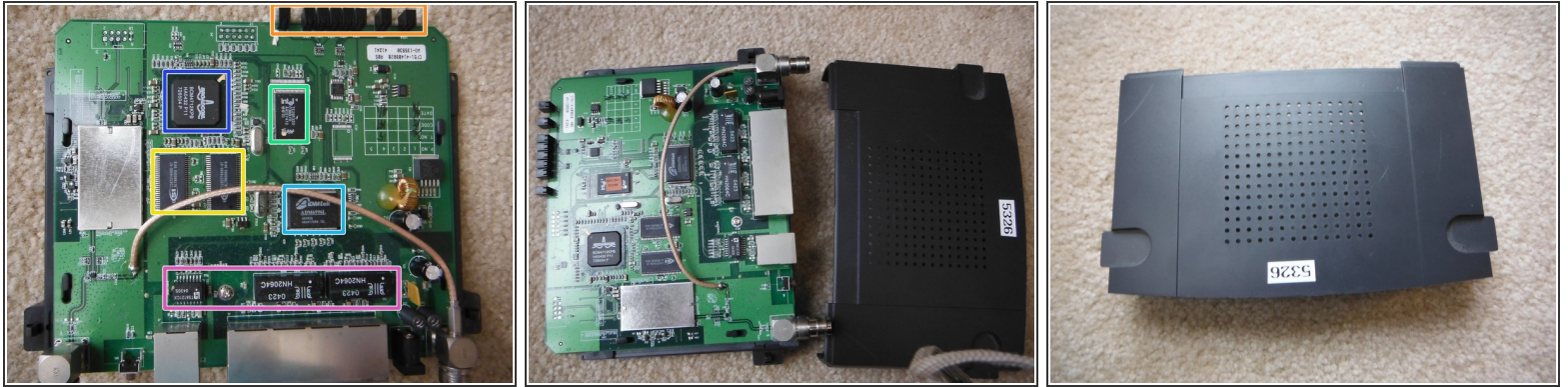
- Let's begin with the teardown! First, unscrew the antennas from the back of the router and set them aside.

Step 3 — Front Panel Removal



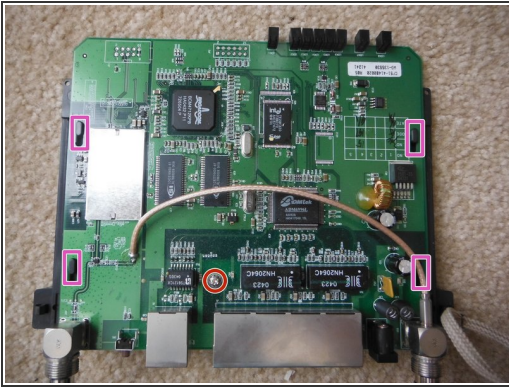
- Lets get into the internals! First, flip the unit over and insert a small flat-head screwdriver in between the warranty sticker and the front panel and gently pry it open.
 - ⚠ Beware! It may take some effort to pry the panel off. Also, be careful not to damage the motherboard, like I did.
 - ⓘ This will certainly void your warranty from 2002, in case you wanted to know.

Step 4 — Remove Top Panel



- Now, slide the top plastic panel off and put it aside you now have a clear view of the motherboard.
- Intel TE28F320 Flash Memory
- Broadcom BCM4712KPB (I think it's a modem chip)
- Admtek ADM6996L Ethernet Controller
- Activity LEDs
- Issi 42S16400-6T Random Access Memory (unsure how much)
- An assortment of other chips I couldn't find.

Step 5 — Remove Motherboard



- Time to remove the motherboard! Unscrew the single Phillips screw, slide the motherboard and then lift it out.
- Single Phillips screw
- Plastic slips holding the motherboard in place.

Step 6 — Done!



- You're done! Thanks for sticking with me for my first teardown!
- ☑ If you want to reassemble this, just do this guide in reverse order! (assuming you didn't break it like I did)