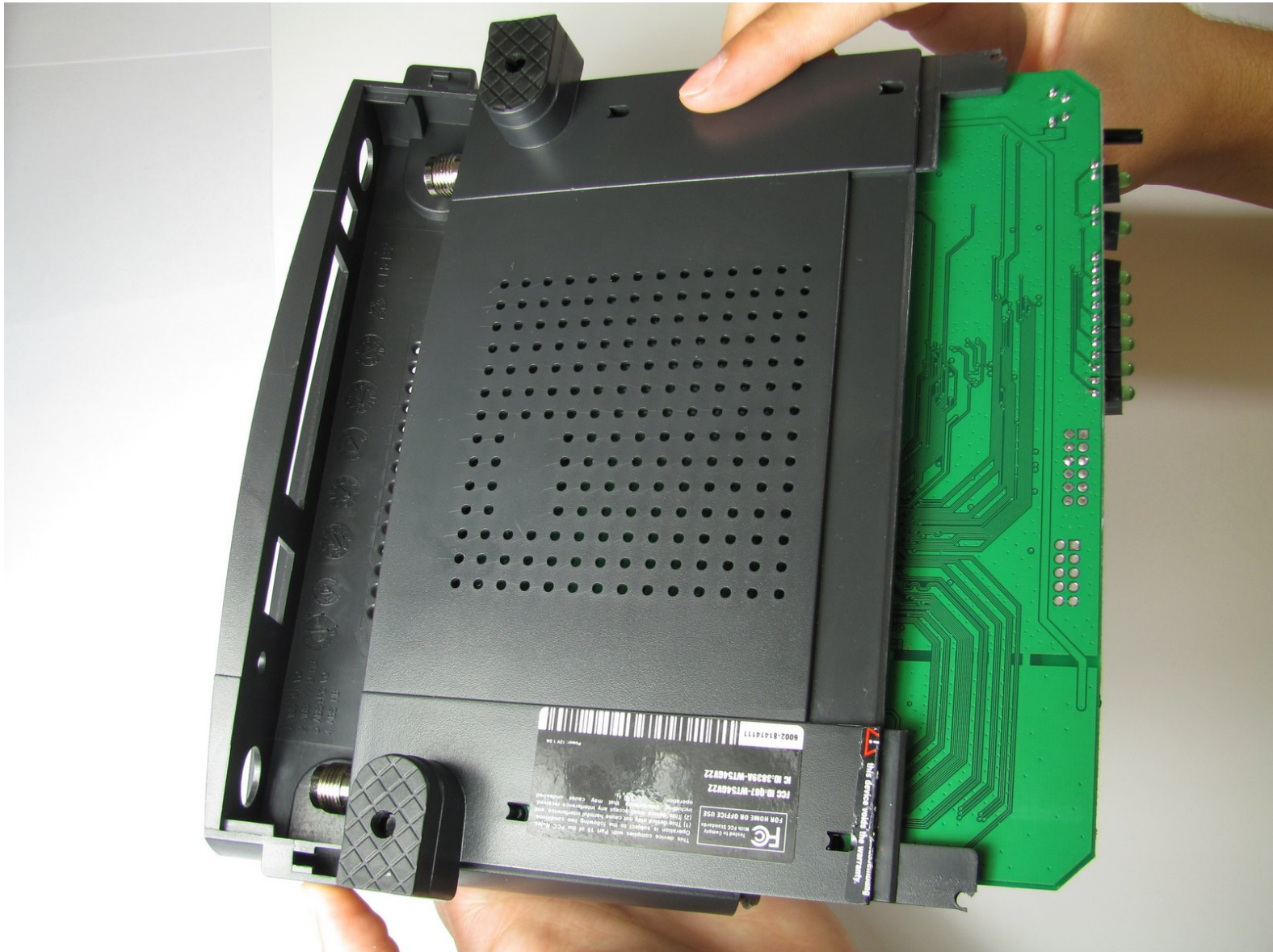




# Linksys WRT54GS v2 Motherboard Replacement

In this guide you will remove the screws holding the motherboard to the router's case.

Written By: Allian Roman



---

## INTRODUCTION

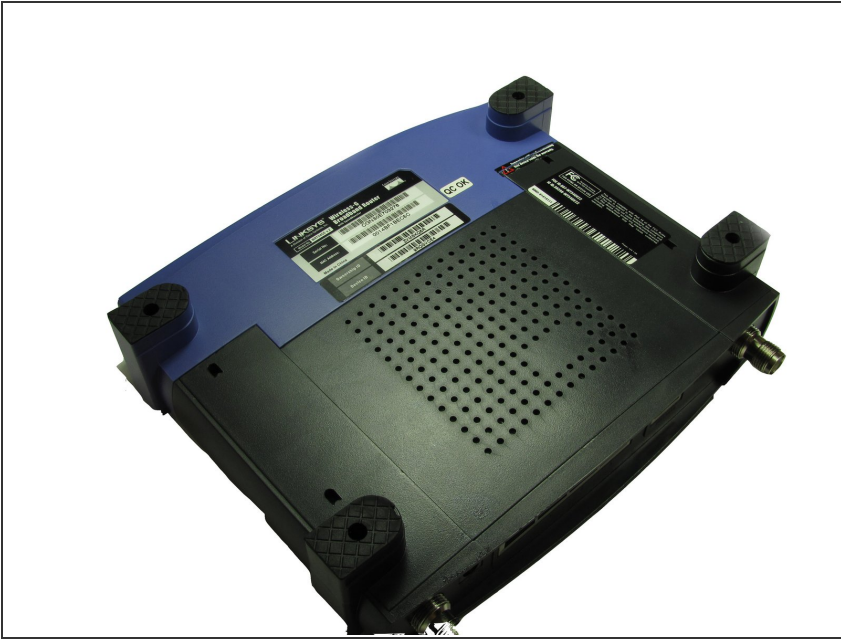
In this guide you will learn where the motherboard attaches to the router and how to separate the two components.

---

### TOOLS:

- [Metal Spudger](#) (1)
  - [Phillips #2 Screwdriver](#) (1)
  - [iFixit Opening Tools](#) (1)
-

## Step 1 — Front Case



- Turn the router over so that all four of its feet are facing upwards.

## Step 2



- Remove the rubber inserts inside the the two purple feet located on the router's front case.
- This may be a challenge, so try the following two methods:
  - Use a plastic opening tool. Insert the flat end of the tool into the seam and slowly pry the rubber feet out.
  - Use a metal spudger. Insert the point of the metal spudger directly into the hole of the rubber feet and pry the insert out.

### Step 3



- Use a Phillips #2 Screwdriver to remove the two 5.8 mm screws holding the front case to the motherboard.

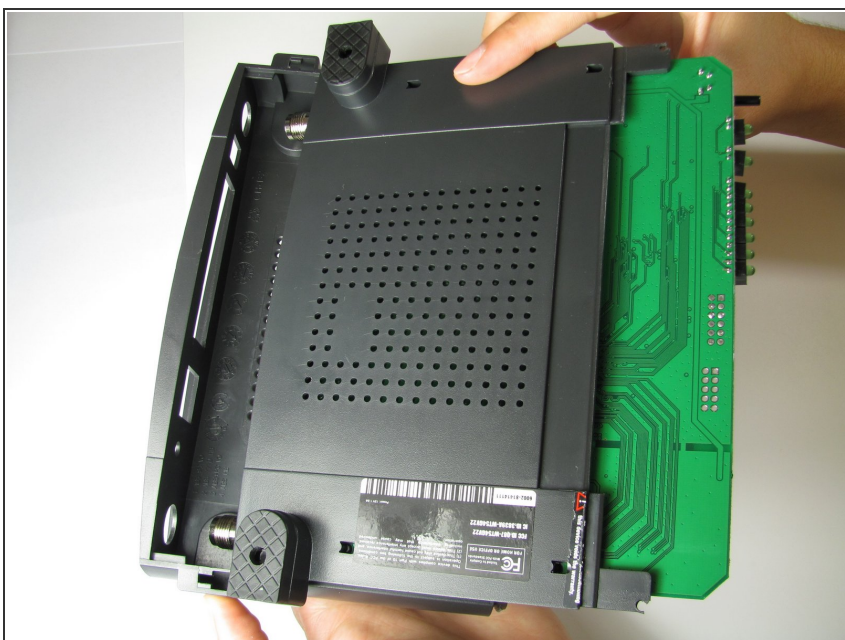


## Step 4



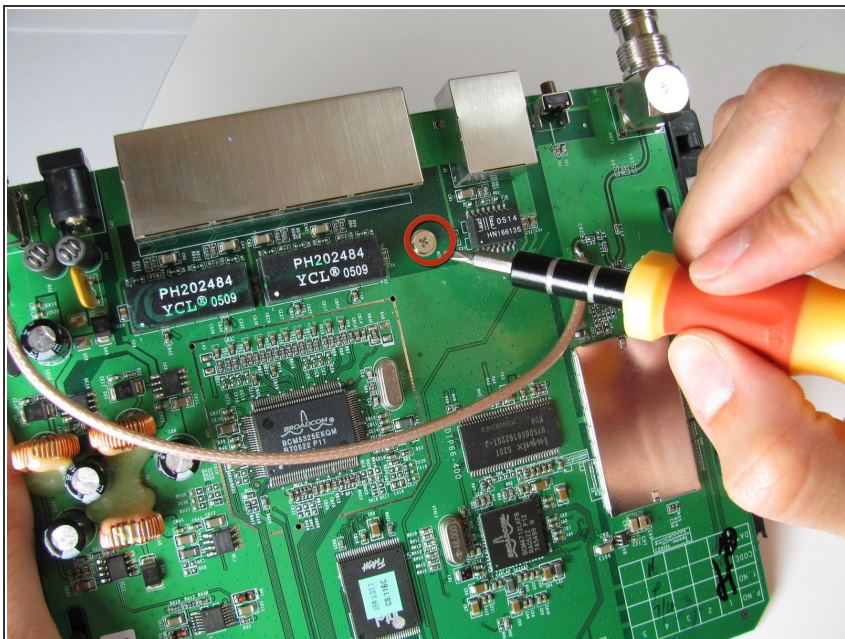
- Squeeze the sides of the router's backcase inward and pull off the purple front case. It is helpful to have a second person assist you for this step.

## Step 5 — Motherboard



- Slide the board unit out and up.

## Step 6



- Flip the circuit board over and use a Phillips #2 Screwdriver to remove the 6.9mm screw holding the board to the back case.
- Slide the back cover out and away from the circuit board.

To reassemble your device, follow these instructions in reverse order.