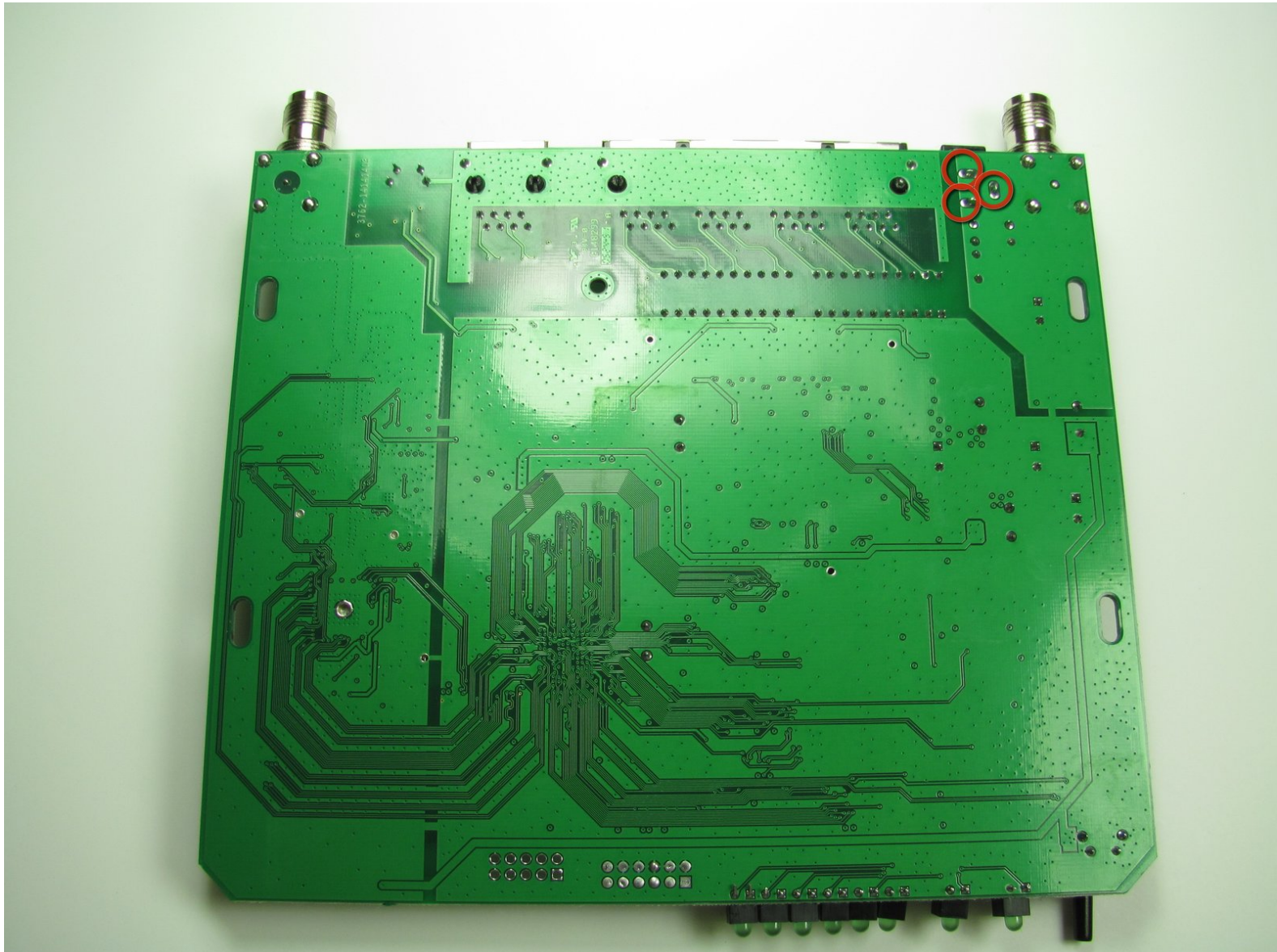




Linksys WRT54GS v2 Power Connector Replacement

This guide provides instructions on how to replace the power connector.

Written By: Alex Do



INTRODUCTION

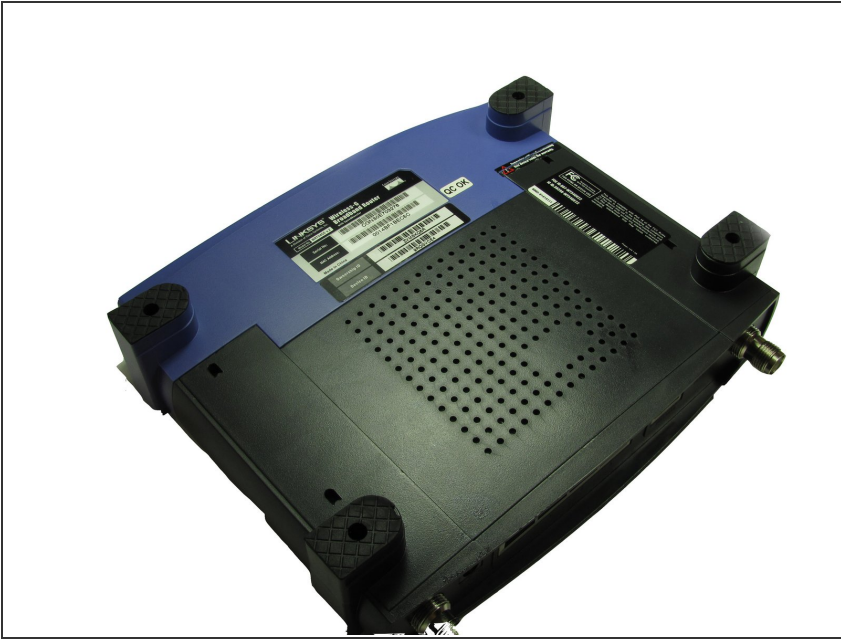
You will be desoldering and replacing the power connector.



TOOLS:

- [Desoldering Braid](#) (1)
 - [Metal Spudger](#) (1)
 - [Phillips #2 Screwdriver](#) (1)
 - [iFixit Opening Tools](#) (1)
 - [Soldering Iron](#) (1)
-

Step 1 — Front Case



- Turn the router over so that all four of its feet are facing upwards.

Step 2



- Remove the rubber inserts inside the the two purple feet located on the router's front case.
- This may be a challenge, so try the following two methods:
 - Use a plastic opening tool. Insert the flat end of the tool into the seam and slowly pry the rubber feet out.
 - Use a metal spudger. Insert the point of the metal spudger directly into the hole of the rubber feet and pry the insert out.

Step 3



- Use a Phillips #2 Screwdriver to remove the two 5.8 mm screws holding the front case to the motherboard.

Step 4



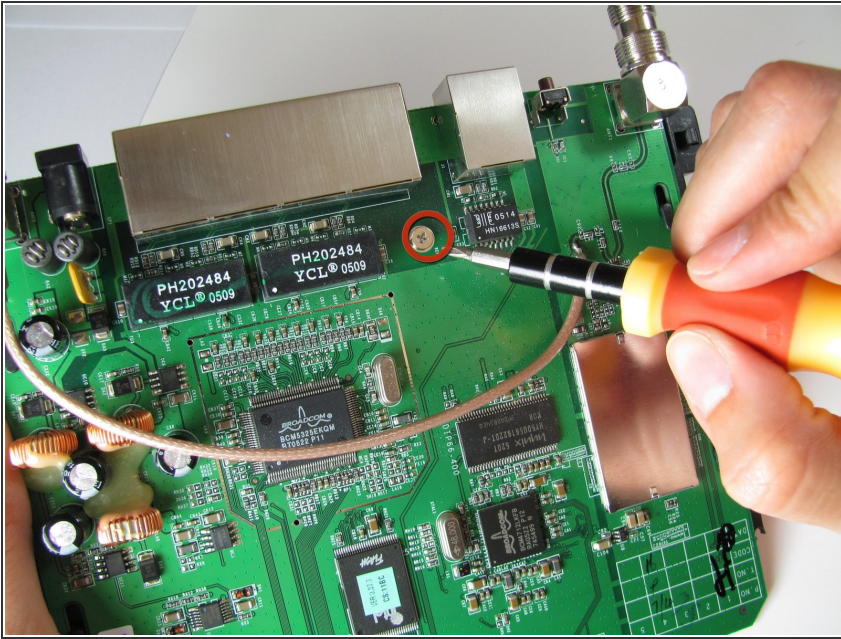
- Squeeze the sides of the router's backcase inward and pull off the purple front case. It is helpful to have a second person assist you for this step.

Step 5 — Motherboard



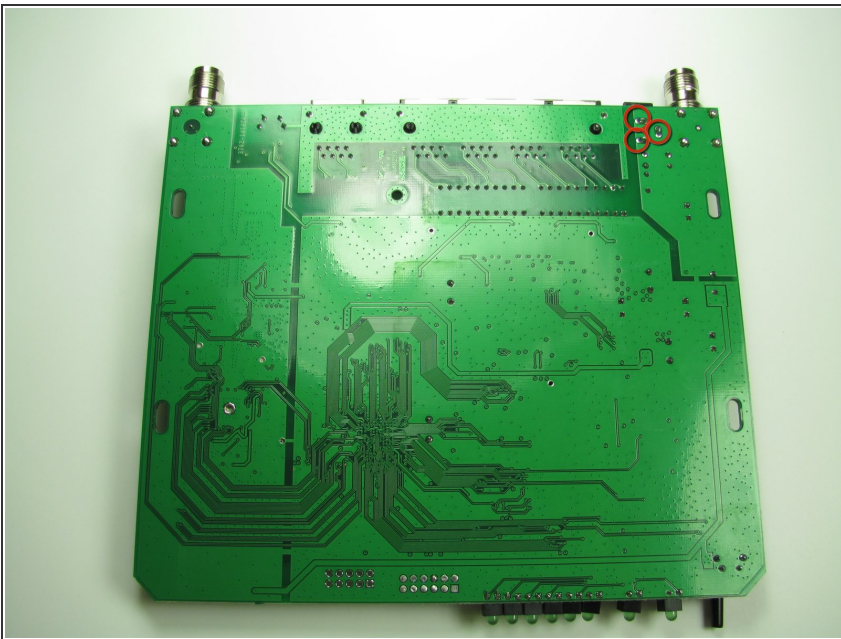
- Slide the board unit out and up.

Step 6



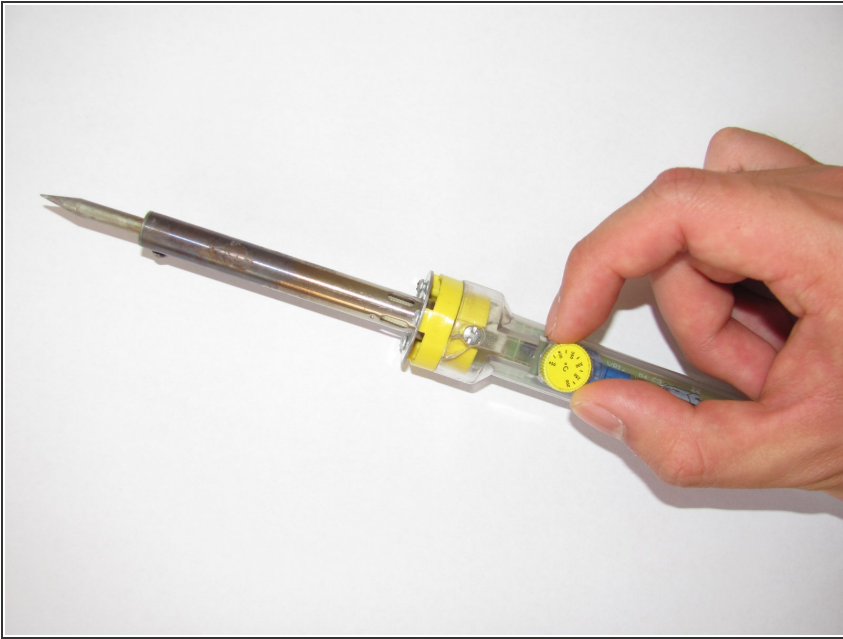
- Flip the circuit board over and use a Phillips #2 Screwdriver to remove the 6.9mm screw holding the board to the back case.
- Slide the back cover out and away from the circuit board.

Step 7 — Power Connector



- Turn the circuit board over and identify the solder connections you will desolder.
- The connections for the power connector are shown in red.

Step 8



- Desolder the connection by following iFixit's guide to repairing soldered connections: [How To Solder and Desolder Connections](#).

To reassemble your device, follow these instructions in reverse order.