



# Lite-On LightScribe SHM-165H6S Chassis Replacement

Removing the top and bottom covers of the drive.

Written By: James Biggs



---

## INTRODUCTION

Remove the top cover of the optical drive to access the internals and replace any malfunctioning components.

---



### TOOLS:

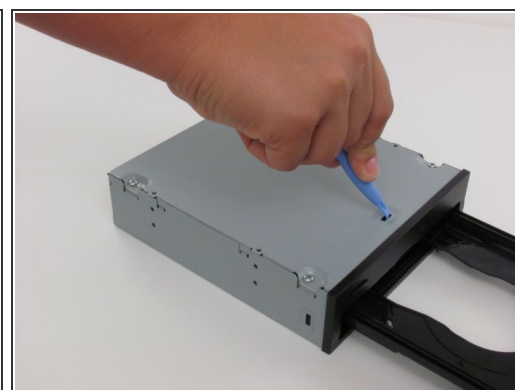
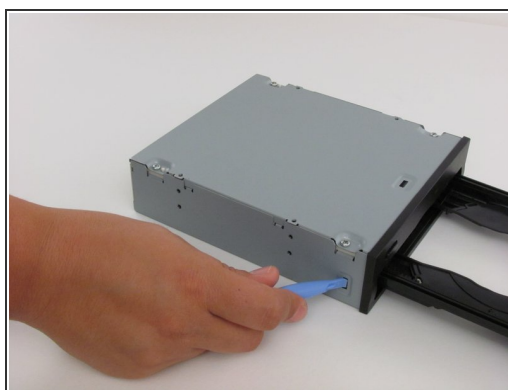
- [Paper Clip](#) (1)
  - [Phillips #2 Screwdriver](#) (1)
  - [iFixit Opening Tools](#) (1)
-

## Step 1 — Chassis



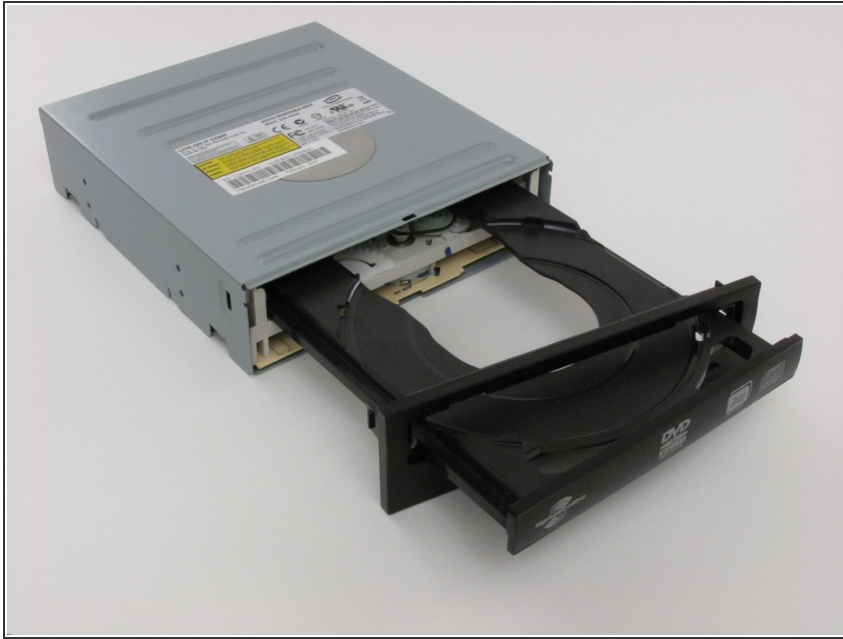
- Insert an open paper clip into the small hole on the left side of the faceplate.
- After the tray opens, extend it fully.

## Step 2



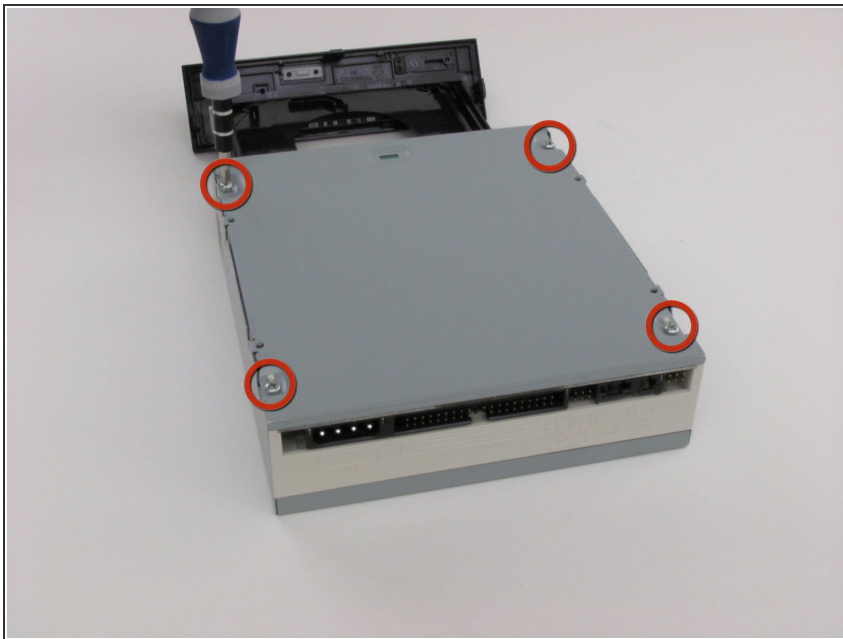
- Use an opening device to push in the black tabs on the left, right and bottom of the outer chassis to unhook the faceplate.

### Step 3



- Pull the faceplate away from the main chassis.

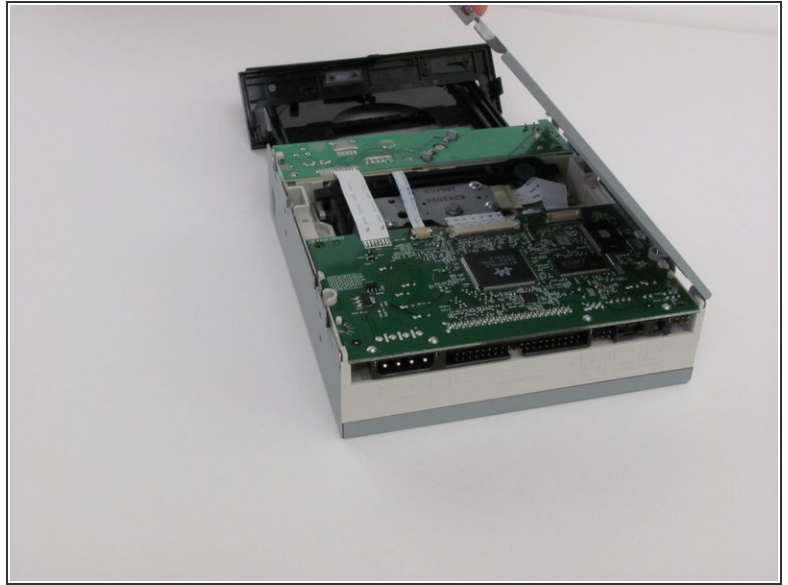
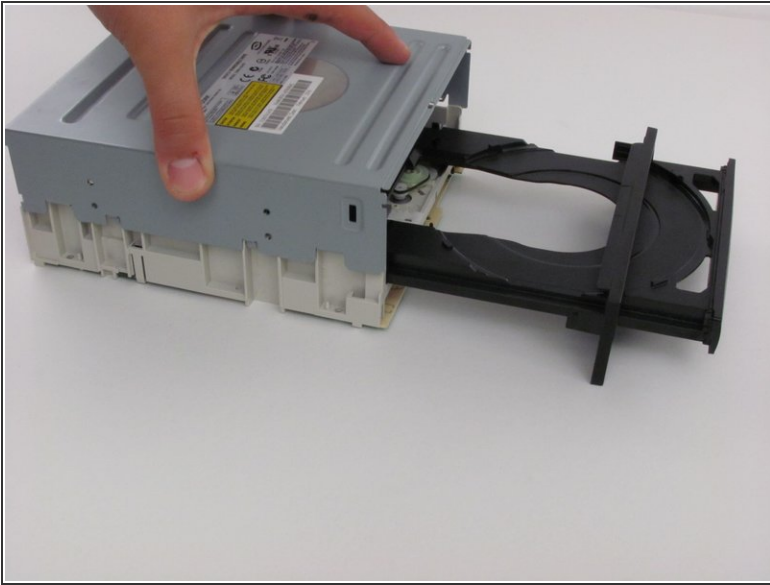
### Step 4



- Unscrew the four 8.5 mm screws on the bottom chassis using a Philips #2 screwdriver.



## Step 5



- Lift the top and bottom chassis straight up in order to remove them.

To reassemble your device, follow these instructions in reverse order.