



Lite-On iHAS324 Chassis Replacement

This guide will show how to replace the chassis of a Lite-On iHAS324 device. Reasons to replace the chassis include: there is a crack in the chassis or the owner wishes to perform a chassis modification.

Written By: Kayla Culpepper

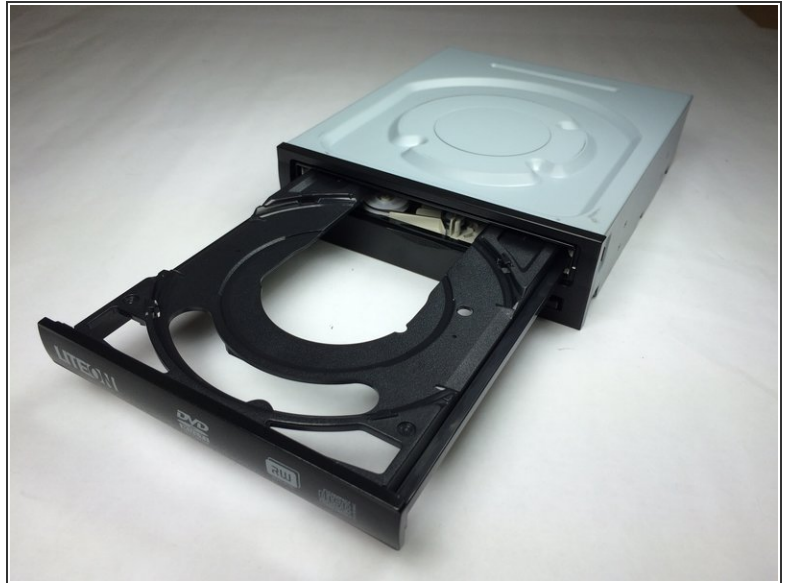




TOOLS:

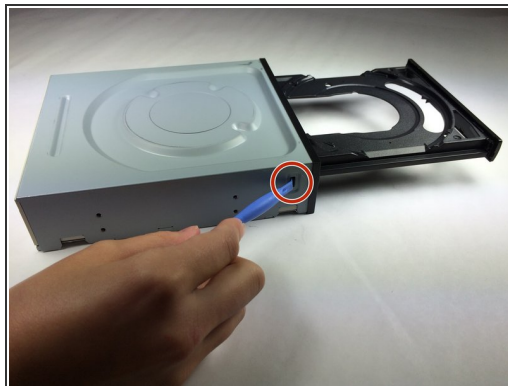
- [Phillips #2 Screwdriver](#) (1)
- [Paper Clip](#) (1)
- [iFixit Opening Tools](#) (1)

Step 1 — Chassis



- Insert a paper clip into a small hole on the right side of the faceplate below the disc tray.
 - ⓘ There may be resistance, do not be afraid to use force.
- The tray should then pop open.
- Pull out the tray so that it is fully extended.

Step 2



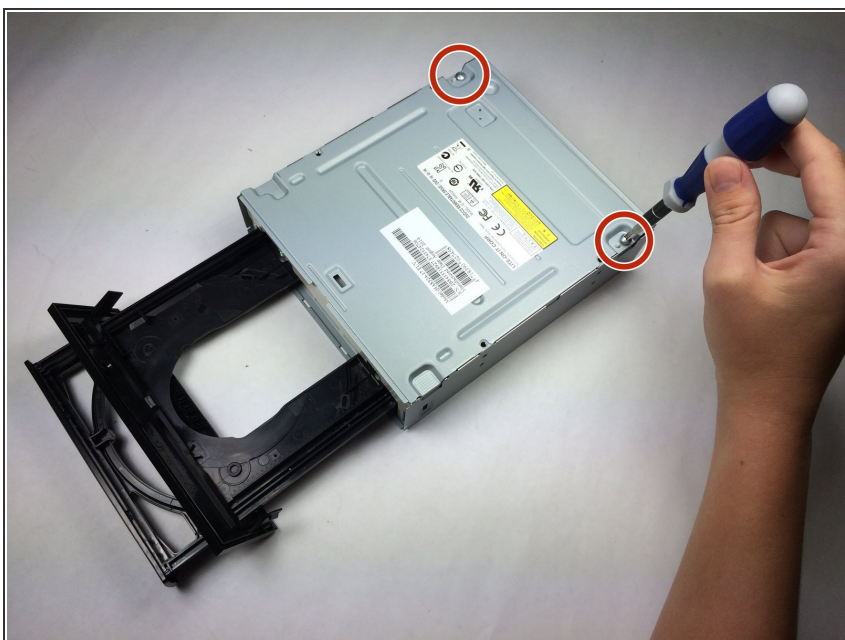
- Use a plastic opening tool to push the three tabs located on the right, left, and bottom side of the outer chassis to loosen the faceplate off.

Step 3



- Pull the faceplate off the chassis.
- ⚠ Do NOT pull the faceplate all the way off the disc tray, because doing so can cause damage to the faceplate.
- ⓘ There may be resistance, do not be afraid to use force.

Step 4



- Using the Phillips Head #2 screwdriver, unscrew the two 8.5 mm screws located on the bottom back of the chassis.

Step 5



- Remove the bottom plate by lifting it off the device.

Step 6



- Turn the device over.
- Remove the top plate by pulling the sides and lifting the plate off.

To reassemble your device, follow these instructions in reverse order.