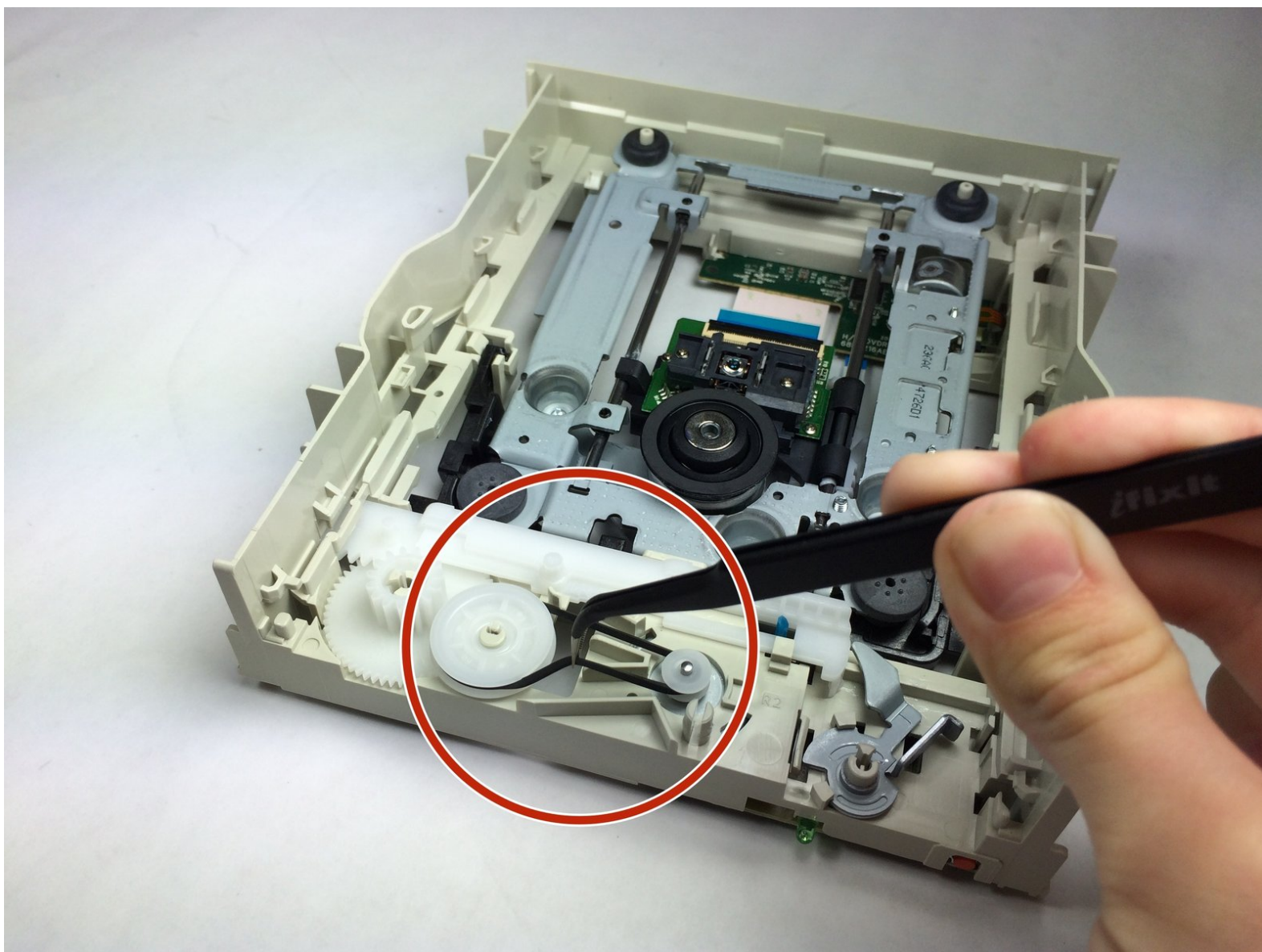




# Lite-On iHAS324 Disc Tray Belt Replacement

This guide will show how to replace the disc tray belt of a Lite-On iHAS324 device. Reasons to replace the disc tray belt include: the disc tray belt has snapped or torn or the belt has come loose.

Written By: Kayla Culpepper

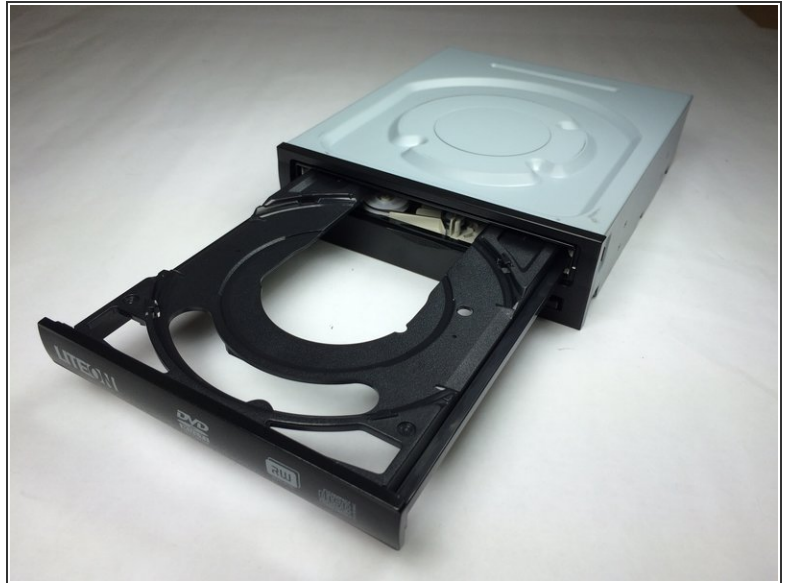




## TOOLS:

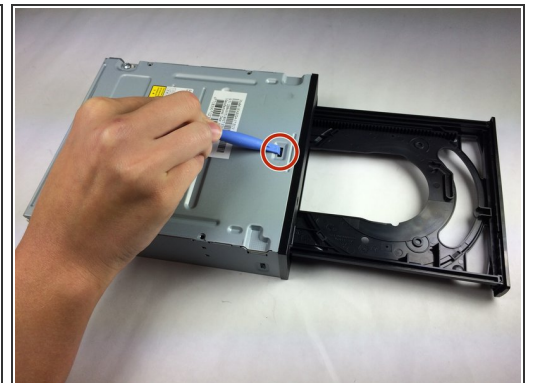
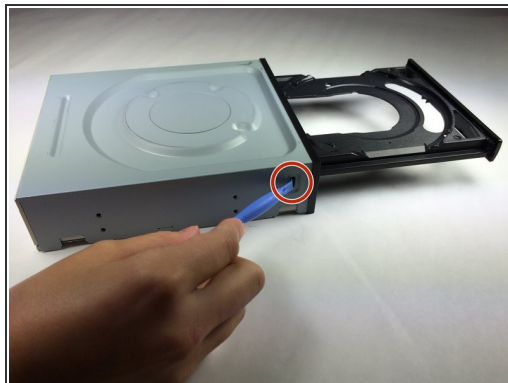
- [Paper Clip](#) (1)
  - [Phillips #2 Screwdriver](#) (1)
  - [iFixit Opening Tools](#) (1)
  - [Tweezers](#) (1)
-

## Step 1 — Chassis



- Insert a paper clip into a small hole on the right side of the faceplate below the disc tray.
  - ⓘ There may be resistance, do not be afraid to use force.
- The tray should then pop open.
- Pull out the tray so that it is fully extended.

## Step 2



- Use a plastic opening tool to push the three tabs located on the right, left, and bottom side of the outer chassis to loosen the faceplate off.

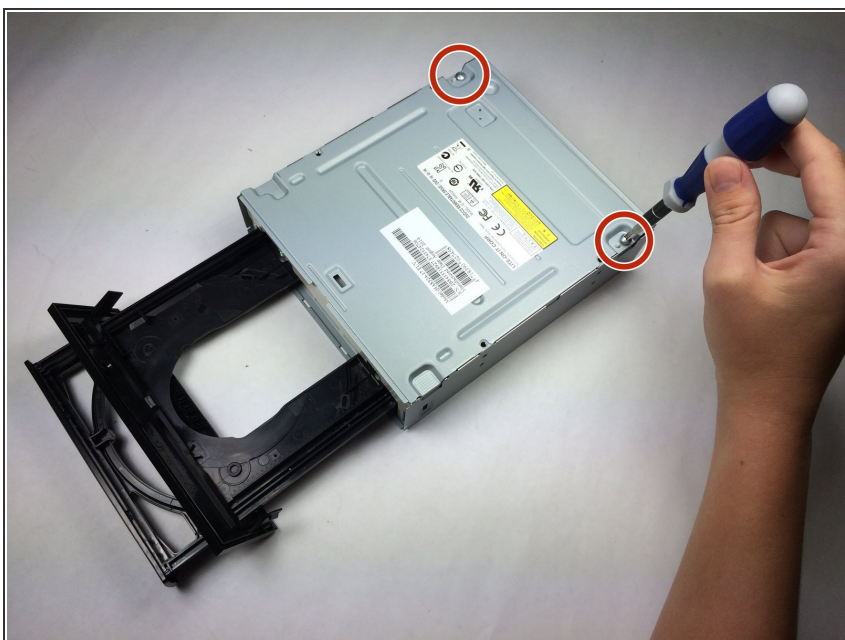


## Step 3



- Pull the faceplate off the chassis.
- ⚠ Do NOT pull the faceplate all the way off the disc tray, because doing so can cause damage to the faceplate.
- ⓘ There may be resistance, do not be afraid to use force.

## Step 4



- Using the Phillips Head #2 screwdriver, unscrew the two 8.5 mm screws located on the bottom back of the chassis.

## Step 5



- Remove the bottom plate by lifting it off the device.

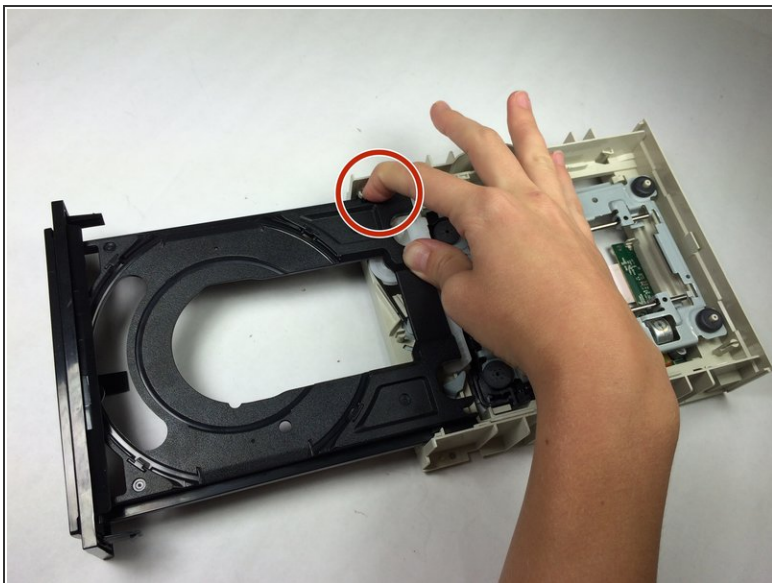
## Step 6



- Turn the device over.
- Remove the top plate by pulling the sides and lifting the plate off.

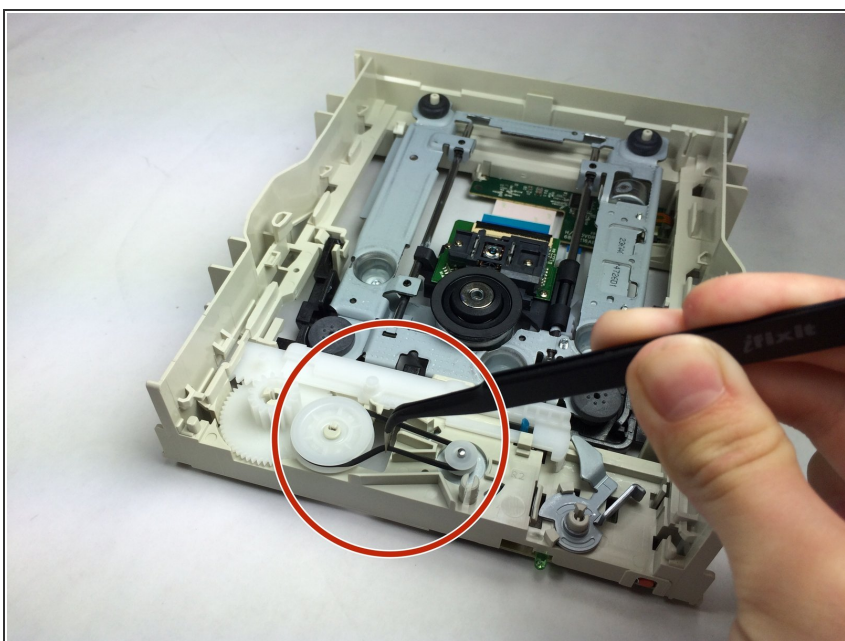


## Step 7 — Disc Tray



- Push the left tab in and slide the tray out on the left side.
- Pull the gray plastic casing on the right side away from the tray.
- Slide the right side of the tray out.

## Step 8 — Disc Tray Belt



- Take tweezers and remove the black tray belt from the gears carefully.

To reassemble your device, follow these instructions in reverse order.