



Logitech 2-MP Webcam C600 Teardown

Written By: I Heart Robotics



INTRODUCTION

This is a step by step teardown of a Logitech webcam which is helpful if you are trying to [build a stereo camera and remove the infrared filter](#) or even simply adjust the focus.



TOOLS:

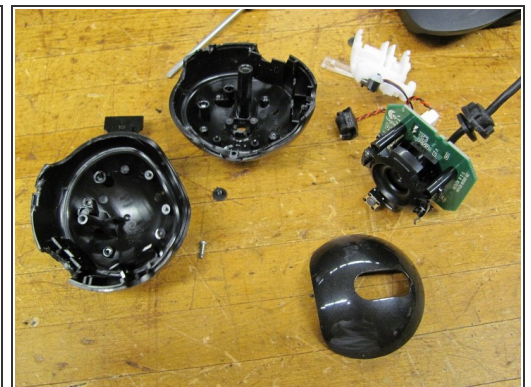
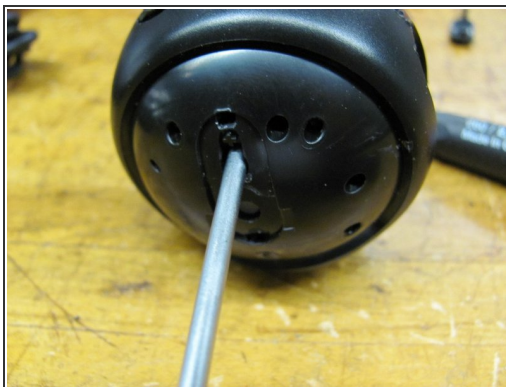
- [Flathead Screwdriver](#) (1)
 - [Phillips #0 Screwdriver](#) (1)
-

Step 1 — Teardown



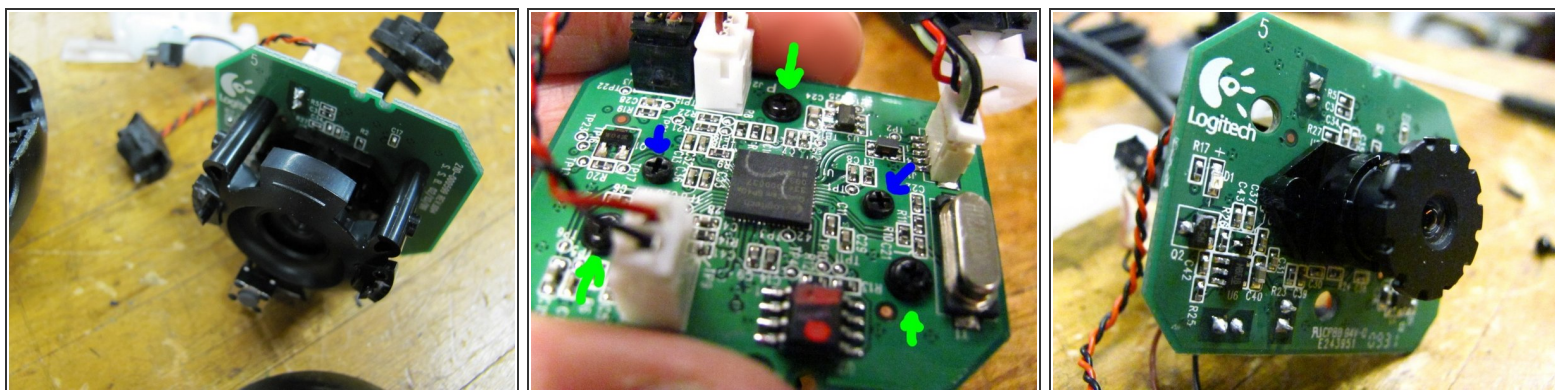
- Buy a [Logitech 2-MP Webcam C600, model number: 960-000395](#)
- Remove Camera from the box
- Pull to remove the base

Step 2



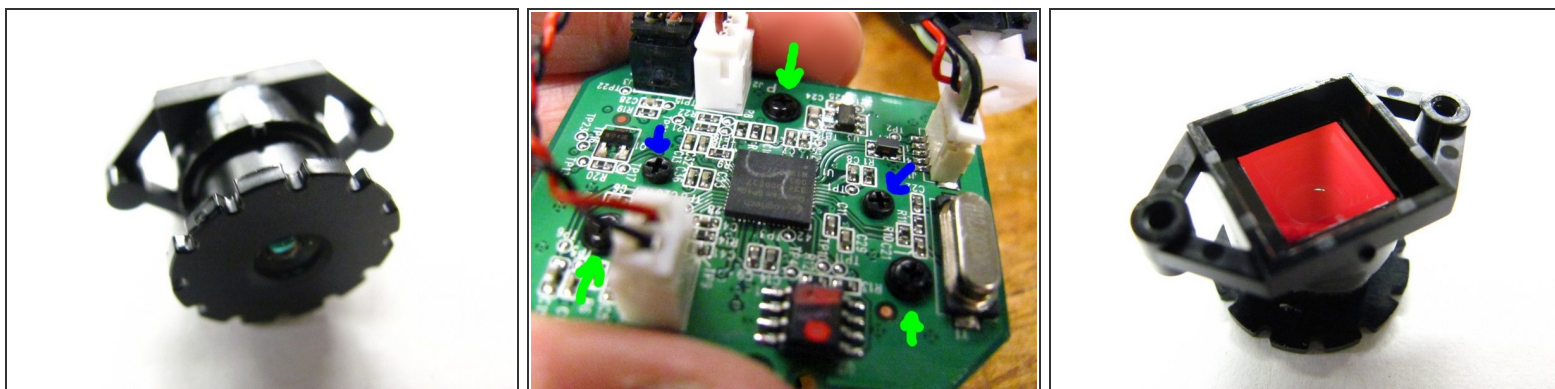
- Pry off the button mounted on the side
- Green arrow indicates the location of screw hole
- Use a #0 Phillips head screwdriver to remove the screw

Step 3



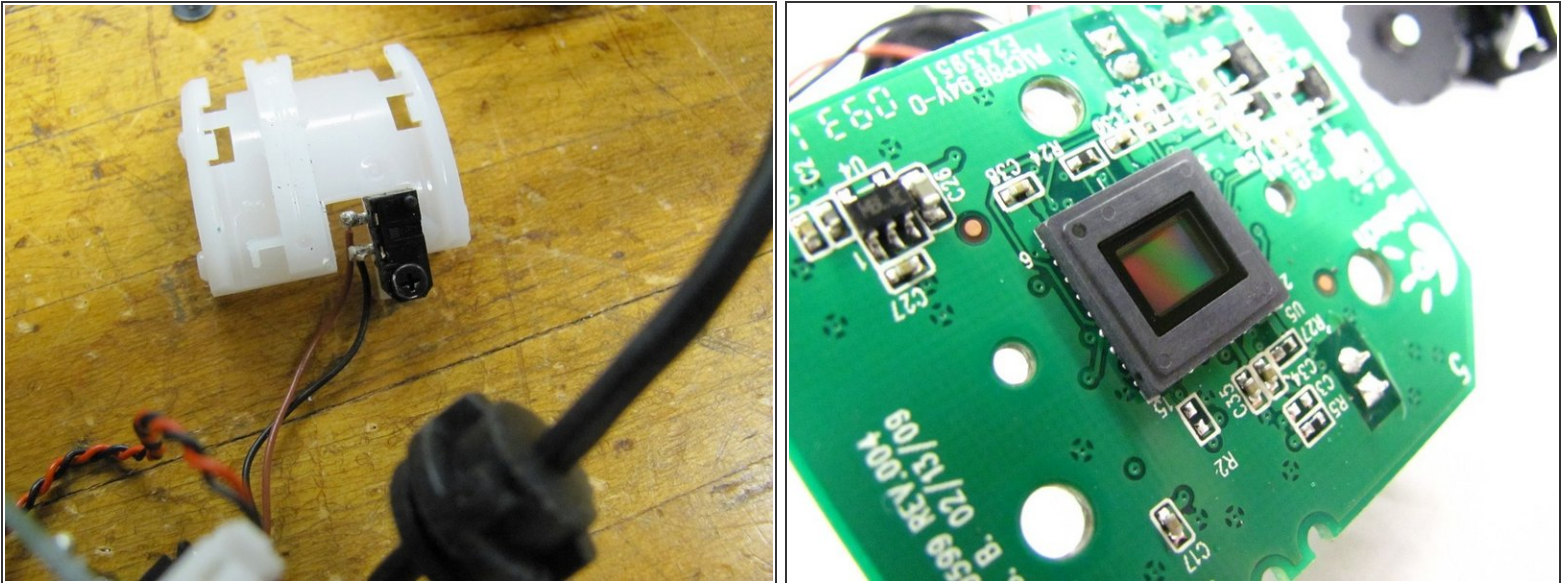
- Remove the screw indicated by the green arrows
- The lens can be screwed and unscrewed to adjust focus. However it is glued in place and should be reglued after adjustment

Step 4



- The screws indicated by the blue arrows hold the lens module in place
- The infrared filter is accessible from the back of the lens module. It is the shiny piece of reddish glass.

Step 5



- Attached to the white plastic is the privacy shade position sensor.
- The [ccd sensor](#) appears to be 1/3.2" Type sensor with 4:3 aspect ratio. With is 4.536mm x 3.416mm. Focal length is currently undetermined.
- The lens is threaded M10x0.5, and testing seems to indicate that the sensor is a CCD with global shutter.