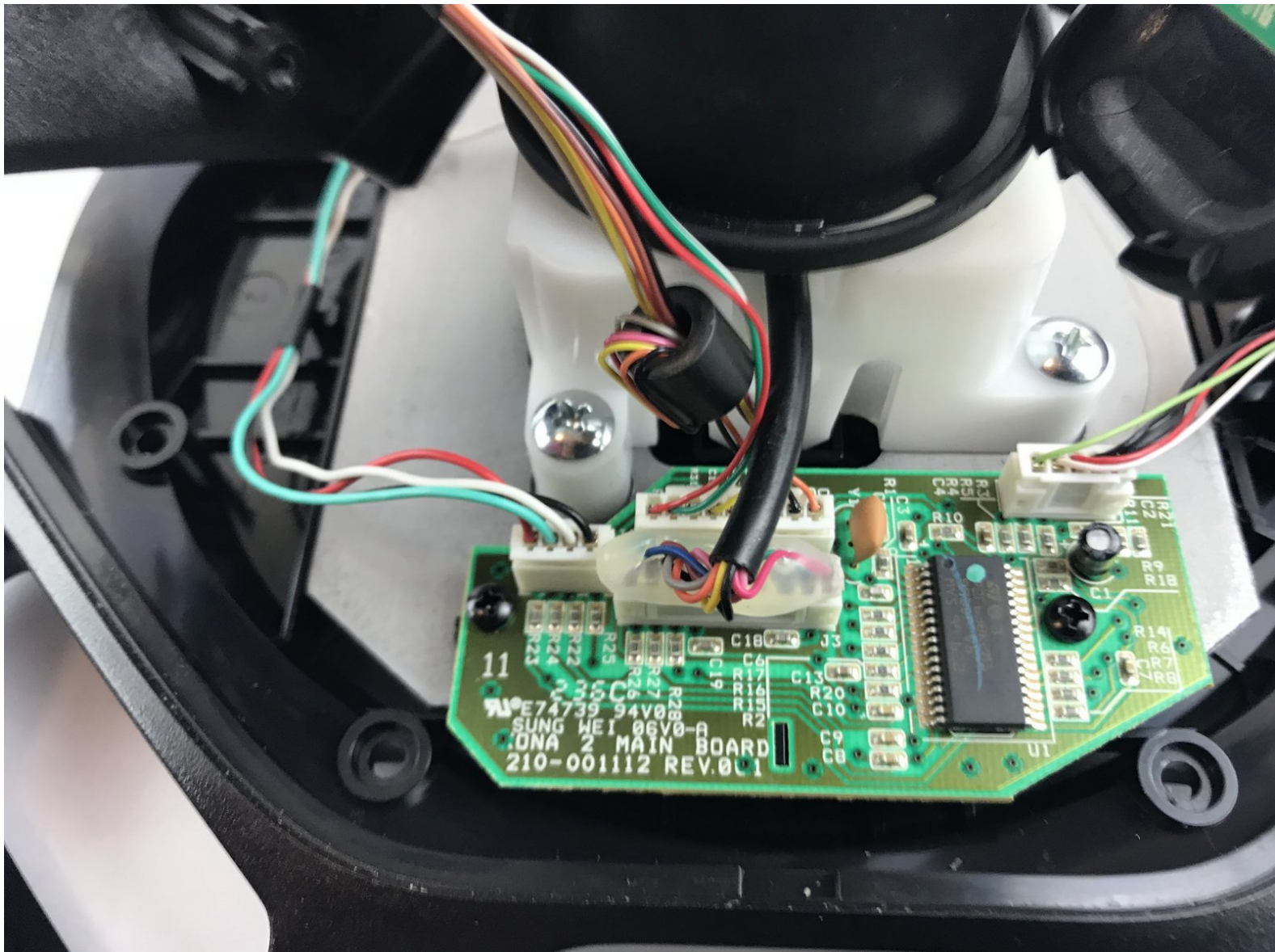




Logitech Extreme 3D Pro Main Joystick Spring Replacement

This guide will assist you in replacing the main joystick spring on a Logitech Extreme 3D Pro.

Written By: Emanuel Canela



INTRODUCTION

When moving the joystick, the main spring bends. The spring also keeps the joystick upright. After time, the spring can cause the joystick to sag when not in use. In this situation, replacing the spring will be necessary.



TOOLS:

- [Phillips #1 Screwdriver](#) (1)
-

Step 1 — Disassembly of the handle



- Remove these three Phillips #1 screws:
 - Two 10mm screws.
 - One 7mm screw.

Step 2



- Using your fingers, lower the rubber boot to reveal two screws underneath the joystick.
- Remove the two 10mm Phillips #1 screws.

Step 3



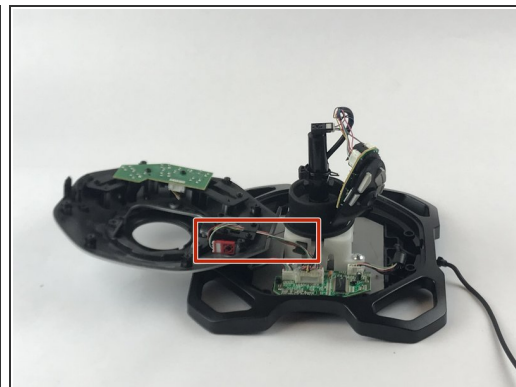
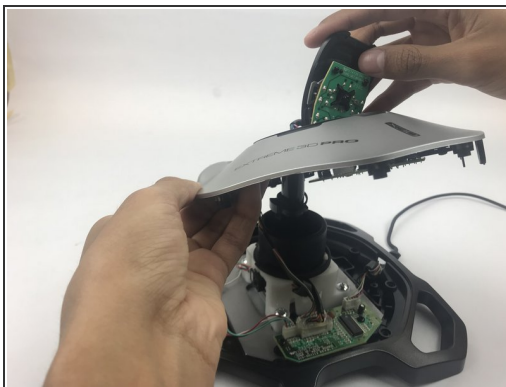
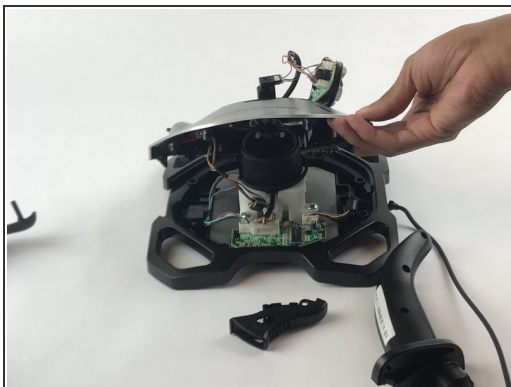
- Pull apart the joystick chassis by hand.
- Release this clip located underneath the hand rest
- ⓘ The circuit board will be loose and may fall down.

Step 4 — Disassembly of the base



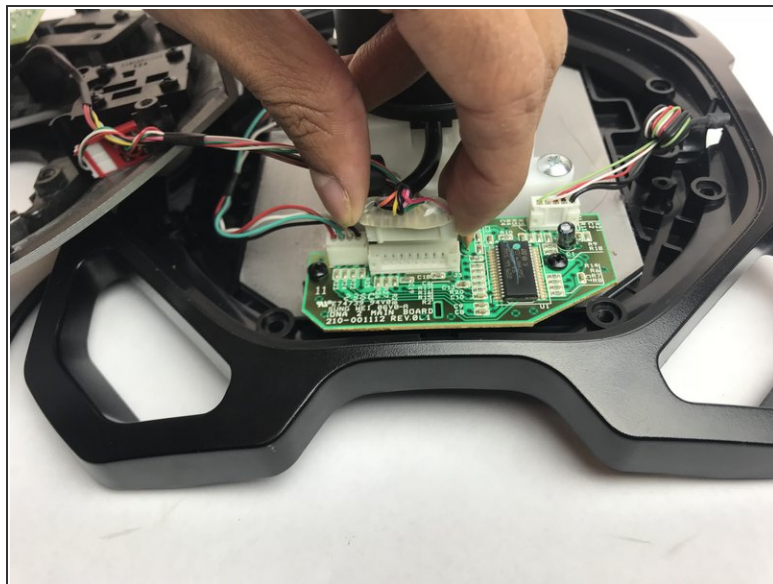
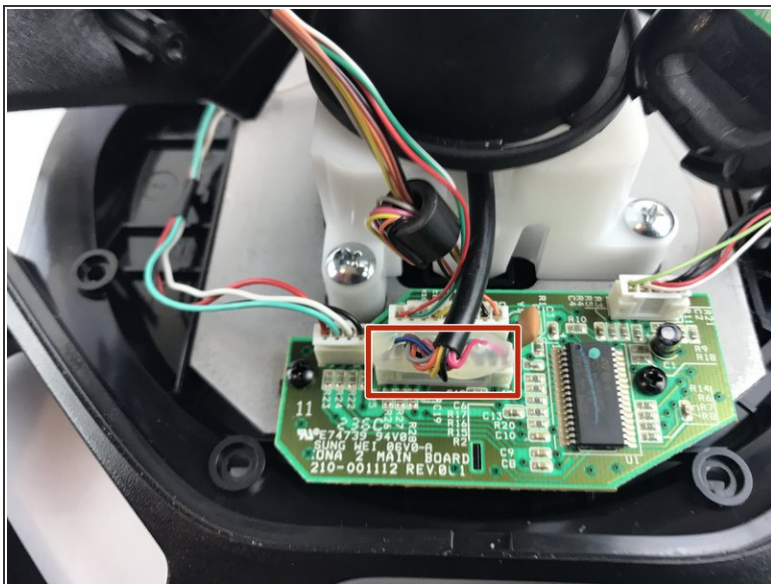
- Remove the eight 10mm Phillips #1 screws from the bottom.

Step 5



- Flip the joystick upright.
 - Lift up the silver base cover and feed the loose circuit board through.
- ⚠ Careful with the wires still attached to the silver base cover from the bottom of the joystick.

Step 6 — Main Joystick Spring



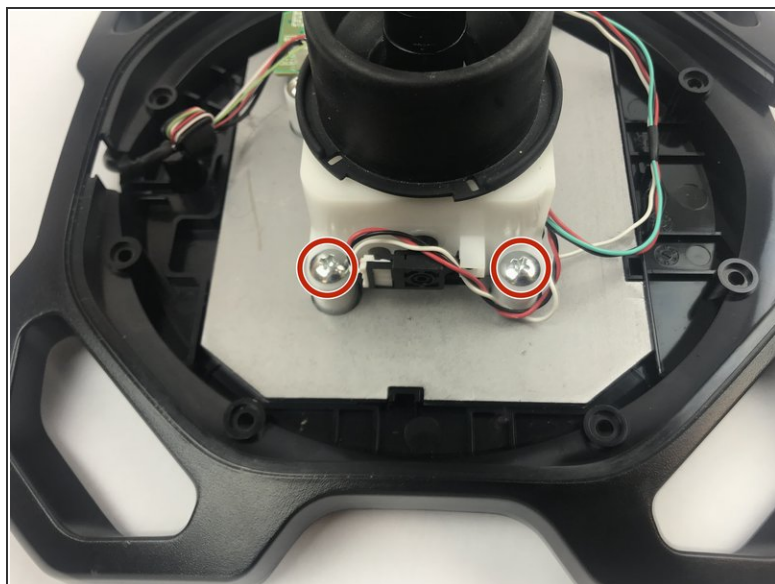
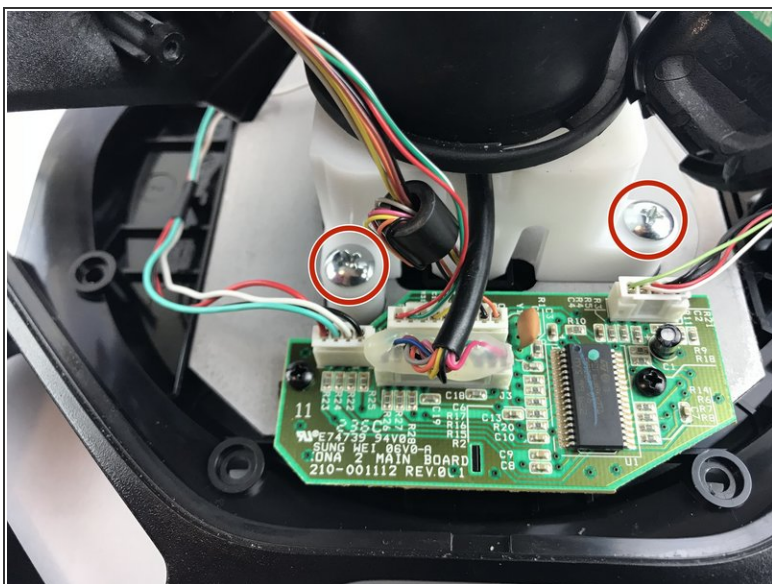
- Disconnect the wire from the motherboard.

Step 7



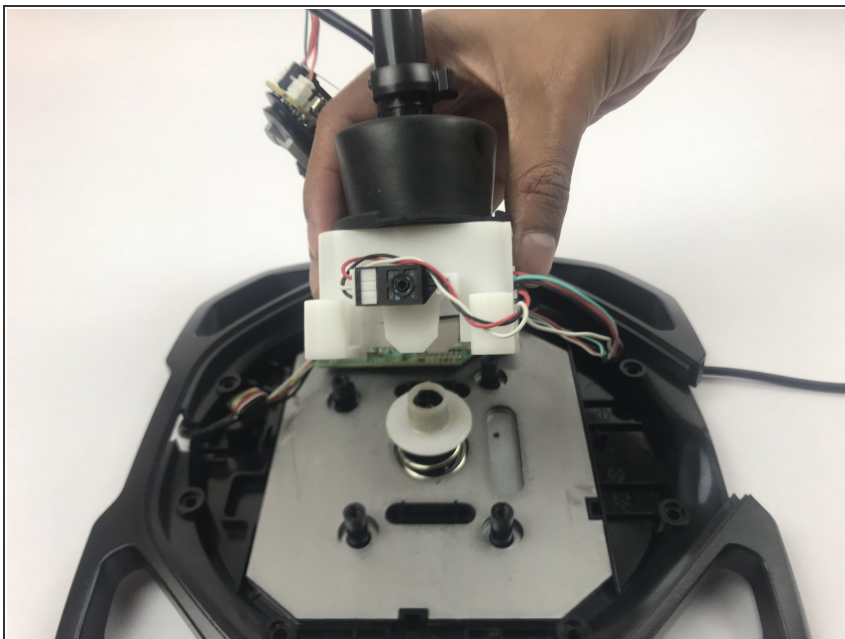
- Remove this plug from the motherboard.

Step 8



- Remove the four 10mm Phillips #1 screws from the joystick base.

Step 9



- Remove the joystick assembly.

Step 10



- Remove the white plastic piece on top of the spring.
- ⓘ The white plastic will be covered in a lubricant.

Step 11



- Remove the Spring
- ⓘ The spring will be covered in lubricant.

To reassemble your device, follow these instructions in reverse order.