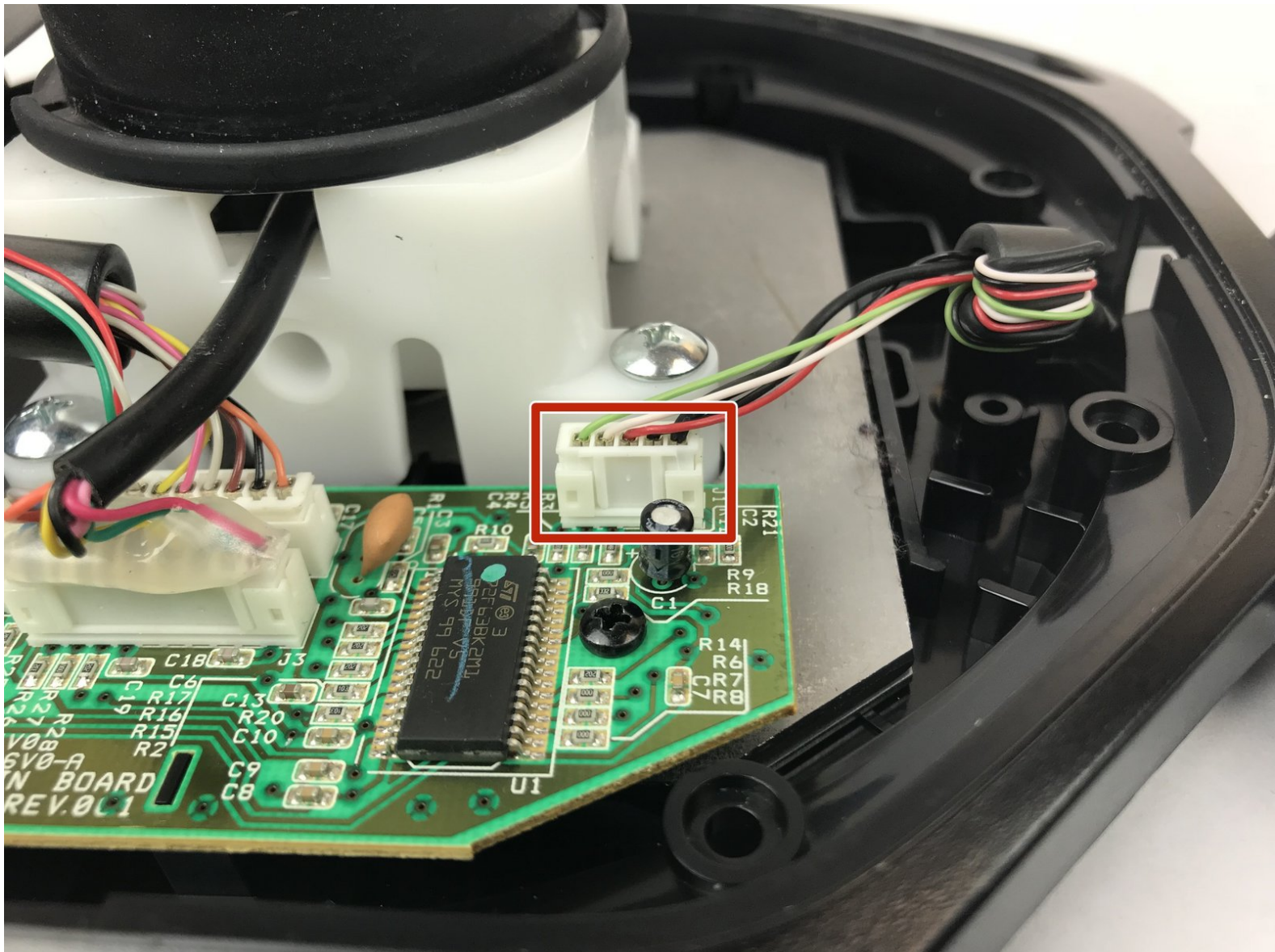




# Logitech Extreme 3D Pro USB Cable Replacement

This guide will walk you through replacing the USB cable on a Logitech Extreme 3D Pro joystick.

Written By: Emanuel Canela



---

## INTRODUCTION

After extended use, the USB cable may have become frayed or broken completely. This will require you to change the cable to continue using the joystick.

---



### TOOLS:

- [Phillips #1 Screwdriver](#) (1)
-

## Step 1 — Disassembly of the handle



- Remove these three Phillips #1 screws:
  - Two 10mm screws.
  - One 7mm screw.

## Step 2



- Using your fingers, lower the rubber boot to reveal two screws underneath the joystick.
- Remove the two 10mm Phillips #1 screws.



### Step 3



- Pull apart the joystick chassis by hand.
- Release this clip located underneath the hand rest
- i* The circuit board will be loose and may fall down.

### Step 4 — Disassembly of the base



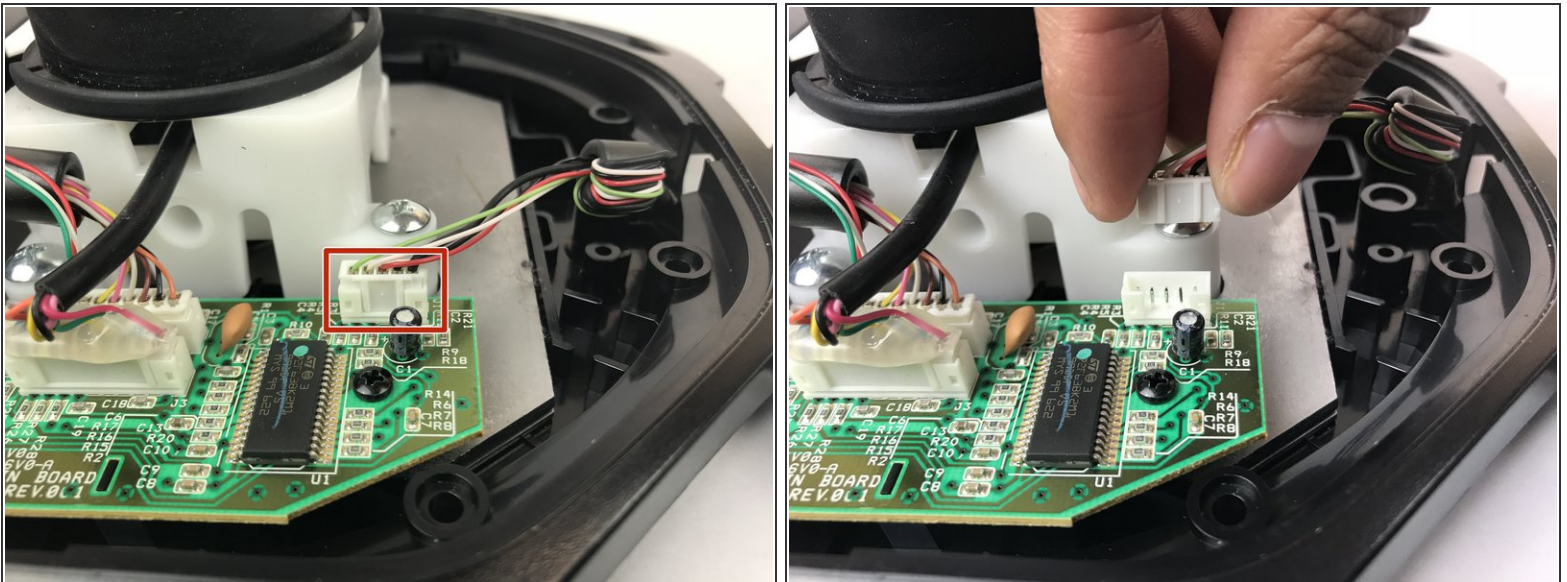
- Remove the eight 10mm Phillips #1 screws from the bottom.

## Step 5



- Flip the joystick upright.
  - Lift up the silver base cover and feed the loose circuit board through.
- ⚠ Careful with the wires still attached to the silver base cover from the bottom of the joystick.

## Step 6 — USB Cable



- Carefully pull from the plug head straight up.
- i** It may require some force to remove the cable. However be careful not to damage the wires.

To reassemble your device, follow these instructions in reverse order.

This document was generated on 2019-09-22 07:41:02 AM (MST).

