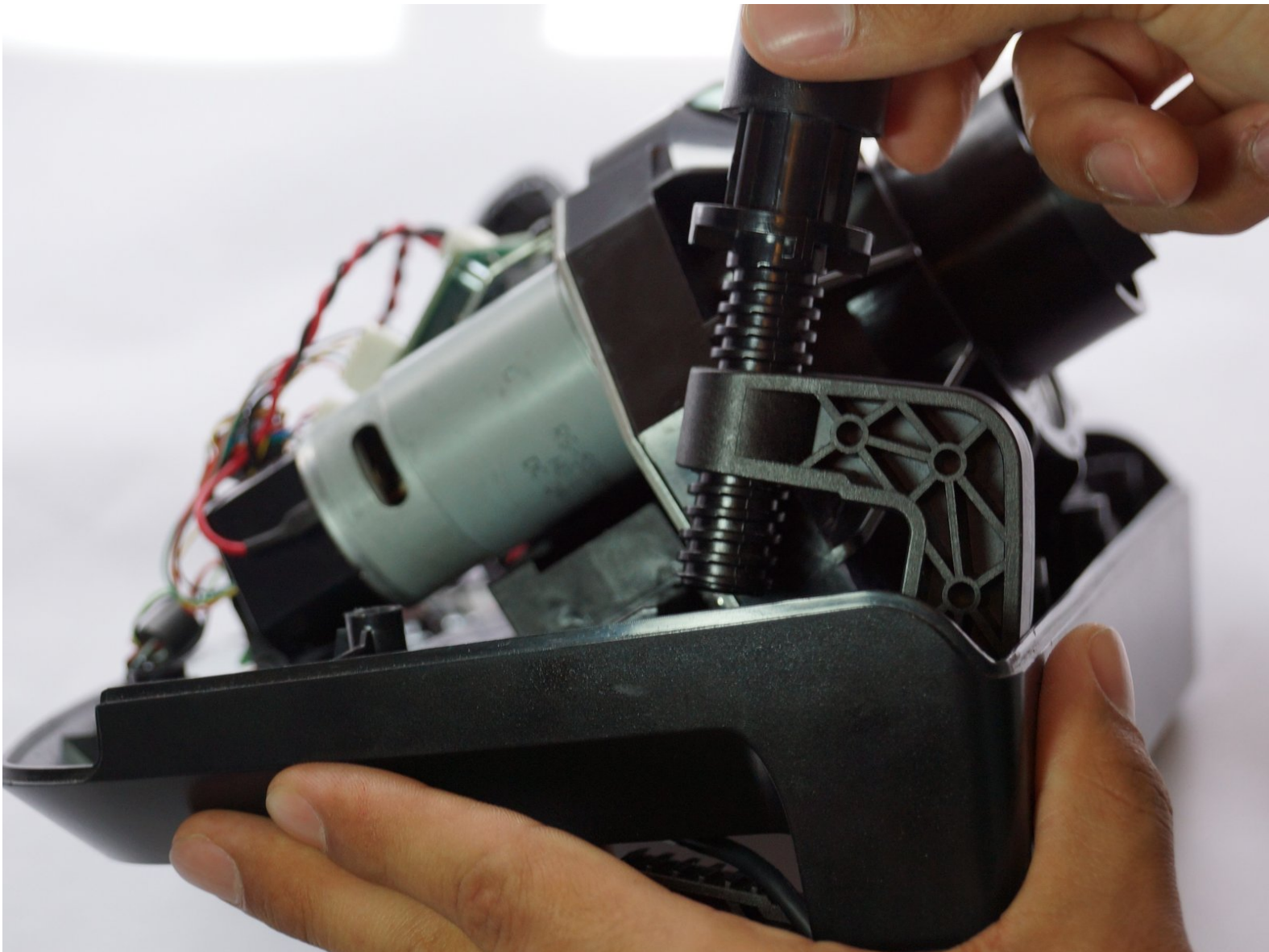




Logitech G27 C-Clamp Replacement

This guide delineates the steps to replace the Logitech G27's C-Clamps.

Written By: Daniel Louis



INTRODUCTION

If the C-Clamps on your Logitech G27 break, you will need to replace them before using the steering wheel again. This is a little bit of a pain to do, because the C-Clamps are fully inside the device case. To replace them, you will just need to remove a few screws.



TOOLS:

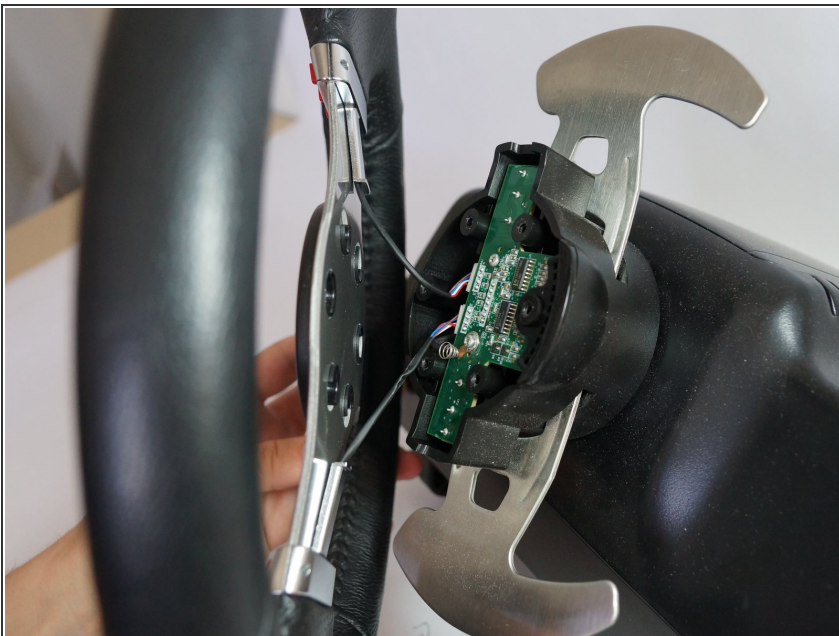
- [4mm Allen Wrench](#) (1)
 - [Phillips #1 Screwdriver](#) (1)
 - [iFixit Opening Tools](#) (1)
-

Step 1 — Steering Wheel



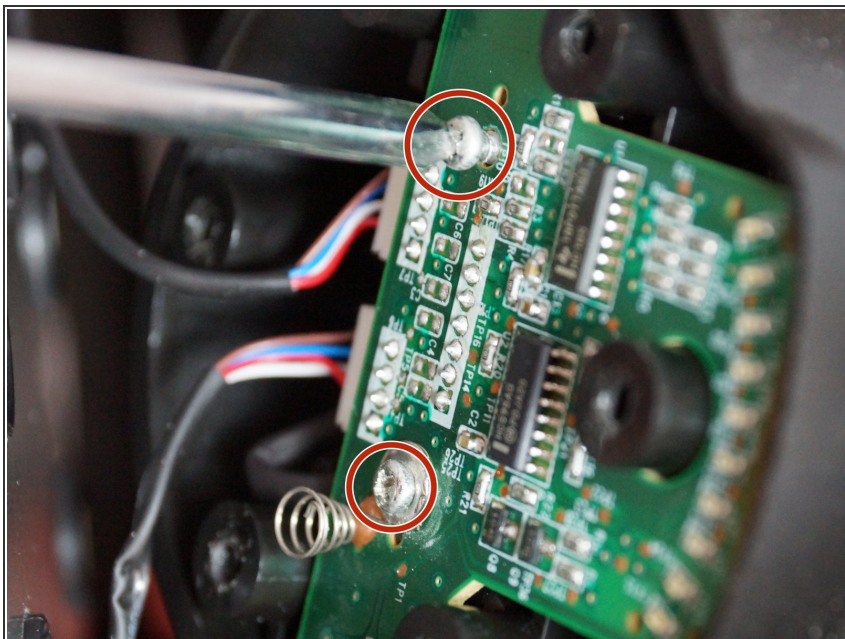
- Remove the six gray 25mm hex screws with a 4mm allen wrench.
- ⚠ Watch out when you lift the wheel up, as there are fragile wires connected to the bottom side.
- Carefully lift up the wheel, but do not disconnect it from the rest of the device.

Step 2



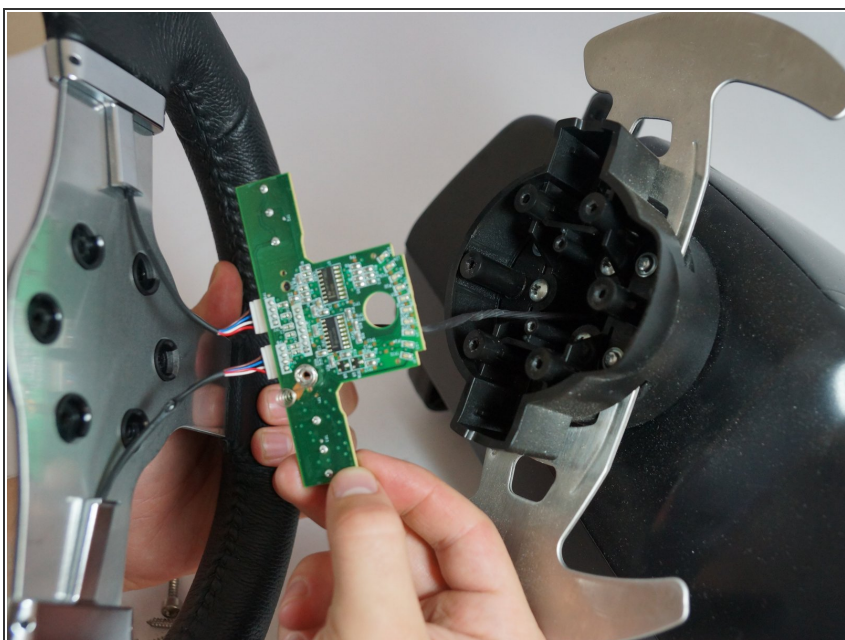
- Carefully lift the wheel off of the hub, exposing the 2 shifter paddle wires and PCB board.

Step 3



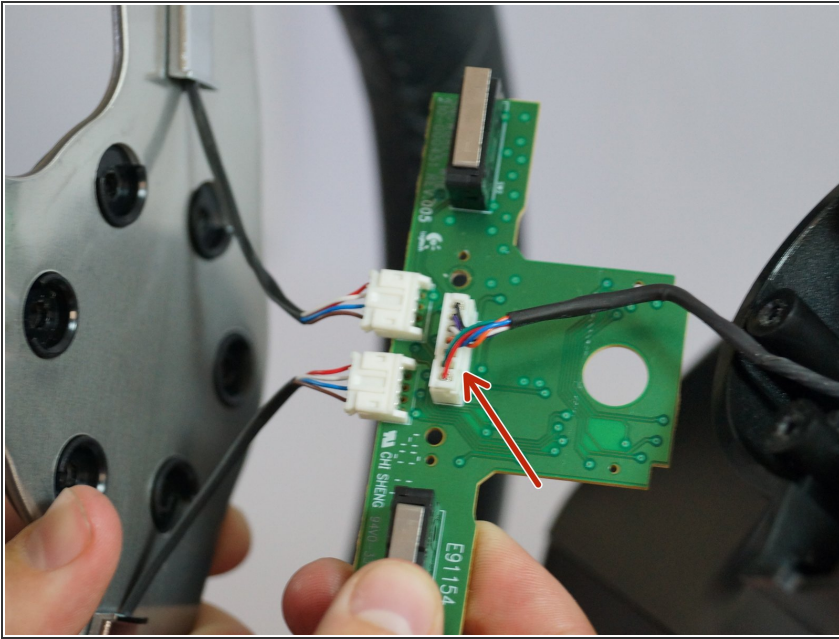
- Remove the two 7.5 mm silver screws holding the green PCB board in the wheel with a Phillips #1 screwdriver.

Step 4



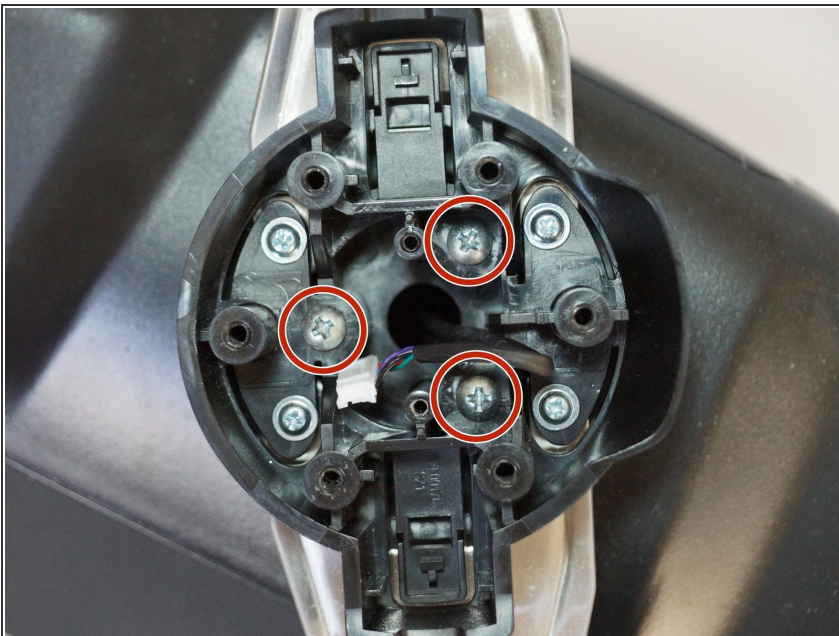
- Carefully remove the PCB board from the wheel hub.

Step 5



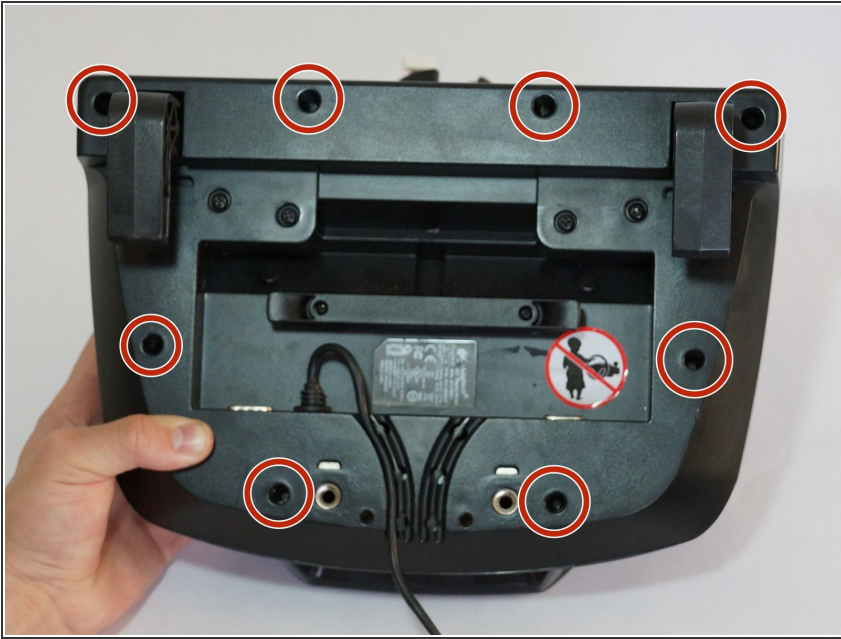
- Carefully pinch and unplug the large 7-pin connector under the PCB board.
- ⚠ Be careful when unplugging this adapter, try not to pull on the wires to avoid damaging them. Instead, wiggle around the plastic connector while pulling on it to loosen it.

Step 6



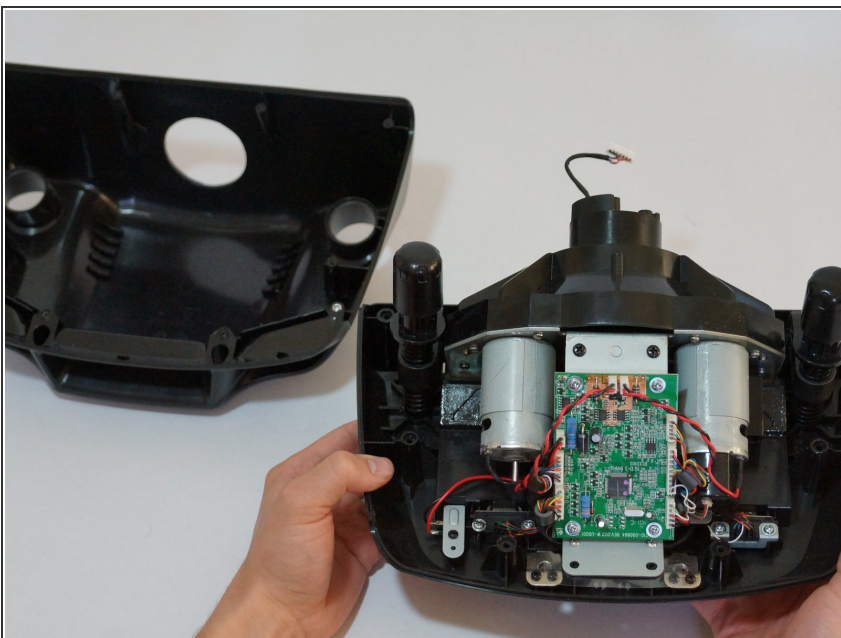
- You can now fully remove the wheel from the hub. Set it aside until you put the wheel back together.
- Remove the innermost three 37.5mm silver screws with a Phillips #1 screwdriver.
- Remove the wheel hub and push the connector through the center of the hub.

Step 7



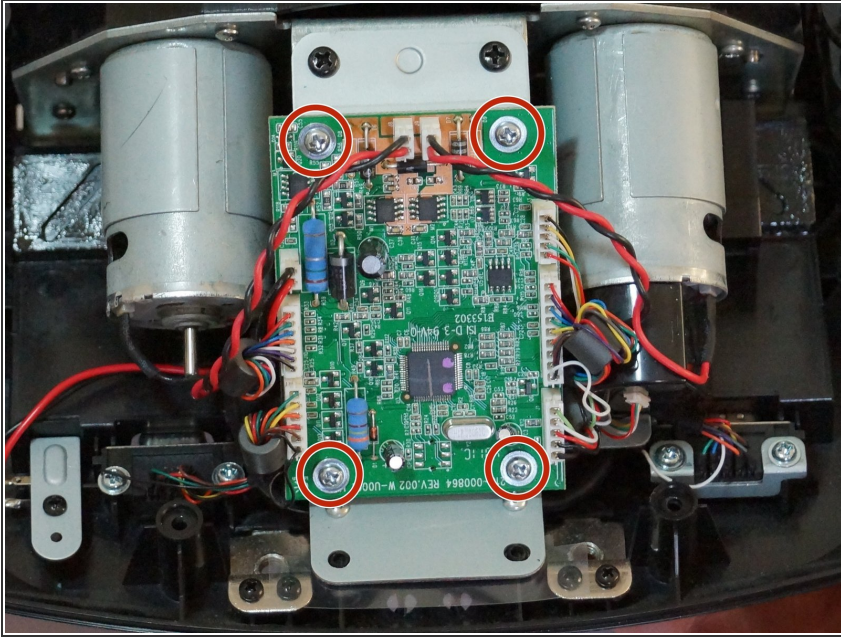
- The wheel hub can now be set aside and flip over the steering wheel housing to reveal the under side.
- Remove the eight 15.9mm silver surrounding screws underneath the wheel housing with a Phillips #1 screwdriver.

Step 8



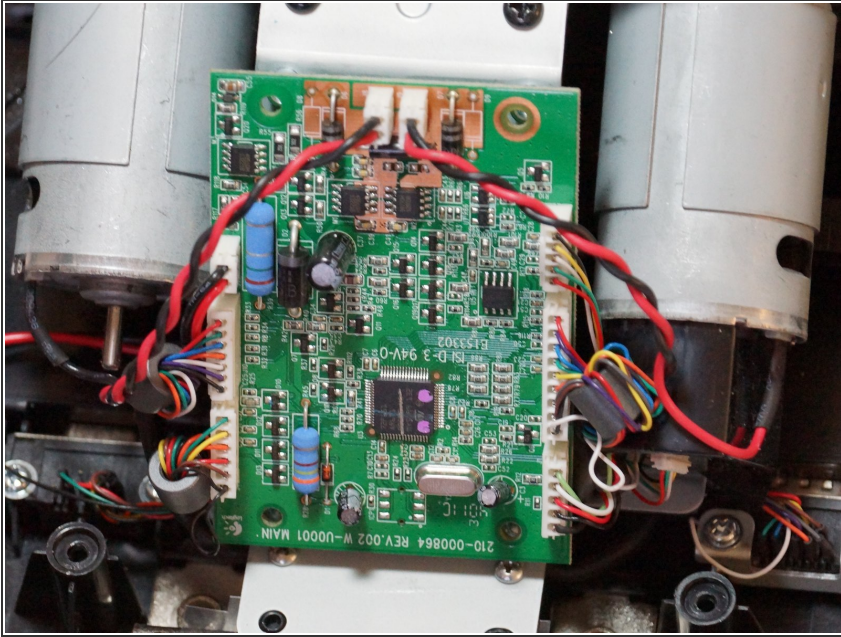
- Rotate the housing back over and remove the top half of the housing revealing the majority of the components of the wheel.
- The housing cover can be set aside until you put the wheel back together.

Step 9



- Remove the four 7.3mm silver screws attaching the green PCB board to the motor housing with a Phillips #1 screwdriver.

Step 10

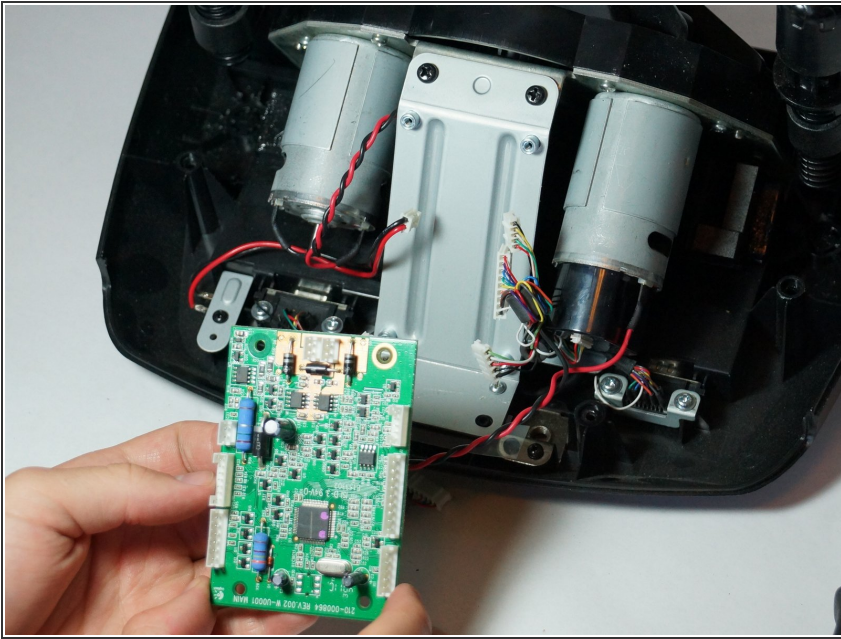


- Unplug the three plastic connectors on the left side of the PCB board.
- Unplug the two plastic connectors on the top of the PCB board.
- Unplug the three plastic connectors on the right side of the PCB board.

⚠ Pulling the plastic connectors requires a lot of force, but be careful and don't pull directly on the wires. Try to wedge or push the male side of the connector out.

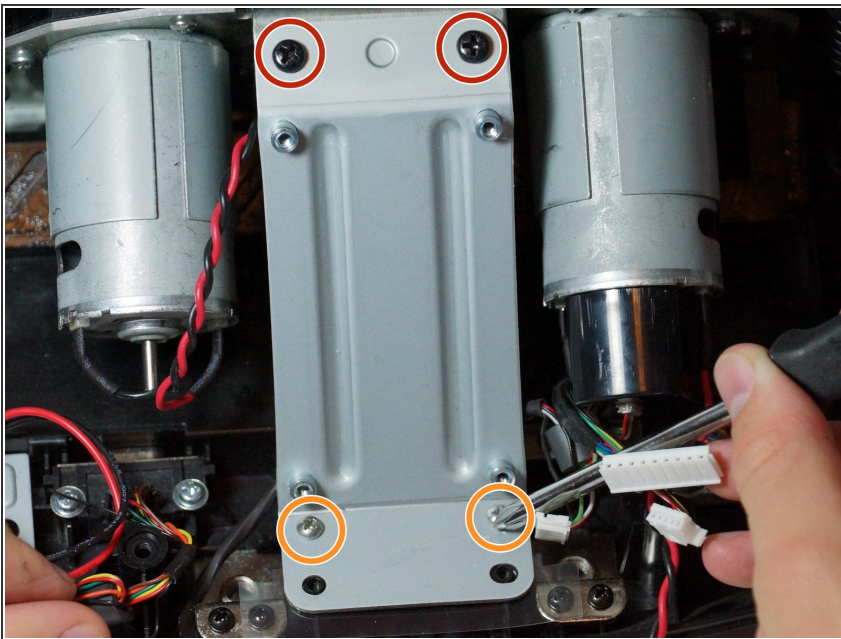
- ⓘ If you need some extra leverage when removing these connectors, try using a plastic opening tool to pry off the connectors.
- ⓘ Removing these connectors allows easier access to the four screws attaching the PCB board mount to the motor housing.

Step 11



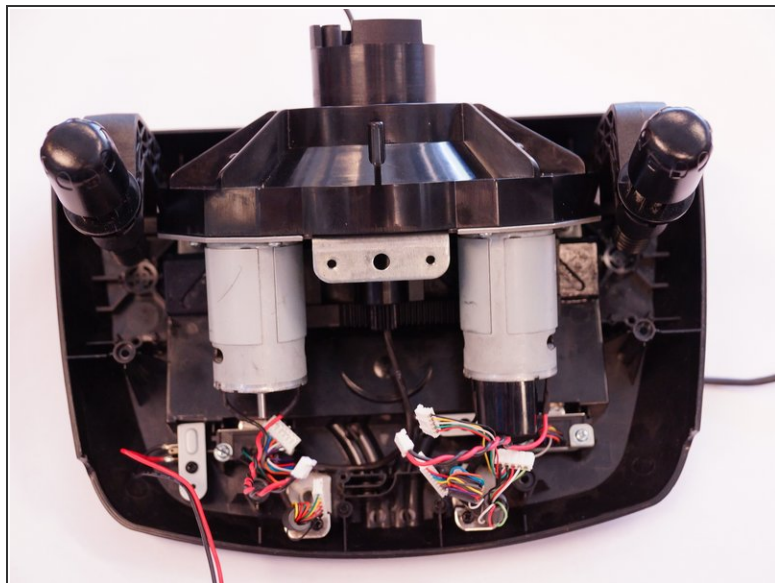
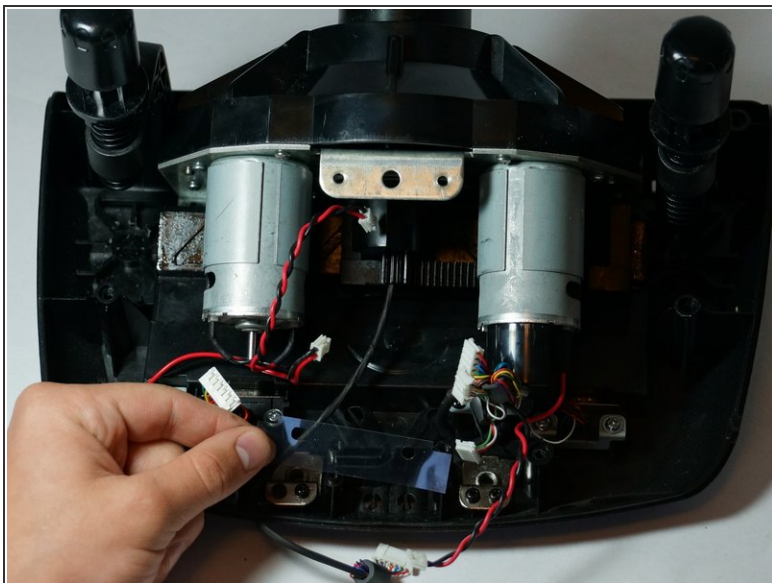
- Remove the PCB board after all of the plastic connectors are disconnected.
- You can now set it aside.

Step 12



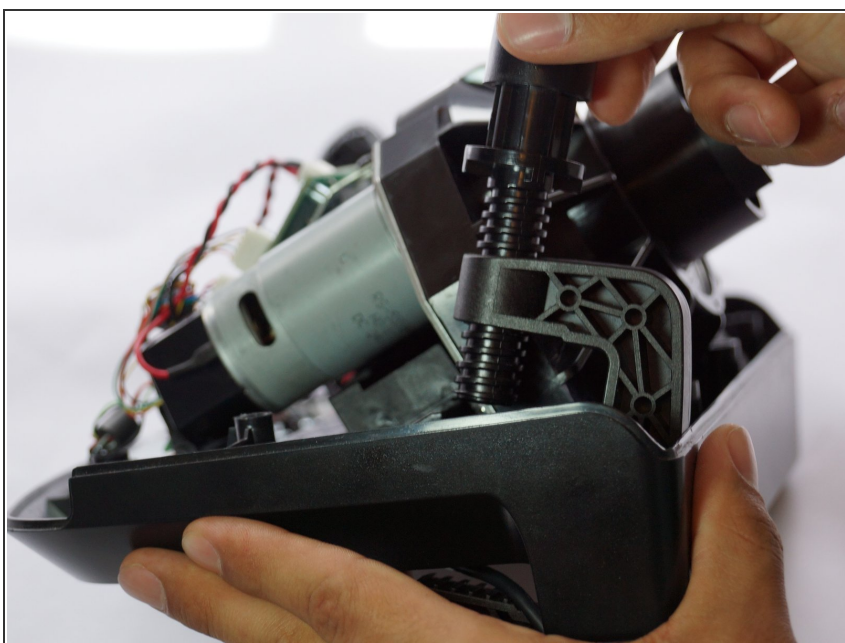
- Remove the two 12.3mm upper black screws with a Phillips #2 screwdriver.
- Remove the two 15.5mm bottom silver screws with a Phillips #1 screwdriver.

Step 13



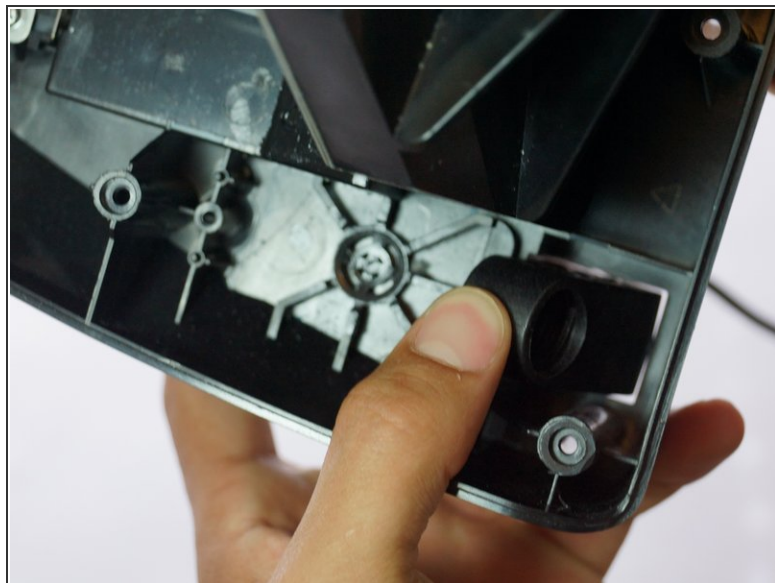
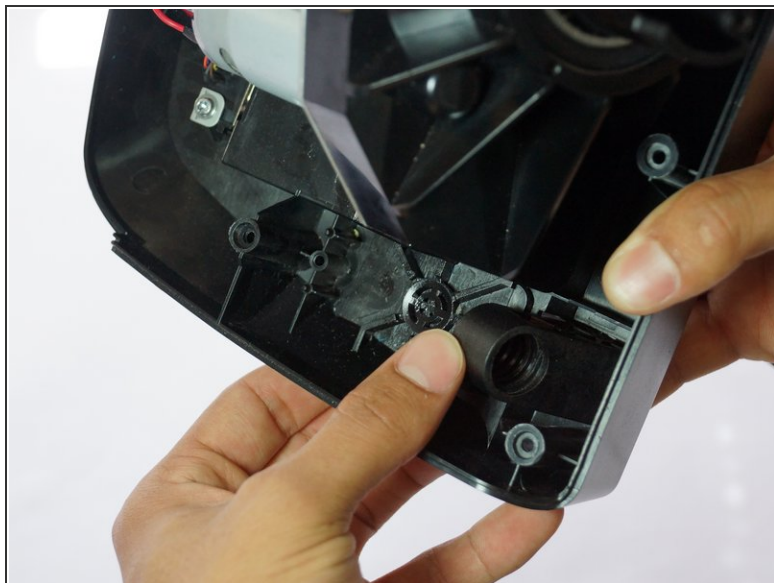
- Remove the PCB board mount and remove the clear plastic piece underneath.
- Set them aside until you reassemble the wheel.

Step 14 — C-Clamp



- Unscrew the piece holding the C-Clamp in place with your hand.

Step 15



- Push the remaining nob forward and then inward through the slot.

Step 16



- The C-Clamp can now be easily pulled out of the bottom of the device.

To reassemble your device, follow these instructions in reverse order.