



Logitech G400s Mouse Cable Replacement

This guide will demonstrate how to replace the cable attaching the G400s to your computer.

Written By: Max Evans





TOOLS:

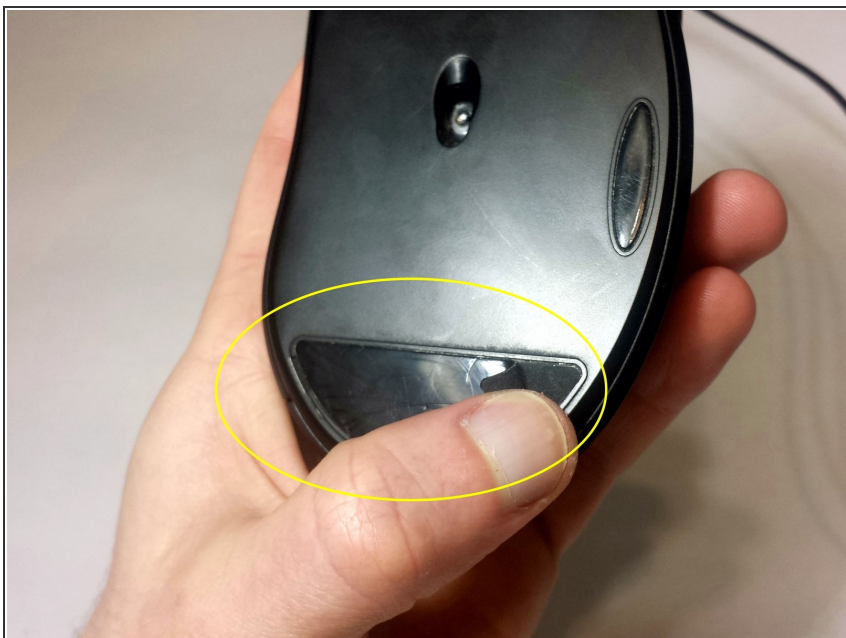
- [Phillips #1 Screwdriver](#) (1)
 - [Jimmy](#) (1)
-

Step 1 — Mouse Cable



- Use a Jimmy to remove the mouse feet.
- Be careful to remove any film left by the mouse feet as well.

Step 2



- Remove the bottom mouse foot using a Jimmy and the same technique as in Step 1.

Step 3



- Use a Phillips #1 screwdriver to remove the three 5 mm Philips screws on the bottom surface.

Step 4



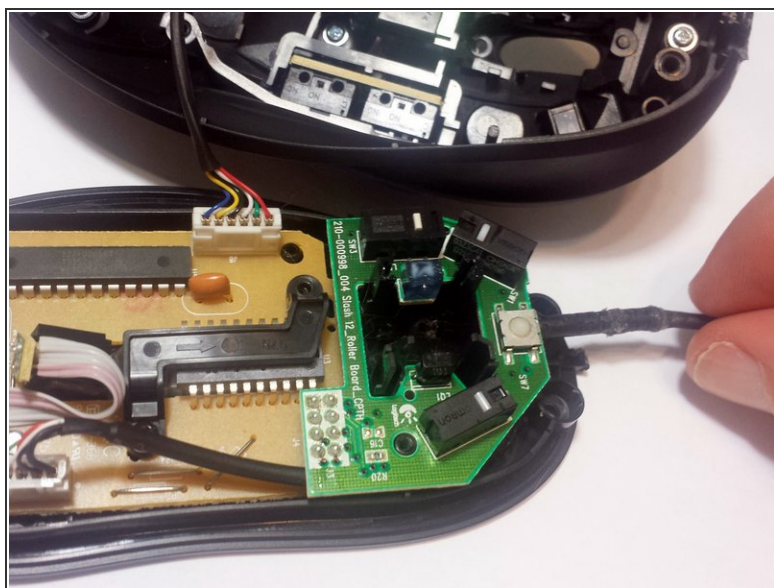
- Gently pull the upper shell away from the bottom platform.

Step 5



- This is what the G400s will look like when the top shell is taken off.

Step 6



- Push the cable into its proper place inside the mouse shell.

To reassemble your device, follow these instructions in reverse order.