



# Logitech G502 Proteus Core Mouse Feet Replacement

The sticker-like feet may need replaced when dirty or if accidentally torn when attempting to reach the screws they cover.

Written By: Sage Farray



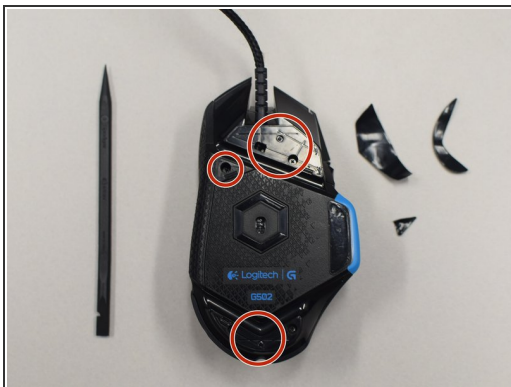
**TOOLS:**

- [Spudger](#) (1)

**PARTS:**

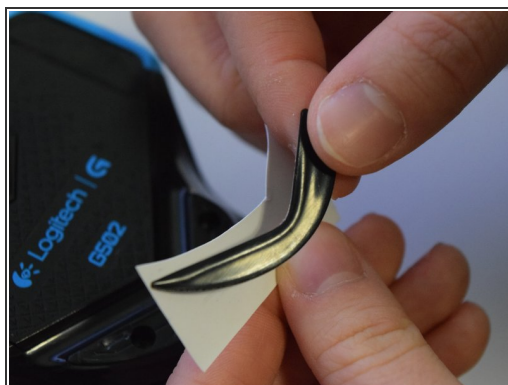
- [Replacement Logitech G502 Proteus Core feet](#) (1)

## Step 1 — Mouse Feet



- Use fingers or nylon spudger to peel old feet off of all three corners where the screw holes are exposed.

## Step 2



- Peel the backing off the new mouse feet to reveal the adhesive.

### Step 3



- Apply the new mouse feet to their designated areas based on shape

### Step 4



- Apply even pressure across the mouse feet to ensure adherence.

## Step 5



- Let adhesive sit for about 5-10 minute with applied pressure.

To reassemble your device, follow these instructions in reverse order.