



Logitech G502 Proteus Core Scroll Wheel Replacement

The default scroll wheel is made of metal and may be a bit noisy for some. Follow this guide if you wish to remove your wheel or replace it.

Written By: Sage Farray





TOOLS:

- [Spudger](#) (1)
- [Phillips #00 Screwdriver](#) (1)



PARTS:

- [Scroll Wheel](#) (1)

Step 1 — Scroll Wheel



- Flip the mouse over to access the feet.

Step 2



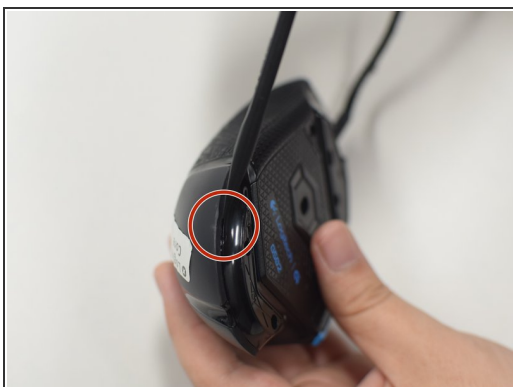
- Use your fingers or a nylon spudger to remove the specified mouse feet in order to reveal the screws.

Step 3



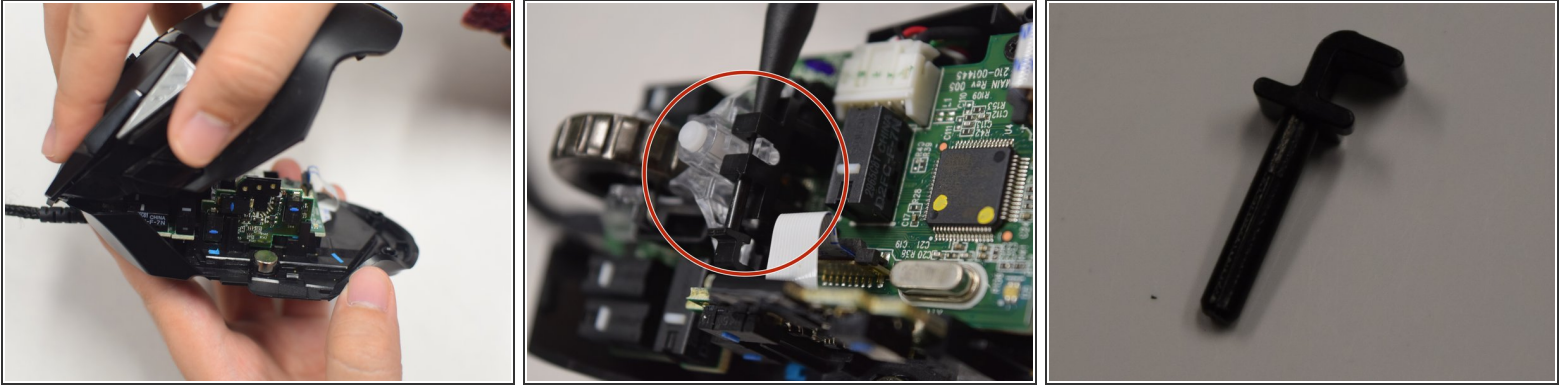
- Use a #00 Philips screw bit to remove the indicated 12.5mm screws.

Step 4



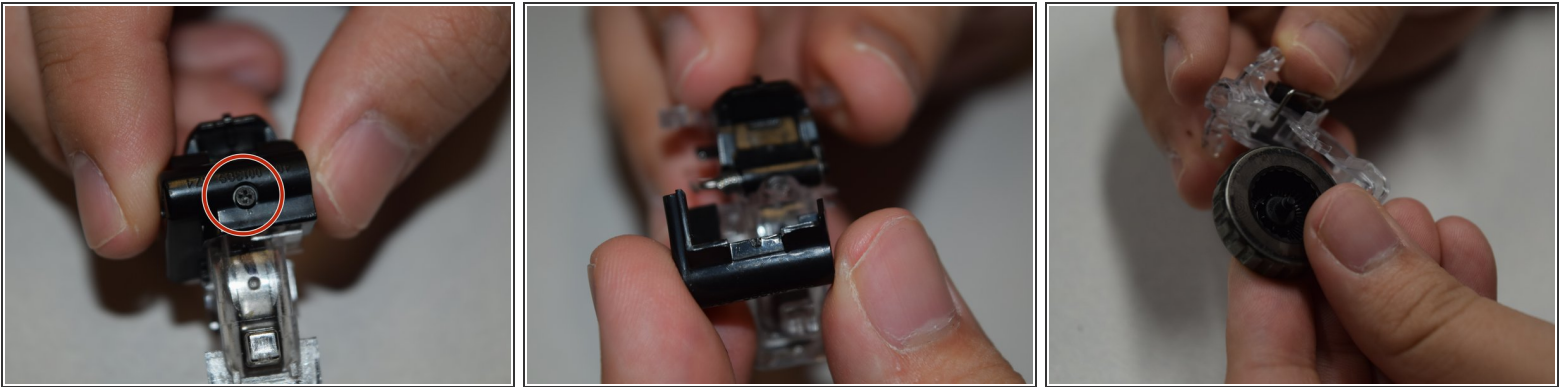
- Use a nylon spudger to pry the top shell from the bottom of the mouse.

Step 5



- Use a nylon spudger to push the fastener pin free.
- ⓘ Be careful not to lose two springs near the front of the mouse underneath the wheel housing. Place them aside safely.

Step 6



- Once the pin is removed, use a #00 Phillips screw bit to remove the 7.5mm screw from the scroll wheel holder.
- Once the plastic scroll wheel holder is off, the scroll wheel is free and can be lifted out.

To reassemble your device, follow these instructions in reverse order.