



Logitech G602 Motherboard Replacement

Open mouse and work with its bottom half. Use iFixit toolkits to remove motherboard of your Logitech G602 gaming mouse.

Written By: Jerico Morales



INTRODUCTION

This guide will teach you how to fully deconstruct the mouse and remove the green motherboard.



TOOLS:

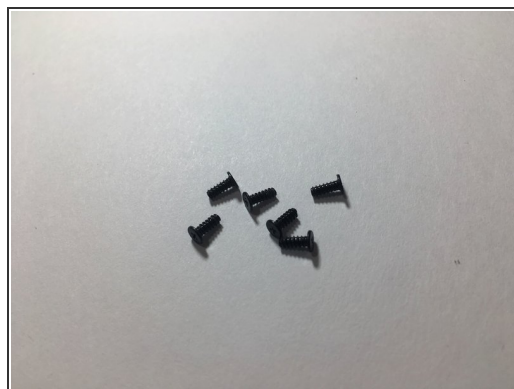
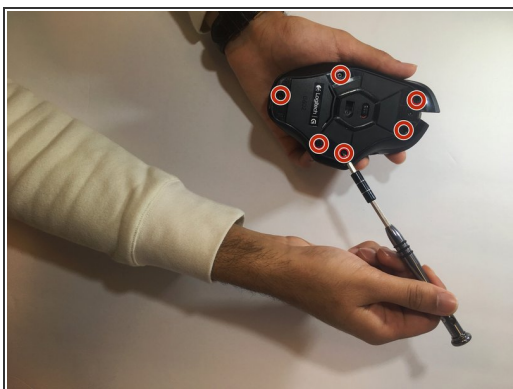
- [Phillips #00 Screwdriver](#) (1)
 - [iFixit Opening Tools](#) (1)
-

Step 1 — Motherboard



- Use a spudger to pry off all 4 mouse feet from under the mouse.

Step 2



- Use a Phillips #00 screwdriver to unscrew all 6 screws (3x5mm) from under the mouse feet.

Step 3



- Use the blue spudger to prop open the battery port.

Step 4



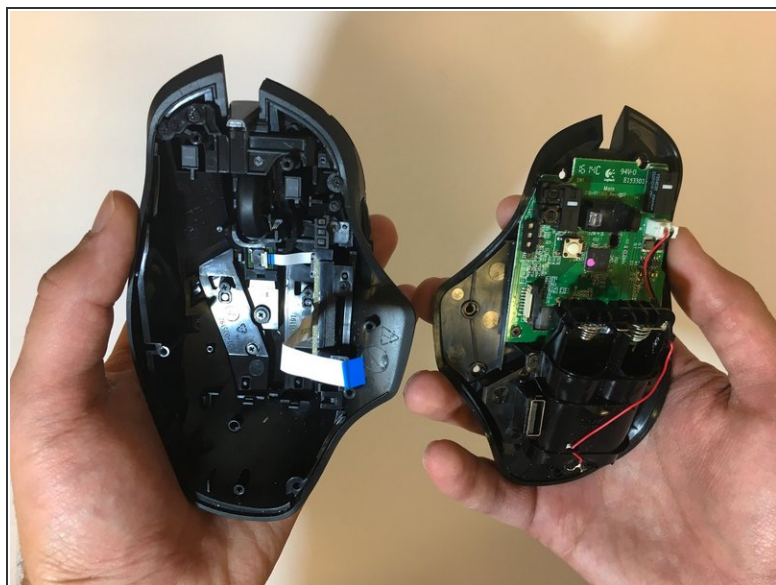
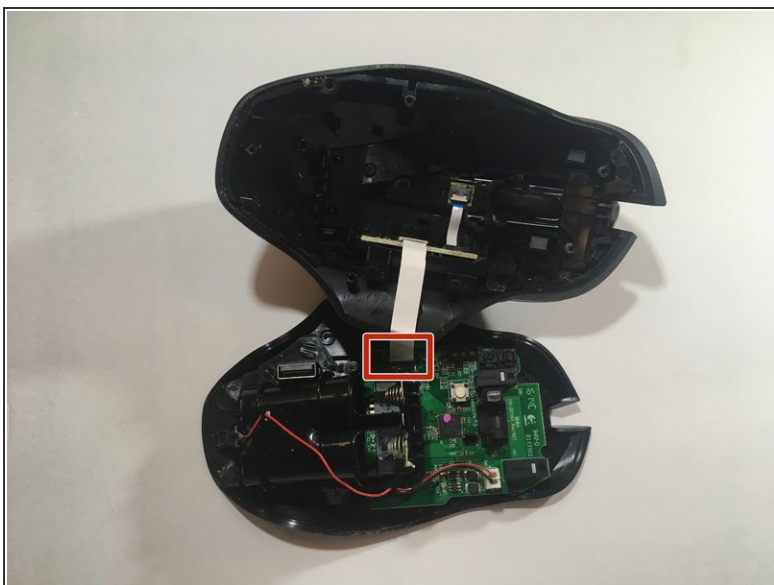
- Remove the two AA batteries from the device.

Step 5



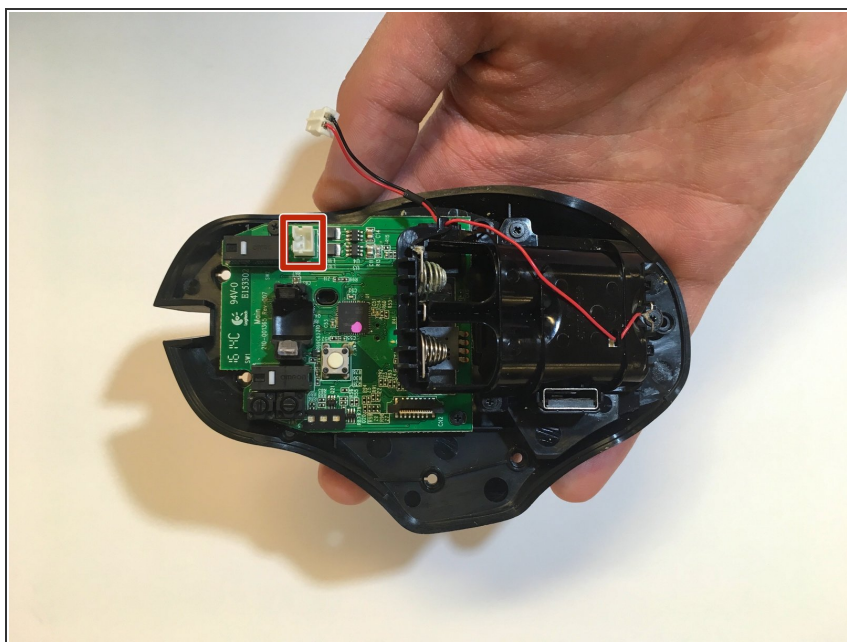
- Lift the top of the mouse from the base of the mouse (separate mouse in half) to expose the mouse's internal hardware.

Step 6



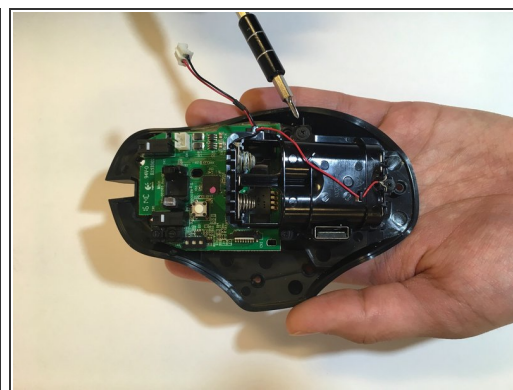
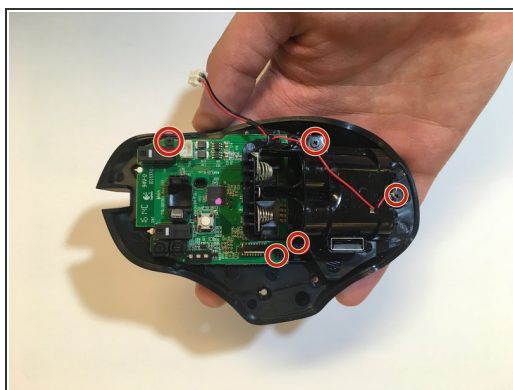
- Use tweezers to grip and detach the white ribbon cable from the motherboard.

Step 7



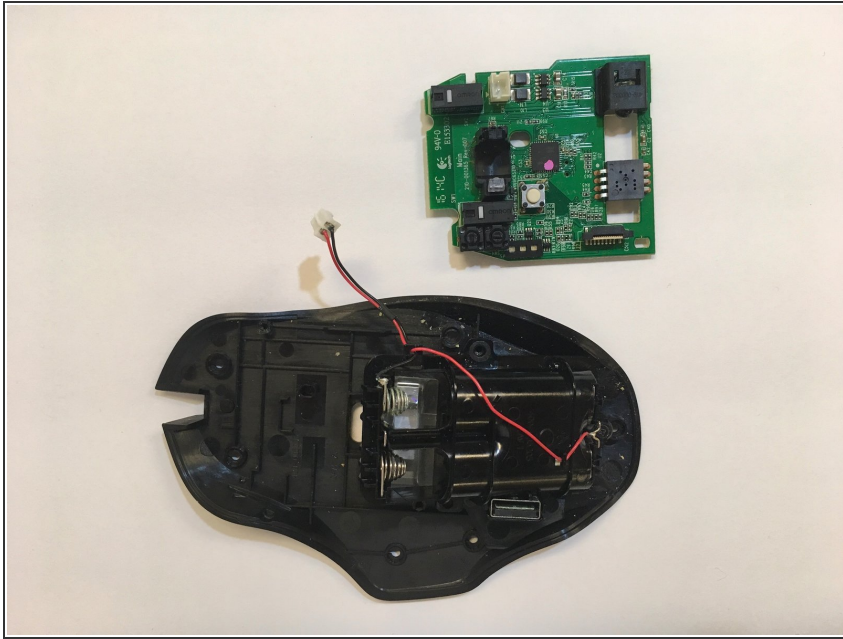
- Use pliers to detach the white plug from the motherboard.

Step 8



- Use a Phillips #00 screwdriver to unscrew all 5 screws (3x5mm) from the battery pack and motherboard.

Step 9



- Remove the motherboard from the mouse.

To reassemble your device, follow these instructions in reverse order.