



# Logitech G602 Scroll Wheel Replacement

Open mouse and work with its top half. Use iFixit toolkits to adjust the metal scroll wheel spring of your Logitech G602 gaming mouse.

Written By: Jerico Morales



---

## INTRODUCTION

This guide will help you adjust the scrollability of the mouse's scroll wheel by replacing the spring.

---

### TOOLS:

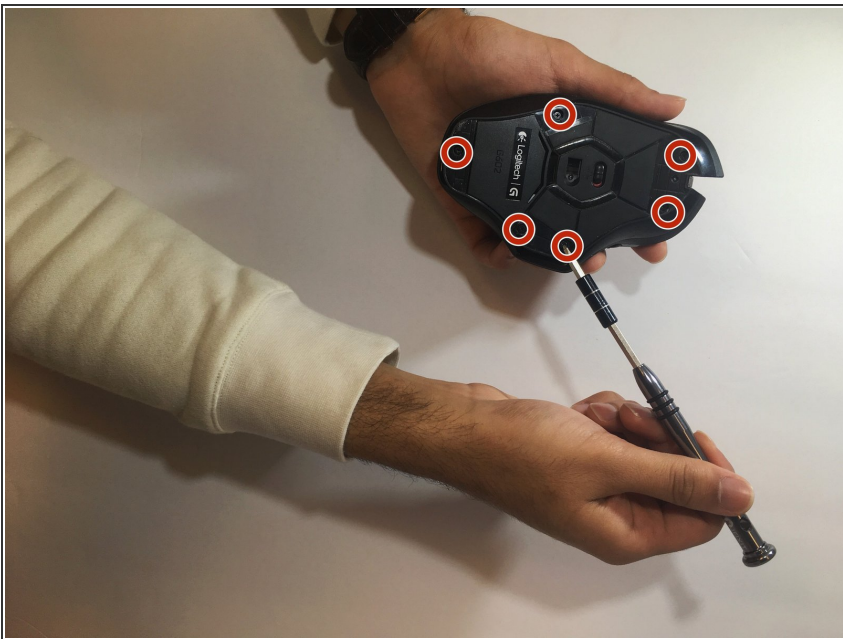
- [iFixit Opening Tools](#) (1)
  - [Spudger](#) (1)
  - [Phillips #00 Screwdriver](#) (1)
-

## Step 1 — Scroll Wheel Spring



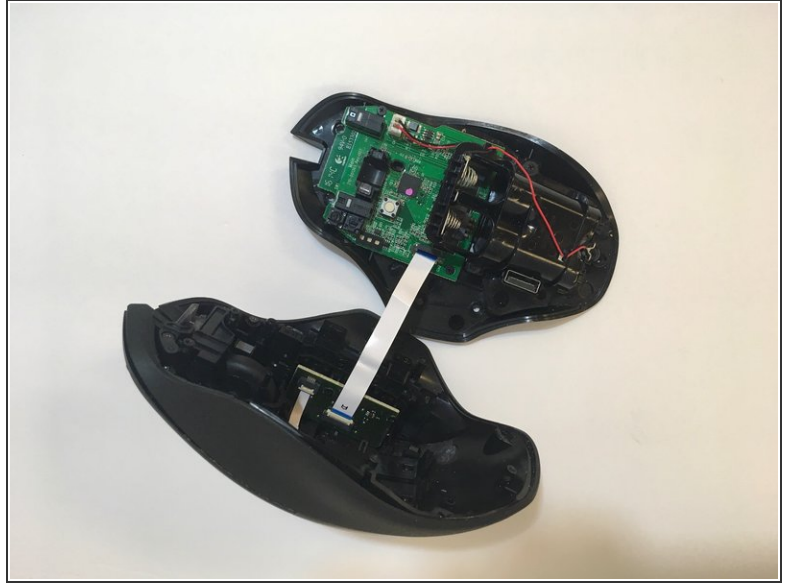
- Use a blue spudger to pry off all 4 mouse feet from under of mouse.

## Step 2



- Use a Phillips #00 screwdriver to unscrew all 6 screws (3x5mm ) from under the mouse feet.

### Step 3



- Lift the top of the mouse from the base of the mouse (separate the mouse in half) to expose the internal hardware.

### Step 4



- Use the black spudger to move the tip of the metal spring off of the wheel.
- ⓘ The scroll wheel will not actually be removed — instead, the adjustment to the metal spring will test the wheel's usability.

To reassemble your device, follow these instructions in reverse order.

This document was generated on 2019-10-31 02:49:50 PM (MST).

