



Logitech G910 Power Cord Replacement

This guide will show how to replace the cord from the Logitech G910 keyboard.

Written By: Ahmed Al Hasan



INTRODUCTION

This guide will teach you how to replace the power cord of your device. It's a relatively easy process, and you won't be needing any special skills.

TOOLS:

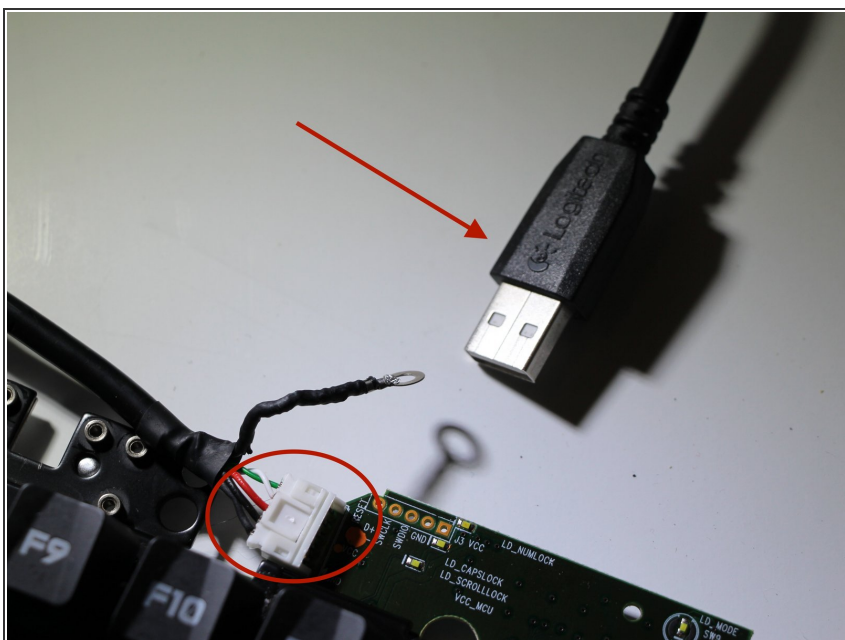
- [Phillips #0 Screwdriver](#) (1)
 - [Metal Spudger](#) (1)
-

Step 1 — Power Cord



- Turn over the keyboard and remove the three screws using a Phillips #0 screwdriver.

Step 2



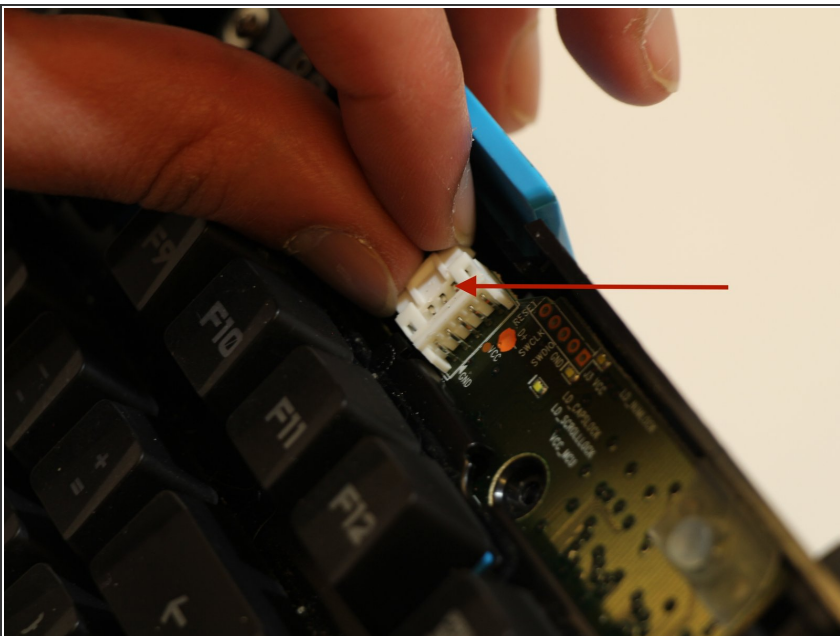
- Remove the USB from the keyboard.

Step 3



- Make sure the cord tab is not broken.

Step 4



- If the cord tab is not broken, close it back.

To reassemble your device, follow these instructions in reverse order.