



Logitech Harmony 1100 Logic Board Replacement

Here are the steps to replace the Logic Board in the Logitech Harmony 1100.

Written By: Chris Slack





TOOLS:

- [iFixit Opening Tools](#) (1)
- [Phillips #00 Screwdriver](#) (1)
- [JIS Driver Set](#) (1)
- [J00 Philips Head Screwdriver](#) (1)
- [Spudger](#) (1)

Step 1 — How to Open Logitech Harmony 1100



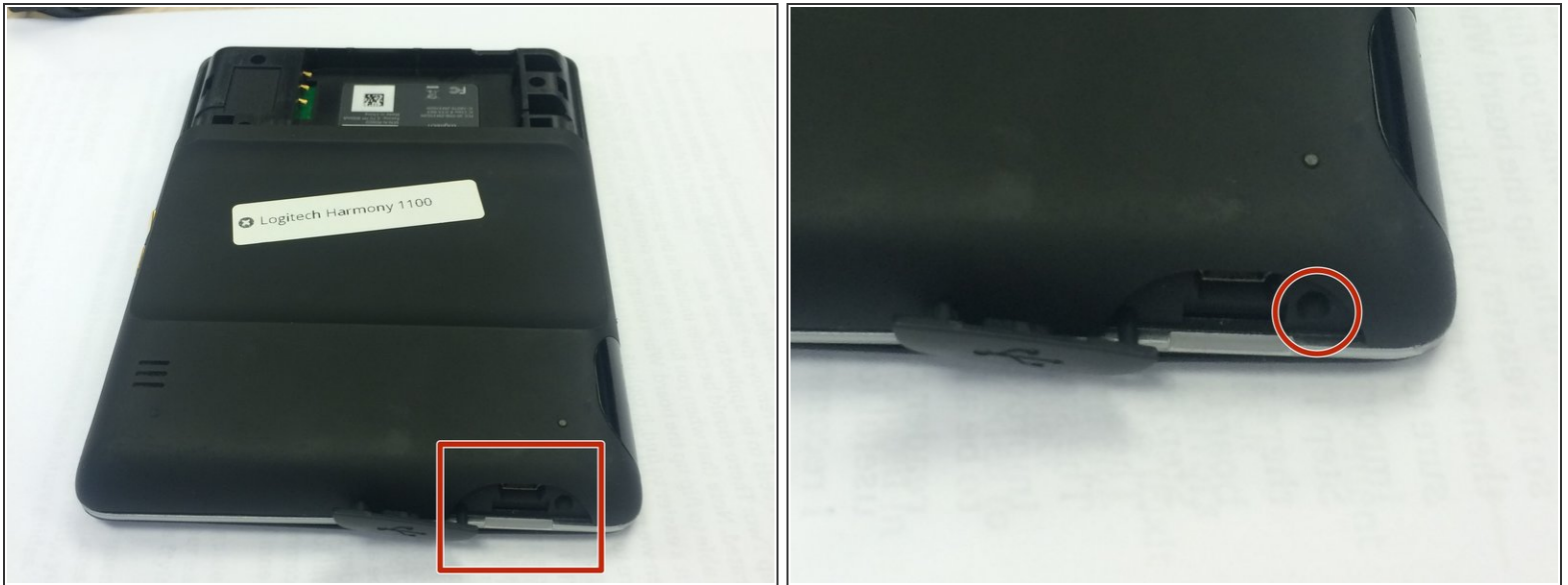
- Remove battery cover, pushing down on circled areas and pushing outward
- Remove battery by lifting up on corner exposed by indent in case

Step 2



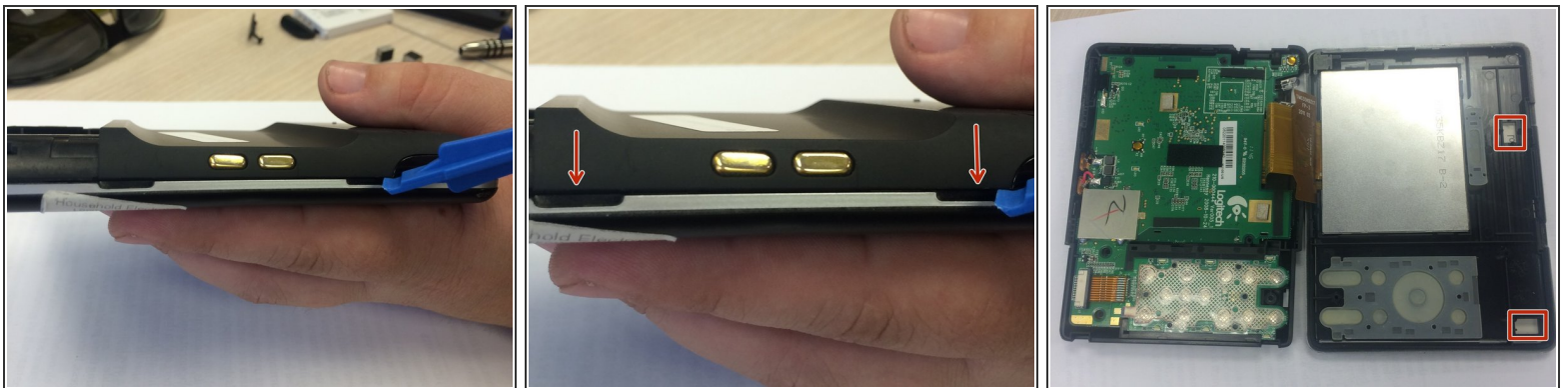
- Use a J0 screwdriver head
- Remove 3 screws from battery compartment

Step 3



- Open connector port on side
- Remove screw with PH00 screwdriver head

Step 4

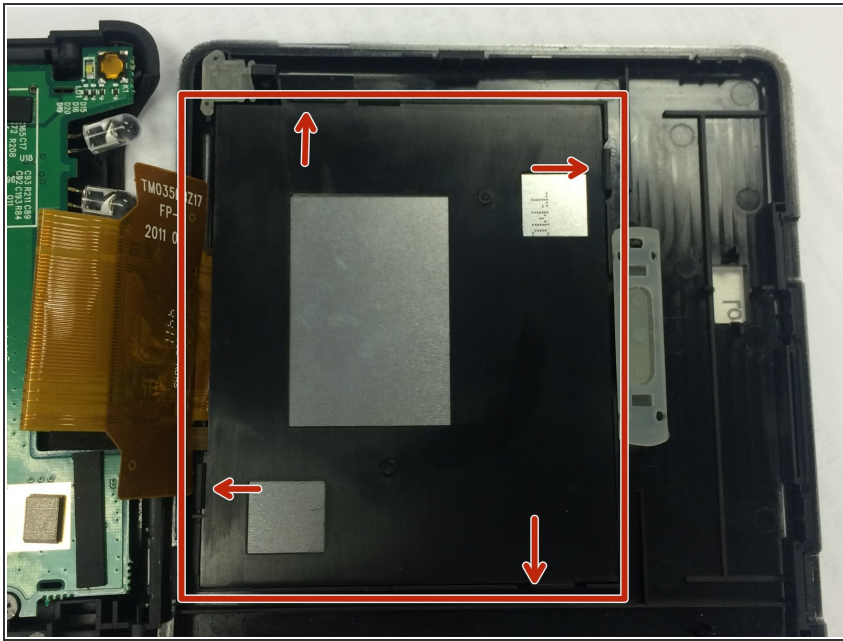


- Use plastic opening tool to pry at the open slits on the side.

⚠ One or two silver foam cubes may pop out of the device. These belong in the slots shown in the third picture. They do not need to go back until reassembly.

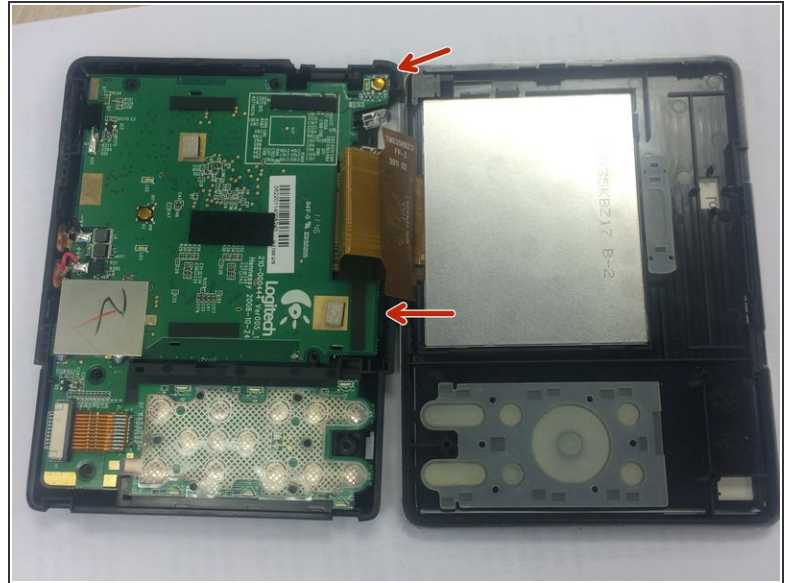
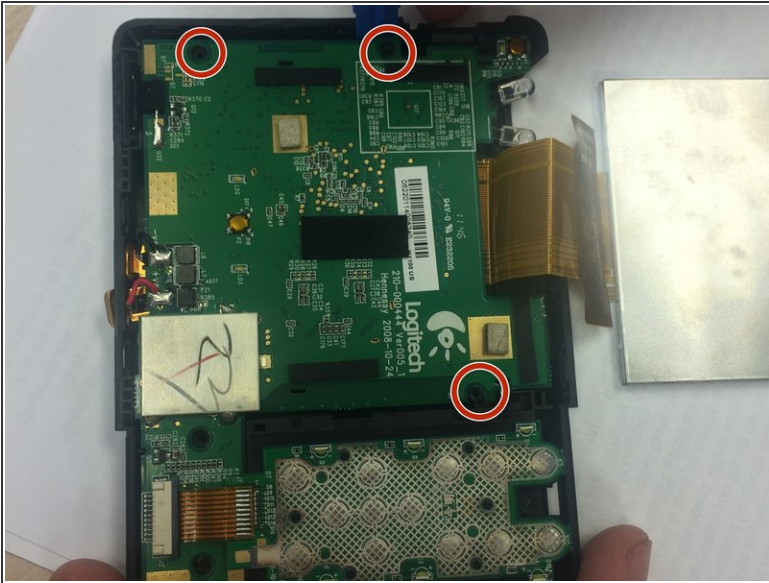
⚠ Also the plastic connector door will fall off. It will need to be put back upon reassembly.

Step 5 — Screen



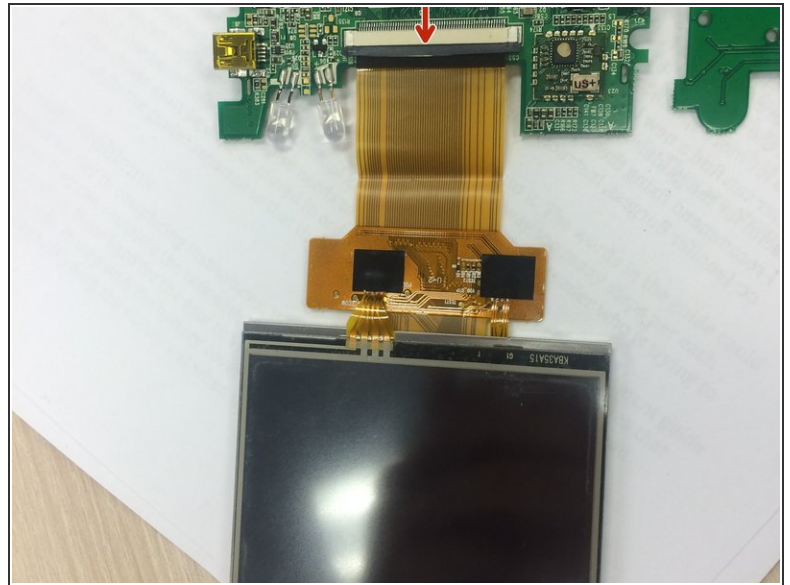
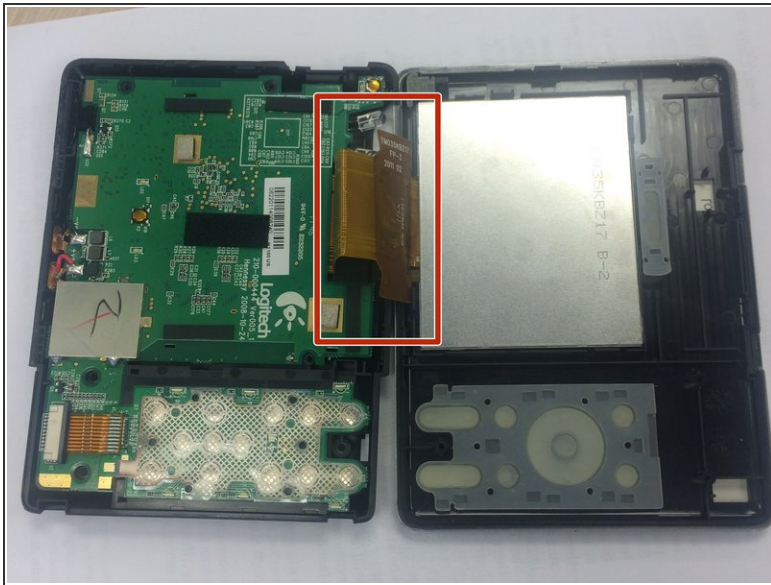
- Pop out plastic screen backing on front of device.
- Loosen screen backing by pushing back on plastic clips that are holding the black screen backing in place.

Step 6



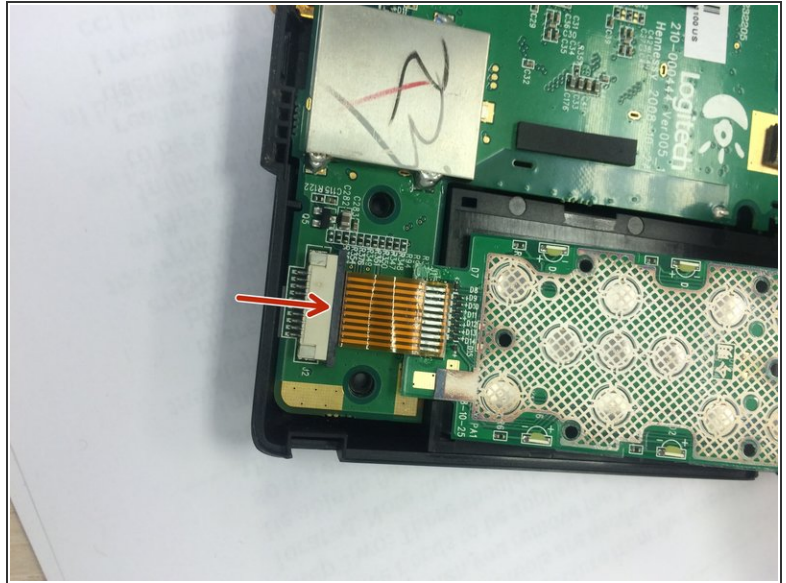
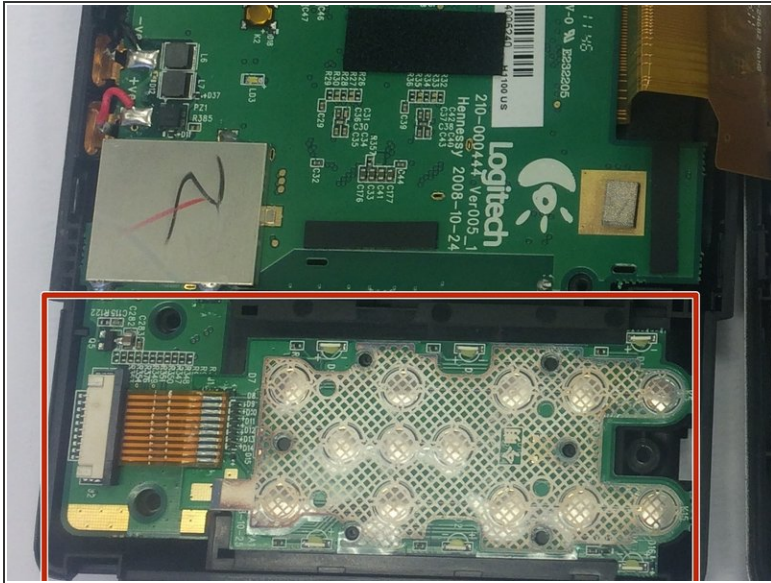
- Use PH00 Phillips head from the iFixit Tool Kit to remove 3 screws from the circuit on the back half of the device.
- Flip over the larger circuit board to the left.
- ⓘ Use the edge of the circuit board to flip the board over.
- ⚠ The connector port in the top right corner may make removal difficult. Lift the logic board above the screw ports, and the connector port should slide out easily.

Step 7



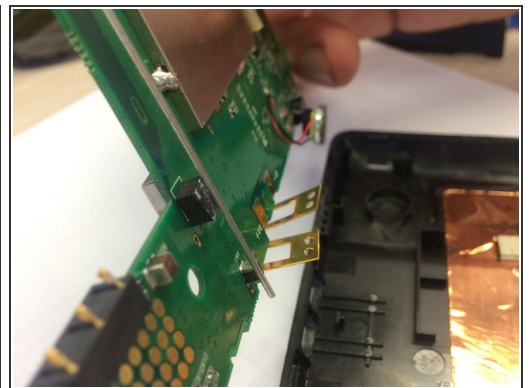
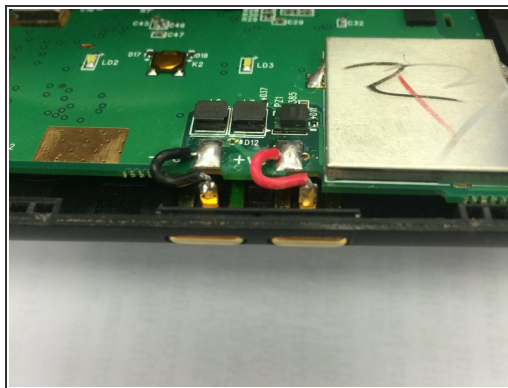
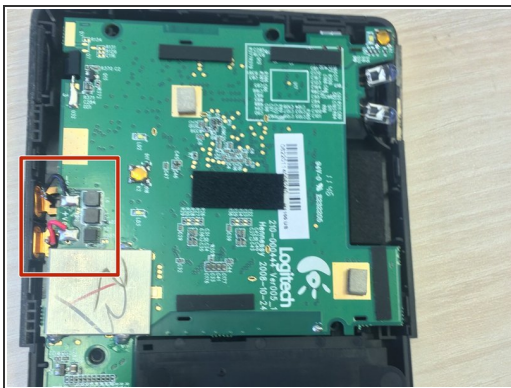
- Find the wire that attaches to the screen
- Push dark grey bar that is used to lock the screen in place, outward from beige bar to disconnect.
- Remove screen wire

Step 8 — Logic Board



- Push grey bar away from the beige bar
- Remove button tab wire from logic board

Step 9



- Lift on back of gold tab to unsecure positive and negative wires from device
- Pull the gold buttons in towards the center of the device to detach logic board from case