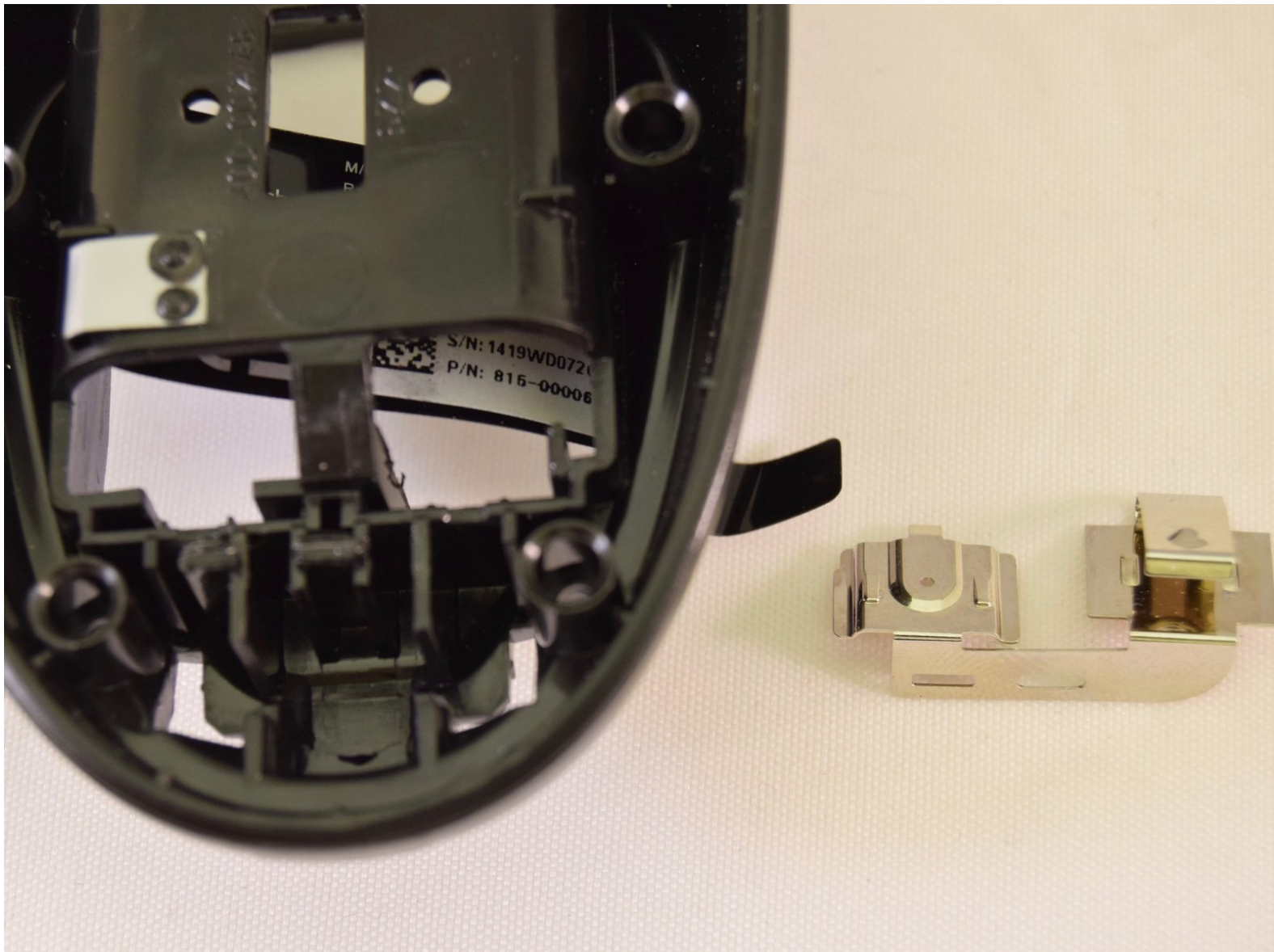




Logitech Harmony 650 Battery Terminal Replacement

How to remove and replace the battery terminal on the Logitech Harmony 650 Universal Remote.

Written By: Connor Gallagher



INTRODUCTION

It is recommended to have the iFixit ProTech toolkit and have already taken the case apart.



TOOLS:

- [Pro Tech Toolkit](#) (1)
 - [iFixit Opening Tools](#) (1)
 - [Metal Spudger](#) (1)
 - [Heavy-Duty Spudger](#) (1)
 - [Phillips #000 Screwdriver](#) (1)
-

Step 1 — Case



- Remove the battery cover by applying pressure to the indented area and pushing the cover toward the rear of the device.

Step 2



- Remove the batteries using the silver pull tab.

Step 3



- Using a J000 Philips head screwdriver remove the four 5mm screws around the rim of the battery chamber.

Step 4



- Remove the small plastic cover beneath the plastic LED housing by using a 3.0 flathead screwdriver and a spudger to pry it off. It is glued to the case. If you are having trouble removing it try applying some heat to loosen the glue.

Step 5



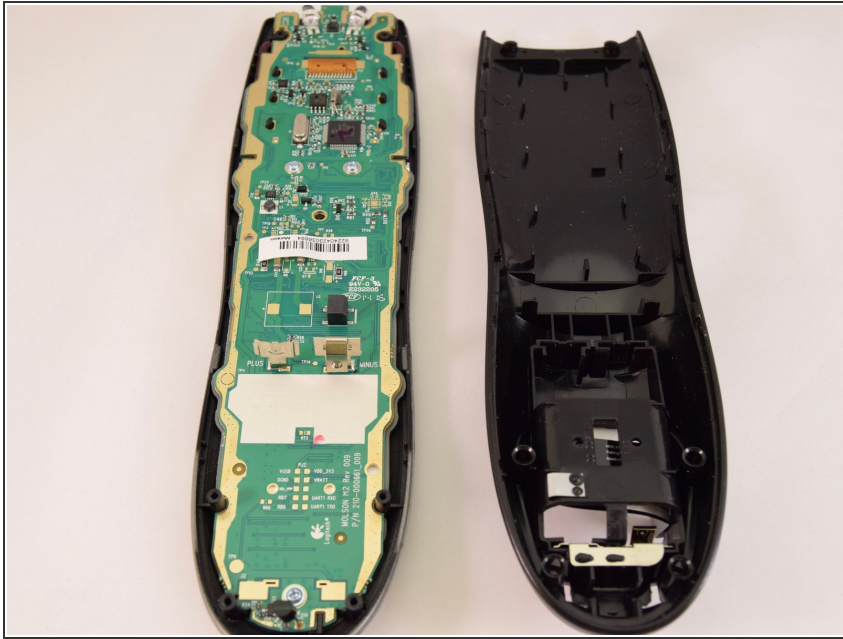
- Remove the two 5mm screws located underneath the cover using a J000 Philips screwdriver bit.

Step 6



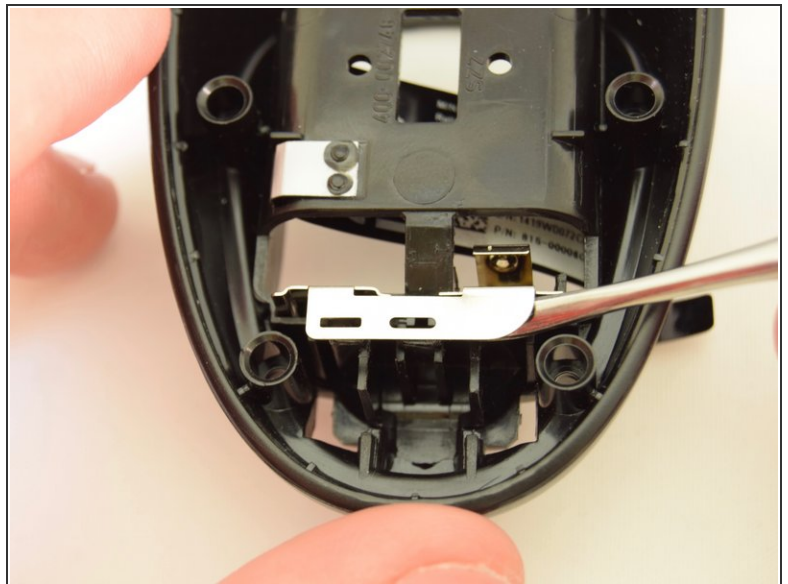
- Using a plastic opening tool, pry the case off starting from the top of the device (nearest the transmitter). There are 3 tabs along the side of the case and one at the back.
- The top led protector plastic cover will also be freed once back is removed.

Step 7



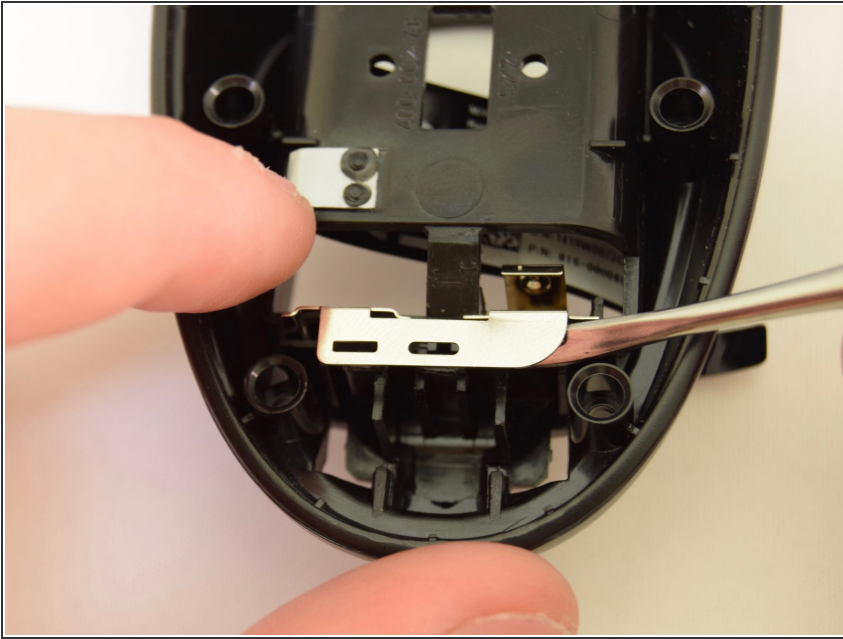
- Remove the rear cover.

Step 8 — Battery Terminal



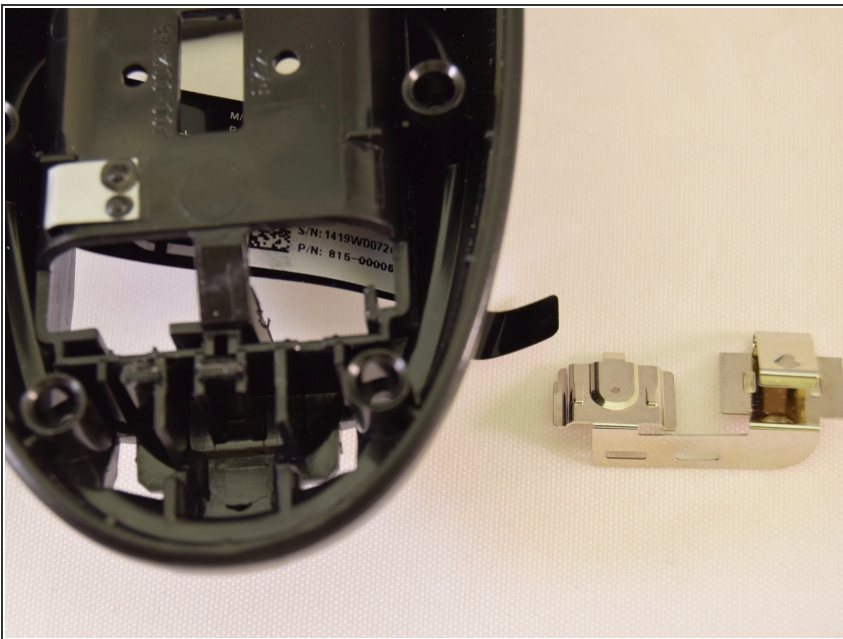
- Using the small end of a spudger, pry out the terminal from the interior of the case.

Step 9



- Start from one side and work your way to the other side using the spudger.

Step 10



- Remove the terminal.

To reassemble your device, follow these instructions in reverse order.