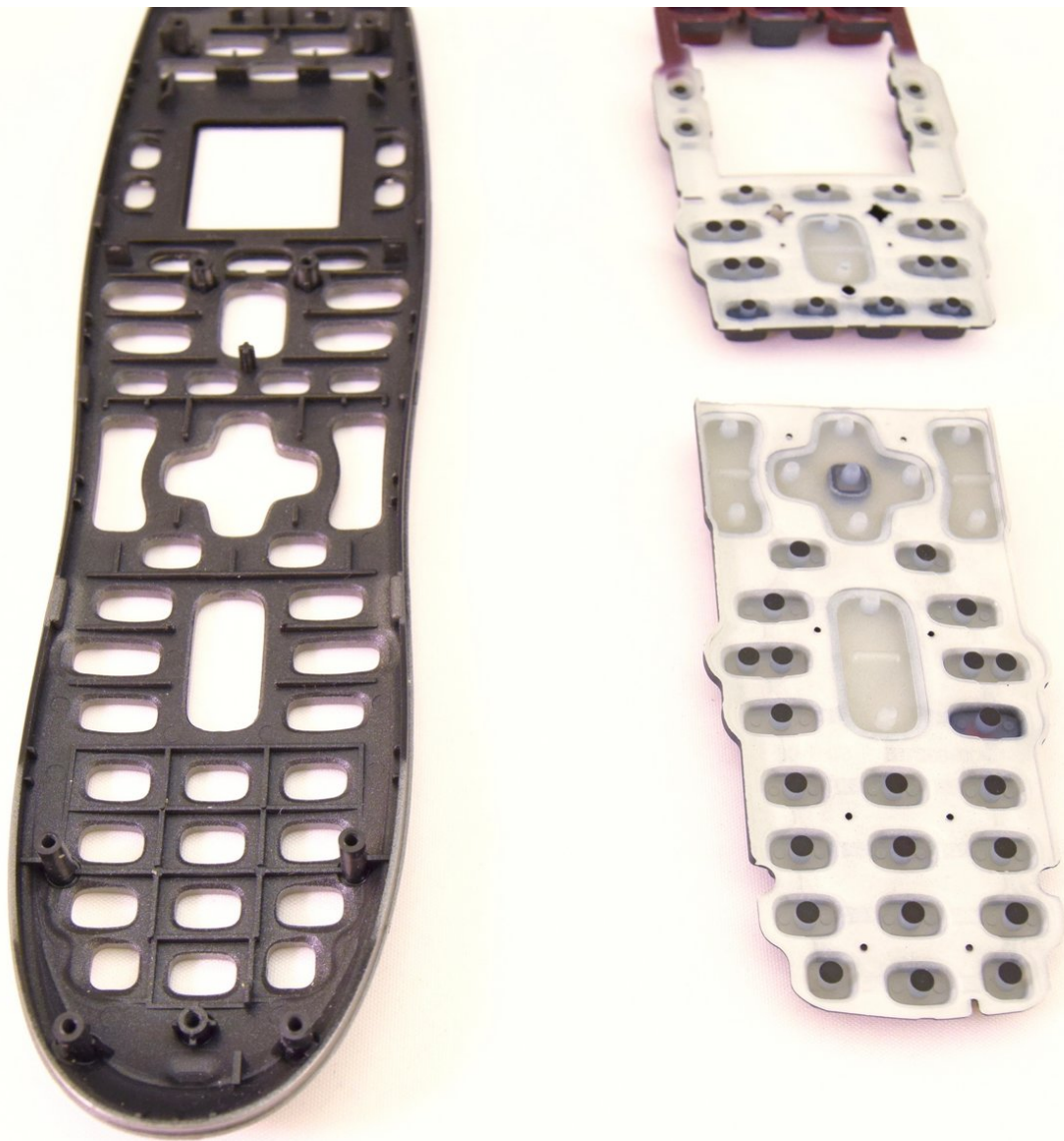




# Logitech Harmony 650 Button Replacement

How to replace the buttons on the Logitech Harmony 650 Universal Remote.

Written By: Connor Gallagher



---

## INTRODUCTION

It is recommended that you have the iFixit ProTech Tool Kit and have already taken out the Motherboard and removed the case.

---

### TOOLS:

- [Pro Tech Toolkit](#) (1)
  - [Heavy-Duty Spudger](#) (1)
  - [Phillips #000 Screwdriver](#) (1)
  - [iFixit Opening Tools](#) (1)
-

## Step 1 — Case



- Remove the battery cover by applying pressure to the indented area and pushing the cover toward the rear of the device.

## Step 2



- Remove the batteries using the silver pull tab.

### Step 3



- Using a J000 Philips head screwdriver remove the four 5mm screws around the rim of the battery chamber.

### Step 4



- Remove the small plastic cover beneath the plastic LED housing by using a 3.0 flathead screwdriver and a spudger to pry it off. It is glued to the case. If you are having trouble removing it try applying some heat to loosen the glue.

## Step 5



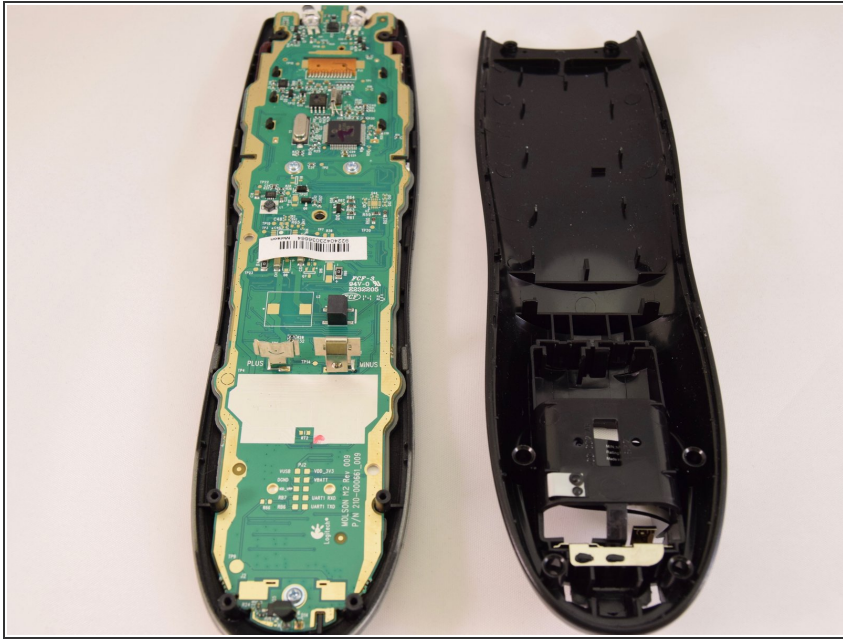
- Remove the two 5mm screws located underneath the cover using a J000 Philips screwdriver bit.

## Step 6



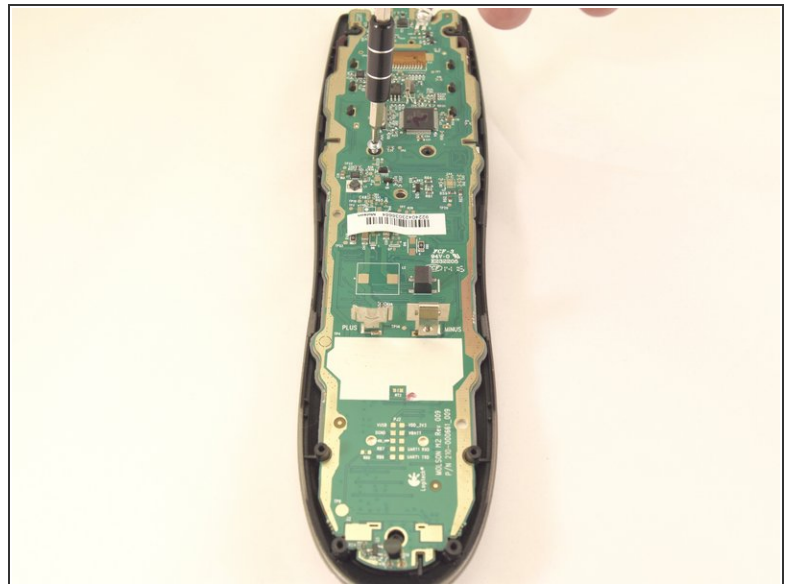
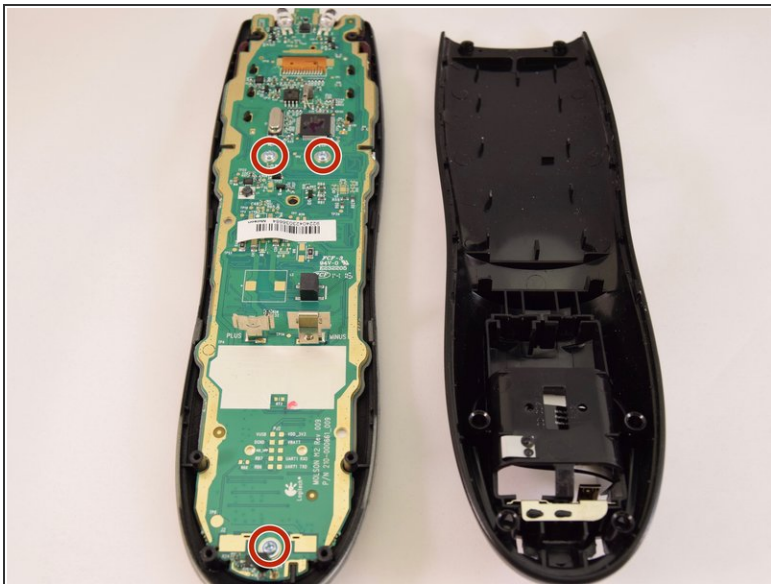
- Using a plastic opening tool, pry the case off starting from the top of the device (nearest the transmitter). There are 3 tabs along the side of the case and one at the back.
- The top led protector plastic cover will also be freed once back is removed.

## Step 7



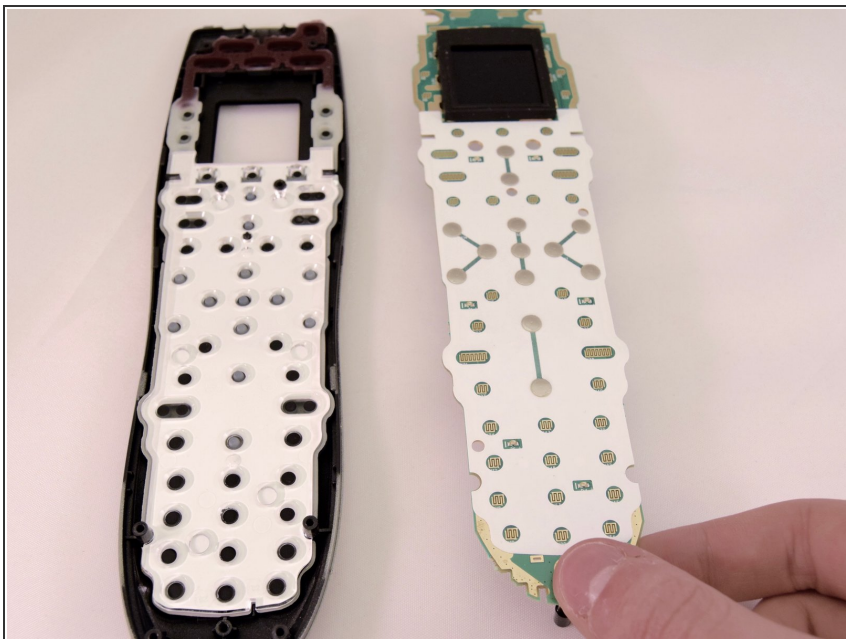
- Remove the rear cover.

## Step 8 — Motherboard



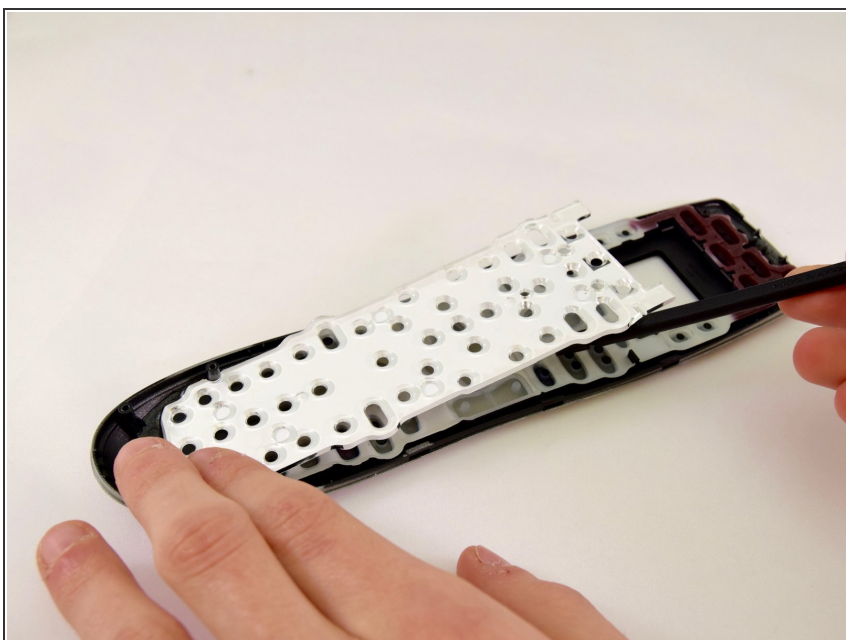
- Using a J0 screwdriver remove the three 5mm screws holding the mother board to the front face. Two are located just below the processor in the middle of the device and the third is located at the very bottom.

## Step 9



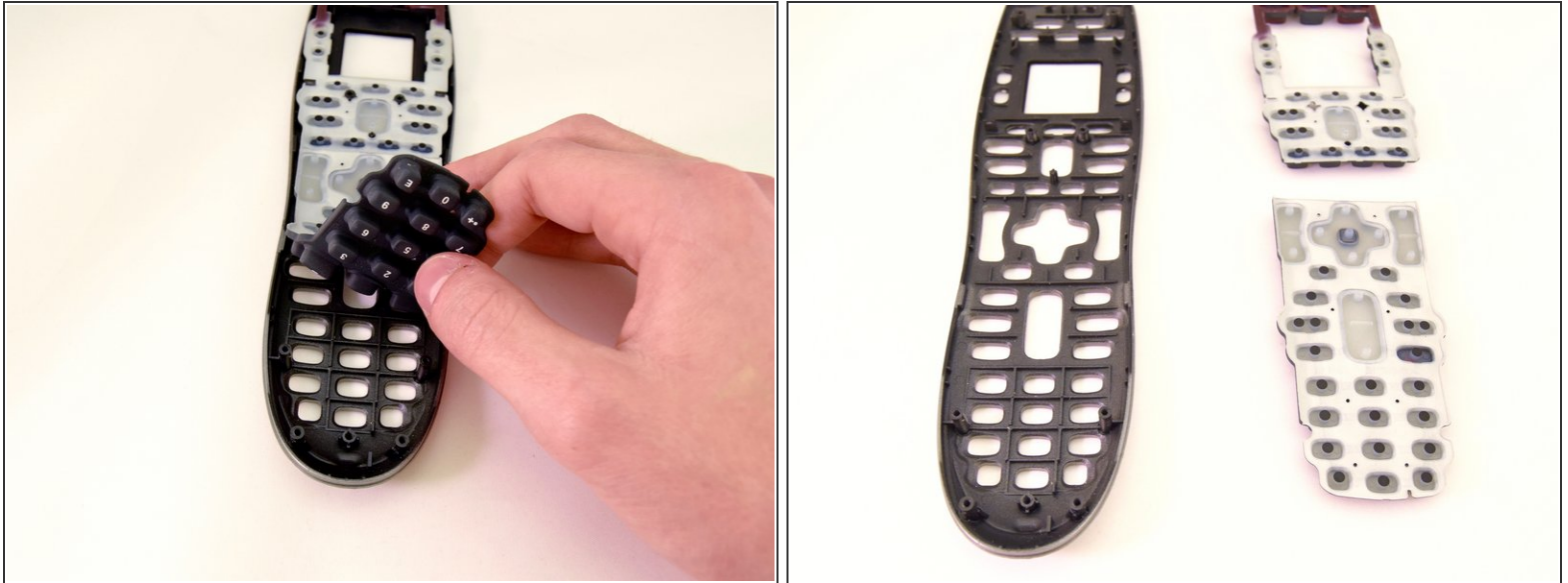
- Remove the motherboard by gently pulling it away from the case.

## Step 10 — Button



- Using a spudger, gently pry the bottom retaining place from the front case.

## Step 11



- Peel away both the upper and lower sets of buttons using your fingers.

To reassemble your device, follow these instructions in reverse order.