



Logitech Harmony 650 Case Replacement

How to remove the case of the Logitech Harmony 650.

Written By: Connor Gallagher



INTRODUCTION

This guide shows you how to begin the disassembly of the Logitech Harmony 650 Universal Remote. It is recommended that you have the iFixit ProTech Toolkit.



TOOLS:

- [Pro Tech Toolkit](#) (1)
 - [Phillips #000 Screwdriver](#) (1)
 - [Heavy-Duty Spudger](#) (1)
 - [iFixit Opening Tools](#) (1)
-

Step 1 — Case



- Remove the battery cover by applying pressure to the indented area and pushing the cover toward the rear of the device.

Step 2



- Remove the batteries using the silver pull tab.

Step 3



- Using a J000 Philips head screwdriver remove the four 5mm screws around the rim of the battery chamber.

Step 4



- Remove the small plastic cover beneath the plastic LED housing by using a 3.0 flathead screwdriver and a spudger to pry it off. It is glued to the case. If you are having trouble removing it try applying some heat to loosen the glue.

Step 5



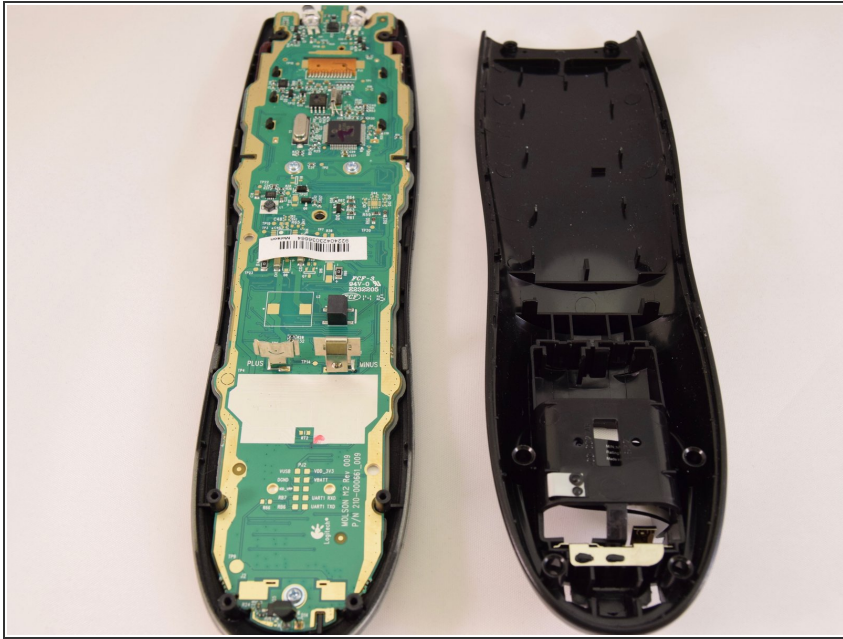
- Remove the two 5mm screws located underneath the cover using a J000 Philips screwdriver bit.

Step 6



- Using a plastic opening tool, pry the case off starting from the top of the device (nearest the transmitter). There are 3 tabs along the side of the case and one at the back.
- The top led protector plastic cover will also be freed once back is removed.

Step 7



- Remove the rear cover.

To reassemble your device, follow these instructions in reverse order.