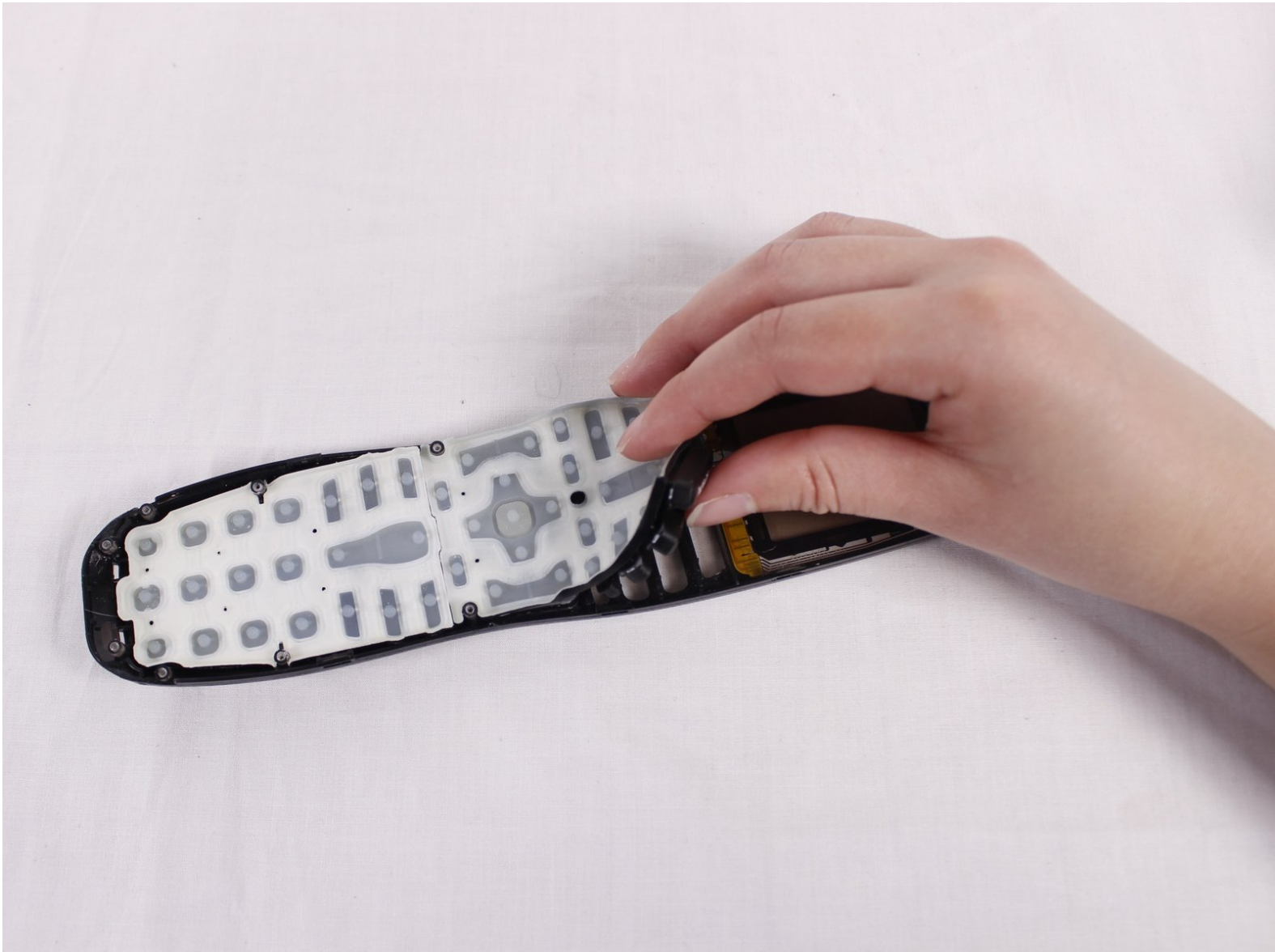




Logitech Harmony 900 Button Pad Replacement

This guide will show you how to replace the buttons on the Logitech Harmony 900.

Written By: Tyler Hanks



INTRODUCTION

This guide shows how to replace the buttons on the Logitech Harmony 900. This is useful for if your buttons get stuck or broken.



TOOLS:

- [Flathead 3/32" or 2.5 mm Screwdriver](#) (1)
- [Credit Card / Plastic](#) (1)
- [Tweezers](#) (1)
- [Phillips #0 Screwdriver](#) (1)



PARTS:

- [Logitech Harmony 900 Button Pads](#) (1)

Step 1 — Battery



- Press the oval shaped button on the lower back of the remote to release the battery cover.
- While pressing the button, remove the cover.

Step 2



- Push the battery in, pull it up, and slide it out.

Step 3 — Motherboard



- Using tweezers, peel off the sticker located under the battery cover to reveal two screws.

Step 4



- Locate and unscrew the four 50mm screws using the Philips #0 screwdriver.

Step 5



- Use a credit card to pry the black, plastic, back cover off of the device.
- ⓘ You may need to get the process started with a metal prying tool before you start using the credit card.

Step 6



- Locate the three 50mm screws on the back of the remote and remove them using the Phillips #0 screwdriver.

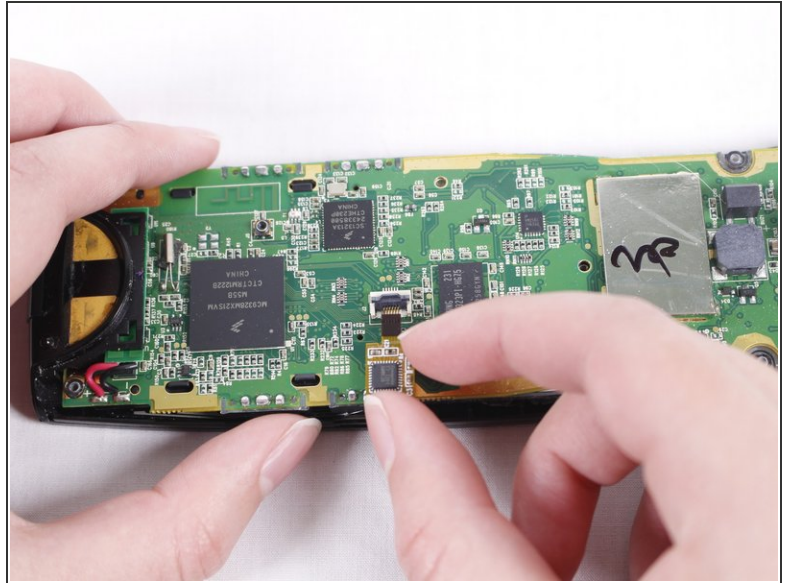
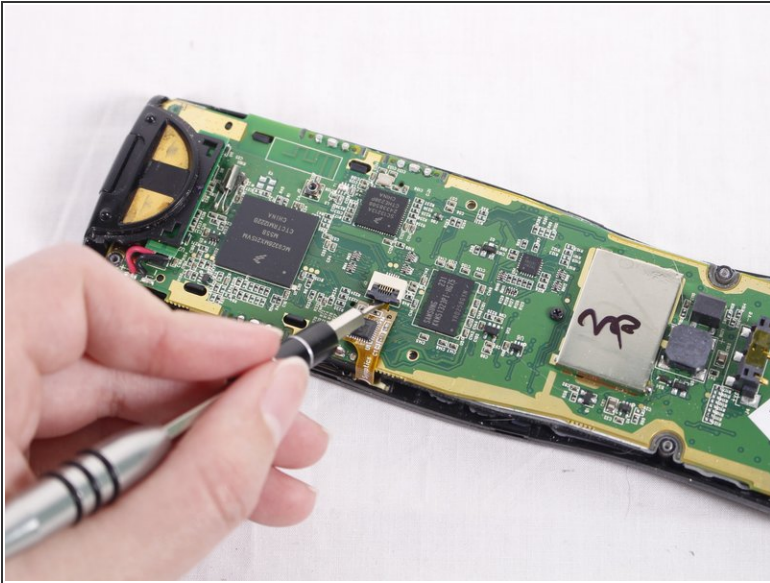
Step 7



- Pry the black, front face of the remote from the back silver part by inserting a credit card in between and sliding down.

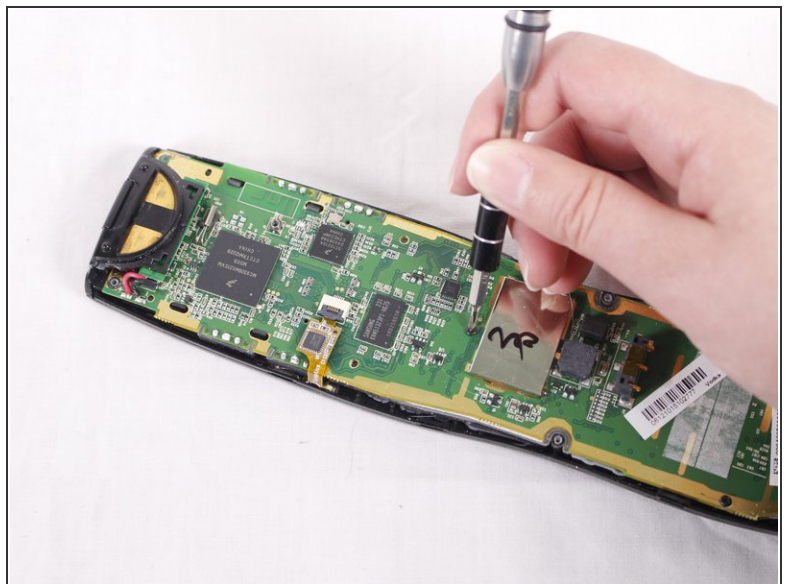
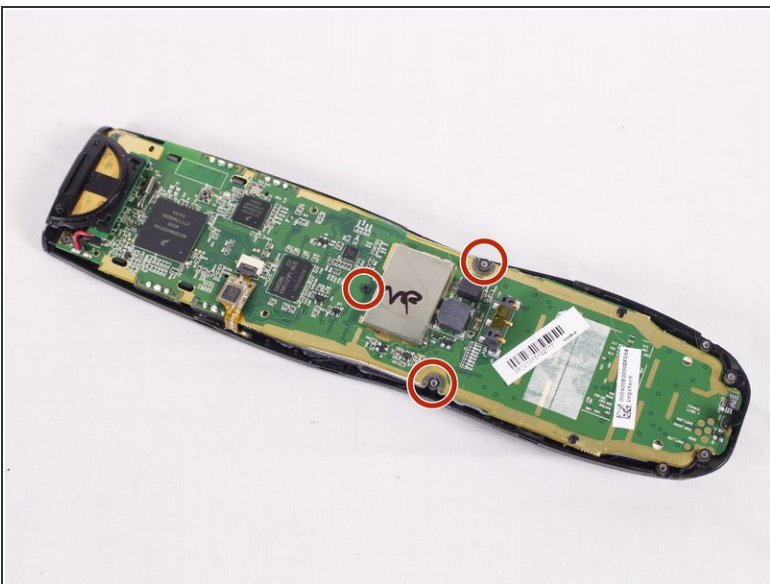
i Again, you may need to use a metal prying tool to get the separation started.

Step 8



- When you look at the circuit board, you should see a ribbon attaching the board to the plastic casing.
- A little lever is holding the ribbon in place. Lift the lever with your nail or a 2.5mm flat-head screwdriver. Move the ribbon away from the circuit board.

Step 9



- Using the Philips #0 screwdriver, remove the three 50mm screws from the circuit board.

Step 10



- Using your hands, carefully separate the motherboard from the rest of the remote.

Step 11 — Button Pad



- Peel off the button pads from the device frame.

To reassemble your device, follow these instructions in reverse order.