



# Logitech Harmony 900 Motherboard Replacement

How to remove and replace the Logitech Harmony 900 Motherboard.

Written By: John Adams





## TOOLS:

- [Credit Card / Plastic](#) (1)
  - [Tweezers](#) (1)
  - [Phillips #0 Screwdriver](#) (1)
  - [Flathead 3/32" or 2.5 mm Screwdriver](#) (1)
-

## Step 1 — Battery



- Press the oval shaped button on the lower back of the remote to release the battery cover.
- While pressing the button, remove the cover.

## Step 2



- Push the battery in, pull it up, and slide it out.

## Step 3 — Motherboard



- Using tweezers, peel off the sticker located under the battery cover to reveal two screws.

## Step 4



- Locate and unscrew the four 50mm screws using the Philips #0 screwdriver.

## Step 5



- Use a credit card to pry the black, plastic, back cover off of the device.
- ⓘ You may need to get the process started with a metal prying tool before you start using the credit card.

## Step 6



- Locate the three 50mm screws on the back of the remote and remove them using the Phillips #0 screwdriver.

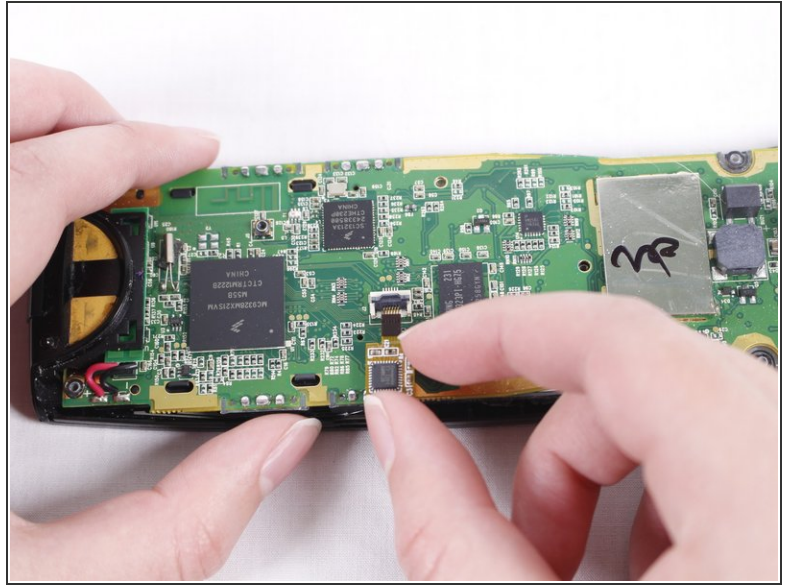
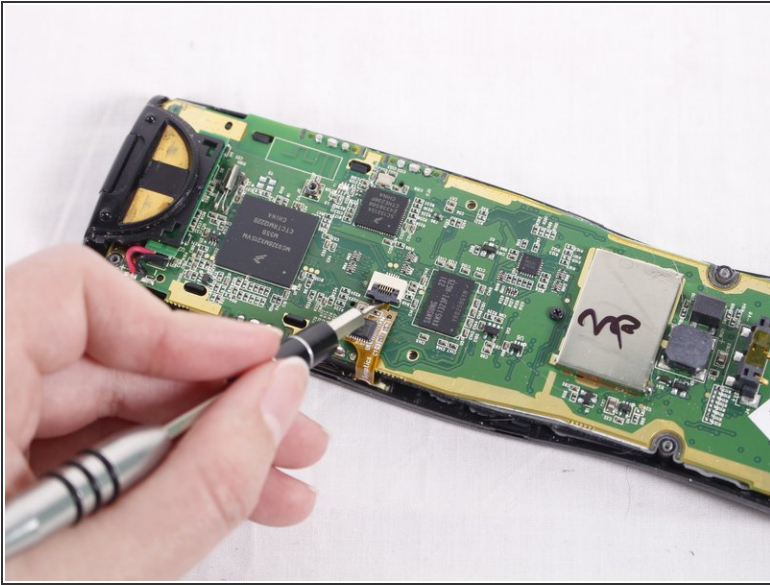


## Step 7



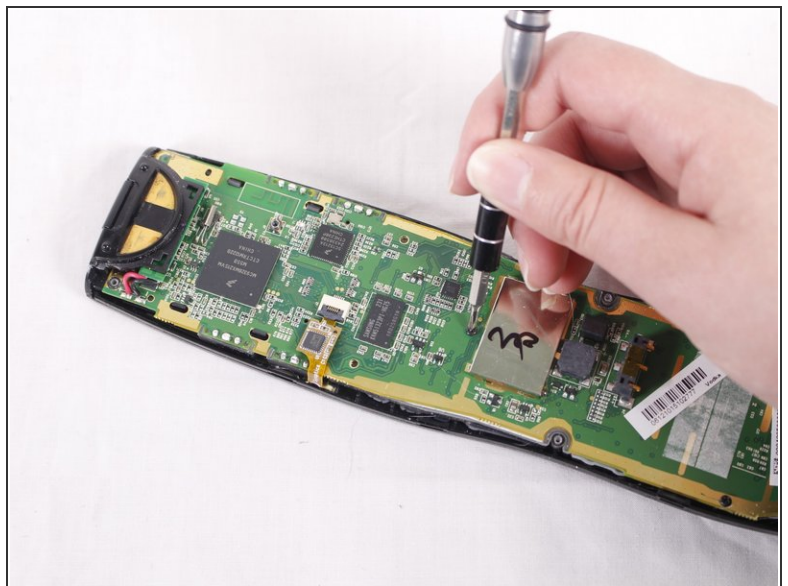
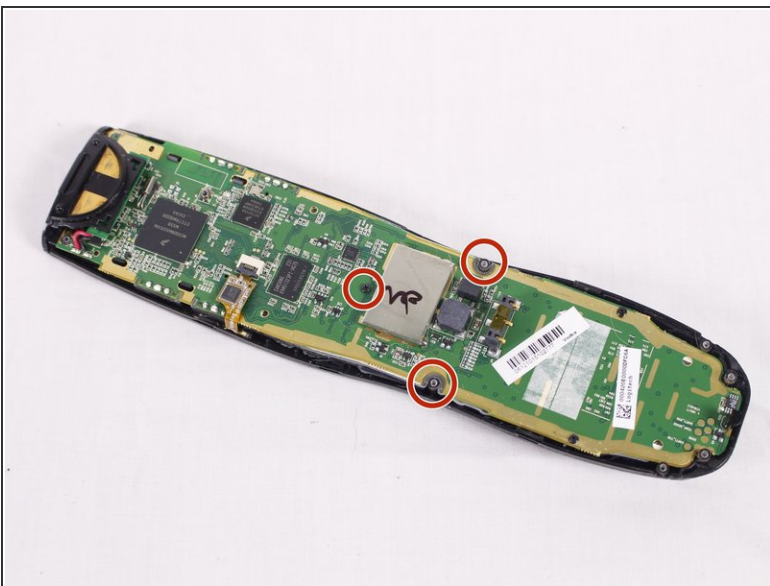
- Pry the black, front face of the remote from the back silver part by inserting a credit card in between and sliding down.
- ⓘ Again, you may need to use a metal prying tool to get the separation started.

## Step 8



- When you look at the circuit board, you should see a ribbon attaching the board to the plastic casing.
- A little lever is holding the ribbon in place. Lift the lever with your nail or a 2.5mm flat-head screwdriver. Move the ribbon away from the circuit board.

## Step 9



- Using the Philips #0 screwdriver, remove the three 50mm screws from the circuit board.

## Step 10



- Using your hands, carefully separate the motherboard from the rest of the remote.

To reassemble, follow the steps in reverse order.