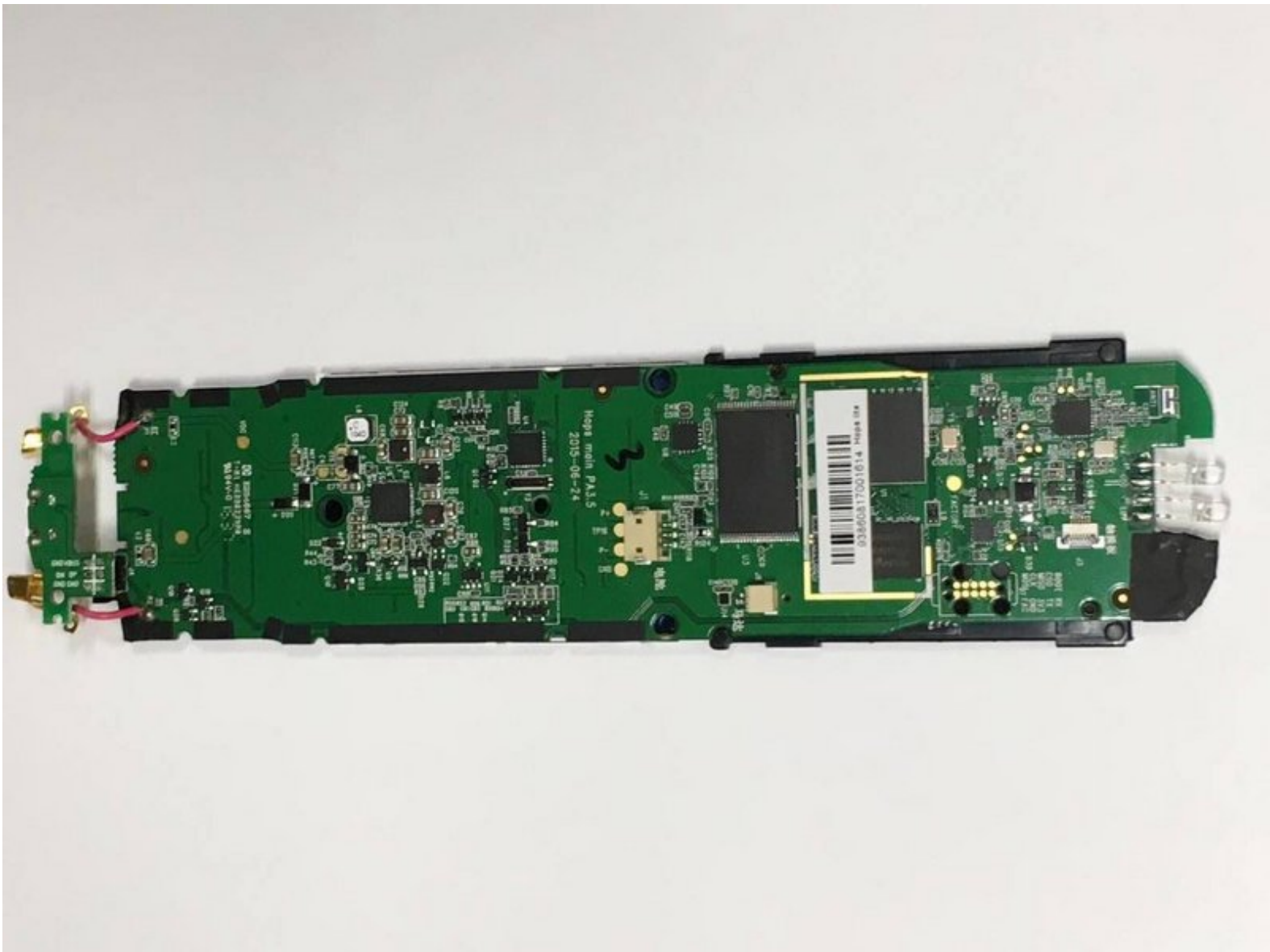




# Logitech Harmony 950 Motherboard Replacement

Written By: Blake Sanborn





## TOOLS:

- [iFixit Opening Tools](#) (1)
- [Phillips #0 Screwdriver](#) (1)
- [Tweezers](#) (1)
- [ESD Safe Tweezers Blunt Nose](#) (1)

## Step 1 — Battery



- ⓘ Make sure the remote control is powered off before starting.
- Use the Opening Tool to open the port cover at the bottom of the remote control.
- Bend the cover back to gain easy access to the screws.

## Step 2



- Use the Phillips #0 Screwdriver to remove the (2) two 6mm screws.
- Pull the bottom cover off of the remote control.

## Step 3



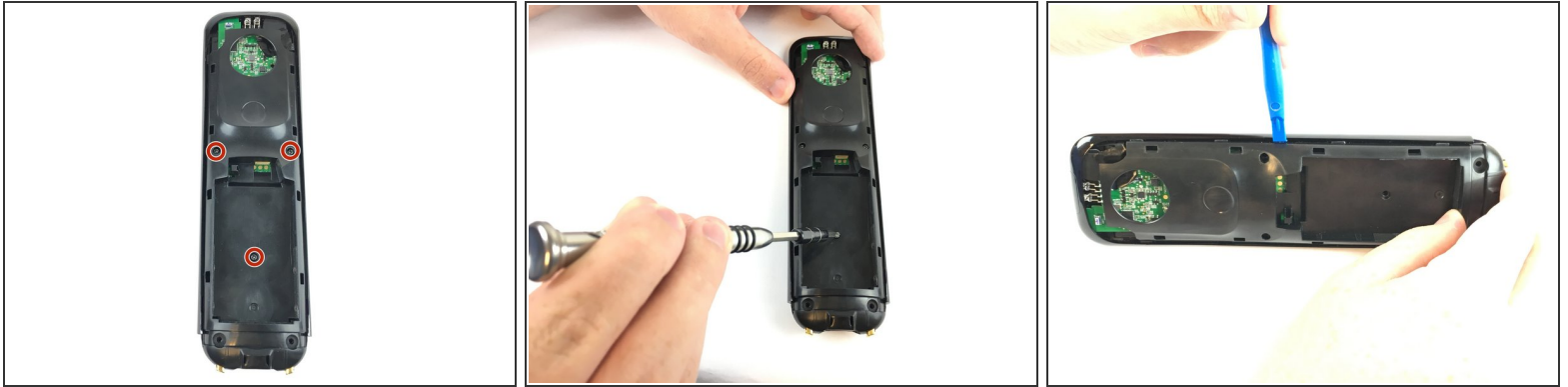
- Use the Phillips #0 Screwdriver to remove the (2) two 6mm screws.
- There should be a gap on each side to fit the Opening Tool. Use the Opening Tool to open the back cover (Soft Touch cover) using the gap.

## Step 4



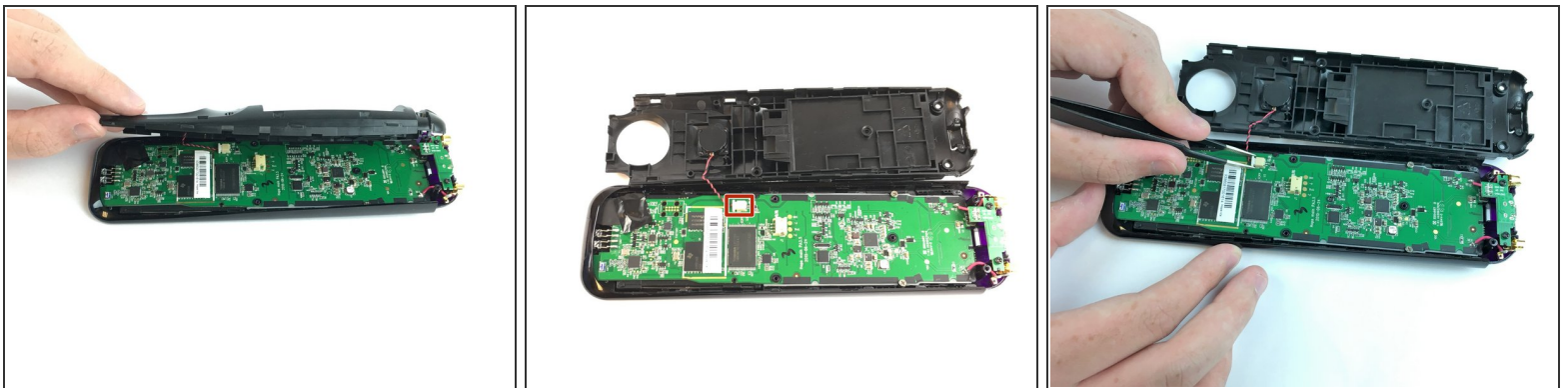
- Use the Opening Tool to lift the battery out of the case.
  - Gently pull the cable out of the socket to unplug the battery.
- ⚠ Be careful not to damage any part of the remote when pulling the cable out.

## Step 5 — Motherboard



- Use the Phillips #0 screwdriver to remove the (3) three 6mm screws.
  - Push the opening tool into the gap along the side of the remote, then slide it across until you hear clicking sounds.
- i** You need to repeat this process for both sides of the remote.

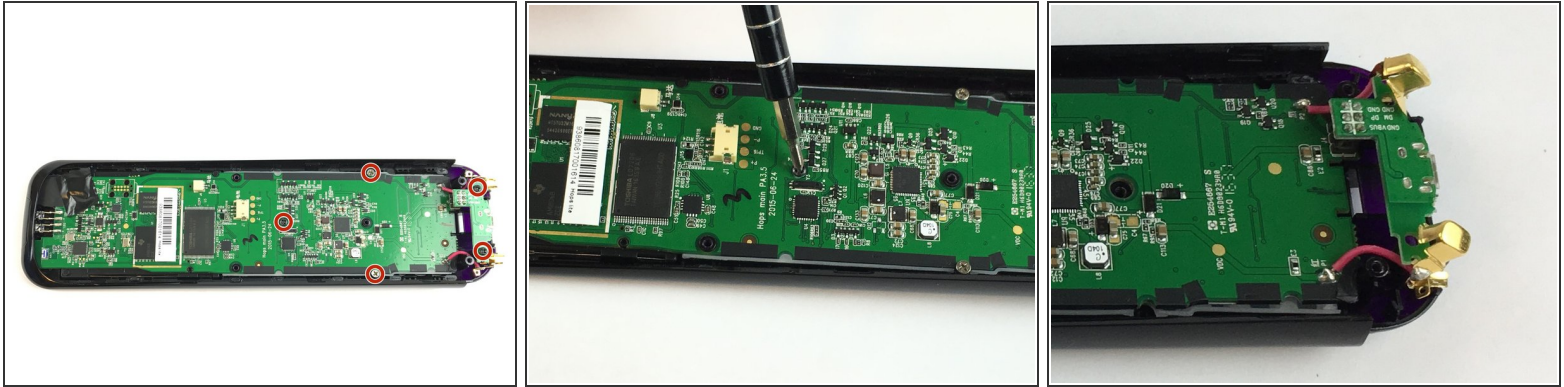
## Step 6



- !** Carefully remove the back cover and place it next to the remote. Be careful not to detach the wire during this process.
- Use the Angled Tweezers to carefully pull the white cable end off of the remote and disconnect it.



## Step 7



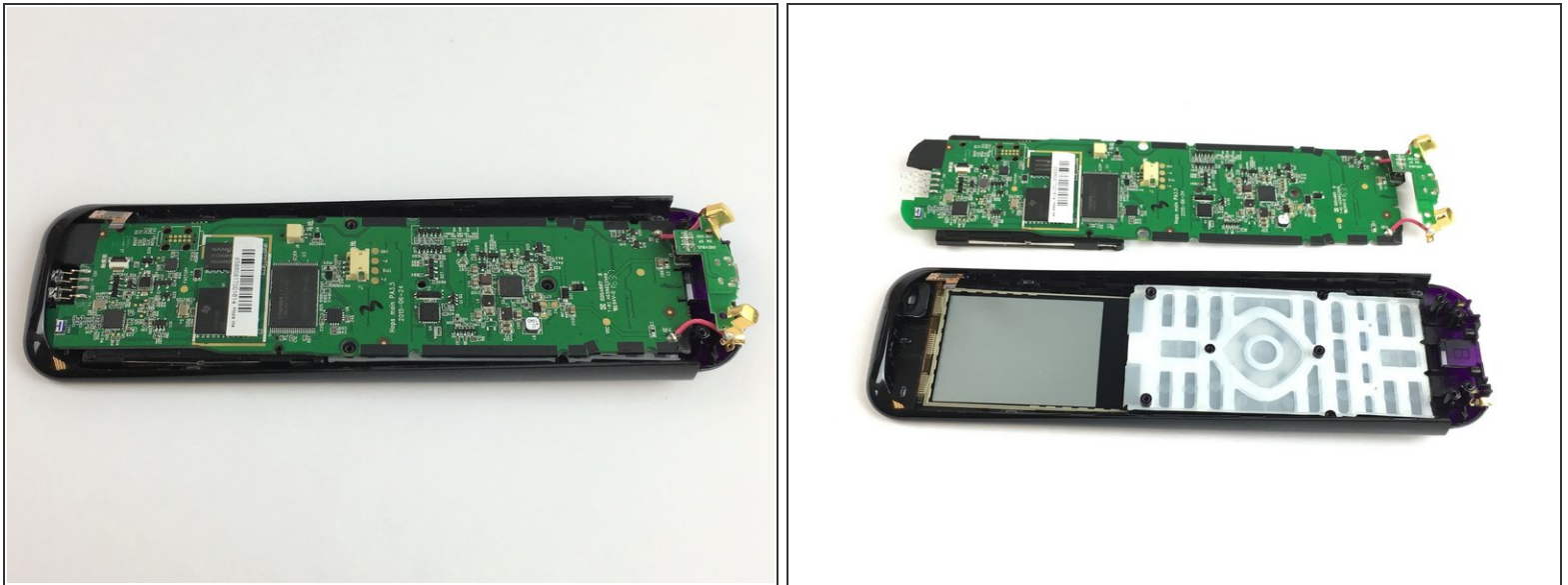
- Use the Phillips #0 screwdriver to remove the (5) five 6mm screws.
- ⚠ Be careful not to detach the pink wires when removing the gold charging conductors.

## Step 8



- Remove the black tape to access the cable underneath.
- Use the Angled Tweezers to lift the black lock.
- Slide the yellow cable to disconnect it from the circuit board.

## Step 9



- Pull the circuit board off of the remote from the bottom, and lift up to detach it from the cover.

To reassemble your device, follow these instructions in reverse order.