



Logitech Harmony Companion Remote Motherboard Replacement

This guide will show you how to replace the motherboard in your Companion remote.

Written By: Cassidy Wardlow



INTRODUCTION

The motherboard is a central part in the operation of your Companion remote. If your remote is not working after adjusting the settings and replacing the battery, you may need to replace the motherboard. All you need for this guide is a plastic opening tool and a Phillips #0 screwdriver.



TOOLS:

- [iFixit Opening Tools](#) (1)
 - [Phillips #0 Screwdriver](#) (1)
-

Step 1 — Remote Battery



- Hold the remote with the Logitech label toward you.

Step 2



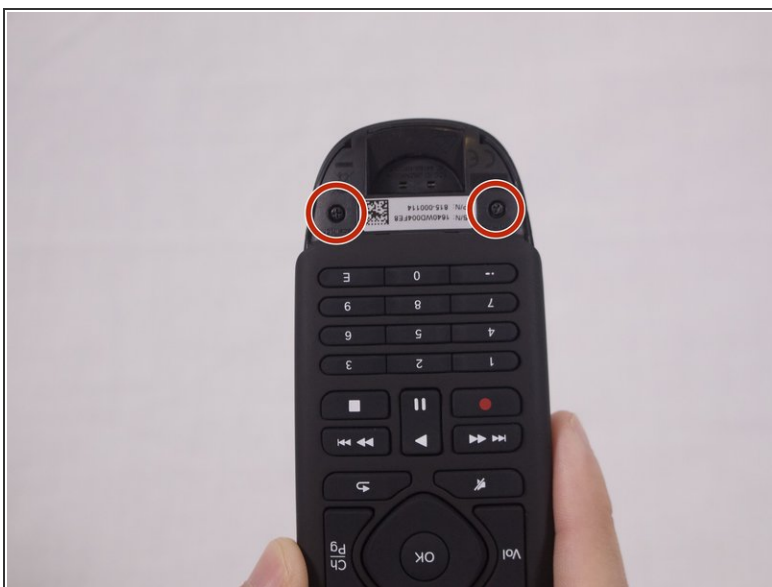
- Push the battery cover upward.

Step 3



- Use your finger to lift the battery out of the compartment.
- When the battery has lifted, push it up to remove it.

Step 4 — Remote Motherboard



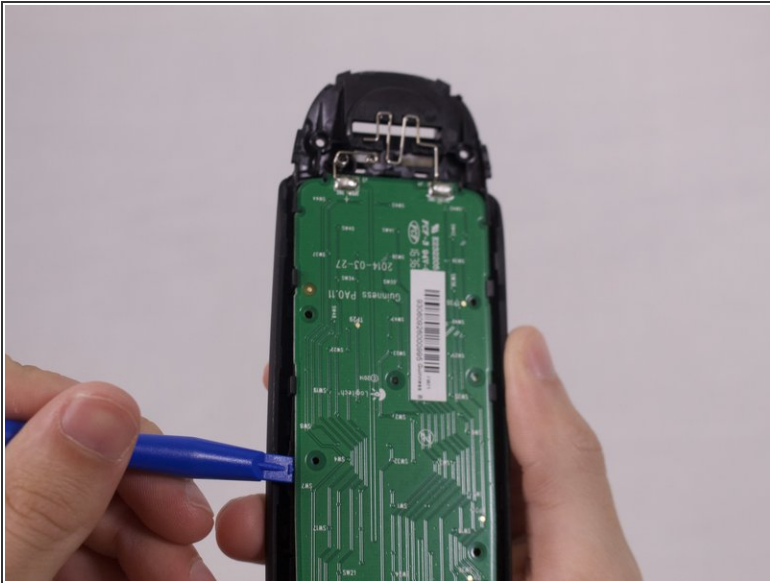
- Remove the two 5.0 mm Phillips #0 screws.

Step 5



- Use the plastic opening tool to pry open the back cover of the remote.
- ⓘ It is recommended to have the point of the opening tool facing the back of the remote.
- Insert the opening tool on each side of the bottom of the remote, and pull up until you hear the cover click open.
- Pry the back cover off by sliding the plastic opening tool down each side.

Step 6



- Use the plastic opening tool to remove the motherboard.

To reassemble your device, follow these instructions in reverse order.