



# Logitech Harmony Hub Teardown

Give a short summary.

Written By: November Five



---

# INTRODUCTION

Outline what you are going to teach someone how to do.

---



## TOOLS:

- [Precision Utility Knife](#) (1)
  - [Phillips #0 Screwdriver](#) (1)
-

## Step 1 — Unboxing



- Powercord with a micro USB connector
- European plug adapter
- American plug adapter
- Harmony Hub
- Micro USB cable
- IR mini blaster

## Step 2 — Finding the screws



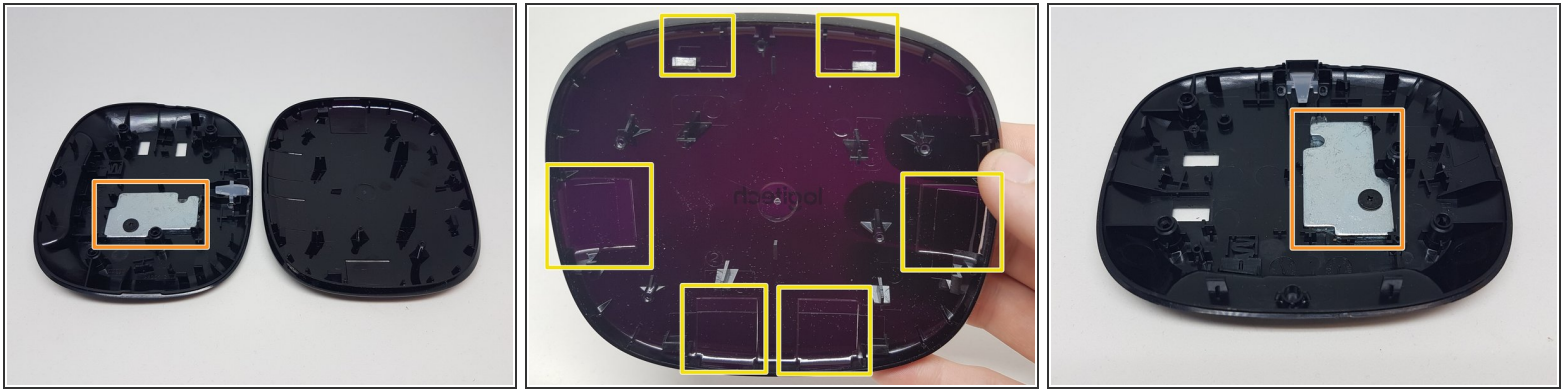
- Since we didn't find any screws we expected them to be under the soft foot pads.
- We easily removed them with a utility knife
- Now we can see 4 screws and 2 openings to the PCB.
- I wondered what they could be but my guess is that they're used to test the PCB.

## Step 3 — Opening the hub



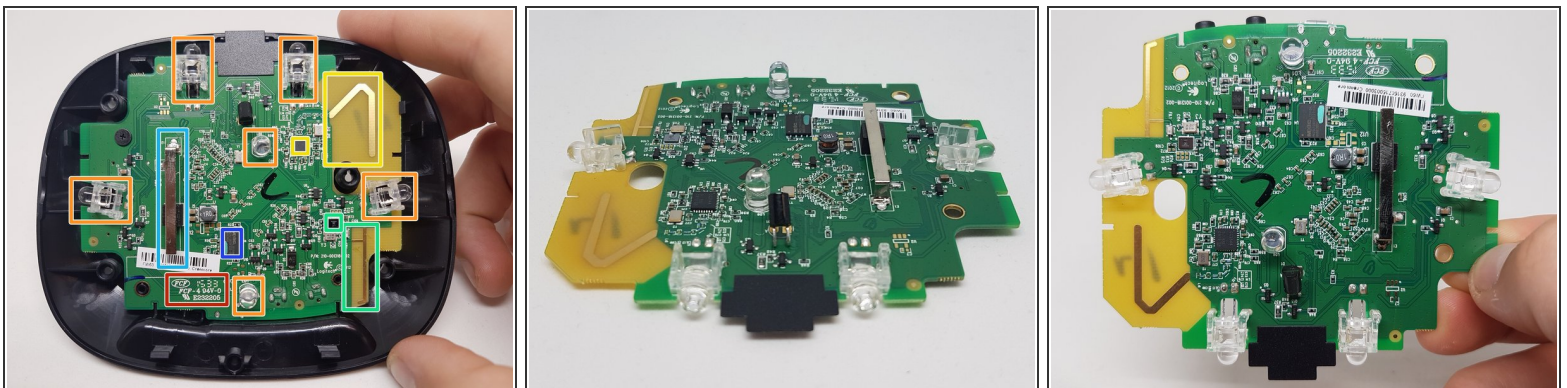
- The case opens up easily when using a utility knife around the sides
- This is a cover paper to make sure the status LED doesn't shine in the rest of the casing but just to the front

## Step 4 — Casing



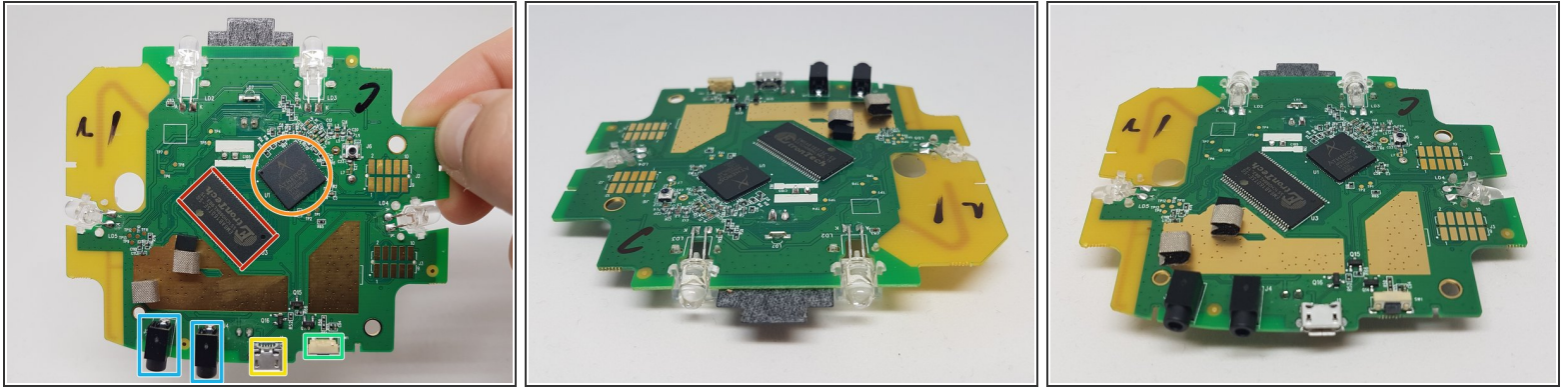
- Inside the top case we find a load to give the product a little more weight
- As you can see the top case is made a little thinner on the places where an IR led is present

## Step 5 — PCB Top



- PCB was manufactured by a Chinese company called FCF
- There are 6 IR leds spread over the PCB
- [CC2544](#) SoC 2.4-GHz RF Transceiver and antenna
- [CSR8811](#) bluetooth chip and antenna
- WiFi antenna from the [AR9331](#) on the other side of the pcb
- [MX25L12835F](#) 128Mbits serial Flash memory

## Step 6 — PCB Bottom



- [EM6AB160TSE-5G](#) 512 Mbits SDRAM
- [AR9331](#) 2.4 GHz 802.11b/g/n SoC for AP and Router Platforms
- Micro USB (data and power) - Can be used to extend this hub with a [Harmony Home Hub Extender](#)
- Reset/Pair button
- 2x IR mini blaster ports (2.5mm)