



Logitech Harmony One Teardown

If you need to open your logitech harmony one, to clean it or remove a stuck battery, this will show you how to get it done without damaging the touch screen.

Written By: euchre





TOOLS:

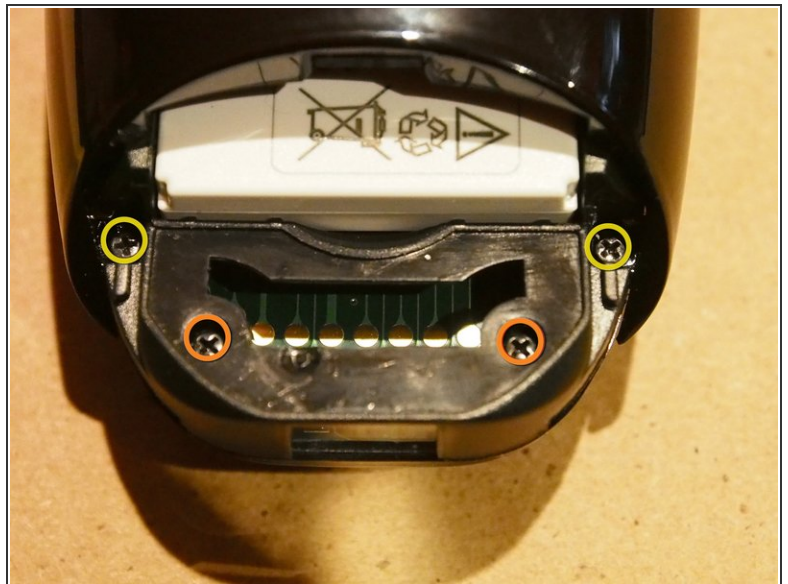
- [Phillips #0 Screwdriver](#) (1)
 - [iFixit Opening Tools](#) (1)
 - [Razor Blade](#) (1)
-

Step 1 — Logitech Harmony One Teardown



- The Logitech Harmony One is a fantastic universal remote. Its well designed case, heft and button placement make it an ideal remote for a complex media setup. While the unit is well sealed against spills if you get something sticky in the buttons it will make it hard to use!

Step 2



- To start open the battery compartment and remove the battery.
- Using a razor blade or other fine pick carefully remove the logitech sticker to reveal the 2 hidden screws.
- Remove the 4 philips screws.

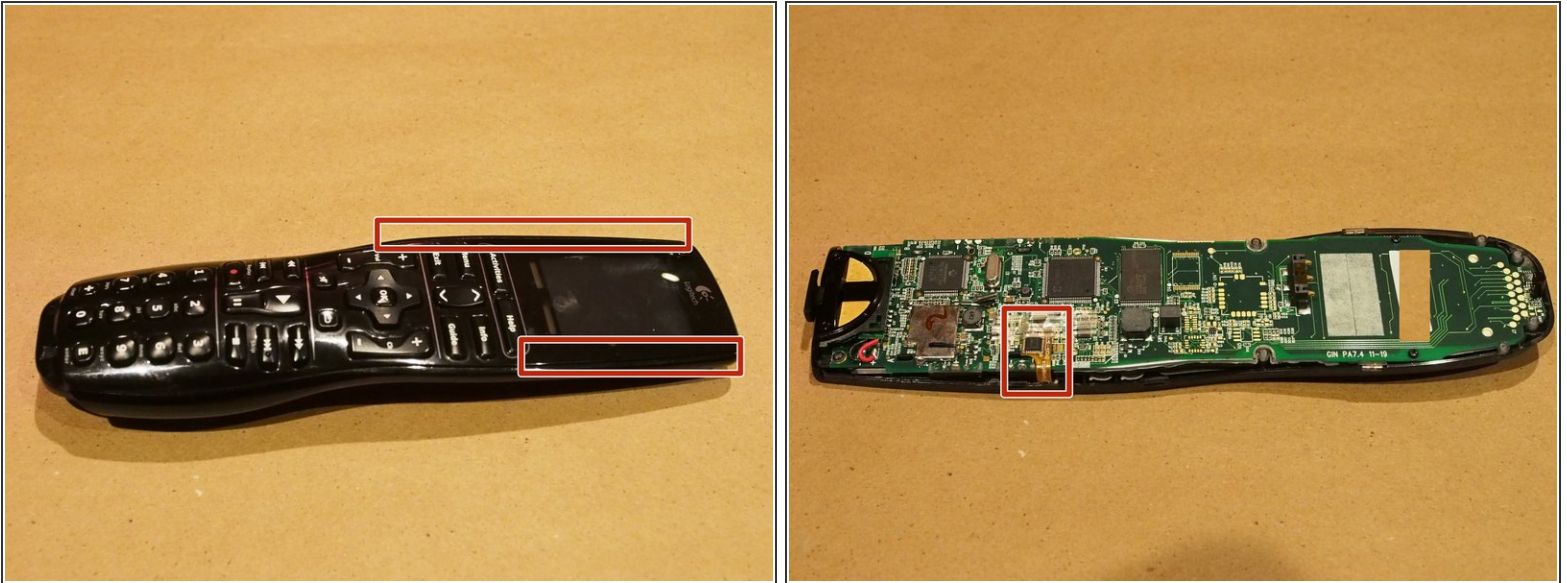
This document was generated on 2019-10-08 04:42:39 PM (MST).

Step 3



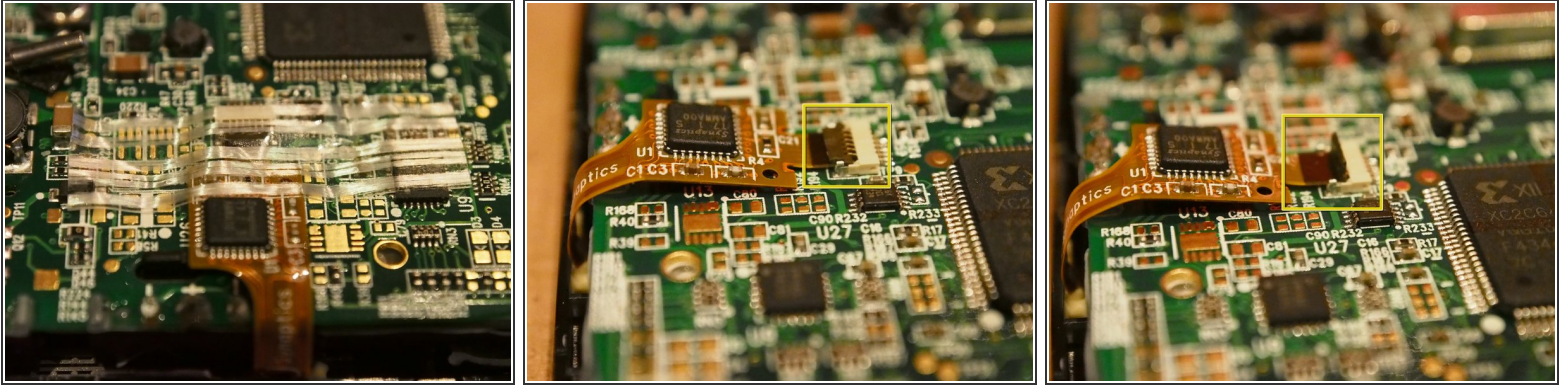
- Remove the rubberized grip area by gently prying it directly away from the back starting with the end closest to the front of the remote.
- ⓘ NOTE: There is some double sided sticky tape towards the rear, but it comes apart easily.
- Now remove the 3 remaining philips screws.

Step 4



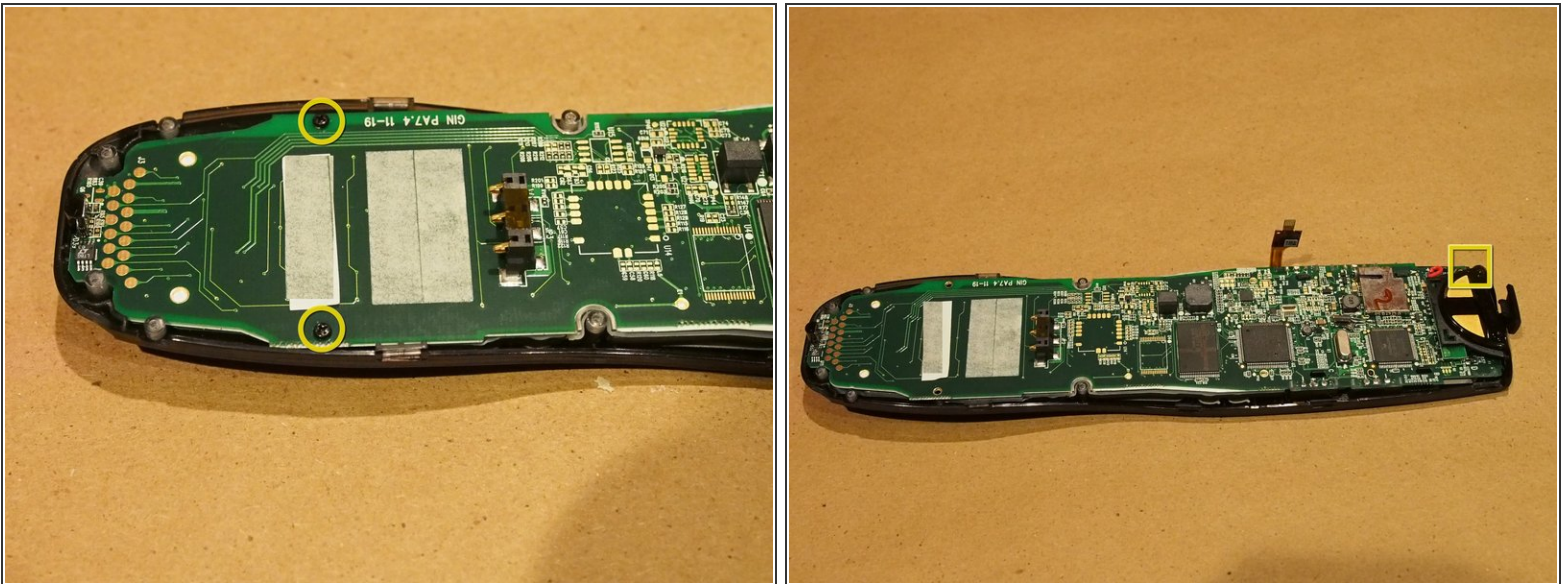
- Release the tabs securing the case together by inserting a thin, rigid opening tool near the center of the remote (near the mute and back buttons) and following the gap on the front side of the remote.
 - ⚠ Be careful not to damage the ribbon cable on the left side of the remote while removing the case.
 - ℹ The backing should separate from the keypad side with little resistance.
 - Hold the charging contacts, LCD display and front cover together as you remove the backing.
 - ⚠ Only remove the backing. The charging contacts, LCD display are still attached together.
 - ⚠ Do not separate the front cover from the LCD display; otherwise, the ribbon cable may separate from the touch screen contacts.

Step 5



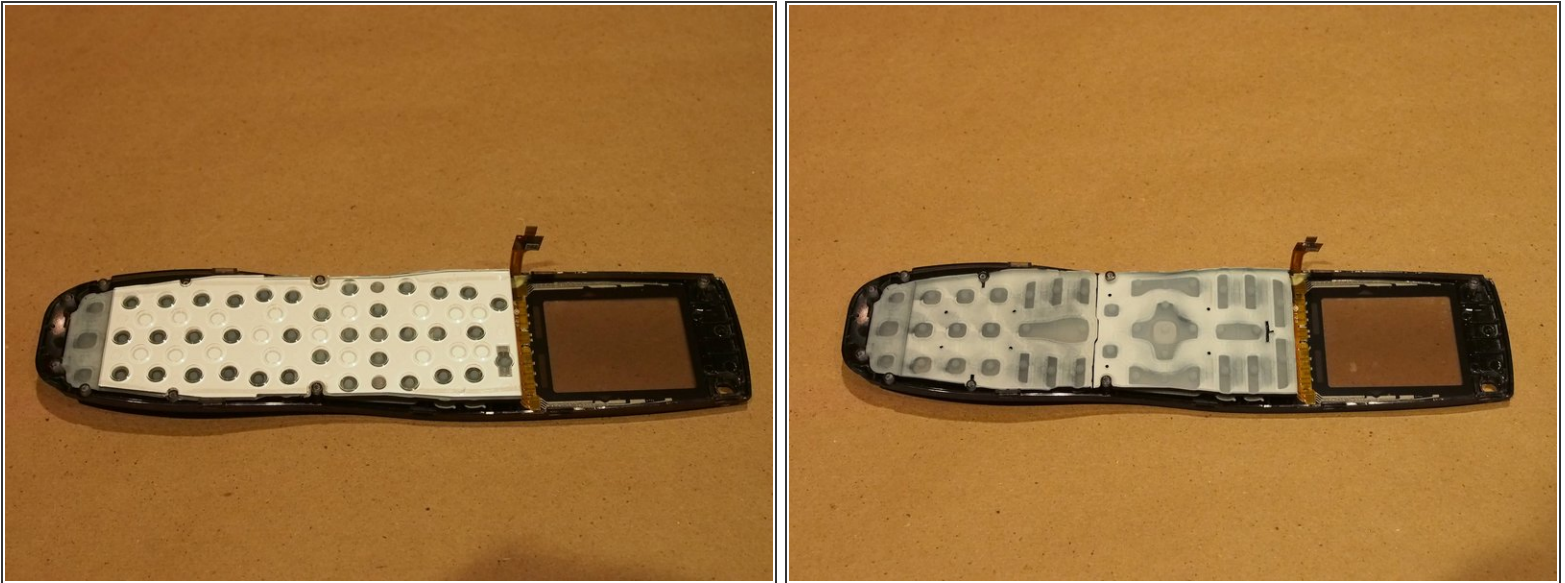
- Remove the tape (if present) securing the ribbon cable connector
- Then flip up the release and pull the ribbon cable out.

Step 6



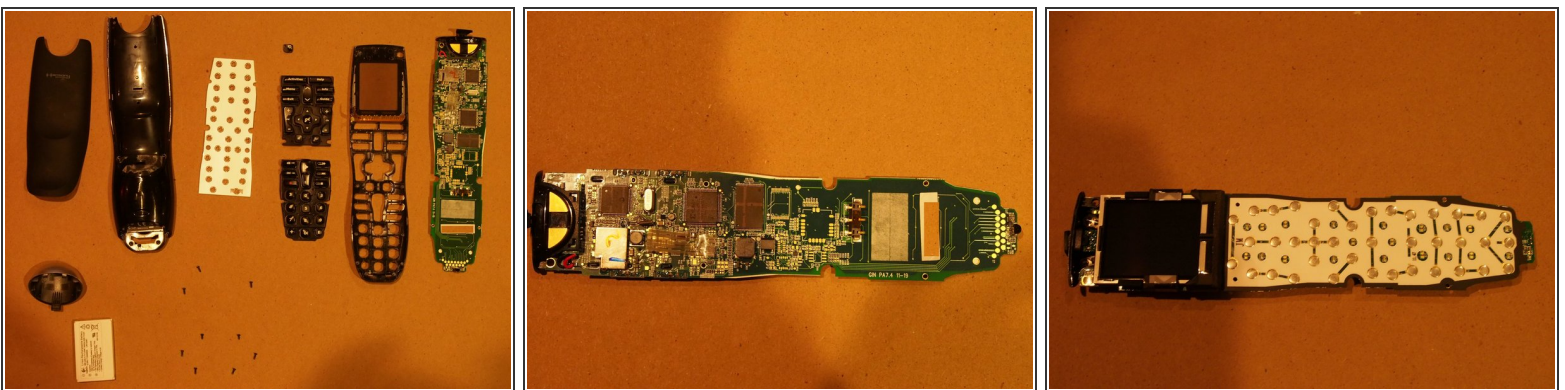
- Now remove the remaining two philips screws holding the logic board down
 - Pull the logic board straight back off the keypad.
- (i) NOTE:** The top left side is keyed into the casing so take extra care when removing the board,
- (i)** During reassembly, hold the battery against the battery contacts and ensure the touchscreen still works.

Step 7



- Underneath the logic board you will find a hard plastic spacer covering the rubber keypad.
- NOTE: when replacing the spacer the recessed "cone" side goes towards the rubber keypad.
- The keypad comes out in two sections.

Step 8



- Here are all the parts the the Logitech Harmony One remote

To reassemble your device, follow these instructions in reverse order.