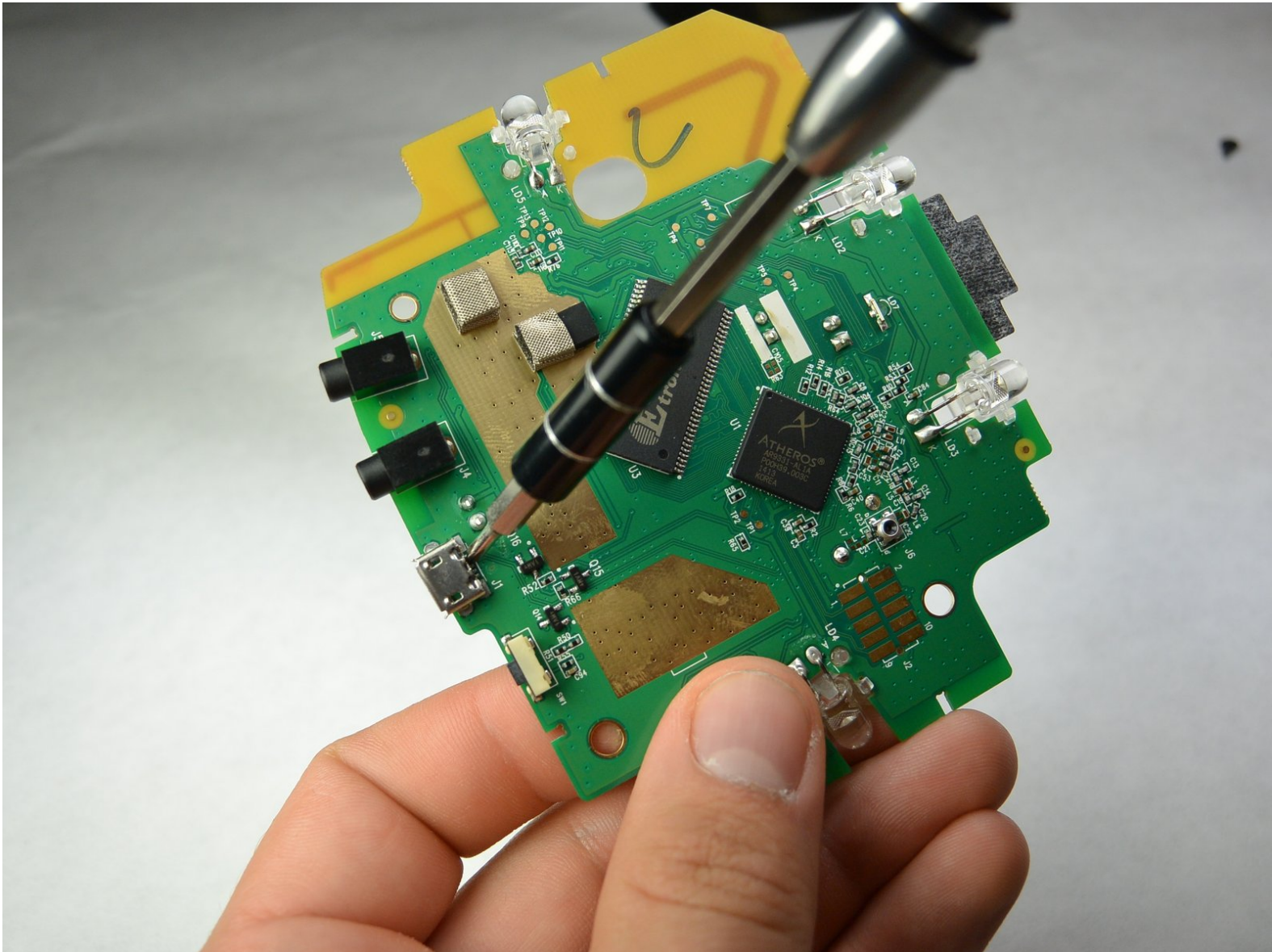




Logitech Harmony Smart Control Charging Port Replacement

This is a guide that describes the steps on how to replace the charging port in the harmony hub.

Written By: Josh Hendricks



INTRODUCTION

This guide requires soldering, for soldering guide click below.

[Soldering Guide](#)



TOOLS:

- [iFixit Opening Tools](#) (1)
- [Phillips #00 Screwdriver](#) (1)
- [Soldering Iron](#) (1)



PARTS:

- [Solder](#) (1)

Step 1 — Charging Port



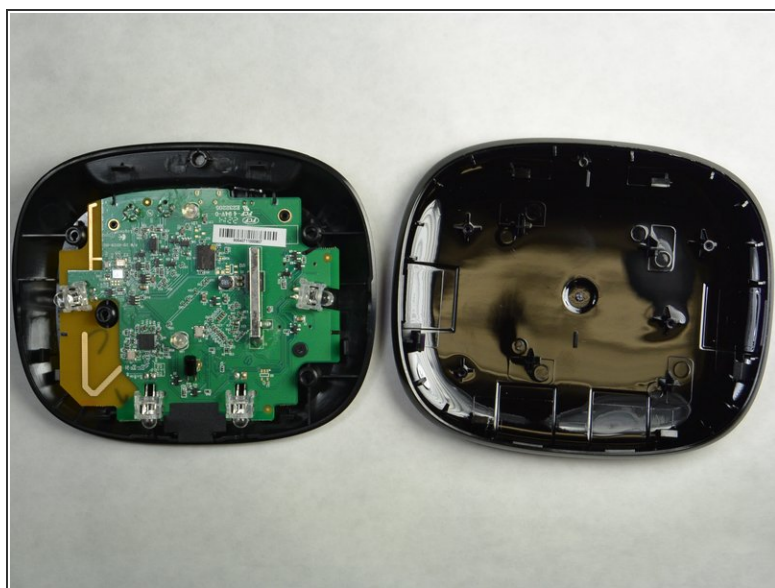
- Use the plastic opening tool to lift up the rubber pad.
- With your fingers, pull back the rubber pad. This will expose the screw holes on the bottom of the device.
- Repeat the step above for the second rubber pad on the bottom of the hub.

Step 2



- Using the PH00 bit, remove the four 6mm Phillips screws

Step 3



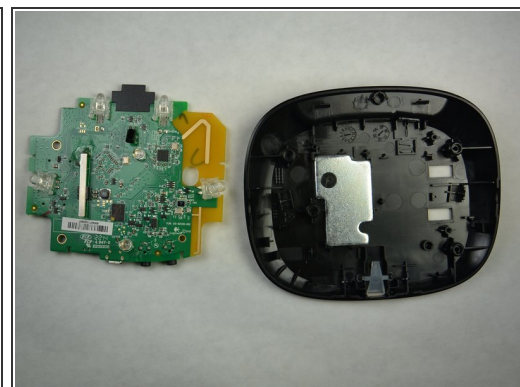
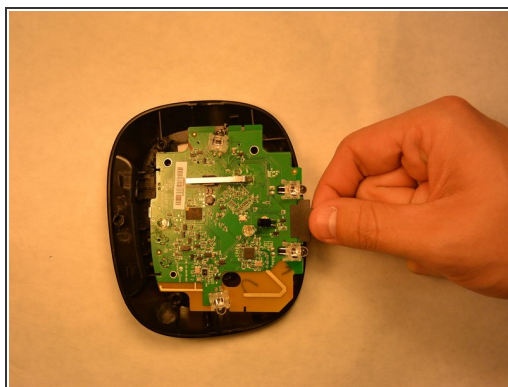
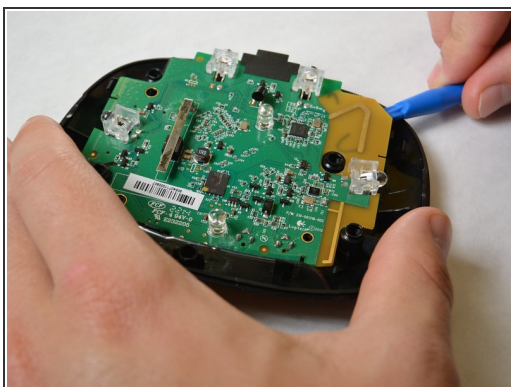
- Use the plastic opening tool to pry open and separate the pieces of plastic from each other.

Step 4



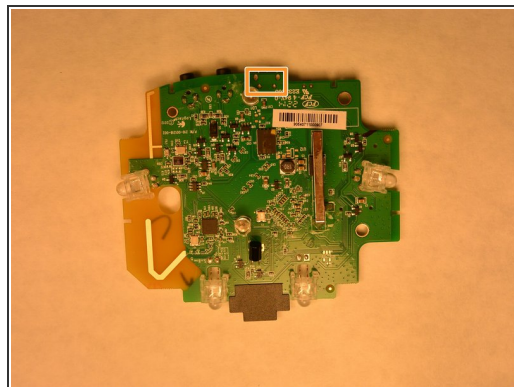
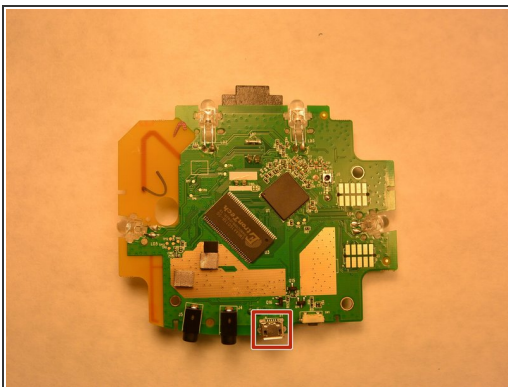
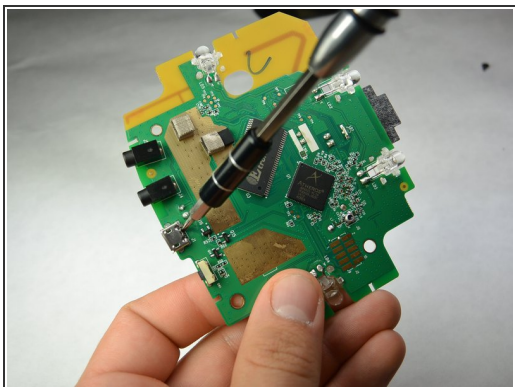
- Using the PH00 bit, remove the three 4mm Phillips screws.

Step 5



- Starting at the yellow corner, use a plastic opening tool to pry the circuit board from the housing.

Step 6



- Locate the defective charging port.
- Turn the circuit board over to expose the charging solder.
- Using a soldering iron, remove the solder and the charging port. Install a new charging port and solder.

To reassemble your device, follow these instructions in reverse order.