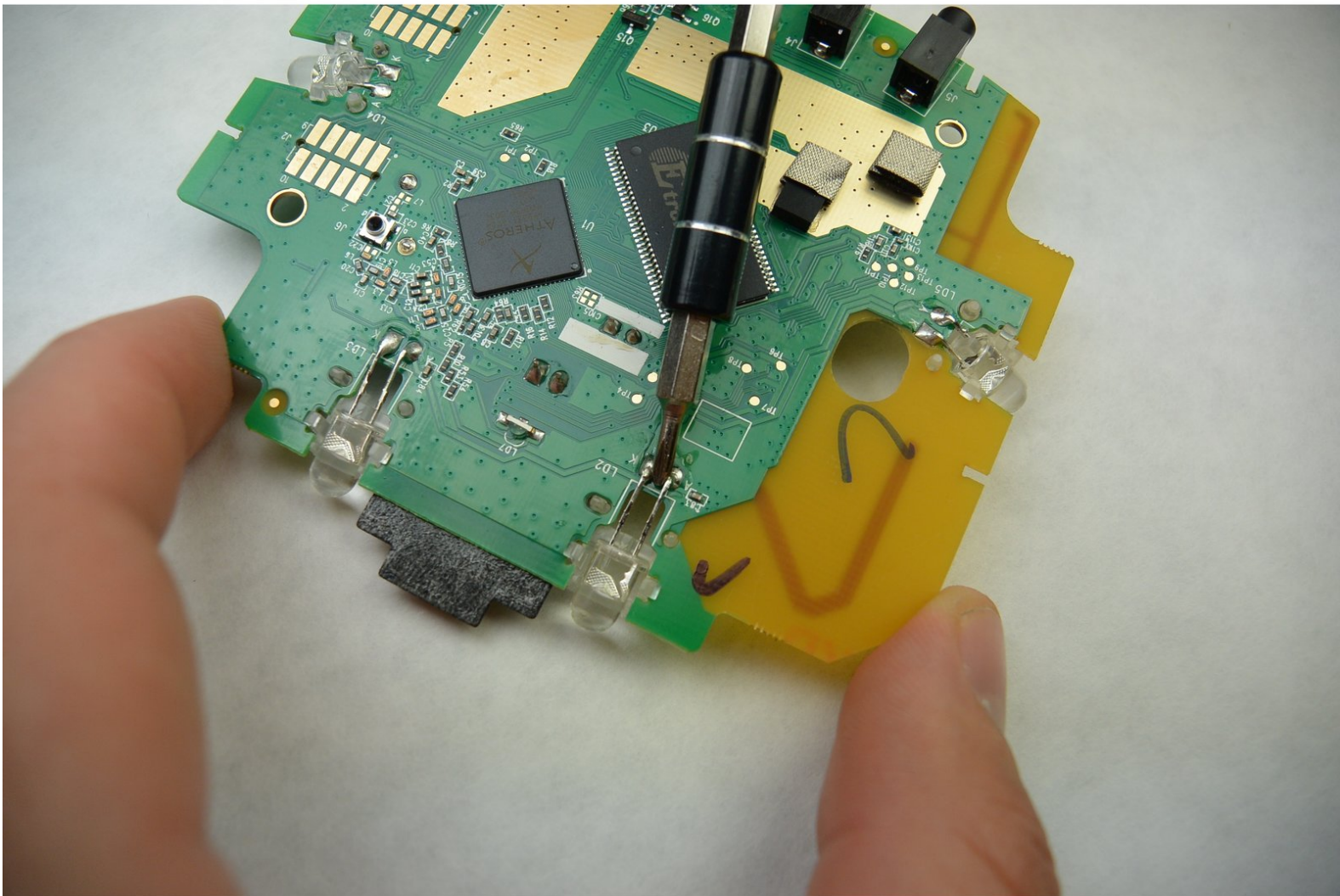




Logitech Harmony Smart Control Hub Light Bulb Replacement

Disassemble Logitech Harmony Smart Control home hub to replace a burned out or defective light bulb.

Written By: Josh Hendricks



INTRODUCTION

Learn how to disassemble the Logitech Harmony Smart Control hub, remove a burned out or defective light bulb or bulb(s), and replace it with new one(s).

This repair requires soldering. View the soldering guide at:

[Soldering Guide](#)



TOOLS:

- [Phillips #00 Screwdriver](#) (1)
- [Soldering Iron](#) (1)
- [Spudger](#) (1)



PARTS:

- [Solder](#) (1)

Step 1 — Light Bulb



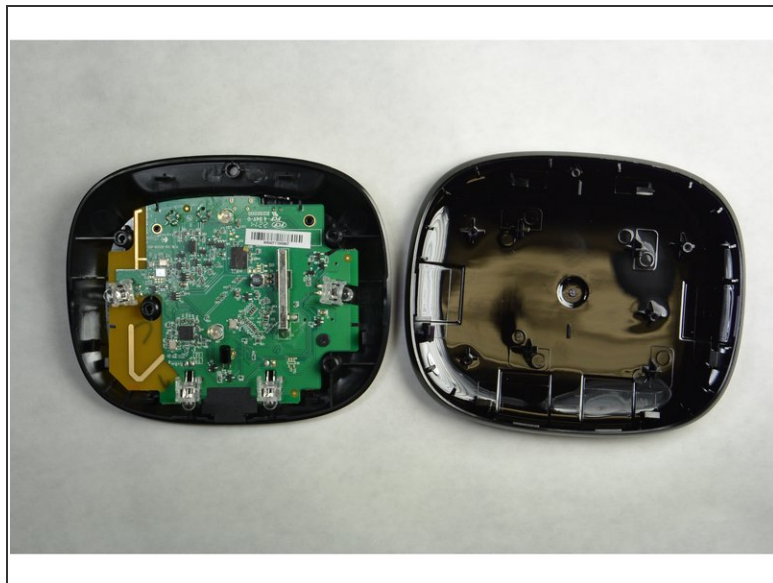
- Use a spudger to lift up one of the rubber pads on the bottom of the hub.
- Pull back the rubber pad and remove it. This will expose the screws on the bottom of the device.
- Repeat for the second rubber pad.

Step 2



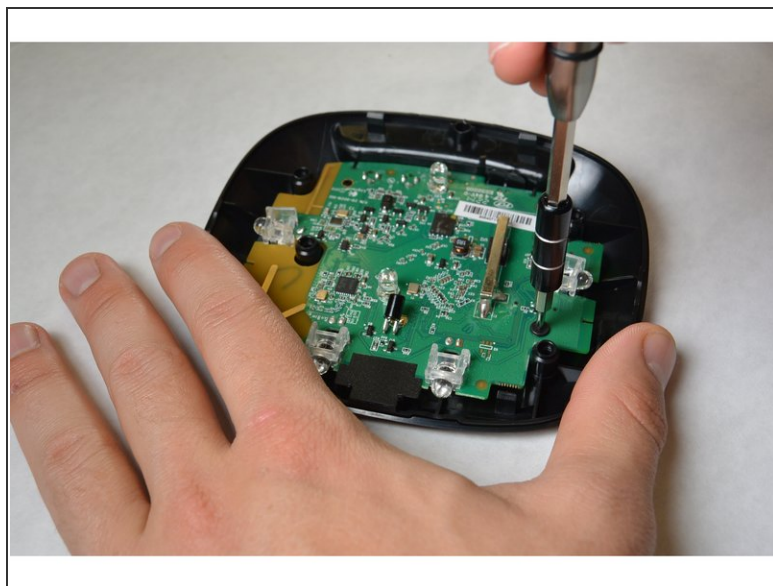
- Use a PH00 screwdriver bit to remove the four 6mm Phillips screws on the bottom of the device.

Step 3



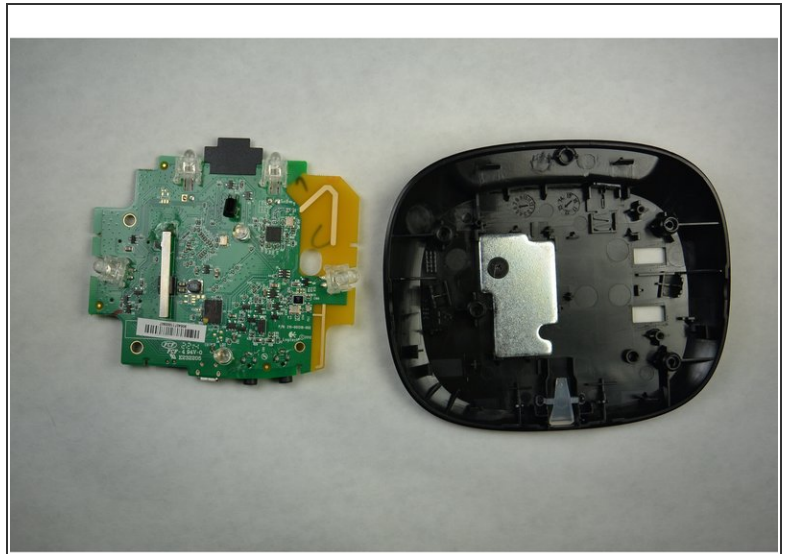
- Use a spudger to separate the top and bottom pieces of the device.

Step 4



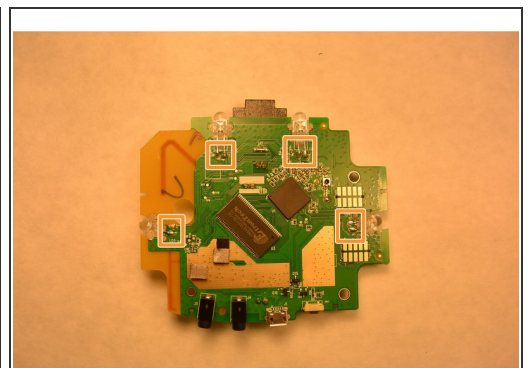
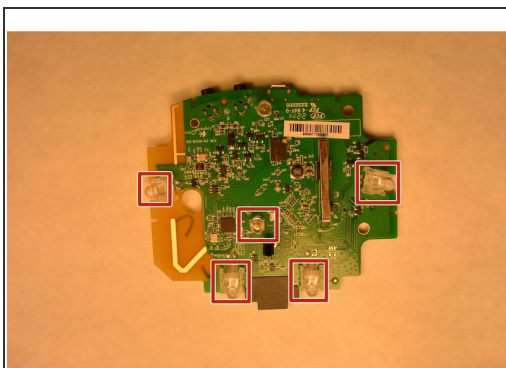
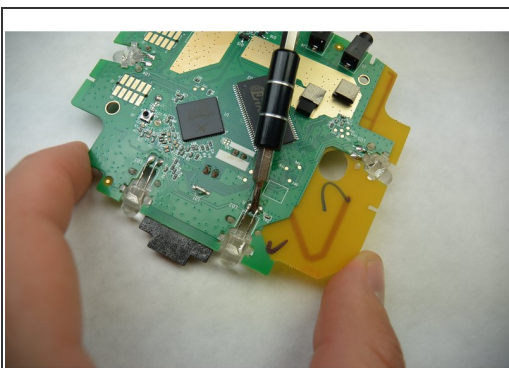
- Use the PH00 screwdriver bit to unscrew the three 4mm Phillips screws on the control board.

Step 5



- Place the end of the opening tool under the yellow corner of the circuit board as shown.
- Gently push upward to pry the board from its housing.

Step 6



- Determine which of the five bulbs are defective.
- Turn the board over to expose the bulb solder.
- Using a soldering iron, remove the solder and bulb. Replace with a new bulb and re-solder.

To reassemble your device, follow these instructions in reverse order.

This document was generated on 2019-09-28 07:26:06 AM (MST).

