



# Logitech Harmony Smart Keyboard On/Off Switch Replacement

This will instruct you to remove and replace the On/Off Switch for the Logitech Harmony Smart Keyboard.

Written By: Hayley Nichols



## INTRODUCTION

This is a replacement guide for the on/off switch on the Logitech Harmony Smart Keyboard.

The on/off switch, or power switch, powers the keyboard on and off. The on/off switch appears green when powered on, and appears red when powered off.

---

### TOOLS:

- [Phillips #1 Screwdriver](#) (1)
  - [Spudger](#) (1)
-

## Step 1 — Back Panel



- Turn keyboard over to the backside.

## Step 2



- Press and slide up on the upper battery latch, using both thumbs.

### Step 3



- Remove the two AA batteries and set them aside.

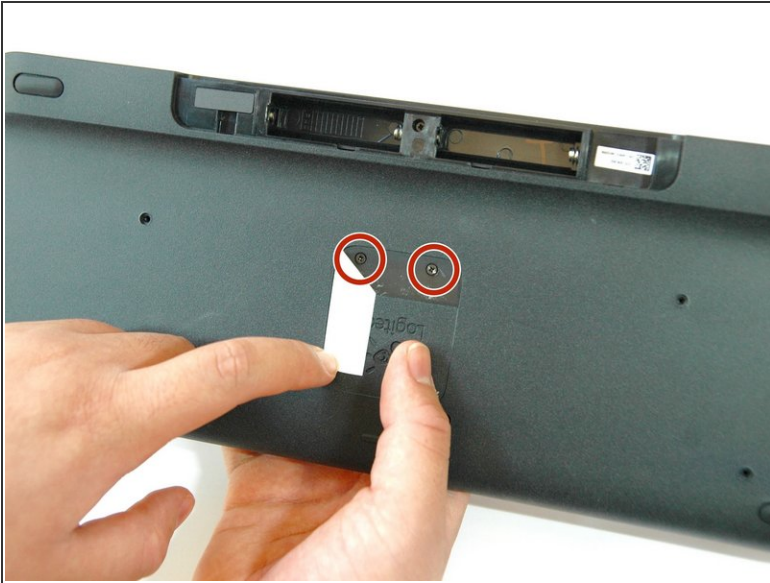
### Step 4



- Unscrew all five 4.0 mm screws, using Phillips #1 screwdriver.

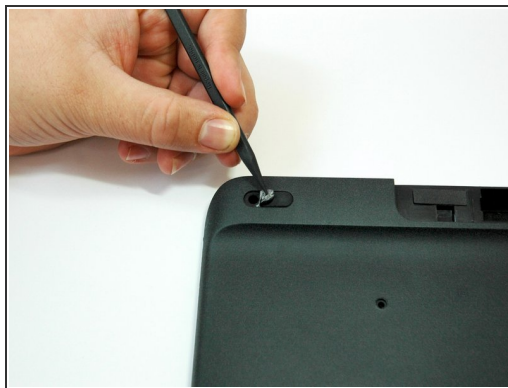


## Step 5



- Peel off the center sticker to reveal two hidden 4.0 mm screws.
- Unscrew these two screws with a Phillips #1 screwdriver.

## Step 6



- Lift both top left and top right rubber stickers halfway, using the sharp end of the plastic spudger.
- Unscrew a total of two 4.0 mm screws, under the rubber stickers, using a Phillips #1 screwdriver.

## Step 7



- Unscrew the top center 4.0 mm screw, in the battery compartment, using the Phillips #1 screwdriver.

**i** Now, you should have a total of ten 4.0 mm screws set aside.

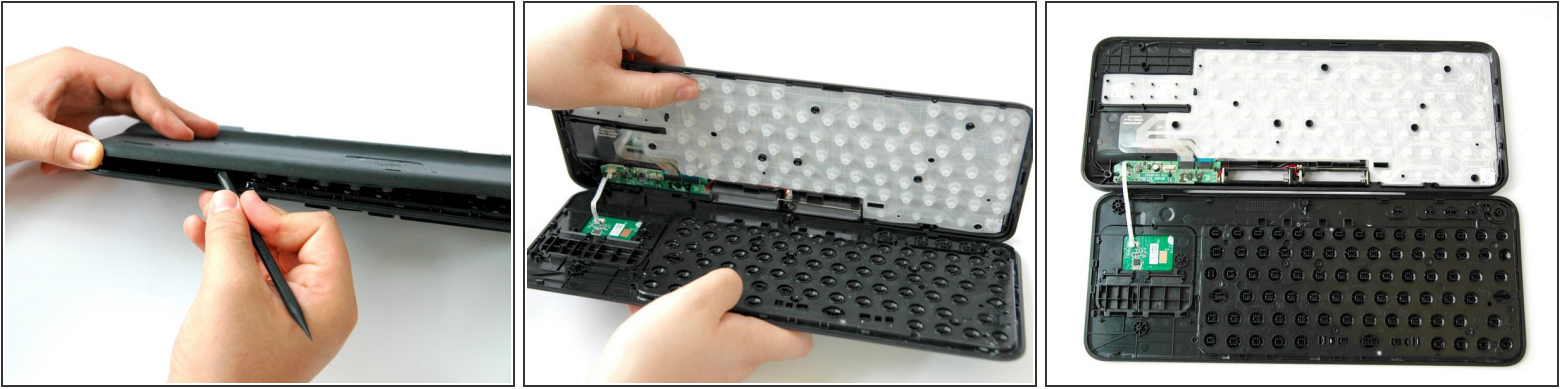
## Step 8



- Wedge the flat end of the spudger between the back panel and front panel.
- Slide the flat end of the spudger from right to left to pry the two panels apart.

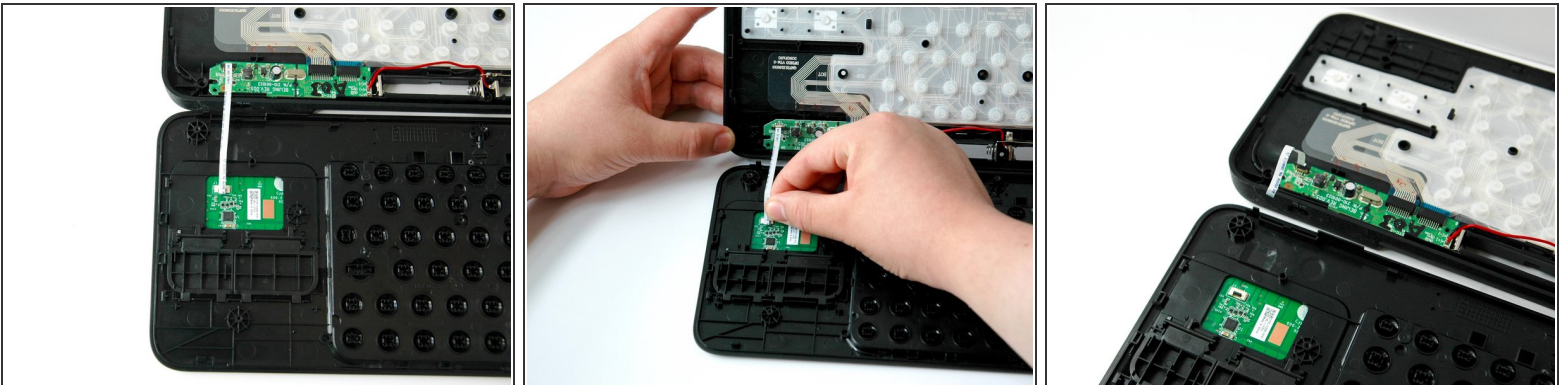


## Step 9



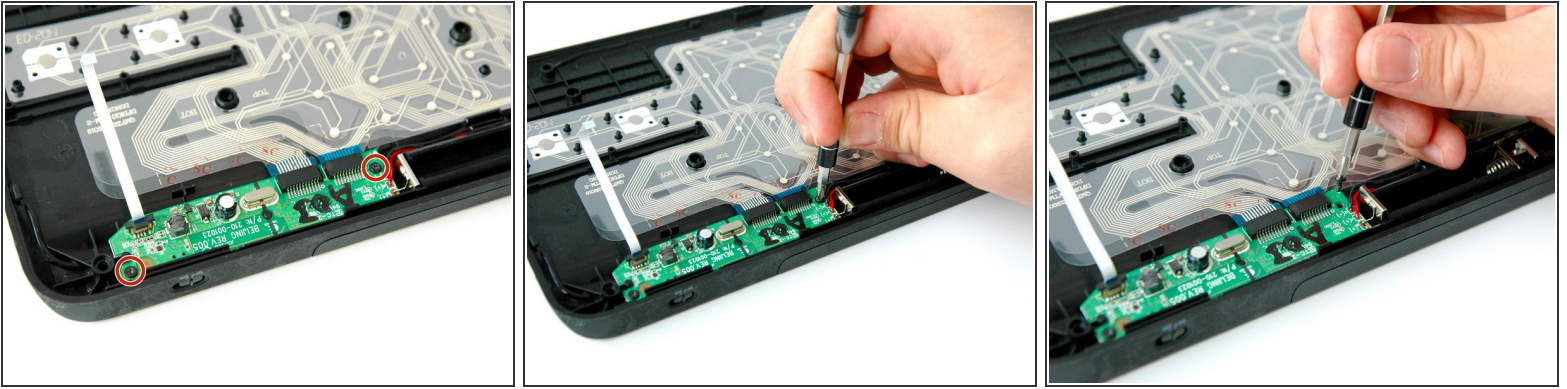
- Separate the back panel from the front panel completely, using both hands.
- i* A white ribbon flex cable will remain connected to both panels.
- ⚠ Pull the panels apart slowly and gently, or the white ribbon flex cable may be unsafely removed.

## Step 10 — On/Off Switch



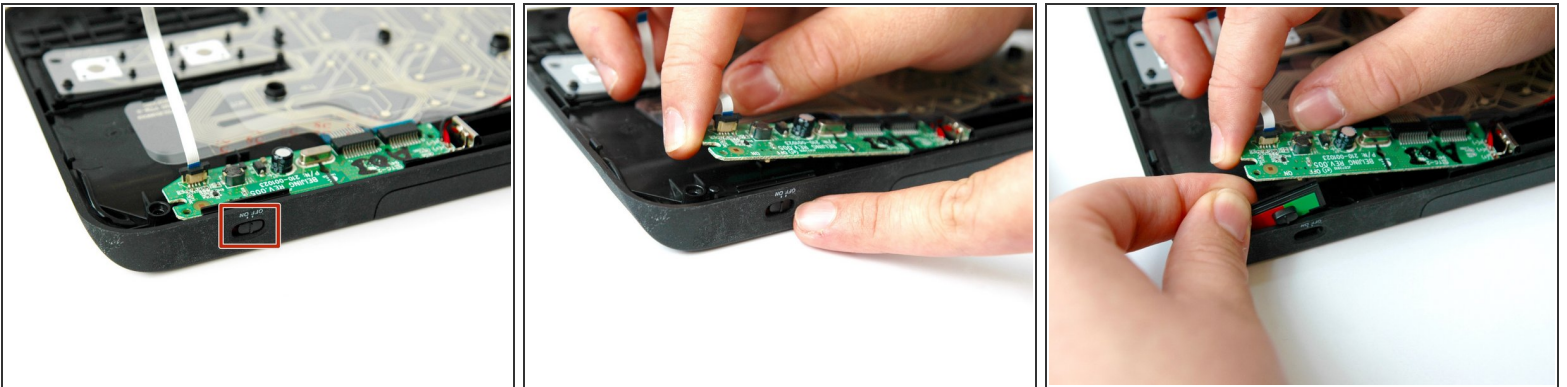
- Grip the lower end of the ribbon flex cable (white band) using your thumb and index finger.
- Then slide the strip out toward yourself in a scooping motion.
- i* Now, you should have two completely separated panel pieces.

## Step 11



- Set aside the front panel and locate the green card atop the on/off switch on the back panel.
- Unscrew the two 4.0 mm screws on either side of the green card using a Phillips #1 screwdriver.

## Step 12



- Lift up and hold the left side of the green card with one index finger.
- Grip and pull the on/off switch out with your other index finger and thumb.

To reassemble your device, follow these instructions in reverse order.