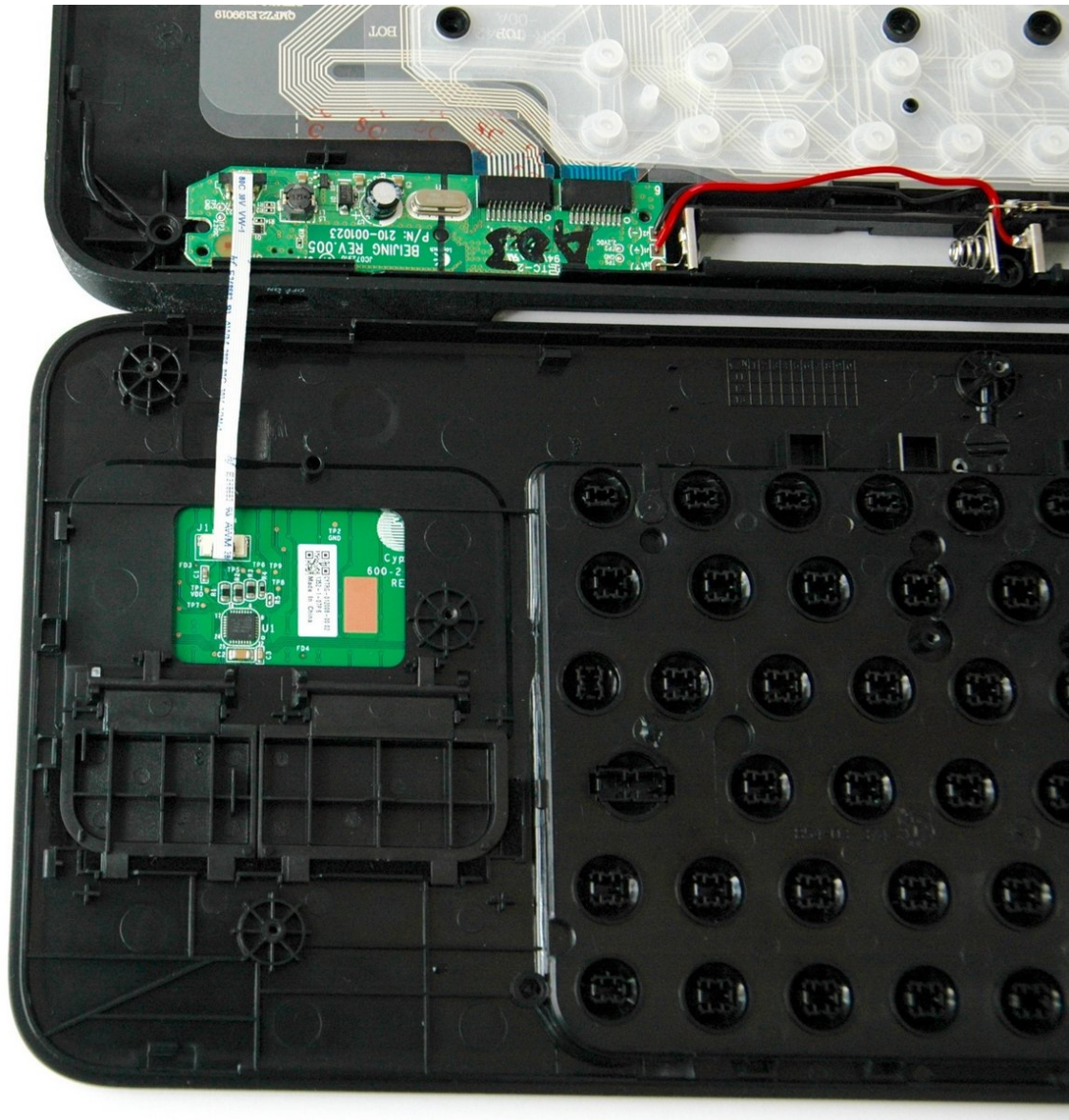




# Logitech Harmony Smart Keyboard Ribbon Flex Cable Replacement

This will instruct you to remove and replace the Ribbon Flex Cable for the Logitech Harmony Smart Keyboard.

Written By: Hayley Nichols



---

## INTRODUCTION

This is a replacement guide for the Logitech Harmony Smart Keyboard's ribbon flex cable.

The ribbon flex cable is thin, flat, multiconductor cable that is widely used for internal peripheral connections in electronic systems. In the Logitech Harmony Smart Keyboard, the ribbon flex cable connects the touchpad printed circuit board (PCB) and the keyboard printed circuit board (PCB).

---

### TOOLS:

- [Spudger](#) (1)
  - [Phillips #1 Screwdriver](#) (1)
-

## Step 1 — Back Panel



- Turn keyboard over to the backside.

## Step 2



- Press and slide up on the upper battery latch, using both thumbs.



### Step 3



- Remove the two AA batteries and set them aside.

### Step 4



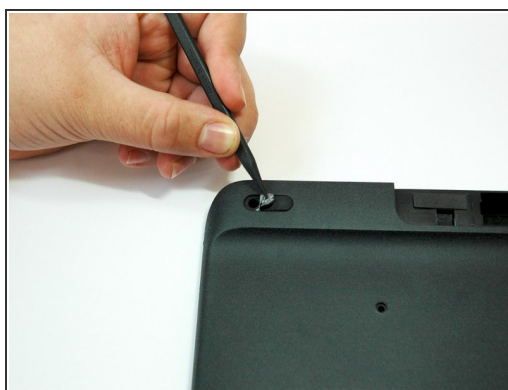
- Unscrew all five 4.0 mm screws, using Phillips #1 screwdriver.

## Step 5



- Peel off the center sticker to reveal two hidden 4.0 mm screws.
- Unscrew these two screws with a Phillips #1 screwdriver.

## Step 6



- Lift both top left and top right rubber stickers halfway, using the sharp end of the plastic spudger.
- Unscrew a total of two 4.0 mm screws, under the rubber stickers, using a Phillips #1 screwdriver.

## Step 7



- Unscrew the top center 4.0 mm screw, in the battery compartment, using the Phillips #1 screwdriver.

**i** Now, you should have a total of ten 4.0 mm screws set aside.

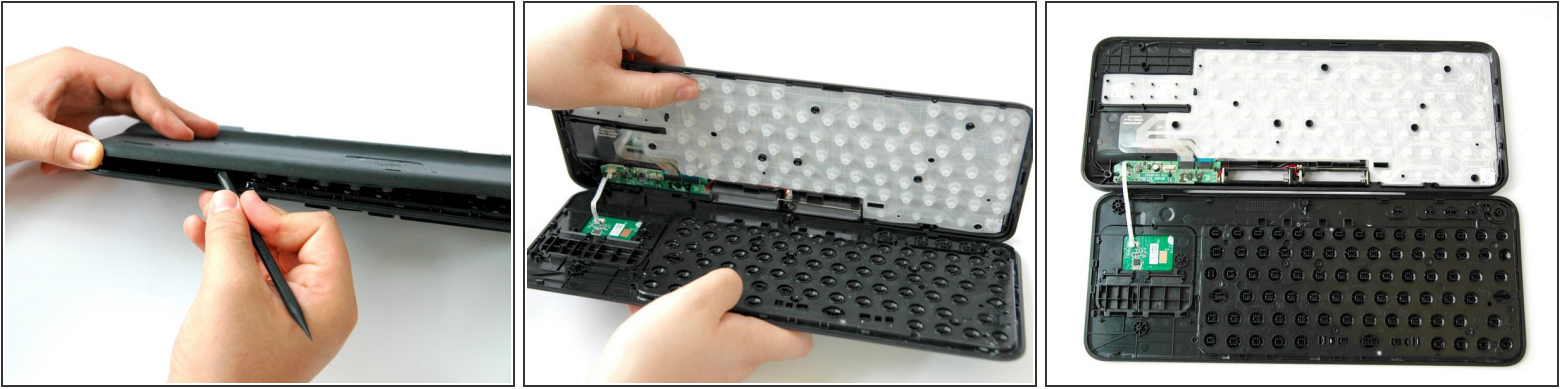
## Step 8



- Wedge the flat end of the spudger between the back panel and front panel.
- Slide the flat end of the spudger from right to left to pry the two panels apart.

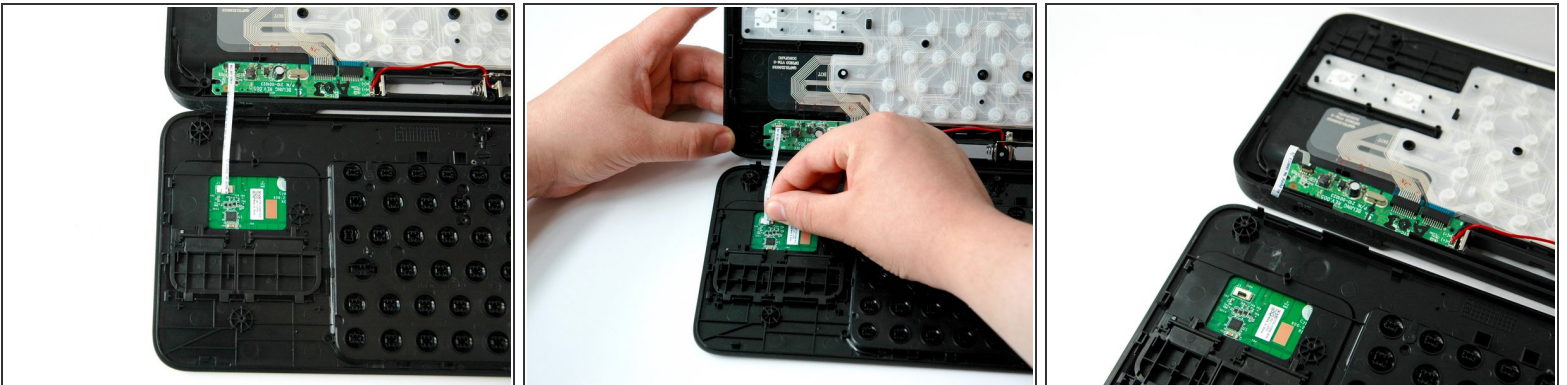


## Step 9



- Separate the back panel from the front panel completely, using both hands.
- i** A white ribbon flex cable will remain connected to both panels.
- ⚠** Pull the panels apart slowly and gently, or the white ribbon flex cable may be unsafely removed.

## Step 10 — Ribbon Flex Cable



- Grip the lower end of the ribbon flex cable (white band) using your thumb and index finger.
- Then slide the strip out toward yourself in a scooping motion.
- i** Now, you should have two completely separated panel pieces.

## Step 11



- Grip the other lower end of the ribbon flex cable using your thumb and index finger.
- Gently slide the cable up and out of the green card.

To reassemble your device, follow these instructions in reverse order.