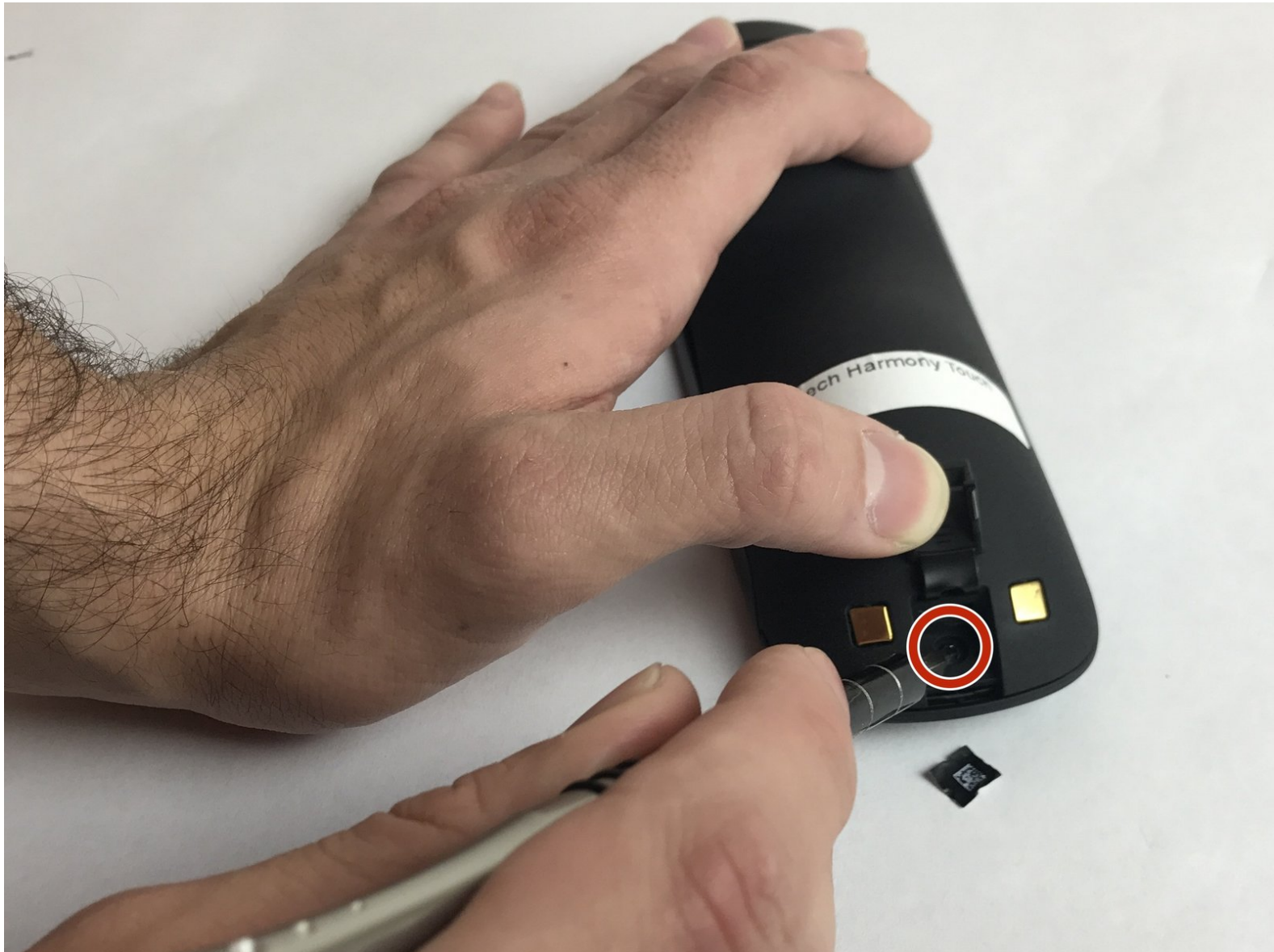




Logitech Harmony Touch Power Adapter Replacement

This guide will aid in the replacing and repairing of the power adapter on your device.

Written By: Jennifer Jimenez





TOOLS:

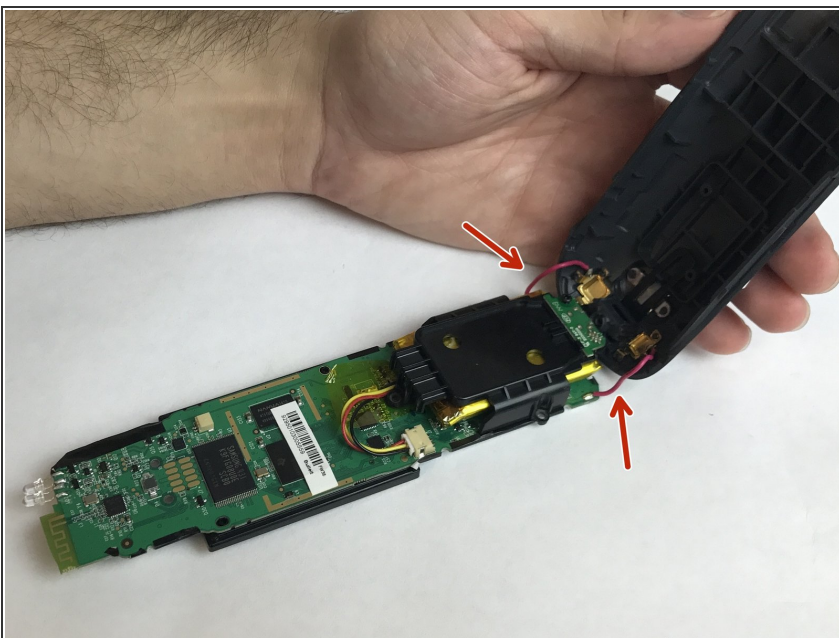
- [Metal Spudger](#) (1)
- [iFixit Opening Tools](#) (1)
- [Phillips #0 Screwdriver](#) (1)

Step 1 — Power Adapter



- Open the latch that secures the charging port
 - Remove the black sticker and remove the screw with the indicated screwdriver
 - Take the plastic opening tool and run it down the side of the remote to pop the case open
- ⚠ While doing this step there are three wires that connect the two pieces, be sure not to rip them out when opening
- Detach the white clamp to partially disconnect the case from the motherboard

Step 2



- Once your device is open, check to see if wires are intact
- If wires are not intact, solder your wires back in place to ensure contact with your charging port

To reassemble your device, follow these instructions in reverse order.