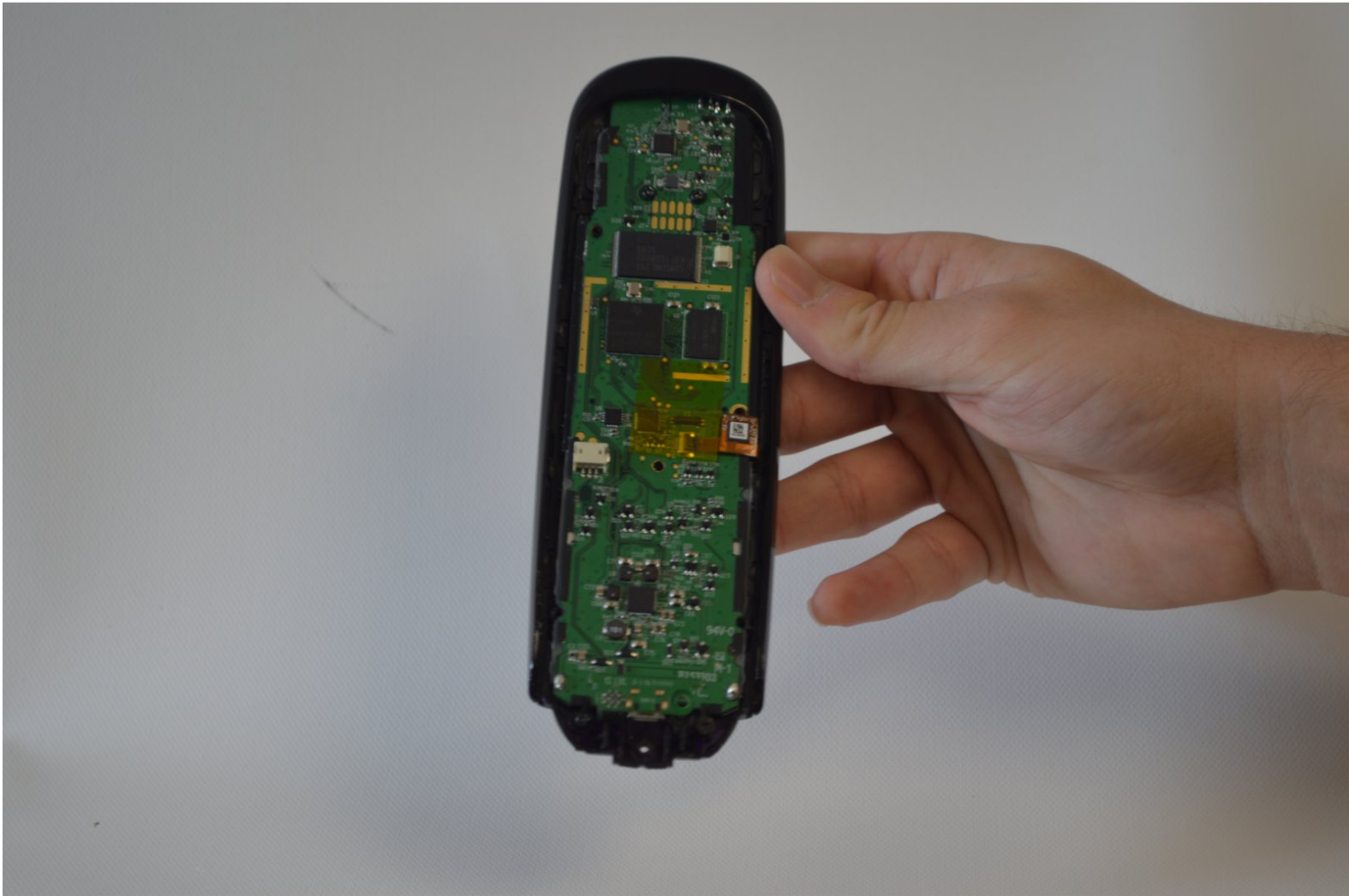




Logitech Harmony Ultimate Motherboard Replacement

Motherboard the source of all your problems? Use this guide to replace that bad motherboard.

Written By: Aaron Diaz



INTRODUCTION

The motherboard controls everything that the remote does. If the remote is powering on but there are complications, then the motherboard is a likely culprit. When removing the motherboard, ensure that you have a Phillips screwdriver to remove 4 screws on the actual motherboard. Also, caution is necessary when removing the flap, as it can be damaged if not properly removed.



TOOLS:

- [Phillips #0 Screwdriver](#) (1)
 - [iFixit Opening Tools](#) (1)
-

Step 1 — Battery



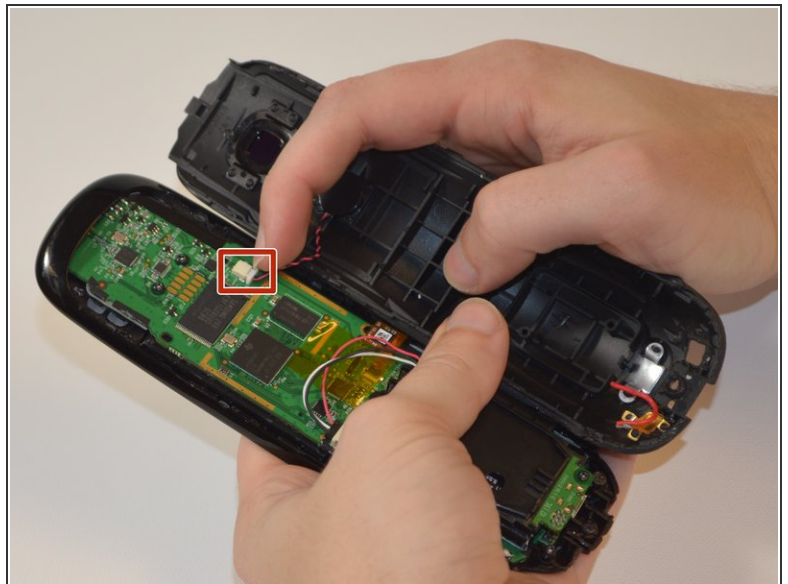
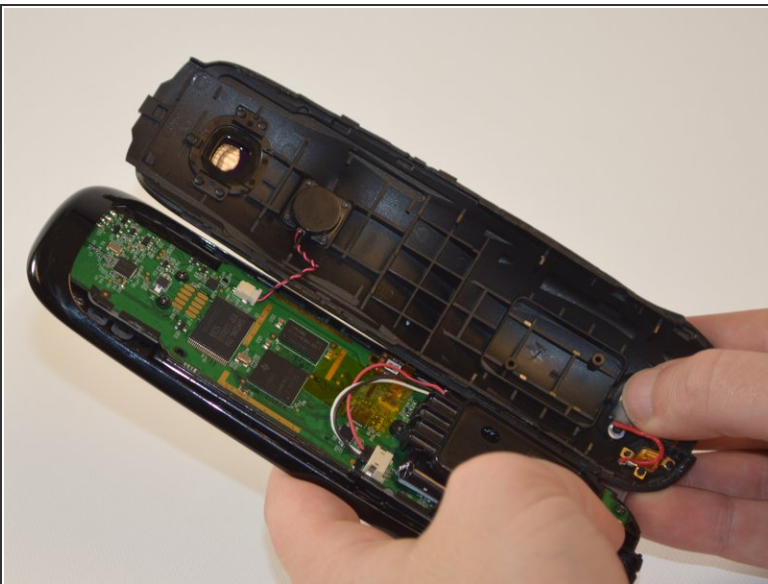
- Remove the single 6 mm Phillips #0 screw located beneath the sticker near the USB charging port.

Step 2



- Use a plastic opening tool to release tabs that hold the front panel and back panel together. There are three tabs on each side of the device that need to separate for the device to open.
- ☑ The use of a plastic opening tool is recommended to avoid damage done the remote. Use stronger objects as a last resort.

Step 3



- Disconnect the wires running from the back cover to the motherboard.

Step 4



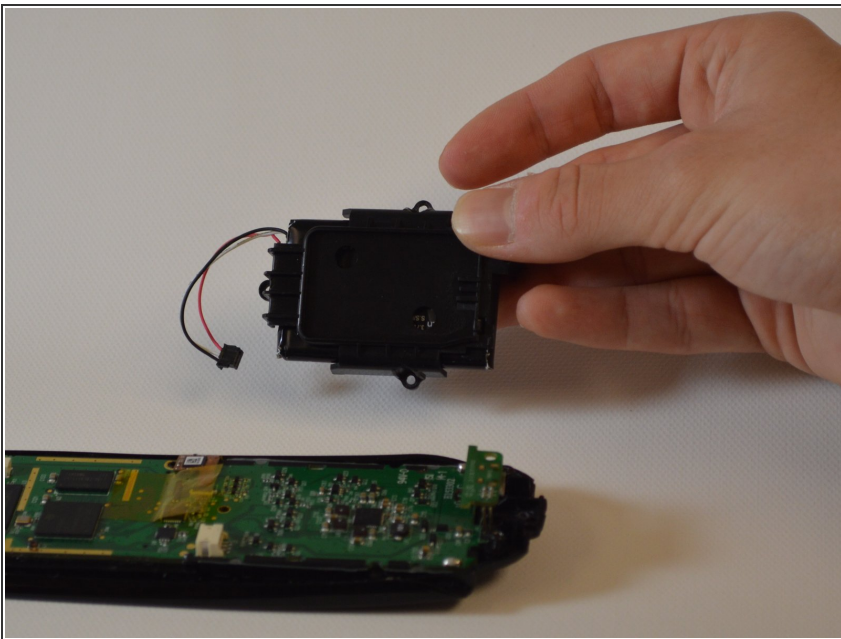
- Remove the four 6mm Phillips #0 screws from the battery case.

Step 5



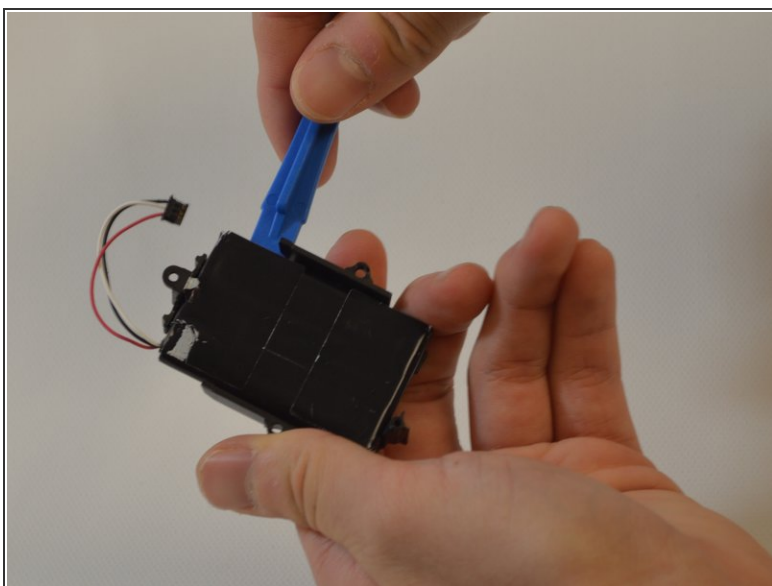
- The battery is still connected to the device via wiring. To free the battery completely, remove the dark plastic piece from the slot with the plastic opening tool.
- ⓘ Removing the dark plastic piece from the motherboard takes some patience, as the remote is designed so that the battery will not dislocate under extreme conditions.

Step 6



- Lift the battery and its case out of the remote.
- ⓘ The battery should still be connected to the case with adhesive.

Step 7



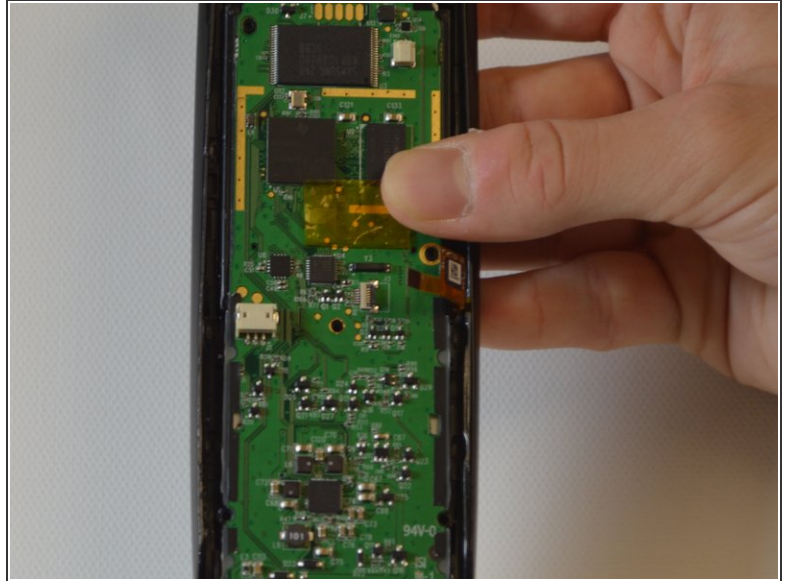
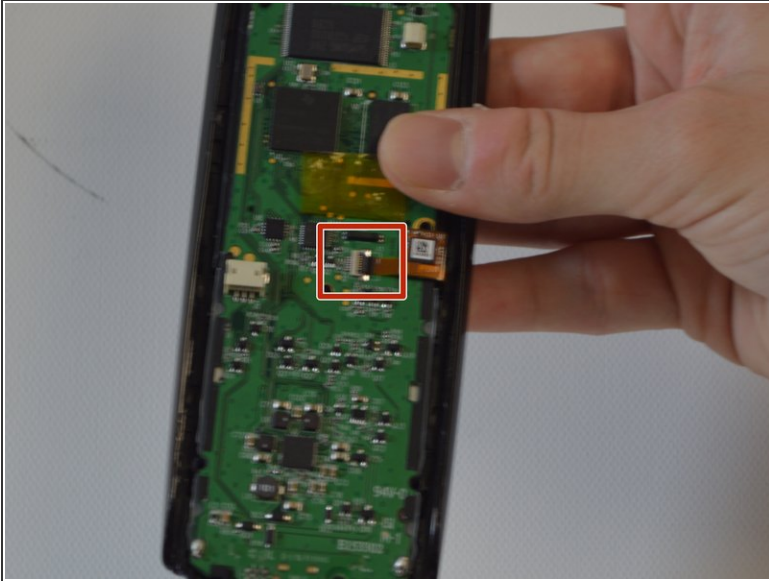
- Use the plastic opening tool to separate the battery from the case.

Step 8 — Motherboard



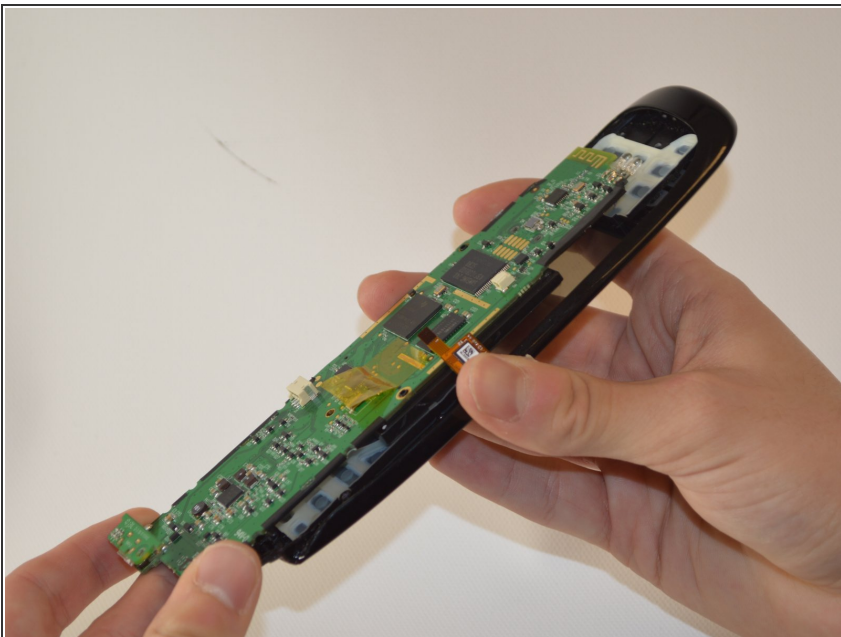
- Remove the four 6mm Phillips #0 screws from the motherboard.

Step 9



- There is a flap that connects to the motherboard from the plastic casing. Use fingernails to safely release the flap by flipping the small black buckle on the motherboard.
- ⓘ The flap and buckle are underneath the clear yellow piece of tape.
- ⚠ Be very careful as damaging this flap could permanently damage your controller.

Step 10



- The motherboard is now safe to remove by sliding and lifting it backwards out of place.

To reassemble your device, follow these instructions in reverse order.